

ALL-TIME RESULTS

Listed below, left to right, is date of game, Delaware's score, the opponent, the opponent's score, Delaware win or loss, the site of game and attendance (where available), and opponent national ranking at date of game where available (NCAA Committee rank - The Sports Network rank).

All games marked with # were televised live or same day-tape delay with station call letters or network in () where available. All games marked with (N) were night games (6 p.m. or later).

Opponent national ranking (NCAA/Sports Network/USA Today) at date of the game are listed where available (i.e., #11[TSN])

Corrections and additions should be reported to Scott Selheimer, UD Sports Information Director.

Special thanks to former Delaware SID Elbert Chance for his constant research of UD records.

Delaware College did not have a campus athletic field until Frazer Field opened in 1913. The designation "home game", therefore, has several different meanings.

Home games in Newark were played at Homewood Driving Park east of town or on the Pie Field, which was located in the area of West Park Place and Indian Field Road near what once was called the Red Men's Grove.

Home games also were played in Wilmington on the athletics grounds at Front and Union Streets, at Riverview Park and at the Harlan and Hollingsworth athletic fields near the present site of Frawley Stadium on the Christina waterfront.

Some of the early opponents were the Delaware Field Club and the Warren Athletic Club of Wilmington, Shortridge Academy of Media, PA, and the Wilmington Conference Academy, which had opened in Dover in 1873. Games played in Baltimore were played on Homewood Field, which must be distinguished from the Homewood Driving Park.

1889

(1-1-1)

Head Coach: Unknown
Captain: Joseph B. Handy

Oct.	26	0	Dela. Field Club of Wilm.74	L	A
Nov.	16	30	Warren Club of Wilm.0	W	H
Dec.	7	0	Conference Club of Dover0	T	H

1890

(3-2)

Head Coach: Unknown
Captain: Edward R. Martin

Oct.	4	0	Swarthmore54	L	A
Oct.	11	0	Swarthmore Sophs30	L	H
Oct.	18	6	Del. Field Club of Wilm.0	W	A
Oct.	23	12	Wilmington Friends School0	W	A
Nov.	20	8	Delaware Sophomores0	W	H

1891

(5-3-1)

Head Coach: Unknown
Captain: Joseph B. Handy

Oct.	3	0	Haverford18	L	A
Oct.	10	58	Wilmington Y.M.C.A.0	W	H
Oct.	17	4	St. John's16	L	H
Oct.	24	0	Shortridge Academy6	L	A
Oct.	27	6	Franklin (Baltimore)6	T	H
Oct.	31	4	Del. Field Club of Wilm.0	W	H
Nov.	6	10	Washington College0	W	H
Nov.	14	30	Warren Club of Wilm.0	W	H
Nov.	21	14	Shortridge Academy12	W	H

1892

(1-2-2)

Head Coach: Unknown
Captain: Brooks L. Ross
Manager: Walter Steele

Oct.	15	0	Haverford40	L	A
Oct.	22	4	Philadelphia Y.M.C.A.6	L	H
Oct.	29	14	Wilmington Y.M.C.A.0	W	A
Nov.	10	6	Washington College6	T	H
Dec.	3	0	Del. Field Club Of Wilm.0	T	*N

* game played at Delaware City, DE

1893

(2-1)

Head Coach: Unknown
Captain: William H. Harrington

Oct.	23	0	Warren Athl. Club of Wilm.2	L	A
Nov.	11	44	Phila. Manual Training Sch.0	W	A
Nov.	18	56	Conference Acad. of Dover0	W	A

1894

(1-1)

Head Coach: Unknown
Asst. Coaches: Maupin, John Armstrong, Joseph Hossinger
Captain: William U. Reybold

Oct.	6	0	Haverford36	L	A
Oct.	27	38	Hahnemann0	W	H

1895

(1-3)

Head Coach: Unknown
Captain: Robert B. Wolf

Oct.	5	0	Swarthmore14	L	
Oct.	12	12	Swarthmore31	L	
Nov.	15	0	Delaware Alumni2	L	H
Nov.	23	10	Villanova6	W	H

IRA. L. PIERCE

HEAD COACH

1896 • 0-6, .000

1896

(0-6)

Head Coach: Ira L. Pierce
Captain: Ernest W. Sipple

Oct.	3	0	Villanova14	L	H
Oct.	17	0	Swarthmore44	L	A
Oct.	24	0	Haverford24	L	H
Oct.	31	0	Conference Academy12	L	H
Nov.	18	0	Penn. Military College14	L	A
Nov.	21	0	Haverford (at Wilmington, DE)6	L	*N

HERBERT L. RICE

HEAD COACH

1897-01 • 17-18-3, .487

1897

(2-4)

Head Coach: Herbert L. Rice
Captain: John T. Mullins
Manager: Waldo C. Wilson

Oct.	2	0	Haverford16	L	H
Oct.	6	6	Swarthmore12	L	A
Oct.	16	4	Ursinus0	W	H
Oct.	23	0	Haverford48	L	A
Nov.	5	14	St. John's12	W	H
Nov.	13	0	Penn. Military College18	L	A

1898

(2-5-2)

Head Coach: Herbert L. Rice
Captain: Harrison W. Vickers

Oct.	1	0	Swarthmore22	L	A
Oct.	8	29	Conference Academy0	W	H
Oct.	14	0	St. John's0	T	H
Oct.	15	0	Penn. Military College6	L	A
Oct.	22	46	Conference Academy0	W	H
Oct.	29	0	Ursinus46	L	A
Nov.	5	0	Swarthmore0	T	A
Nov.	12	0	Haverford18	L	A
Nov.	24	5	Penn. Military College11	L	A

1899

(6-2)

Head Coach: Herbert L. Rice
Captain: Alfred H. Hartman

Sep.	30	5	Wilmington High School0	W	A
Oct.	7	76	Tome Institute0	W	H
Oct.	14	23	Penn. Military College0	W	A
Oct.	18	0	Swarthmore17	L	A
Oct.	21	56	Conference Academy0	W	H
Oct.	28	0	Haverford23	L	H
Nov.	8	34	Maryland Agriculture College0	W	H
Nov.	18	35	Conference Academy0	W	A

1900

(2-3-1)

Head Coach: Herbert L. Rice
Captain: Theodore R. Wolf

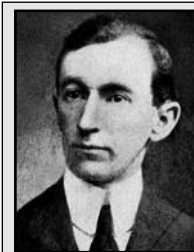
Oct.	6	10	Franklin & Marshall28	L	A
Oct.	13	0	Johns Hopkins5	L	A
Oct.	27	17	Penn. Military College0	W	A
Nov.	7	5	Haverford5	T	A
Nov.	10	0	Ursinus12	L	A
Nov.	29	34	Hahnemann0	W	H

1901

(5-4)

Head Coach: Herbert L. Rice
Captain: John W. Huxley

Sep.	21	5	Williamson0	W	H
Oct.	5	24	Maryland Agriculture College6	W	H
Oct.	12	0	Swarthmore10	L	A
Oct.	19	6	Haverford0	W	H
Oct.	29	2	Franklin & Marshall21	L	H
Nov.	2	6	Rutgers5	W	A
Nov.	9	0	Johns Hopkins28	L	H
Nov.	16	5	St. John's32	L	H
Nov.	29	5	Lebanon Valley0	W	H



CLARENCE A. SHORT

HEAD COACH

1902; 1906

8-6-2, .563

1902

(3-5-1)

Head Coach: Clarence A. Short
Captain: William R.M. Wharton

Oct.	4	0	Swarthmore12	L	A
Oct.	11	27	Washington College0	W	H
Oct.	18	0	Haverford41	L	A
Oct.	25	6	^Maryland (Baltimore)0	W	H
Nov.	1	17	Fordham10	W	A
Nov.	8	0	St. John's11	L	A
Nov.	15	12	Rutgers15	L	H
Nov.	19	12	Penn. Military College17	L	A
Nov.	28	0	Maryland Agriculture College0	T	H

^=Substituted for game with Johns Hopkins, which was cancelled.

ALL-TIME RESULTS

NATHAN H. MANNAKEE

HEAD COACH • 1903-05 • 8-13-2, .392

1903

(4-4)

Head Coach: Nathan H. Mannakee
Captain: Bassett Ferguson

Oct.	3	27	Washington College0	W	H
Oct.	10	5	Rutgers0	W	H
Oct.	14	23	Conference Academy0	W	H
Oct.	17	0	Swarthmore11	L	A
Oct.	24	0	St. John's5	L	H
Nov.	7	6	Western Maryland16	L	H
Nov.	14	0	Haverford37	L	A
Nov.	26	16	Maryland Agriculture0	W	H

1904

(1-5-1)

Head Coach: Nathan H. Mannakee
Captain: Paul F. Pie

Oct.	8	0	Penn. Military College4	L	A
Oct.	15	0	Swarthmore41	L	A
Oct.	22	0	Fordham12	L	A
Oct.	29	0	Seton Hall26	L	A
Nov.	5	6	Rutgers6	T	A
Nov.	11	0	Haverford17	L	A
Nov.	24	18	Maryland Agriculture Coll.0	W	H

1905

(3-4-1)

Head Coach: Nathan A. Mannakee
Captain: Paul F. Pie

Oct.	7	17	Williamson0	W	H
Oct.	14	0	Johns Hopkins11	L	A
Oct.	21	6	Washington College6	T	A
Oct.	28	0	Rutgers10	L	H
Nov.	4	11	Washington College0	W	H
Nov.	8	6	Penn. Military College12	L	A
Nov.	18	0	Fordham4	L	A
Nov.	30	12	Maryland Agriculture College0	W	H

CLARENCE A. SHORT

HEAD COACH • 1902; 1906 • 8-6-2, .563

1906

(5-1)

Head Coach: Clarence A. Short
Captain: Charles P. Messick

Sep.	29	10	Medico-Chirurgical0	W	H
Oct.	13	5	Johns Hopkins0	W	A
Oct.	20	9	Washington College0	W	A
Oct.	27	4	Rutgers0	W	A
Nov.	3	12	Penn. Military College0	W	A
Nov.	10	4	Fordham16	L	A

E. PRATT KING

HEAD COACH • 1907 • 0-5-1, .084

1907

(0-5-1)

Head Coach: E. Pratt King
Captain: J. Frank Baldwin

Oct.	5	0	Williamson5	L	H
Oct.	12	0	Haverford12	L	A
Oct.	17	0	Western Maryland22	L	H
Oct.	26	0	Rutgers39	L	H
Nov.	2	0	Franklin & Marshall28	L	A
Nov.	9	0	Johns Hopkins0	L	A



WILLIAM J. MCAVOY

HEAD COACH
1908-16; 1922-24
42-43-13, .494

1908

(3-4-1)

Head Coach: William J. McAvoy
Captain: Gustav A. Papperman

Oct.	3	0	Williamson6	L	H
Oct.	10	0	Haverford11	L	A
Oct.	17	0	Bucknell13	L	H
Oct.	31	12	Washington College0	W	H
Nov.	7	6	Rutgers6	T	A
Nov.	14	9	Johns Hopkins0	W	A
Nov.	21	15	Franklin & Marshall0	W	H
Nov.	26	4	Western Maryland15	L	A

1909

(1-6-1)

Head Coach: William J. McAvoy
Captain: John R. Rothrock

Oct.	2	0	Williamson0	T	H
Oct.	9	0	Haverford3	L	A
Oct.	23	10	Gettysburg23	L	A
Oct.	30	0	Swarthmore46	L	A
Nov.	6	0	Washington College34	L	A
Nov.	13	6	Western Maryland11	L	H
Nov.	20	0	Franklin & Marshall23	L	A
Nov.	25	6	Lebanon Valley0	W	H

1910

(1-2-2)

Head Coach: William J. McAvoy
Captain: Carl A. Taylor

Oct.	1	0	Williamson0	T	H
Oct.	8	5	Haverford5	T	A
Oct.	15	14	Mt. St. Mary's6	W	A
Oct.	22	0	Swarthmore27	L	A
Oct.	29	0	Muhlenberg11	L	H

1911

(2-5-2)

Head Coach: William J. McAvoy
Captain: Carl A. Taylor

Sep.	23	0	Williamson0	T	H
Sep.	30	0	Swarthmore0	T	A
Oct.	7	24	Lebanon Valley0	W	H
Oct.	14	0	Haverford17	L	A
Oct.	21	24	Washington College0	W	H
Oct.	28	0	Muhlenberg15	L	A
Nov.	8	6	Penn. Military College8	L	A
Nov.	18	0	Gettysburg5	L	A
Nov.	25	0	Dickinson11	L	H

1912

(1-6-1)

Head Coach: William J. McAvoy
Captain: Arthur C. Huston

Sep.	28	0	Lehigh43	L	A
Oct.	5	0	Haverford14	L	A
Oct.	12	0	Lebanon Valley0	T	H
Oct.	19	0	Washington College7	L	A
Oct.	26	0	Muhlenberg21	L	H
Nov.	2	0	Catholic University7	L	H
Nov.	9	0	Gettysburg27	L	A
Nov.	16	50	Maryland (Baltimore)0	W	H

1913

(2-4-2)

Head Coach: William J. McAvoy
Captain: William F. Cann

Oct.	4	0	Haverford7	L	H
Oct.	11	0	Penn. Military College0	T	H
Oct.	18	28	Temple (FF)0	W	H
Oct.	25	0	Catholic University0	T	H
Nov.	1	0	Stevens Institute14	L	A
Nov.	8	0	Washington College13	L	H
Nov.	15	20	Mt. St. Mary's13	W	H
Nov.	22	7	Dickinson35	L	H

(FF) = First game at Frazier Field

1914

(7-1-1)

Head Coach: William J. McAvoy
Captain: Victor H. Handy

Sep.	26	0	Lafayette41	L	A
Oct.	3	27	Baltimore Poly6	W	H
Oct.	10	49	Baltimore City0	W	H
Oct.	17	20	Temple7	W	H
Oct.	24	13	Penn. Military College0	W	A
Oct.	31	0	Stevens Institute0	T	A
Nov.	7	13	Catholic University0	W	H
Nov.	14	17	Western Maryland12	W	H
Nov.	21	33	Carlisle0	W	H

1915

(6-3)

Head Coach: William J. McAvoy
Captain: Victor H. Handy

Oct.	2	7	Penn. Military College6	W	A
Oct.	9	14	Haverford37	L	A
Oct.	16	13	Penn. Military College6	W	H
Oct.	20	0	Lafayette31	L	A
Oct.	23	19	Western Maryland6	W	H
Oct.	30	0	Catholic University40	L	A
Nov.	6	24	Dickinson7	W	H
Nov.	13	13	Mt. St. Mary's6	W	A
Nov.	25	93	William & Mary0	W	H

1916

(4-3-1)

Head Coach: William J. McAvoy
Captain: Michael J. Fidance

Oct.	7	21	Penn. Military College0	W	A
Oct.	14	0	Western Maryland16	L	H
Oct.	21	0	Haverford0	T	H
Oct.	28	5	Stevens College0	W	A
Nov.	4	0	Dickinson22	L	A
Nov.	11	14	St. John's0	W	H
Nov.	18	13	Gallaudet6	W	H
Nov.	30	7	Mt. St. Mary's22	L	H

STAN BAUMGARTNER

HEAD COACH • 1917 • 2-5, .286

1917

(2-5)

Head Coach: Stan Baumgartner
Captain: Ernest S. Wilson

Oct.	6	0	Maryland Agriculture Coll.20	L	A
Oct.	13	7	Haverford0	W	A
Oct.	20	0	Western Maryland10	L	H
Oct.	27	0	Dickinson9	L	H
Nov.	3	13	Gallaudet7	W	H
Nov.	10	0	Stevens College27	L	H
Nov.	17	0	Swarthmore27	L	H

ALL-TIME RESULTS

LT. MILTON ARONOWITZ

HEAD COACH • 1918 • 1-2-2, .400

1918

(1-2-2)

Head Coach: Lt. Milton Aronowitz
Captain: Harry W. Loose

Oct.	?	13	U.S. Radio Training School0	W	H
Nov.	2	0	Penn. Military College0	T	H
Nov.	9	6	Battleship Minnesota6	T	H
Nov.	16	0	Swarthmore29	L	A
Nov.	23	0	Ursinus9	L	H



HOWARD B. SHIPLEY

HEAD COACH
1919-20

5-10-2, .353

1919

(2-5-1)

Head Coach: Howard B. Shipley
Captain: Robert Stewart

Oct.	4	0	Franklin & Marshall0	T	H
Oct.	11	0	Pennsylvania89	L	A
Oct.	18	0	Dickinson20	L	A
Oct.	25	14	Haverford0	W	A
Nov.	1	7	Georgetown47	L	A
Nov.	8	0	Swarthmore17	L	H
Nov.	15	21	Lebanon Valley7	W	H
Nov.	22	0	Penn. Military College17	L	A

1920

(3-5-1)

Head Coach: Howard B. Shipley
Captain: Hugh McCaughan

Sep.	24	0	Pennsylvania35	L	A
Oct.	1	14	Ursinus0	W	H
Oct.	9	14	George Washington7	W	A
Oct.	16	20	St. John's0	W	H
Oct.	23	0	Haverford14	L	H
Nov.	6	0	Stevens College48	L	A
Nov.	13	0	Swarthmore63	L	A
Nov.	20	7	Dickinson35	L	H
Nov.	25	0	Penn. Military College0	T	A

SYLVESTER R. DERBY

HEAD COACH • 1921 • 5-4, .556

1921

(5-4)

Head Coach: Sylvester R. Derby
Captain: Ernest S. Wilson

Sep.	24	0	Pennsylvania89	L	A
Oct.	1	0	Muhlenberg21	L	H
Oct.	8	0	Johns Hopkins27	L	A
Oct.	15	49	New York Aggies0	W	H
Oct.	22	13	Haverford0	W	A
Oct.	29	47	Washington College0	W	H
Nov.	5	48	Western Maryland6	W	H
Nov.	12	0	Lafayette44	L	A
Nov.	19	6	PMC (+)0	W	N

(+) Played at Harlan Field, Wilmington, Del.

WILLIAM J. MCAVOY

HEAD COACH • 1908-16; 1922-24 • 42-43-13, .494

1922

(6-3)

Head Coach: William J. McAvoy
Captain: John D. Williams

Sep.	30	7	St. Joseph's6	W	H
Oct.	7	0	Muhlenberg12	L	A
Oct.	14	12	Ursinus0	W	H
Oct.	21	0	Rhode Island State7	L	A
Oct.	28	2	Penn. Military College6	L	A
Nov.	4	7	Stevens College0	W	A
Nov.	11	28	Haverford7	W	H
Nov.	18	7	Washington College3	W	H
Nov.	25	21	Dickinson (+)0	W	N

(+) Played at Harlan Field, Wilmington, Del.

1923

(5-3-1)

Head Coach: William J. McAvoy
Captain: James H. Donalson

Sep.	29	0	St. Joseph's4	L	H
Oct.	6	6	Muhlenberg0	W	H
Oct.	13	14	Ursinus7	W	H
Oct.	20	18	C.C.N.Y.0	W	A
Oct.	27	0	St. John's0	T	H
Nov.	3	19	Haverford6	W	A
Nov.	10	0	William & Mary14	L	A
Nov.	17	19	George Washington7	W	H
Nov.	27	0	Dickinson7	L	N

*Played at Franklin Field, Philadelphia, Pa.

1924

(4-3-1)

Head Coach: William J. McAvoy
Captain: William D. McKelvie

Oct.	4	6	St. Joseph's0	W	H
Oct.	11	0	Ursinus0	T	A
Oct.	18	3	Villanova17	L	A
Oct.	25	0	St. John's6	L	H
Nov.	1	21	Stevens College0	W	H
Nov.	8	8	Haverford7	W	H
Nov.	15	6	George Washington0	W	H
Nov.	22	0	Dickinson15	L	A



R.M. FRANK FORSTBURG

HEAD COACH
1925-26

7-9-0, .437

1925

(4-4)

Head Coach: Frank Forstburg
Captain: Lewis "Huck" Kramer

Oct.	3	14	St. Joseph's6	W	H
Oct.	9	6	Ursinus2	W	H
Oct.	17	0	Swarthmore2	L	H
Oct.	24	6	St. John's7	L	H
Oct.	31	24	Upsala7	W	H
Nov.	7	13	Juniaata6	W	H
Nov.	14	0	Haverford18	L	H
Nov.	26	0	Dickinson23	L	A

1926

(3-5)

Head Coach: Frank Forstburg
Captain: William G. Lohmann

Oct.	2	6	Drexel7	L	H
Oct.	9	6	Ursinus0	W	A
Oct.	16	3	Springfield0	W	A
Oct.	23	3	St. John's13	L	A
Oct.	30	0	Rutgers21	L	A
Nov.	6	7	Swarthmore47	L	A
Nov.	13	10	Gallaudet7	W	H
Nov.	20	6	Haverford27	L	H

JOSEPH J. ROTHROCK

HEAD COACH • 1927-28 • 4-11-1, .281

1927

(2-5-1)

Head Coach: Joseph J. Rothrock
Captain: William Reybold Jr.

Oct.	1	6	St. Joseph's0	W	H
Oct.	8	0	Ursinus7	L	H
Oct.	15	0	Hampden-Sydney20	L	A
Oct.	22	0	St. John's0	T	H
Oct.	29	0	Johns Hopkins36	L	A
Nov.	5	0	Swarthmore7	L	H
Nov.	12	12	Gallaudet7	W	A
Nov.	19	0	Haverford27	L	A

1928

(2-6)

Head Coach: Joseph J. Rothrock
Captain: Max Glasser

Oct.	6	0	Drexel19	L	H
Oct.	13	0	Mt. St. Mary's31	L	H
Oct.	20	0	Ursinus7	L	A
Oct.	27	0	Rutgers34	L	A
Nov.	3	0	Swarthmore20	L	A
Nov.	10	25	Gallaudet0	W	H
Nov.	17	0	St. Joseph's26	L	H
Nov.	24	19	Haverford7	W	H



A.B. "GUS" ZIEGLER

HEAD COACH
1929-30

6-10-2, .389

1929

(0-7-1)

Head Coach: A.B. "Gus" Ziegler
Captain: Irwin S. Taylor

Oct.	5	0	Rutgers19	L	A
Oct.	12	0	Ursinus0	T	H
Oct.	19	0	Susquehanna6	L	H
Oct.	26	0	Mt. St. Mary's39	L	A
Nov.	2	6	Swarthmore19	L	H
Nov.	9	6	Drexel21	L	H
Nov.	16	6	Penn. Military College18	L	A
Nov.	27	6	Haverford20	L	A

1930

(6-3-1)

Head Coach: Gus Ziegler
Captain: Samuel M. Sloan

Oct.	4	13	St. Joseph's6	W	A
Oct.	11	6	George Washington9	L	H
Oct.	18	38	Gallaudet0	W	A

ALL-TIME RESULTS

Oct.	25	0	Rutgers40	L	A
Nov.	1	13	Swarthmore12	W	A
Nov.	8	13	Mt. St. Mary's6	W	H
Nov.	15	13	Drexel13	T	A
Nov.	22	14	Haverford7	W	H
Nov.	27	2	Penn. Military College10	L	A
Nov.	29	26	Fort duPont14	W	H



CHARLES ROGERS

HEAD COACH
1931-33

12-9-4, .560

1931

(5-1-2)

Head Coach: Charles Rogers
Captain: Francis Haggerty

Oct.	3	27	Susquehanna0	W	H
Oct.	10	0	St. Joseph's0	T	H
Oct.	17	7	Navy12	L	A
Oct.	24	7	Richmond0	W	H
Oct.	31	6	Rutgers6	T	A
Nov.	7	26	Swarthmore0	W	H
Nov.	14	13	Penn. Military College7	W	H
Nov.	21	31	Haverford0	W	A

Class B Eastern Co-Champions

1932

(5-4)

Head Coach: Charles Rogers
Captain: Francis Haggerty

Oct.	1	11	LaSalle6	W	H
Oct.	8	10	Drexel13	L	H
Oct.	15	0	Rutgers32	L	A
Oct.	22	6	Springfield13	L	H
Oct.	29	0	Wake Forest7	L	H
Nov.	5	7	St. Joseph's0	W	H
Nov.	11	7	Pennsylvania Military Coll. (AC)6	W	N
Nov.	19	6	Haverford0	W	H
Nov.	26	8	Washington College0	W	A

(AC) at Convention Hall, Atlantic City, N.J.

1933

(2-4-2)

Head Coach: Charles Rogers
Captain: John C. Branner

Oct.	7	26	University of Baltimore0	W	H
Oct.	14	0	Army52	L	A
Oct.	21	8	Washington College0	W	A
Oct.	28	6	Lebanon Valley13	L	H
Nov.	4	0	Drexel6	L	A
Nov.	11	0	Pennsylvania Military Coll. (AC)25	L	N
Nov.	18	0	St. Joseph's0	T	H
Nov.	25	6	Juniata6	T	H

(AC) at Convention Hall, Atlantic City, N.J.

J. NEIL STAHLEY

HEAD COACH • 1934 • 4-3-1, .563

1934

(4-3-1)

Head Coach: J. Neil Stahley
Captain: Edwin Thompson

Oct.	6	16	St. Joseph's0	W	A
Oct.	13	14	Juniata0	W	A

Oct.	20	0	Hampden-Sydney0	T	H
Oct.	27	0	Lebanon Valley24	L	H
Nov.	3	7	Dickinson0	W	H
Nov.	10	0	Pennsylvania Military Coll. (AC)12	L	*N
Nov.	17	7	Drexel6	W	H
Nov.	24	7	Washington College29	L	H

(AC) at Convention Hall, Atlantic City, N.J.



LYAL W. CLARK

Head Coach
1935-37

5-18-1, .230

1935

(2-5-1)

Head Coach: Lyal W. Clark
Captain: John S. Glover

Oct.	5	10	Dickinson7	W	A
Oct.	12	0	Mt. St. Mary's0	T	H
Oct.	19	0	Randolph-Macon26	L	H
Oct.	26	33	Washington College6	W	H
Nov.	2	13	St. Joseph's19	L	H
Nov.	9	6	Pennsylvania Military Coll. (at Convention Hall, Atlantic City, NJ)7	L	*N
Nov.	16	7	Drexel34	L	A
Nov.	23	0	Lebanon Valley18	L	H

1936

(2-6)

Head Coach: Lyal W. Clark
Captain: John A. Hodgson

Oct.	3	0	Georgetown39	L	A
Oct.	10	0	Mt. St. Mary's14	L	A
Oct.	17	8	St. Joseph's25	L	H
Oct.	24	19	Randolph-Macon6	W	H
Oct.	31	6	St. John's13	L	A
Nov.	7	6	Pennsylvania Military Coll. (AC)0	W	N
Nov.	14	6	Drexel7	L	H
Nov.	21	6	Washington College21	L	A

(AC) at Convention Hall, Atlantic City, N.J.

1937

(1-7)

Head Coach: Lyal W. Clark
Captain: Richard W. Roberts

Oct.	2	6	Ursinus11	L	A
Oct.	9	0	Rutgers27	L	A
Oct.	16	7	Lebanon Valley23	L	H
Oct.	23	0	Dickinson18	L	H
Oct.	30	32	St. John's7	W	H
Nov.	6	0	Pennsylvania Military Coll. (AC)3	L	N
Nov.	13	6	Drexel8	L	A
Nov.	20	13	Washington College16	L	H

(AC) at Convention Hall, Atlantic City, N.J.

STEPHEN J. GRENDA

HEAD COACH • 1938-39 • 4-12, .250

1938

(3-5)

Head Coach: Stephen J. Grenda
Captains: Ernest George, Thomas J. Ryan

Oct.	1	12	Ursinus9	W	H
Oct.	8	0	Randolph-Macon27	L	H
Oct.	15	0	Dickinson26	L	A

Oct.	22	0	Lehigh32	L	H
Oct.	29	41	St. John's0	W	H
Nov.	5	2	Pennsylvania Military Coll. (AC)32	L	N
Nov.	12	13	Drexel38	L	H
Nov.	19	2	Washington College0	W	A

(AC) at Convention Hall, Atlantic City, N.J.

1939

(1-7)

Head Coach: Stephen J. Grenda
Captain: Howard N. Viden

Oct.	7	0	Ursinus3	L	A
Oct.	14	7	Dickinson13	L	H
Oct.	21	6	Lebanon Valley7	L	H
Oct.	28	6	Hampden-Sydney26	L	H
Nov.	4	0	Randolph-Macon26	L	A
Nov.	11	0	Penn. Military College20	L	N
Nov.	18	7	Lehigh39	L	A
Nov.	25	21	Washington College0	W	H

(AC) at Convention Hall, Atlantic City, N.J.



WILLIAM D. "BILL" MURRAY

HEAD COACH
1940-50

49-16-2, .747

1940

(5-3)

Head Coach: William D. Murray
Captains: Wilmer V. Apsley, William D. Wendle

Oct.	5	0	Hampden-Sydney7	L	A
Oct.	12	0	Dickinson6	L	A
Oct.	19	0	Ursinus (FF)25	L	H
Oct.	26	19	Drexel (FF)0	W	H
Nov.	2	25	Johns Hopkins (FF)0	W	H
Nov.	9	14	Penn. Military College (W)7	W	H
Nov.	16	13	Washington College9	W	A
Nov.	21	16	Lebanon Valley (W)0	W	H

(FF) game played at Frazer Field (Newark, Del.)

(W) game played at Wilmington Ball Park (Wilmington, Del.)

1941

(7-0-1)

Head Coach: William D. Murray
Captain: Melvin "Ripper" Brooks; James F. Mullen

Sep.	27	7	West Chester (FF)7	T	H
Oct.	4	20	Penn. Military College (W) (H)0	W	H
Oct.	11	24	Ursinus0	W	A
Oct.	18	28	Dickinson (FF)0	W	H
Nov.	1	25	Mt. St. Mary's (W)0	W	H
Nov.	8	47	Swarthmore7	W	A
Nov.	15	7	Drexel6	W	A
Nov.	22	18	Washington College (W)6	W	H

(FF) game played at Frazer Field (Newark, Del.)

(W) game played at Wilmington Ball Park (Wilmington, Del.)

1942

(8-0)

Head Coach: William D. Murray
Captains: Hugh M. Bogovich, Albert A. Newcomb, Walter P. Paul

Sep.	25	20	West Chester (W) (H)0	W	H
Oct.	3	40	Drexel (W)0	W	A
Oct.	9	20	Lakehurst Naval Air Stat. (W) (H)7	W	H
Oct.	17	13	Gettysburg (W)0	W	H
Oct.	24	20	Dickinson0	W	A
Oct.	31	19	Penn. Military College (W)14	W	H
Nov.	7	19	Swarthmore (FF)7	W	H

ALL-TIME RESULTS

Nov. 14 45 Western Maryland (W)0 W H

(FF) game played at Frazier Field (Newark, Del.)
(W) game played at Wilmington Ball Park (Wilmington, Del.)

1943 - 1945 No formal teams due to World War II

1946 (10-0)

Head Coach: William D. Murray
Captain: Anthony E. Stalloni

Sep.	28	25	Penn. Military College (W) (H)	0	W	H
Oct.	5	53	Randolph-Macon (W)	0	W	H
Oct.	11	44	Western Maryland (W) (H)	6	W	H
Oct.	19	27	Gettysburg	6	W	A
Oct.	26	52	Drexel (FF) *	0	W	H
Nov.	2	28	Franklin & Marshall	0	W	A
Nov.	9	27	Bucknell	14	W	A
Nov.	16	61	Washington College (W)	0	W	H
Nov.	23	20	Muhlenberg (W)	12	W	H
Jan.	1	21	Rollins	7	W	N

(Cigar Bowl - Tampa, FL)

% Game at Frazier Field (Newark, Del.)
^ Game at Wilmington Ball Park (Wilmington, Del.)
* Last varsity game at Frazier Field

Associated Press Small College National Champions

1947 (4-4)

Head Coach: William D. Murray
Captain: Walter A. Marusa, John W. Messick

Sep.	27	25	Penn. Military College (H)	13	W	H
Oct.	3	19	Maryland	43	L	A
Oct.	11	12	Bucknell	13	L	A
Oct.	25	26	Gettysburg	0	W	H
Nov.	1	26	Franklin & Marshall	6	W	H
Nov.	8	26	Western Maryland	0	W	H
Nov.	15	14	Muhlenberg	20	L	A
Nov.	22	13	Washington & Lee	18	L	H

^home games played at Wilmington Ball Park (Wilmington, Del.)

1948 (5-3)

Head Coach: William D. Murray
Captain: Robert Campbell, Eugene Carrell

Sep.	25	7	Penn. Military College^ (H)	13	L	H
Oct.	2	0	Maryland^ (H)	21	L	H
Oct.	9	19	West Chester (H)	0	W	H
Oct.	15	7	Bucknell^ (H)	0	W	H
Oct.	30	13	Muhlenberg^	0	W	H
Nov.	6	33	Gettysburg	27	W	A
Nov.	13	14	Rollins (FL) (H)	13	W	A
Nov.	20	14	Washington & Lee^	21	L	H

^ game played at Wilmington Ball Park (Wilmington, Del.)

1949 (8-1)

Head Coach: William D. Murray
Captain: John Miller, Mariano Stalloni

Sep.	24	29	Penn. Military College^ (H)	0	W	H
Oct.	1	21	Richmond^ (H)	7	W	H
Oct.	8	7	Bucknell	13	L	A
Oct.	15	26	Rollins^ (H)	6	W	H
Oct.	22	7	Lafayette	0	W	A
Oct.	29	25	Muhlenberg	13	W	A
Nov.	5	47	Bradley	7	W	A
Nov.	12	13	Washington & Lee	7	W	A
Nov.	19	27	West Chester^	14	W	H

^ game played at Wilmington Ball Park (Wilmington, Del.)

1950 (2-5-1)

Head Coach: William D. Murray
Captain: Fred Schenck, James Thomas

Sep.	23	0	Lehigh	21	L	A
Sep.	30	16	West Chester^ (H)	13	W	H
Oct.	7	32	Penn. Military College^ (H)	20	W	H
Oct.	21	7	Lafayette^ (H)	9	L	H
Oct.	28	0	Muhlenberg (H)	0	T	A
Nov.	4	0	Temple	39	L	A
Nov.	11	0	Washington & Lee^	32	L	H
Nov.	18	0	Bucknell^	13	L	H

^ game played at Wilmington Ball Park (Wilmington, Del.)



DAVID M. NELSON

HEAD COACH
1951-55

84-42-2, .664

1951 (5-3)

Head Coach: David M. Nelson
Captain: John DeGasperis

Sep.	22	7	Lehigh^ (H)	0	W	H
Sep.	29	14	Connecticut	27	L	A
Oct.	6	47	West Chester^ (H)	20	W	H
Oct.	13	46	Penn. Military College^ (H)	2	W	H
Oct.	20	7	Temple^ (H)	13	L	H
Oct.	27	21	Muhlenberg^ (H)	7	W	H
Nov.	10	25	Lafayette	7	W	A
Nov.	17	6	Bucknell	33	L	A

^ home games played at Wilmington Ball Park (Wilmington, Del.)

1952 (4-4)

Head Coach: David M. Nelson
Captain: Paul Mueller

Sep.	27	13	Gettysburg^ (H)	14	L	H
Oct.	4	7	Lehigh	6	W	A
Oct.	11	20	West Chester^ (H)	24	L	H
Oct.	25	13	Connecticut^	25	L	H
Nov.	1	12	Muhlenberg (H)	21	L	A
Nov.	8	43	Penn. Military College^*	20	W	H
Nov.	15	13	Lafayette S	12	W	H
Nov.	22	13	Bucknell	0	W	H

^ game played at Wilmington Ball Park (Wilmington, Del.)

* Last game at Wilmington Ball Park (Wilmington, Del.)

S First game at Delaware Stadium

1953 (7-1)

Head Coach: David M. Nelson
Captain: Johnny Borresen

Sep.	26	19	Gettysburg	7	W	H
Oct.	3	26	Lehigh	13	W	H
Oct.	10	13	West Chester	27	L	H
Oct.	17	48	New Hampshire	0	W	H
Oct.	24	30	Connecticut	7	W	A
Oct.	31	18	Muhlenberg	6	W	H
Nov.	14	13	Lafayette	7	W	A
Nov.	21	34	Bucknell	13	W	A

1954 (8-2)

Head Coach: David M. Nelson
Captain: Dan Ford

Sep.	25	40	West Chester	6	W	H
Oct.	2	21	Lehigh	0	W	A
Oct.	9	51	Temple	13	W	H
Oct.	16	19	New Hampshire	13	W	A
Oct.	23	28	Connecticut	7	W	H
Oct.	30	13	Muhlenberg	14	L	A
Nov.	6	13	Gettysburg	14	L	A
Nov.	13	41	Lafayette	7	W	H
Nov.	20	20	Bucknell	0	W	H
Dec.	5	19	Kent State	7	W	N

(Refrigerator Bowl - Evansville, IN)

1955 (8-1)

Head Coach: David M. Nelson
Captain: Vincent Grande

Sep.	24	46	Bainbridge	6	W	H
Oct.	1	13	Lehigh	19	L	H
Oct.	8	14	Lafayette	6	W	A
Oct.	15	20	New Hampshire	18	W	H
Oct.	22	26	Connecticut	14	W	H
Oct.	29	33	Rutgers	7	W	A
Nov.	5	36	Gettysburg	0	W	H
Nov.	12	46	Temple	0	W	A
Nov.	19	27	Bucknell	12	W	A

1956 (5-3-1)

Head Coach: David M. Nelson
Captain: Tom Thomas

Sep.	22	7	West Chester	10	L	H
Sep.	29	33	Lehigh	7	W	A
Oct.	6	14	Lafayette	28	L	H
Oct.	13	26	Bucknell	17	W	H
Oct.	20	14	New Hampshire	6	W	A
Oct.	27	14	Connecticut	26	L	A
Nov.	3	7	Bainbridge	7	T	H
Nov.	10	22	Rutgers	0	W	H
Nov.	17	14	Temple	7	W	H

1957 (4-3)

Head Coach: David M. Nelson
Captain: Joe Harvanik

Sep.	28	14	Lehigh	19	L	H
Oct.	5	0	Bowling Green	7	L	H
Oct.	19	59	New Hampshire	6	W	H
Oct.	26	9	Connecticut	13	L	A
Nov.	2	23	Rutgers	19	W	A
Nov.	9	71	Temple	7	W	H
Nov.	16	34	Bucknell	13	W	A

1958

(5-3, 2-3 *Middle Atlantic Conference, 5th place)

Head Coach: David M. Nelson
Captain: Robert Jones

Sep.	27	7	*Lehigh	8	L	A
Oct.	4	35	*Temple	14	W	A
Oct.	11	6	*Lafayette	7	L	H
Oct.	18	36	New Hampshire	14	W	A
Oct.	25	28	Connecticut	0	W	H
Nov.	1	20	*Rutgers	37	L	H
Nov.	8	28	Massachusetts	14	W	H
Nov.	15	28	*Bucknell	8	W	H

1959

(8-1, 5-0 *Middle Atlantic Conference, 1st)

Head Coach: David M. Nelson
Captain: Mark Hurm

Sep.	26	12	*Lehigh	7	W	H
Oct.	3	42	Massachusetts	12	W	A
Oct.	10	26	*Lafayette	8	W	A
Oct.	17	50	New Hampshire	12	W	H
Oct.	24	30	Marshall	6	W	H

ALL-TIME RESULTS

Oct.	31	34	*Rutgers14	W	A
Nov.	7	62	*Temple0	W	H
Nov.	14	8	Bowling Green30	L	A
Nov.	21	22	*Bucknell6	W	A

Middle Atlantic Conference Champions Lambert Cup Eastern Champions

1960

(2-6-1, 1-4 *Middle Atlantic Conference, 6th)

Head Coach: David M. Nelson

Captain: Micky Heinecken

Sep.	24	14	*Lehigh27	L	A
Oct.	1	12	Amherst14	L	H
Oct.	8	0	*Lafayette3	L	H
Oct.	15	14	New Hampshire31	L	A
Oct.	22	6	Marshall6	T	A
Oct.	29	20	Hofstra0	W	H
Nov.	5	26	*Temple12	W	A
Nov.	12	0	*Rutgers22	L	H
Nov.	19	0	*Bucknell26	L	H

1961

(4-4, 3-2 *Middle Atlantic Conference, 3rd)

Head Coach: David M. Nelson

Captains: William Grossman, John Scholato (acting)

Sep.	23	14	*Lehigh6	W	H
Sep.	30	36	Buffalo12	W	H
Oct.	7	34	*Lafayette0	W	A
Oct.	14	0	Hofstra14	L	A
Oct.	28	16	Ohio University17	L	H
Nov.	4	28	*Temple0	W	H
Nov.	11	19	*Rutgers27	L	A
Nov.	18	14	*Bucknell22	L	A

1962

(7-2, 5-0 *Middle Atlantic Conference, 1st)

Head Coach: David M. Nelson

Captain: John Scholato

Sep.	22	27	*Lehigh0	W	A
Sep.	29	49	*Gettysburg7	W	A
Oct.	6	28	*Lafayette7	W	H
Oct.	13	19	Buffalo20	L	A
Oct.	20	10	Villanova22	L	A
Oct.	27	34	Connecticut0	W	H
Nov.	3	20	*Temple8	W	A
Nov.	10	23	Rutgers6	W	H
Nov.	17	9	*Bucknell6	W	H

Middle Atlantic Conference Champions Lambert Cup Eastern Champions

1963

(8-0, 4-0 *Middle Atlantic Conference, 1st)

Head Coach: David M. Nelson

Captain: Paul Chesmore

Sep.	28	30	*Lehigh0	W	H
Oct.	5	64	*Gettysburg18	W	H
Oct.	12	61	*Lafayette0	W	A
Oct.	19	29	Ohio University12	W	A
Oct.	26	26	Connecticut13	W	A
Nov.	2	34	Buffalo6	W	H
Nov.	9	32	*Temple23	W	H
Nov.	16	14	Rutgers3	W	A

Middle Atlantic Conference Champions Lambert Cup Eastern Champions United Press International Small College National Champions



Hall of Fame head coach David Nelson enjoyed his only national title during the 1963 season as he led the Blue Hens to a perfect 8-0 mark and the United Press International Small College crown. Delaware outscored opponents 290-75 and was rarely tested.

1964

(4-5, 3-3 *Middle Atlantic Conference, 4th)

Head Coach: David M. Nelson

Captain: Ron Bianco

Sep.	26	36	*Hofstra7	W	H	9,433
Oct.	3	19	*Gettysburg22	L	A	
Oct.	10	28	*Lafayette0	W	H	9,389
Oct.	17	0	Villanova34	L	A	
Oct.	24	46	*Lehigh8	W	A	
Oct.	31	0	Buffalo37	L	A	
Nov.	7	0	*Temple21	L	H	7,220
Nov.	14	27	Rutgers18	W	H	8,266
Nov.	21	14	*Bucknell21	L	H	9,182

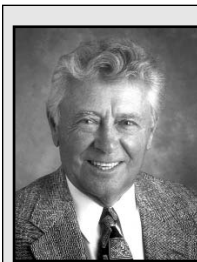
1965

(5-4, 3-3 *Middle Atlantic Conference, 4th)

Head Coach: David M. Nelson

Captain: James Mueller

Sep.	25	6	Hofstra17	L	A	
Oct.	2	15	Gettysburg0	W	H	11,303
Oct.	9	40	Lafayette7	W	A	
Oct.	16	24	Villanova21	W	H	12,288
Oct.	23	42	Lehigh21	W	A	
Oct.	30	22	Temple31	L	A	
Nov.	6	0	Buffalo22	L	H	10,401
Nov.	13	50	Boston University7	W	H	7,874
Nov.	20	14	Bucknell26	L	A	



**HAROLD R.
"TUBBY"
RAYMOND**

HEAD COACH
1966-2001

300-119-3, .714

1966

(6-3, 6-0 *Middle Atlantic Conference, 1st)

Head Coach: Harold R. "Tubby" Raymond

Captain: Ed Sand

Sep.	24	35	*Hofstra13	W	H	10,140
Oct.	1	3	*Gettysburg0	W	A	
Oct.	8	23	*Lafayette15	W	H	10,024
Oct.	15	14	Villanova16	L	A	
Oct.	22	41	*Lehigh0	W	H	13,132
Oct.	29	20	*Temple14	W	A	
Nov.	5	6	Buffalo36	L	A	

Nov.	12	14	Boston University42	L	A	
Nov.	19	45	*Bucknell20	W	H	10,099

Middle Atlantic Conference Champions

1967

(2-7, 2-3 *Middle Atlantic Conference, 4th)

Head Coach: Harold R. "Tubby" Raymond

Captain: Art Smith

Sep.	23	17	Rhode Island28	L	H	10,894
Sep.	30	13	Villanova21	L	H	10,425
Oct.	7	31	*Hofstra33	L	A	
Oct.	14	21	Rutgers29	L	A	
Oct.	21	21	*Lafayette2	W	A	
Oct.	28	17	*Temple26	L	H	13,255
Nov.	4	19	Buffalo38	L	H	6,523
Nov.	11	33	*Lehigh10	W	H	8,275
Nov.	18	6	*Bucknell35	L	A	

1968

(8-3, 5-0 *Middle Atlantic Conference, 1st)

Head Coach: Harold R. "Tubby" Raymond

Captain: Bob Novotny

Sep.	21	35	*Hofstra0	W	H	10,840
Sep.	28	0	Villanova16	L	A	12,025
Oct.	5	28	Massachusetts23	W	H	13,261
Oct.	12	17	Buffalo29	L	A	8,536
Oct.	19	28	*West Chester0	W	H	8,667
Oct.	26	50	*Temple27	W	A	7,500
Nov.	2	14	Rutgers23	L	A	18,000
Nov.	9	37	*Lehigh13	W	A	9,000
Nov.	16	41	Boston University13	W	H	10,350
Nov.	23	38	*Bucknell12	W	H	10,924
Dec.	14	31	#Indiana (PA)24	W	N	9,849

(Boardwalk Bowl - Atlantic City, NJ)

Middle Atlantic Conference Champions Lambert Cup Eastern Champions

1969

(9-2, 6-0 *Middle Atlantic Conference, 1st)

Head Coach: Harold R. "Tubby" Raymond

Captain: Joe Purzycki

Sep.	20	52	*Gettysburg0	W	H	12,495
Sep.	27	33	Villanova36	L	H	14,017
Oct.	4	33	Massachusetts21	W	A	10,500
Oct.	11	28	*Hofstra13	W	A	2,600
Oct.	18	24	*West Chester8	W	H	12,706
Oct.	25	33	*Temple0	W	H	15,182
Nov.	1	44	Rutgers0	W	H	14,490
Nov.	8	42	*Lehigh14	W	H	14,093
Nov.	15	14	Boston University30	L	A	9,246
Nov.	22	49	*Bucknell21	W	A	5,100

ALL-TIME RESULTS

Dec. 13 31 #North Carolina Central13 W N 10,585
(Boardwalk Bowl - Atlantic City, NJ)

Middle Atlantic Conference Champions Lambert Cup Eastern Co-Champions

1970

(9-2)

Head Coach: Harold R. "Tubby" Raymond
Captain: Ray Holcomb

Sep.	12	39	West Chester22	W	H	17,318
Sep.	19	34	Gettysburg7	W	A	4,892
Sep.	26	53	New Hampshire12	W	H	13,348
Oct.	3	31	Villanova34	L	H	19,067
Oct.	10	36	Lafayette20	W	H	17,116
Oct.	17	54	Rutgers21	W	A	16,500
Oct.	31	15	Temple13	W	A	14,000
Nov.	7	13	Lehigh36	L	A	13,000
Nov.	14	51	Boston University19	W	H	14,949
Nov.	21	42	Bucknell0	W	H	16,827
Dec.	12	38	#Morgan State23	W	N	10,078

(Boardwalk Bowl - Atlantic City, NJ)

Lambert Cup Eastern Champions

1971

(10-1)

Head Coach: Harold R. "Tubby" Raymond
Captain: Ralph Borgess

Sep.	18	39	Gettysburg7	W	H	15,414
Sep.	25	40	New Hampshire7	W	A	10,458
Oct.	2	23	Villanova15	W	H	20,284
Oct.	9	49	Lafayette0	W	A	11,000
Oct.	16	48	Rutgers7	W	H	16,709
Oct.	23	47	West Chester8	W	H	17,648
Oct.	30	27	Temple32	L	H	22,582
Nov.	6	49	Lehigh22	W	H	21,191
Nov.	13	54	Boston University0	W	A	3,500
Nov.	20	46	Bucknell0	W	A	7,800
Dec.	11	72	#C.W. Post22	W	N	10,614

(Boardwalk Bowl - Atlantic City, NJ)

Lambert Cup Eastern Champions

Associated Press Small College

National Champions

United Press International Small College

National Champions

1972

(10-0)

Head Coach: Harold R. "Tubby" Raymond
Captain: Dennis Johnson

Sep.	16	28	Lehigh22	W	H	19,657
Sep.	23	64	Gettysburg7	W	A	5,200
Sep.	30	49	Boston University12	W	H	15,552
Oct.	7	27	Lafayette0	W	H	18,194
Oct.	14	32	Connecticut7	W	A	13,141
Oct.	21	31	West Chester14	W	H	19,216
Oct.	28	28	Temple9	W	A	14,363
Nov.	4	14	Villanova7	W	A	11,402
Nov.	11	62	Maine0	W	H	18,016
Nov.	18	20	Bucknell3	W	H	22,648

Lambert Cup Eastern Champions

AP Small College National Champions

UPI Small College National Champions

1973

(8-4)

Head Coach: Harold R. "Tubby" Raymond
Captain: Jeff Cannon

Sep.	8	45	Akron24	W	H	18,610
Sep.	15	49	West Chester14	W	H	18,444
Sep.	22	60	Gettysburg18	W	H	15,949
Sep.	29	21	Lehigh9	W	A	14,500

Oct.	6	56	Baldwin-Wallace18	W	H	16,849
Oct.	13	35	Connecticut7	W	H	20,751
Oct.	20	7	Rutgers24	L	A	21,000
Oct.	27	8	Temple31	L	H	23,619
Nov.	3	7	Villanova24	L	A	14,810
Nov.	10	28	Maine14	W	A	2,200
Nov.	17	50	Bucknell0	W	A	8,500
Dec.	1	8	Grambling17	L	N	12,043

(NCAA College Div. Playoffs, Atlantic City, NJ)

Lambert Cup Eastern Co-Champions

1974

(12-2)

Head Coach: Harold R. "Tubby" Raymond
Captain: Ed Clark

Sep.	14	14	Akron0	W	A	7,216
Sep.	21	48	The Citadel12	W	H	18,893
Sep.	28	34	New Hampshire10	W	H	19,388
Oct.	5	29	McNeese State24	W	H	19,239
Oct.	12	15	Connecticut6	W	A	13,695
Oct.	19	14	Lehigh7	W	A	14,500
Oct.	26	17	Temple21	L	A	37,265
Nov.	2	49	Villanova7	W	H	22,091
Nov.	9	39	Maine13	W	H	17,591
Nov.	16	31	West Chester3	W	H	20,002
Nov.	23	51	Bucknell16	W	H	16,583
Nov.	30	35	Youngstown State14	W	H	15,576

(NCAA Quarterfinals)

Dec.	7	49	#Nevada-Las Vegas11	W	N	10,000
------	---	----	-------------------	---------	---	---	--------

(NCAA Semifinals - Baton Rouge, LA)

Dec.	14	14	#Central Michigan54	L	N	14,137
------	----	----	-------------------	---------	---	---	--------

(NCAA Division II Championship Game
Camelia Bowl - Sacramento, CA)

ECAC Team of the Year

Lambert Cup Eastern Champions

NCAA Division II National Runner-Up

1975

(8-3)

Head Coach: Harold R. "Tubby" Raymond
Captain: Curt Morgan

Sep.	13	10	Virginia Military Institute9	W	A	8,800
Sep.	20	8	Wittenberg14	L	H	20,132

Sep.	27	16	New Hampshire7	W	A	10,212
Oct.	4	21	Akron0	W	H	18,640
Oct.	11	29	Connecticut0	W	H	15,182
Oct.	18	23	Lehigh35	L	H	21,105
Oct.	25	0	Temple45	L	H	22,062
Nov.	1	14	Villanova13	W	A	8,900
Nov.	8	35	Maine9	W	H	18,361
Nov.	15	35	West Chester7	W	H	18,488
Nov.	22	46	Indiana State7	W	H	17,726

1976

(8-3-1)

Head Coach: Harold R. "Tubby" Raymond
Captain: Gary Bello

Sep.	11	37	Eastern Kentucky21	W	H	17,528
Sep.	18	15	The Citadel17	L	A	21,570
Sep.	25	59	North Dakota17	W	H	17,865
Oct.	2	18	Temple16	W	A	15,851
Oct.	9	15	William & Mary13	W	A	15,500
Oct.	16	24	Villanova24	T	H	20,578
Oct.	23	6	Virginia Military Institute10	L	H	21,134
Oct.	30	30	Connecticut6	W	A	9,956
Nov.	6	63	Davidson0	W	H	16,130
Nov.	13	42	West Chester7	W	H	14,378
Nov.	20	36	Maine0	W	H	14,136
Nov.	27	17	Northern Michigan28	L	H	12,590

(NCAA Quarterfinals)

Lambert Cup Eastern Champions

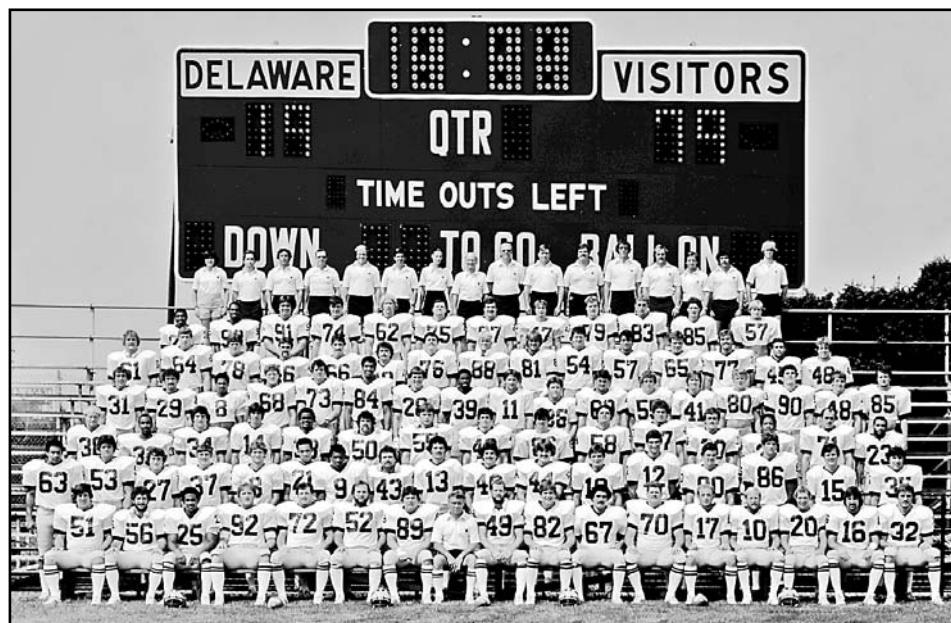
ECAC Team of the Year

1977

(6-3-1)

Head Coach: Harold R. "Tubby" Raymond
Captain: Dave Bachkosky

Sep.	10	7	Eastern Kentucky24	L	A	16,500
Sep.	17	17	West Chester15	W	H	19,497
Sep.	24	29	Morgan State29	T	H	18,422
Oct.	1	3	Temple6	L	H	19,677
Oct.	8	23	The Citadel7	W	H	15,918
Oct.	15	16	Villanova33	L	A	13,800
Oct.	22	60	Middle Tennessee7	W	H	16,479
Oct.	29	28	Connecticut0	W	H	20,206
Nov.	5	41	Davidson7	W	A	2,000
Nov.	19	21	Colgate3	W	H	23,029



The 1979 Blue Hens won their third national title for head coach Tubby Raymond and the fifth in school history with a 38-21 win over Youngstown State in the NCAA Division II Zia Bowl Championship Game at Albuquerque, NM. Delaware head coach K.C. Keeler is in the fifth row, five from the left.

ALL-TIME RESULTS

1978

(10-4)

Head Coach: Harold R. "Tubby" Raymond
Captain: John Morrison

Sep. 9	37	Rhode Island0	W	H	18,544
Sep. 16	56	West Chester0	W	H	19,241
Sep. 23	35	Western Illinois7	W	H	17,119
Sep. 30	7	Temple38	L	A	26,745
Oct. 7	17	Lehigh27	L	A	14,000
Oct. 14	26	North Carolina A&T0	W	H	19,304
Oct. 21	53	Middle Tennessee3	W	A	3,500
Oct. 28	14	The Citadel21	L	A	13,155
Nov. 4	48	Maine0	W	H	19,627
Nov. 11	23	Villanova22	W	H	20,189
Nov. 18	38	Colgate29	W	H	19,003
Nov. 25	42	Jacksonville State27	W	H	11,235

(NCAA Quarterfinals)

Dec. 2	41	Winston-Salem0	W	H	10,963
--------	----	---------------	--------	---	---	--------

(NCAA Semifinals)

Dec. 9	9	#Eastern Illinois10	L	N	5,500
--------	---	-------------------	---------	---	---	-------

(NCAA II Championship, Longview, TX)

ECAC Team of the Year

NCAA Division II National Runner-Up

1979

(13-1)

Head Coach: Harold R. "Tubby" Raymond
Captain: Jim Brandimarte

Sep. 8	34	Rhode Island14	W	A	7,141
Sep. 15	42	West Chester6	W	H	18,975
Sep. 22	14	Temple31	L	H	22,068
Sep. 29	65	U.S. Merchant Marines0	W	H	17,081
Oct. 6	21	Lehigh14	W	H	20,636
Oct. 13	21	Villanova20	W	A	14,500
Oct. 20	47	C.W. Post19	W	H	20,343
Oct. 27	40	William & Mary0	W	H	19,728
Nov. 3	31	Maine14	W	H	18,679
Nov. 10	51	#Youngstown State45	W	A	13,442
Nov. 17	24	#Colgate16	W	A	5,000
Nov. 24	58	Virginia Union28	W	H	14,357

(NCAA Quarterfinals)

Dec. 1	60	Mississippi College10	W	H	13,787
--------	----	---------------------	---------	---	---	--------

(NCAA Semifinals)

Dec. 8	38	#Youngstown State21	W	N	4,000
--------	----	-------------------	---------	---	---	-------

(NCAA II Champ. Game, Zia Bowl, Albuquerque, NM)

Lambert Cup Eastern Champions

ECAC Team of the Year

NCAA Division II National Champions

1980

(9-2)

Head Coach: Harold R. "Tubby" Raymond
Captain: Bob Lundquist

Sep. 13	28	West Chester7	W	H	20,743
Sep. 20	28	#Temple7	W	A	23,013
Sep. 27	40	Morgan State7	W	H	21,943
Oct. 4	20	Lehigh27	L	A	14,500
Oct. 11	21	Massachusetts17	W	A	10,400
Oct. 18	7	Northern Michigan22	L	H	22,555
Oct. 25	7	William & Mary3	W	A	11,600
Nov. 1	17	Villanova7	W	H	22,680
Nov. 8	59	U.S. Merchant Marines13	W	H	15,508
Nov. 15	35	Maine6	W	H	16,153
Nov. 22	20	Youngstown State13	W	H	17,812

1981

(9-3)

Head Coach: Harold R. "Tubby" Raymond
Captain: Ed Braceland

Sep. 12	38	Western Kentucky14	W	A	13,000
Sep. 19	13	Temple7	W	H	22,379
Sep. 26	61	Princeton8	W	A	10,110
Oct. 3	21	Lehigh24	L	H	22,784
Oct. 10	38	Massachusetts15	W	H	19,581
Oct. 17	21	Youngstown State24	L	H	18,645

Oct. 24	35	Rhode Island15	W	H	20,135
Nov. 7	40	Pennsylvania6	W	A	10,117
Nov. 14	42	Maine35	W	H	16,743
Nov. 21	31	West Chester14	W	H	17,767
Nov. 27	35	Connecticut26	W	A	5,084
Dec. 5	28	Eastern Kentucky35	L	A	8,100

(NCAA I-AA Quarterfinals)

ECAC Team of the Year

1982

(12-2)

Head Coach: Harold R. "Tubby" Raymond
Captain: Paul Brown

Sep. 11	31	Western Kentucky0	W	H	16,682
Sep. 18	0	Temple22	L	A	25,463
Sep. 25	35	Princeton17	W	H	18,147
Oct. 2	20	Lehigh19	W	A	14,000
Oct. 9	14	Massachusetts13	W	A	10,411
Oct. 16	48	C.W. Post7	W	H	18,868
Oct. 23	51	Towson State7	W	H	20,232
Oct. 30	62	William & Mary21	W	H	18,005
Nov. 13	55	West Chester13	W	H	20,012
Nov. 20	46	Bucknell6	W	A	3,200
Nov. 26	13	Connecticut7	W	H	13,062
Dec. 4	20	Colgate13	W	H	11,448

(NCAA I-AA Quarterfinals)

Dec. 11	17	#Louisiana Tech0	W	A	8,000
---------	----	-----------------	--------	---	---	-------

(NCAA I-AA Semifinals)

Dec. 18	14	#Eastern Kentucky17	L	N	11,257
---------	----	-------------------	---------	---	---	--------

(NCAA I-AA Championship Game, Pioneer Bowl, Wichita Falls, TX)

ECAC Team of the Year

Lambert Cup Eastern Champions

NCAA I-AA National Runner-Up

1983

(4-7)

Head Coach: Harold R. "Tubby" Raymond
Captain: Greg Robertson

Sep. 10	27	West Chester35	L	H	15,818
Sep. 17	30	William & Mary13	W	A	13,440
Sep. 24	40	Pennsylvania7	W	H	17,568
Oct. 1	19	Lehigh24	L	H	18,099
Oct. 8	16	Massachusetts13	W	H	19,737
Oct. 15	4	Towson State13	L	H	17,331
Oct. 22	16	Temple23	L	H	18,096
Oct. 29	26	James Madison23	W	A	9,200
Nov. 5	9	Rhode Island19	L	A	5,307
Nov. 12	0	Holy Cross24	L	H	16,432
Nov. 19	7	Bucknell20	L	H	15,722

1984

(8-3)

Head Coach: Harold R. "Tubby" Raymond
Captain: Dan Reeder

Sep. 8	32	James Madison3	W	H	16,419
Sep. 15	21	William & Mary23	L	H	15,928
Sep. 22	21	West Chester20	W	H	16,618
Sep. 29	6	Lehigh46	L	A	12,000
Oct. 6	3	Boston University27	L	A	4,303
Oct. 13	37	Maine7	W	H	19,626
Oct. 20	34	Temple19	W	A	9,526
Oct. 27	56	Towson State23	W	H	18,701
Nov. 3	76	Morgan State0	W	H	12,095
Nov. 10	27	Massachusetts14	W	H	13,367
Nov. 17	28	Bucknell9	W	H	15,088

1985

(7-4)

Head Coach: Harold R. "Tubby" Raymond
Captain: Vaughn Dickinson

Sep. 7	29	Rhode Island13	W	H	15,465
Sep. 14	16	#Navy (HTS)13	W	H	23,115
Sep. 21	16	#William & Mary (HTS)17	L	A	11,500
Sep. 28	6	#Holy Cross (WSMW)22	L	A	16,111
Oct. 5	37	West Chester22	W	H	21,751

Oct. 12	21	Boston University0	W	H	20,364
Oct. 19	31	Bucknell7	W	A	7,640
Oct. 26	14	Lehigh16	L	H	18,350
Nov. 2	17	Temple10	W	H	19,614
Nov. 9	27	Massachusetts24	W	A	9,121
Nov. 16	7	Maine10	L	H	15,763

1986

(9-4, 5-2 *Yankee Conference, 11st)

Head Coach: Harold R. "Tubby" Raymond
Captain: Joe McGrail

Sep. 6	44	*Rhode Island10	W	H	17,337
Sep. 13	21	*New Hampshire [OT]28	L	H	17,294
Sep. 20	33	West Chester31	W	H	22,221
Sep. 27	20	*Richmond19	W	A	17,423
Oct. 11	41	#Massachusetts (NESN)13	W	A	13,888
Oct. 18	18	William & Mary24	L	H	23,945
Oct. 25	28	Lehigh17	W	H	17,685
Nov. 1	34	#Maine (WABI)31	W	A	3,500
Nov. 8	35	*Connecticut7	W	H	15,855
Nov. 15	27	*Navy (Freedom Network)14	W	A	30,089
Nov. 22	35	*Boston University45	L	A	2,441
Nov. 29	51	William & Mary17	W	A	5,700

(NCAA I-AA Opening Round)

Dec. 6	14	Arkansas State55	L	H	12,018
--------	----	----------------	---------	---	---	--------

(NCAA I-AA Quarterfinals)

Yankee Conference Tri-Champions

1987

(5-6, 2-5 *Yankee Conference, 15th)

Head Coach: Harold R. "Tubby" Raymond
Captain: Chris Coyne

Sep. 12	13	*Rhode Island26	L	A	7,028
Sep. 19	28	West Chester21	W	H	20,018
Sep. 26	21	*Richmond28	L	H	22,160
Oct. 3	21	*New Hampshire45	L	A	6,826
Oct. 10	37	*Massachusetts34	W	H	21,764
Oct. 17	38	William & Mary14	W	A	12,103
Oct. 24	28	Lehigh24	W	A	14,110
Oct. 31	56	*Maine [2 OT]59	L	H	15,766
Nov. 7	19	#Connecticut (NESN)20	L	A	3,498
Nov. 14	22	Navy31	L	H	23,040
Nov. 21	17	*Boston University [OT]10	W	H	14,145

1988

(7-5, 6-2 *Yankee Conference, 11st)

Head Coach: Harold R. "Tubby" Raymond
Captains: Jim Borkowski, Tim Healy

Sep. 10	3	Navy30	L	A	22,967
Sep. 17	17	*Rhode Island23	L	H	16,093
Sep. 24	27	*Richmond10	W	A	15,026
Oct. 1	21	*New Hampshire20	W	A	10,643
Oct. 8	38	William & Mary35	W	H	20,079
Oct. 15	10	#Villanova (WGBS)7	W	A	13,400
Oct. 22	10	*Massachusetts7	W	H	22,301
Oct. 29	31	#Maine (WLBZ)14	W	A	4,055
Nov. 5	20	*Connecticut21	L	H	14,846
Nov. 12	13	West Chester33	L	H	16,904
Nov. 19	38	*Boston University18	W	H	14,202
Nov. 26	7	Furman21	L	A	7,487

(NCAA I-AA Opening Round)

Yankee Conference Co-Champions

1989

(7-4, 5-3 *Yankee Conference, 14th)

Head Coach: Harold R. "Tubby" Raymond
Captain: Mike McCall

Sep. 9	28	#Boston Univ. (NESN)21	W	A	3,329
Sep. 16	21	#Rhode Island (WNS)12	W	A	6,218
Sep. 23	41	West Chester21	W	H	19,293
Sep. 30	17	*New Hampshire27	L	H	14,611
Oct. 7	24	William & Mary27	L	A	14,397
Oct. 14	11	*Villanova20	L	H	17,890
Oct. 21	21	*Massachusetts14	W	A	4,780
Oct. 28	35	*Maine28	W	H	22,904
Nov. 4	17	*Connecticut21	L	A	9,467
Nov. 11	33	*Richmond17	W	H	20,666
Nov. 18	10	Navy9	W	H	20,492

ALL-TIME RESULTS

1990

(6-5, 5-3 *Yankee Conference, 12nd)
Head Coach: Harold R. "Tubby" Raymond
Captains: Marc Sydnor, Tom Bockius

Sep.	8	34	*Boston University	20	W	H	15,562
Sep.	15	7	#N. Hampshire (WMUR)	34	L	A	6,385
Sep.	22	13	West Chester	12	W	H	16,423
Sep.	29	24	*Rhode Island	19	W	H	13,713
Oct.	6	12	William & Mary	22	L	H	21,378
Oct.	13	19	*Villanova (WGBS)	15	W	A	8,850
Oct.	20	3	*Massachusetts	17	L	H	22,209
Oct.	27	10	#Maine (WLZ)	17	L	A	9,281
Nov.	3	35	*Connecticut	21	W	H	15,417
Nov.	10	32	*Richmond	25	W	A	5,090
Nov.	17	27	Navy	31	L	A	25,284

1991

(10-2, 7-1 *Yankee Conference, 11st)
Head Coach: Harold R. "Tubby" Raymond
Captains: Marc Sydnor, Bob Wolford

Aug.	31	28	West Chester (N)	0	W	H	18,237
Sep.	7	24	*Massachusetts	7	W	A	9,527
Sep.	14	28	William & Mary	21	W	A	13,579
Sep.	21	42	*Rhode Island	7	W	A	7,871
Oct.	5	28	*New Hampshire	45	L	H	22,304
Oct.	12	35	*Boston University	21	W	A	1,839
Oct.	19	38	*Villanova	28	W	H	18,045
Oct.	26	29	Navy	25	W	A	30,490
Nov.	2	34	*Maine	10	W	H	22,601
Nov.	9	49	*Connecticut	18	W	A	7,424
Nov.	16	23	*Richmond	17	W	H	17,812
Nov.	30	35	James Madison [2 OT]	42	L	H	14,905

(NCAA I-AA Opening Round)

Yankee Conference Tri-Champions Lambert Cup Champions

1992

(11-3, 7-1 *Yankee Conference, 1st)
Head Coach: Harold R. "Tubby" Raymond
Captains: Bill Vergantino, Warren McIntire

Sep.	12	33	*Massachusetts	13	W	H	17,299
Sep.	19	31	*Rhode Island	14	W	H	15,673
Sep.	26	20	West Chester	21	L	H	15,331
Oct.	3	42	#New Hampshire (WMUR)	22	W	A	8,709
Oct.	10	49	*Boston University	14	W	H	20,614
Oct.	17	21	*Villanova	20	W	A	12,000
Oct.	24	37	Navy	21	W	A	32,189
Oct.	31	57	#Maine (WLZ)	13	W	A	5,327
Nov.	7	33	*Connecticut	7	W	H	22,911
Nov.	14	21	*Richmond	29	L	A	15,822
Nov.	21	55	Towson State	27	W	H	15,262
Nov.	28	56	Samford	21	W	H	11,364

(NCAA I-AA Opening Round)

Dec.	5	41	Northeast Louisiana	18	W	A	10,172
------	---	----	---------------------	----	---	---	--------

(NCAA I-AA Quarterfinals)

Dec.	12	7	#Marshall (THSN)	28	L	A	16,323
------	----	---	------------------	----	---	---	--------

(NCAA I-AA Semifinals)

Yankee Conference Champions ECAC Team of the Year

1993

(9-4, 6-2 *Yankee Conf., 2nd Mid-Atlantic Division)
Head Coach: Harold R. "Tubby" Raymond
Captains: Scott Acker, Matt Morrill

Sep.	4	62	#Lehigh (WVLM)	21	W	H	14,007
Sep.	11	42	*William & Mary	35	W	H	13,612
Sep.	18	32	*Rhode Island	11	W	A	3,556
Sep.	25	56	West Chester	41	W	H	16,104
Oct.	9	38	*James Madison	42	L	A	11,000
Oct.	16	19	*Villanova (WTFX)	7	W	H	18,251
Oct.	23	29	*Massachusetts	43	L	A	13,102
Oct.	30	21	*Maine	19	W	H	18,399
Nov.	6	30	Towson State	32	L	H	20,709
Nov.	13	48	*Richmond	10	W	H	13,444
Nov.	20	28	*Northeastern	23	W	A	2,805

Nov.	27	49	#Montana (KPAX)	48	W	A	11,271
------	----	----	-----------------	----	---	---	--------

(NCAA I-AA Opening Round)

Dec.	4	31	#Marshall (THSN)	34	L	A	13,687
------	---	----	------------------	----	---	---	--------

(NCAA I-AA Quarterfinals)

1994

(7-3-1, 5-3 *Yankee Conference, 3rd Mid-Atlantic Division)
Head Coach: Harold R. "Tubby" Raymond
Captains: Daryl Brown, Pat Mulhern

Sep.	10	7	*William & Mary	31	L	A	12,136
Sep.	17	38	*Villanova (WTFX) [OT]	31	W	A	9,125
Sep.	24	58	West Chester	55	W	H	16,533
Oct.	1	13	*Maine	19	L	A	7,352
Oct.	8	10	*James Madison	30	L	H	15,970
Oct.	15	28	*Richmond	3	W	A	6,215
Oct.	22	52	*Massachusetts	14	W	H	18,978
Oct.	29	42	*Northeastern	20	W	H	20,047
Nov.	5	45	Lehigh	29	W	A	10,480
Nov.	12	41	#Hofstra (SC-NY)	41	T	H	12,630
Nov.	19	26	*Rhode Island	7	W	H	11,646

1995

(11-2, 8-0 *Yankee Conference, 1st, Mid-Atlantic Division)
Head Coach: Harold R. "Tubby" Raymond
Captains: Larry McSeed, Shannon Trostle

Sep.	9	49	West Chester	21	W	H	16,544
Sep.	16	28	*Villanova	7	W	H	15,354
Sep.	23	41	#Boston Univ. (TCI)	29	W	A	4,697
Sep.	30	37	#Northeastern (TCI)	10	W	A	4,100
Oct.	7	34	#Youngstown St. (CSM)	13	W	H	16,459
Oct.	14	15	*Richmond	0	W	H	18,926
Oct.	21	48	#James Madison (TCI)	19	W	A	13,500
Oct.	28	61	*Maine	0	W	H	22,293
Nov.	4	23	*William & Mary	20	W	H	18,439
Nov.	11	7	Navy	31	L	A	30,169
Nov.	18	24	#Rhode Island (TCI)	19	W	A	7,890
Nov.	25	38	#Hofstra (SC-NY)	17	W	H	13,295

(NCAA I-AA Opening Round)

Dec.	2	18	#McNeese State (TCI)	52	L	A	17,239
------	---	----	----------------------	----	---	---	--------

(NCAA I-AA Quarterfinals)

Yankee Conference Champions Lambert Cup Eastern Champions ECAC Team of the Year

1996

(8-4, 6-2 *Yankee Conference, 2nd Mid-Atlantic Div.)
Head Coach: Harold R. "Tubby" Raymond
Capt.: Leo Hamlett, Chris Kumpon, Geof Gardner, Kenny Bailey

Sep.	7	49	Lehigh	7	W	H	15,624
Sep.	14	0	#Villanova (Comcast)	27	L	A	12,079
Sep.	21	24	West Chester	17	W	H	15,897
Sep.	28	27	#Maine (Sub. Cable)	17	W	A	6,033
Oct.	5	50	*Boston University	16	W	H	13,543
Oct.	12	14	#Richmond (Sub. Cable)	7	W	A	7,814
Oct.	19	24	*Northeastern	14	W	H	16,806
Oct.	26	27	*James Madison	13	W	H	22,291
Nov.	2	7	#William & Mary (SC) [OT]	10	L	A	8,177
Nov.	9	14	Navy	30	L	A	33,908
Nov.	16	43	*Rhode Island	27	W	H	14,341
Nov.	30	14	#Marshall (THSN)	59	L	A	15,429

(NCAA I-AA Opening Round)

1997

(12-2, 7-1 *Atlantic 10 Conference, 2nd Mid-Atlantic Div.)
Head Coach: Harold R. "Tubby" Raymond
Captain: Dorrell Green

Sep.	6	27	#N. Hampshire (Sub. Cable)	10	W	A	4,465
Sep.	13	25	*Villanova	35	L	H	18,565
Sep.	20	28	West Chester	7	W	H	14,203
Sep.	27	38	#Northeastern (A-10 TV)	14	W	A	4,100
Oct.	4	49	#Boston Univ. (Sub. Cable)	17	W	A	2,023
Oct.	11	24	*Richmond	7	W	H	14,324
Oct.	18	49	#J. Madison (Sub. Cable)	27	W	A	12,000
Oct.	25	40	#Massachusetts (Sub. Cable)	9	W	A	5,317
Nov.	1	14	*William & Mary	0	W	H	18,707
Nov.	8	37	#Connecticut (CPTV)	29	W	H	20,788
Nov.	15	24	#Lehigh (Sub. Cable)	19	W	A	7,122

Nov.	29	24	#Hofstra (Fox Spts.-NY)	14	W	H	14,075
------	----	----	-------------------------	----	---	---	--------

(NCAA I-AA 1st Round)

Dec.	6	16	Georgia Southern	7	W	H	11,203
------	---	----	------------------	---	---	---	--------

(NCAA I-AA Quarterfinal)

Dec.	13	21	#McNeese State (MSTV)	23	L	H	14,461
------	----	----	-----------------------	----	---	---	--------

(NCAA I-AA Semifinal)

Lambert Cup Eastern Champions

1998

(7-4, 4-4 *Atlantic 10 Conference, 4th)
Head Coach: Harold R. "Tubby" Raymond
Captains: Bryan Soltes

Sep.	3	33	Massachusetts	30	W	H	20,744
Sep.	12	31	#Villanova (CSN) [OT]	34	L	A	10,170
Sep.	19	42	West Chester	21	W	H	18,424
Sep.	26	31	*New Hampshire	7	W	H	22,043
Oct.	3	27	*Northeastern	20	W	H	18,828
Oct.	10	45	*William & Mary (TSM)	52	L	A	7,443
Oct.	17	30	#Youngstown St. (YSTV)	20	W	A	17,107
Oct.	31	27	*Maine	39	L	H	18,532
Nov.	7	59	*Connecticut	17	W	A	9,105
Nov.	14	6	#Richmond (A-10 TV)	45	L	A	13,866
Nov.	21	28	#James Madison (A-10 TV)	14	W	H	16,371

1999

(7-4, 5-3 *Atlantic 10 Conference, 4th)
Head Coach: Harold R. "Tubby" Raymond
Captain: Brian Ginn

Sep.	2	34	*William & Mary (N) [OT]	27	W	H	22,038
Sep.	11	26	The Citadel (N)	16	W	A	14,759
Sep.	18	29	West Chester (N)	10	W	H	19,260
Sep.	25	7	#James Madison (TSM)	21	L	A	10,200
Oct.	2	41	*Richmond	33	W	H	22,082
Oct.	16	35	Lehigh	42	L	H	22,032
Oct.	23	19	#Massachusetts (A-10 TV)	26	L	H	19,590
Oct.	30	37	*Northeastern [OT]	34	W	A	2,131
Nov.	6	14	#New Hampshire (WMUR)	10	W	A	3,444
Nov.	13	35	*Rhode Island	0	W	H	17,227
Nov.	20	45	#Villanova (CSN) [OT]	51	L	A	12,550

2000

(12-2, 7-1 *Atlantic 10 Conference, 1st)
Head Coach: Harold R. "Tubby" Raymond
Captains: Brian McKenna, Craig Cummings

Sep.	2	29	*Rhode Island	7	W	A	3,016
Sep.	9	38	#The Citadel (N) (CN8)	0	W	H	22,075
Sep.	16	44	#Hofstra (N) (MSG)	14	W	A	7,706
Sep.	23	84	West Chester (N)	0	W	H	21,152
Sep.	30	42	*Northeastern	0	W	H	17,811
Oct.	7	24	*Richmond	17	W	A	13,100
Oct.	14	28	*William & Mary	17	W	A	7,416
Oct.	28	33	*James Madison	14	W	H	22,009
Nov.	4	44	*New Hampshire [OT]	45	L	H	21,854
Nov.	11	31	#Massachusetts (A-10 TV)	19	W	A	8,680
Nov.	18	59	#Villanova (CN8)	42	W	H	22,020
Nov.	25	49	Portland State	14	W	H	12,945

(NCAA I-AA Opening Round)

Dec.	2	49	#Lehigh (WVLT)	22	W	H	16,390
------	---	----	----------------	----	---	---	--------

(NCAA I-AA Quarterfinals)

Dec.	9	18	Georgia Southern	27	L	H	15,035
------	---	----	------------------	----	---	---	--------

(NCAA I-AA Semifinals)

Atlantic 10 Conference Champions

Lambert Cup Champions ECAC Team of the Year

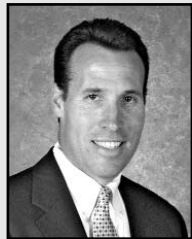
2001

(4-6, 4-5 *Atlantic 10 Conference, 16th)
Head Coach: Harold R. "Tubby" Raymond
Captain: Darrell Edmonds

Aug.	30	7	*Rhode Island (N)	10	L	H	20,794
Sep.	8	7	#Georgia Southern (CSN)	38	L	A	16,105
Sep.	22	35	#Massachusetts (N) (CN8)	7	W	H	20,372
Sep.	29	7	*Northeastern	20	L	A	3,389
Oct.	6	49	*New Hampshire	36	L	A	5,584
Oct.	13	14	#Hofstra (A-10 TV)	39	L	H	20,866
Oct.	20	17	#William & Mary (CN8)	21	L	H	21,563

ALL-TIME RESULTS

Nov. 3	28	#James Madison (A10 TV)3	W	A	10,000
Nov. 10	10	#Richmond (CN8)6	W	H	18,923
Nov. 17	14	*Villanova19	L	A	11,829



**K.C.
KEELER**

HEAD COACH
2002-PRESENT
56-34-0, .622

2002
(6-6, 4-5 *Atlantic 10 Conference, 16th)
Head Coach: K.C. Keeler
Captain: Dan Mulhern

Aug. 29	22	Georgia Southern (N)19	W	H	19,056
Sep. 7	13	*Richmond15	L	A	6,364
Sep. 14	20	The Citadel24	L	A	14,105
Sep. 21	31	West Chester (N)10	W	H	21,064
Sep. 28	42	*William & Mary45	L	A	11,682
Oct. 5	27	#Northeastern (CN8)10	W	H	21,043
Oct. 12	23	*James Madison10	W	H	19,666
Oct. 19	14	*Rhode Island [OT]17	L	A	5,791
Oct. 26	21	#N. Hampshire (A-10 TV)9	W	H	19,866
Nov. 2	7	*Massachusetts17	L	A	11,553
Nov. 9	37	#Maine (WABI)13	W	A	4,792
Nov. 23	34	*Villanova (CN8)38	L	H	20,850

2003
(15-1, 8-1 *Atlantic 10 Conference, 1st)
Head Coach: K.C. Keeler
Captain: Mike Adams, Jason Nerys

Sep. 6	41	The Citadel (N)7	W	H	20,612
Sep. 13	44	*Richmond (N)14	W	H	21,388
Sep. 20	49	West Chester (N)7	W	H	21,002
Sep. 27	24	*Hofstra (CSTV)14	W	A	3,228
Oct. 4	41	*William & Mary (N)27	W	H	20,485
Oct. 11	22	*New Hampshire (A-10 TV)21	W	A	4,815
Oct. 18	55	*Rhode Island10	W	H	20,795
Oct. 25	21	*Navy (HDTV)17	W	A	34,982
Nov. 1	24	*Maine [OT]21	W	H	22,057
Nov. 8	14	*Northeastern24	L	A	4,198
Nov. 15	51	*Massachusetts (A-10 TV) [30T]45	W	H	21,804
Nov. 22	20	*Villanova (CSN)17	W	A	12,253
Nov. 29	48	*Southern Illinois (CSTV)7	W	H	14,572
(NCAA I-AA Opening Round)						
Dec. 6	37	#Northern Iowa (ESPN Reg.)7	W	H	11,881
(NCAA I-AA Quarterfinals)						
Dec. 13	24	#Wofford (ESPN2)9	W	H	14,351
(NCAA I-AA Semifinals)						
Dec. 19	40	#Colgate (N) (ESPN2)0	W	N	14,281
(NCAA I-AA Championship, Chattanooga, TN)						

NCAA I-AA National Champions
Atlantic 10 Co-Champions
Lambert Cup • ECAC Team of the Year

2004
(9-4, 7-1 *Atlantic 10 Conference, 1st-South)
Head Coach: K.C. Keeler
Captain: Sean Bleiler, Sidney Haugabrook

Sep. 2	21	New Hampshire (N)24	L	H	22,727
Sep. 11	21	*Towson (N)17	W	H	22,782
Sep. 18	24	West Chester (N)6	W	H	22,036
Sep. 25	21	#Massachusetts (CN8)7	W	A	11,298
Oct. 2	43	#Maine (CSTV/CN8)38	W	H	22,030
Oct. 16	20	*Hofstra19	W	A	7,050
Oct. 23	31	*William & Mary28	W	H	22,058
Oct. 30	20	*Navy (CN8)34	L	A	34,416
Nov. 6	13	*James Madison20	L	A	12,683
Nov. 13	23	*Richmond14	W	A	5,028

Nov. 20	41	#Villanova (CN8)35	W	H	22,045
Nov. 27	28	#Lafayette (N) (CSTV/CN8)14	W	H	13,707
(NCAA I-AA Opening Round)						
Dec. 4	38	#Wm. & Mary (ESPN Reg.) [2 OT]44	L	A	8,875
(NCAA I-AA Quarterfinals)						

Atlantic 10 South Co-Champions

2005
(6-5, 3-5 *Atlantic 10 Conference, 13rd-South)
Head Coach: K.C. Keeler
Captain: Roger Brown, Sonny Riccio

Sep. 10	34	#Lehigh (N) (OT) (CN8)33	W	H	22,537
Sep. 17	42	West Chester (N)21	W	H	22,331
Sep. 24	35	Holy Cross (N)23	W	H	22,036
Oct. 1	31	*Towson35	L	A	10,778
Oct. 8	6	*Hofstra (A-10 TV)10	L	H	22,030
Oct. 15	10	*Richmond20	L	A	3,115
Oct. 22	34	#James Madison (CSTV)28	W	H	22,059
Oct. 29	15	#Maine (CN8)25	L	A	4,060
Nov. 5	7	#Massachusetts (CN8)35	L	H	22,078
Nov. 12	22	*William & Mary21	W	A	8,709
Nov. 19	38	#Villanova (CN8)13	W	A	9,611

2006
(5-6, 3-5 *Atlantic 10 Conference, 14th-South)
Head Coach: K.C. Keeler
Captain: Ryan Carly, Kyle Campbell, KeiAndre Hepburn

Sep. 9	30	West Chester (N)7	W	H	22,329
Sep. 16	10	Albany (N)17	L	H	22,016
Sep. 23	24	*Rhode Island17	W	A	2,577
Sep. 30	49	#New Hampshire (N) (CN8)52	L	H	22,055
Oct. 7	24	*Northeastern27	L	A	3,125
Oct. 14	10	Hofstra6	W	H	21,688
Oct. 21	28	*Richmond (N) (CN8)24	W	A	6,200
Oct. 28	35	*Towson49	L	H	22,136
Nov. 4	24	#James Madison (N) (CN8)44	L	A	16,144
Nov. 11	28	*William & Mary14	W	H	20,655
Nov. 18	27	#Villanova (CN8)28	L	H	21,894

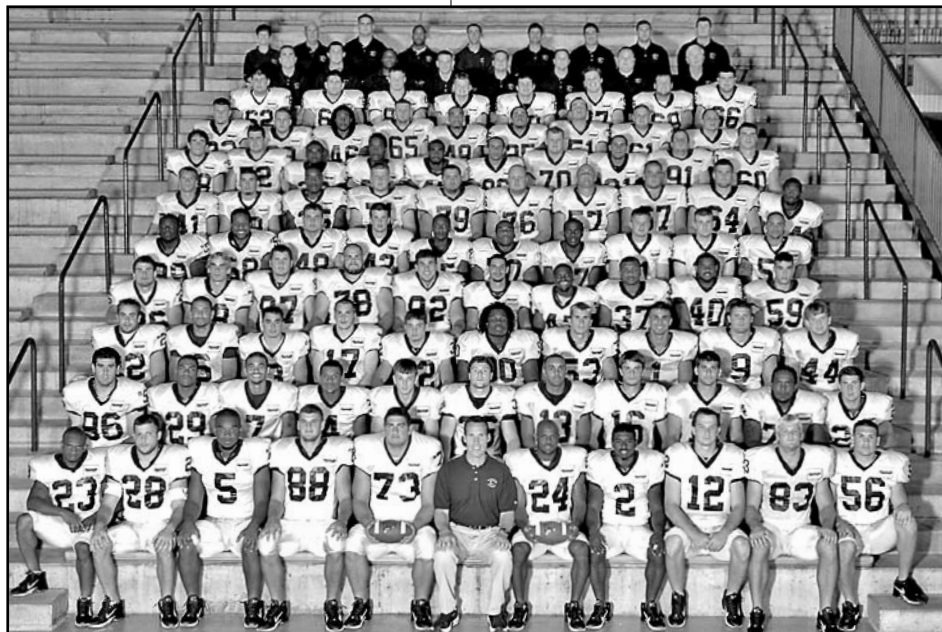
2007
(11-4, 5-3 *Colonial Athletic Association, 13rd-South)
Head Coach: K.C. Keeler
Captain: Matt Marcorelle, Omar Cuff, Mike Byrne

Aug. 30	49	#William & Mary (N) (CN8)31	W	A	11,639
Sep. 8	41	West Chester (N)14	W	H	22,495
Sep. 15	38	*Rhode Island (CN8)9	W	H	22,064
Sep. 22	27	*Towson (CSN)7	W	A	10,856
Sep. 29	42	Monmouth7	W	H	21,431
Oct. 6	30	#New Hampshire (CN8)35	L	A	7,115
Oct. 13	30	*Northeastern20	W	H	21,570
Oct. 27	59	#Navy (CSTV)52	W	A	35,213
Nov. 3	37	#James Madison (CSN)34	W	H	22,061
Nov. 10	56	*Richmond [SOT]62	L	H	21,187
Nov. 17	10	#Villanova (CN8)16	L	A	10,817
Nov. 23	44	#Delaware State (ESPN)7	W	H	19,765
(NCAA I-AA Opening Round)						
Dec. 1	39	#Northern Iowa (ESPN GamePlan)27	W	A	15,803
(NCAA I-AA Quarterfinals)						
Dec. 8	20	*Southern Illinois (ESPN)17	W	A	11,503
(NCAA I-AA Semifinals)						
Dec. 14	21	#Appalachian State (ESPN2)49	L	N	23,010
(NCAA I-AA Championship, Chattanooga, TN)						

Lambert Cup • ECAC Team of the Year

2008
(4-8, 2-6 *Colonial Athletic Association, 5th-South)
Head Coach: K.C. Keeler
Captain: Kheon Hendricks, Erik Johnson, Matt Marcorelle, Kervin Michaud

Aug. 30	7	#Maryland (ESPN)14	L	A	49,119
Sep. 13	48	West Chester (N)20	W	H	22,029
Sep. 20	21	Furman23	L	A	12,781
Sep. 27	38	Albany (N)7	W	H	21,196
Oct. 4	7	#Massachusetts (CN8)17	L	A	16,422
Oct. 11	10	#Maine (N)27	L	H	21,302
Oct. 18	3	*William & Mary27	L	H	21,949
Oct. 25	17	*Hofstra0	W	A	3,518
Nov. 1	7	#James Madison (CN8)41	L	A	16,810
Nov. 8	31	*Towson21	W	H	20,720
Nov. 15	14	#Richmond (CN8)31	L	A	6,173
Nov. 22	7	#Villanova (CN8)21	L	H	21,457



The 2003 season was one of the best ever in Delaware football history as the Blue Hens, led by second-year head coach K.C. Keeler, posted a 15-1 record and captured the sixth national championship in school history with a 40-0 win over Colgate in the NCAA I-AA title game in Chattanooga, Tenn.

UD IN THE NATIONAL/EASTERN POLLS

The following is a list of UD's national & regional weekly rankings dating back to 1978. TSN is the The Sports Network Poll, which began in 1986. NCAA was the selection committee's poll, which stopped in 1992. ESPN is the ESPN/USA Today Coaches' Poll, which began in 1997. LC is the Lambert Cup Poll, which ranks the Top 10 teams in the East. Only weeks in which UD received votes in at least one poll are listed (except for final).

As a Division I-AA school

Top 25 Rankings

Year	TSN	FCS
Pre-Season	9	8
9/1	6	7
9/8	6	6
9/15	6	6
9/22	17	12
9/29	16	14
10/6	24	20
10/13	RV	RV
10/20	NR	NR
10/27	NR	RV
11/3	NR	NR
11/10	NR	NR
11/17	NR	NR
11/24	NR	NR
FINAL	NR	NR

Year	TSN	CSM	FCS
Pre-Season	19	24	21
9/3	13	13	13
9/10	10	11	11
9/17	11	11	11
9/24	12	12	12
10/1	11	11	11
10/8	15	15	15
10/15	14	14	13
10/22	9	8	8
10/29	7	8	7
11/5	6	6	6
11/12	9	9	9
11/19	13	13	13
FINAL	2	2	2

Notes: Delaware finished 1st in the final Lambert Cup Poll

Year	TSN	I-AA	LC
Pre-Season	16	NP	NP
9/4	15	15	NP
9/11	11	11	NP
9/18	18	20	NP
9/25	17	16	NP
10/2	18	19	NP
10/9	RV	RV	NP
10/16	RV	RV	NR
10/23	25	25	10
10/30	RV	NR	10
11/6	NR	NR	NR
11/13	NR	NR	NR
11/20	NR	NR	NR
FINAL	NR	NR	NR

Year	TSN	ESPN	LC
Pre-Season	10	10	NP
9/5	10	10	NP
9/12	6	6	NP
9/19	6	6	NP
9/26	5	5	NP
10/3	13	13	NP
10/10	22	24	NP

Year	TSN	ESPN	LC
10/17	RV	RV	NR
10/24	RV	RV	NR
10/31	RV	RV	NR
11/21	RV	RV	NR
FINAL	RV	RV	NR
Pre-Season	1	1	NP
9/6	7	NP	NP
9/13	6	5	NP
9/20	4	5	NP
9/27	4	5	NP
10/4	4	4	2
10/11	3	3	2
10/18	3	3	1
10/25	3	3	1
11/1	6	6	1
11/8	11	11	1
11/15	11	10	5
11/22	10	10	5
FINAL	7	8	5

Year	TSN	ESPN	LC
Pre-Season	17	18	NP
9/1	14	NP	NP
9/8	11	9	NP
9/15	8	8	NP
9/22	7	6	NP
9/29	4	4	NP
10/6	4	4	NP
10/13	4	4	2
10/20	3	3	2
10/27	2	2	1
11/3	2	2	1
11/10	6	6	3
11/17	4	3	1
11/24	4	3	1
FINAL	1	1	1

NCAA I-AA National Champions

Year	TSN	ESPN	LC
Pre-Season	22	21	NP
9/2	9	NP	NP
9/9	15	18	NP
9/16	RV	24	NP
9/23	RV	RV	NP
9/30	RV	RV	NP
10/7	RV	RV	NP
10/14	RV	RV	NP
10/21	RV	NR	NP
10/28	RV	RV	RV
11/4	RV	RV	RV
11/11	RV	RV	RV
11/18	RV	RV	RV
11/25	NR	RV	RV
FINAL	NR	NR	NR

Year	TSN	ESPN	LC
PS	4	7	NP
9/3	15	NP	NP
9/10	23	22	NP
9/17	No polls	9/11	
9/24	24	25	9
10/1	RV	NR	NR
10/8	NR	RV	NR
FINAL	NR	NR	NR

Year	TSN	ESPN	LC
Pre-Season	16	13	NP
9/4	13	NP	NP
9/11	11	11	NP
9/18	7	7	NP
9/25	8	6	1
10/2	7	5	1
10/9	4	3	1
10/16	4	4	1
10/23	2	2	1
10/30	2	2	1
11/6	4	6	2
11/13	2	2	2
11/20	2	2	1
11/27	2	2	2
FINAL	3	3	1

Year	TSN	ESPN	LC
1999 PS	11	10	***
9/6	8	RV	***
9/13	9	9	***
9/20	7	9	***
9/27	14	14	***
10/4	12	11	***
10/11	12	10	***
10/18	18	18	***
10/25	RV	25	***
11/1	24	25	***
11/8	24	25	***
11/15	22	22	***
11/22	RV	RV	***
FINAL	RV	RV	9

Year	TSN	ESPN	LC
1998 PS	3	4	NP
9/7	4	4	NP
9/14	9	11	NP
9/21	9	10	3
9/28	8	8	2
10/5	6	4	1
10/12	10	11	3
10/19	9	9	3
10/26	8	9	2
11/2	15	18	6
11/9	11	12	3
11/16	23	25	6
11/23	22	24	5
FINAL	23	24	6

Year	TSN	ESPN	LC
1997 PS	8	11	NP
9/2	6	NP	NP
9/9	4	8	NP
9/16	11	13	NP
9/23	10	13	5
9/30	11	13	5
10/6	6	9	3
10/13	6	7	2
10/20	4	6	2
10/27	3	3	2
11/3	3	3	2
11/10	3	3	2
11/17	3	3	2
11/24	NP	3	2
FINAL	3	3	1

Year	TSN	LC
1996 PS	6	NP
9/2	5	NP
9/9	4	NP
9/16	11	NP
9/23	11	NP
9/30	11	4
10/7	11	3
10/14	10	T-2
10/21	7	2
10/28	6	1
11/4	12	3
11/11	13	3
11/18	10	3
11/25	11	2
FINAL	10	2

Year	TSN	LC
1995 PS	11	NP
9/4	12	NP
9/11	11	NP
9/18	11	NP
9/25	10	NP
10/2	9	1
10/9	8	1
10/16	7	1
10/23	5	1
10/30	4	1
11/6	4	1
11/13	8	1
11/20	7	1
11/27	NP	1
FINAL	6	1

Year	TSN	LC
1994 PS	11	NP
9/5	12	NP
9/12	24	NP
9/19	20	NP
9/26	18	5
10/3	NR	RV
10/17	NR	T-10
10/24	NR	9
10/31	NR	8
11/7	NR	7
11/14	NR	13
11/21	NR	7
FINAL	NR	7

Year	TSN	LC
1993 PS	5	NP
9/6	3	NP
9/13	3	NP
9/20	3	1
9/27	3	1
10/4	2	1
10/11	7	2
10/18	7	2
10/25	15	7
11/1	14	6
11/8	22	7
11/15	19	5
11/22	18	5
11/29	NP	2
FINAL	18	2

Year	NCAA	TSN	LC
1992 9/7	T-7	9	NP
8/14	8	6	2
9/21	7	8	2
9/28	12	14	6
10/5	12	13	5
10/12	12	13	4
10/19	7	9	1
10/26	7	8	1
11/2	6	5	1
11/9	3	2	1
11/16	10	7	3
FINAL	8	7	2

Year	NCAA	TSN	LC
1991 PS	NR	RV	NP
9/9	12	18	NP
9/16	8	10	NP
9/23	6	6	1
9/30	5	5	1
10/7	16	16	5
10/14	14	14	5
10/21	11	6	3
10/28	9	5	1
11/4	8	5	2
11/11	6	5	2
11/18	6	5	1
FINAL	6	5	1

Year	NCAA	TSN	LC
1990 PS	RV	RV	NP
9/3	NR	RV	NP
9/10	NR	17	NP
9/17	NR	RV	NP
9/24	NR	RV	8
10/1	***	***	3
10/8	NR	RV	8
10/15	NR	RV	6
10/22	NR	RV	6
10/29	NR	RV	RV
11/5	NR	RV	T-9
11/12	NR	RV	6
FINAL	NR	NR	9

Year	TSN	RV	RV
10/16	NR	RV	RV
10/23	NR	RV	RV
10/30	NR	RV	9
11/6	NR	RV	10
11/13	NR	NR	9
FINAL	NR	NR	9

Year	NCAA	TSN	LC
1988 10/3	19	***	10
10/10	14	25	7
10/17	14	17	4
10/24	12	***	T-3
10/31	9	9	T-2
11/7	13	18	5
11/14	NR	***	8
11/21	15	***	6
FINAL	15	***	6

Year	NCAA	TSN	LC
1987 PS	8	11	NP
9/14	NR	RV	NP
9/21	NR	RV	NP
10/19	NR	NR	RV
10/26	NR	NR	9
FINAL	NR	NR	NR

Year	NCAA	LC
1986 PS	6	***
9/22	19	16
9/29	***	17
10/6	15	17
10/13	14	12
10/20	16	T-17
10/27	15	17
11/3	14	14
11/10	12	11
11/17	11	9
FINAL	13	14

Year	NCAA	LC
1985 9/30	NR	RV
10/7	NR	T-9
10/14	NR	7
10/21	NR	5
10/28	NR	8
11/5	NR	4
11/12	RV	4
11/19	RV	7
FINAL	NR	6

Year	NCAA	LC
1980 10/4	***	3
10/11	***	***
10/18	***	T-5
10/25	***	4
11/2	***	3
11/9	***	2
11/16	***	2
FINAL	***	2

Year	NCAA	TSN	LC
1987 PS	8	11	NP
9/14	NR	RV	NP
9/21	NR	RV	NP
10/19	NR	NR	RV
10/			