

RAYMOND FIELD AT DELAWARE STADIUM

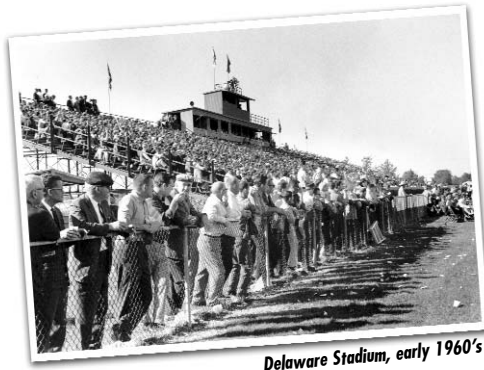
Delaware Stadium, one of the finest football facilities in the country at the NCAA Division I Football Championship Subdivision level and home of the 2003 National Champion Blue Hen football team, begins its 58th season of action in 2009.

Erected in 1952 and enlarged prior to the 1964, 1970, 1972 and the 1975 seasons, the 22,000-seat stadium is the largest in the Colonial Athletic Association and one of the largest in the nation in FCS football.

Delaware Stadium also underwent extensive renovations in 1992-1993. The stadium's grass surface received a new drainage/irrigation system and new bleachers were installed in the East and West grandstands and the North End Zone. The grass surface was replaced in the spring of 2007.

Another major renovation took place when the playing surface and drainage system was reconstructed in the winter of 2006 at a cost of \$900,000. The problem forced Delaware to move its Oct. 15, 2005 home game to Richmond (Va.) due to unplayable conditions. The field held up well in its first test June 24, 2006 when UD hosted the Blue-Gold High School All-Star Game in rainy conditions.

Delaware celebrated the 50th anniversary of the facility in 2002, producing a poster and recognizing players from the first Blue Hen teams (1952-55) to play in Delaware



Delaware Stadium, early 1960's

Stadium as part of an Oct. 5 ceremony.

Another highlight of the 2002 campaign came in the season-opening win over Georgia Southern Aug. 29 when the Delaware Stadium playing surface was dedicated as Tubby Raymond Field, recognizing Delaware's College Football Hall of Fame head coach who retired following the 2001 season after compiling 300 victories in 36 seasons. Raymond was on hand to pass the football off to new head coach K.C. Keeler prior to the game. Most of the team captains from Raymond's 36 teams were also in attendance to celebrate the evening.

The 22,000-seat stadium received a new look prior to the 2000 season as eight poles of permanent broadcast-quality lights were installed by Musco Lighting. In addition, the South End Zone bleachers were also replaced.

As part of the new bleachers, the Blue Hen football team now enters Delaware Stadium from a brick runway underneath the stands directly behind the goalposts on gameday. The team's smoke-filled exit from the tunnel on to Raymond Field through a gauntlet of Blue Hen Marching Band members lining the field is one of the highlights of football Saturdays at Delaware Stadium.

A plaque which lists the accomplishments of past Blue Hen football teams along with a football hangs from the runway. A new tradition was started in 2000 as Delaware players jump up to touch the plaque before entering the field.

The largest Delaware Stadium crowd was the 23,619 spectators that watched the Blue Hens host Temple, Oct. 27, 1973. Temple won that game 31-8.

Since the stadium opened, Delaware has drawn 22,000 or more fans 53 times, including a season-high 22,075 fans Sept. 9, 2000 vs. The Citadel in the first night game under the new lights.

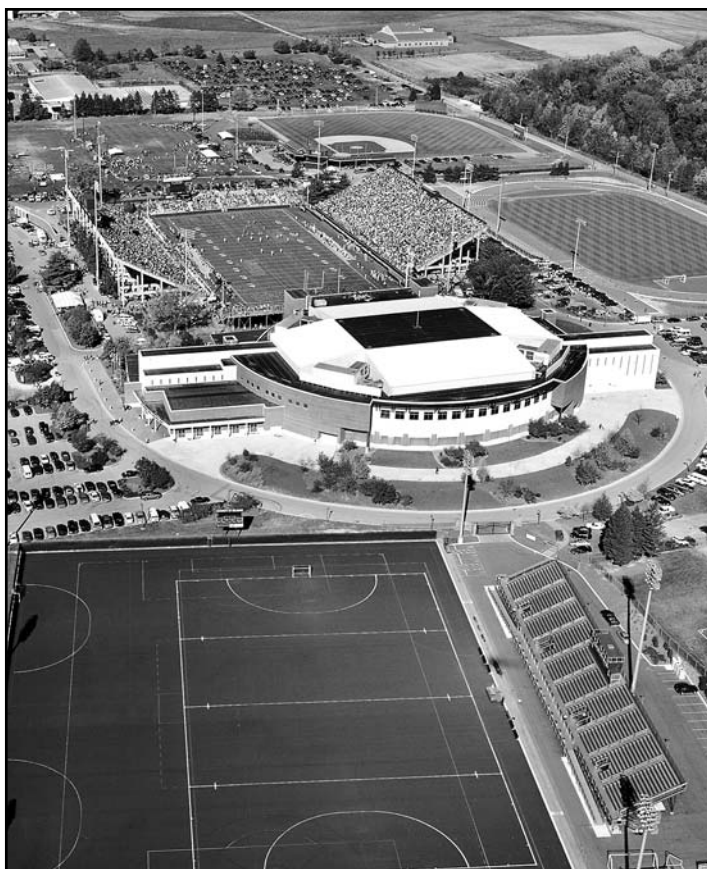
Delaware Stadium attendance records have consistently been broken over the last several years as the Blue Hens drew an average of 22,280 fans during the 2004 regular season, breaking the previous mark of 21,163 set in 2003. Delaware's home attendance average of 21,609 during the 2008 season ranked third among all NCAA FCS institutions.

Delaware is the only school at the NCAA FCS level to average over 20,000 fans for regular season games each of the last 10 seasons, posting marks of 21,609 in 2008, 21,510 in 2007, 21,825 in 2006, 22,176 in 2005, 22,280 in 2004, 21,163 in 2003, 20,257 in 2002, 20,504 in 2001, 21,154 in 2000, and 20,372 in 1999. Entering the 2009 season, Delaware Stadium has drawn at least 20,000 fans in 39 straight regular season games and 19,000 or more in 44 straight.

Delaware Stadium opened November 15, 1952, with the Blue Hens edging past Lafayette, 13-12, on two touchdowns by halfback Kenny Reith on a cold and rainy afternoon.

Entering the 2009 season, the Blue Hens have played 354 games in Delaware Stadium — posting a record of 266-84-4, a winning percentage of .753 over 57 seasons.

The Blue Hens are 17-5 in 22 NCAA playoff games played at Delaware Stadium, including a 2-1 mark during the 1997 and 2000 seasons and a perfect 3-0 mark in 2003 when the Hens easily downed



Eric Crossin

Tubby Raymond Field at Delaware Stadium (middle), which celebrated its 50th anniversary in 2002, sits in the heart of the David M. Nelson Athletic Complex. At top right is the Bob Hannah Stadium for baseball, at middle right is Delaware Mini Stadium (soccer and track), Fred P. Rullo Stadium (lacrosse and field hockey) is at bottom next to the Bob Carpenter Center. Delaware Stadium has been the home of the Delaware football program since 1952. The Hens average nearly 22,000 fans for each regular season home football game and are the only school in NCAA I-AA to average over 20,000 fans each of the last 10 seasons.

Southern Illinois, Northern Iowa, and Wofford on the way to the national championship game. In 2004 Delaware defeated Lafayette, 28-14, in the first round of the NCAA I-AA playoffs, while in 2007 the Blue Hens defeated Delaware State, 44-7, in the first ever matchup between the state's two FCS teams.

The stadium is at the center of the David M. Nelson Athletic Complex that includes the \$20.5 million Bob Carpenter Center, a 5,000-seat multi-purpose facility south of the stadium that opened in August, 1992, and the \$3.3 million Fred P. Rullo Jr. Stadium, a 2,000-seat lighted ActionTurf field which opened in September, 1998.

Field hockey, men's lacrosse, and women's lacrosse play their home games at Rullo Stadium, which played host to the United States Intercollegiate Lacrosse Association North-South Senior Men's Lacrosse All-Star Game in June, 2000 as well as the U.S. Men's Lacrosse Team tryouts in 2001. In addition, local high schools play field hockey and lacrosse games at Rullo Stadium as do several area colleges.

The Carpenter facility, named in honor of UD's longtime trustee and supporter, houses the Blue Hen football and basketball programs as well as offices, the Chuck Hall Memorial Weight Room, athletic training facilities for the football program, and a VIP center with a view to Delaware Stadium.

The Nelson athletic complex is named in honor of David M. Nelson, Delaware's longtime football coach, athletic director, and dean who passed away in 1992.

The BCC served as home to the NBA Philadelphia 76ers basketball club pre-season training camp in the fall of 1995 and 1996.

The University of Delaware athletic complex also includes 360-by-180-foot Delaware Field House, eight athletic fields - including 2,000-seat Bob Hannah Stadium, the Delaware Softball Field, the \$4.5 million Ice Skating Science Development Center featuring two full-sized ice rinks, and an outdoor swimming pool.

The Delaware Mini-Stadium, located just east of Delaware Stadium, includes a grass field for soccer and a quarter-mile all-weather track. The new track was installed in 2000 along with permanent lights.

RAYMOND FIELD AT DELAWARE STADIUM

Two lighted football practice fields as well as the Delaware Field House Tennis Courts are part of the complex. New lights were installed on the practice field prior to the 2001 season.

Delaware Stadium's outstanding facilities earned its selection as the host site for the 1984 and 1986 Division I NCAA Men's Lacrosse Championship games and for two NCAA Men's Lacrosse Tournament first round games in May, 2002.

Other events held in the stadium include the annual Blue-Gold Delaware High School Football All-Star game and University of Delaware graduation ceremonies. Delaware Stadium has been the site of the Blue-Gold All-Star game every year since the game was instituted in the 1950's.

The last 15 Delaware Blue-Gold High School All-Star games, held annually in late June and featuring the top players in the state, have been played at night.

Delaware Stadium hosted its first collegiate night game (using portable lights) Aug. 31, 1991 when the Hens defeated rival West Chester 28-0 in the Texaco Star Classic. Delaware has hosted 19 night games all-time, posting an impressive record of 16-3.

Delaware Stadium will host two night games in 2009, including the season opener September 4 vs. West Chester.



Kevin Tucker and Keith W. Hecker

DELAWARE STADIUM ATTENDANCE RECORDS

1. Temple.....	Oct. 27, 1973	23,619
2. Navy.....	Sept. 9, 1985	23,110
3. Navy.....	Nov. 14, 1987	23,100
4. William & Mary.....	Oct. 18, 1986	23,045
5. Colgate.....	Nov. 19, 1977	23,019
6. Connecticut.....	Nov. 7, 1992	22,911
7. Maine.....	Oct. 28, 1989	22,805
8. Lehigh.....	Oct. 3, 1981	22,784
9. Towson.....	Sept. 11, 2004	22,782
10. New Hampshire.....	Sept. 2, 2004	22,727
11. Villanova.....	Nov. 1, 1980	22,680
12. Bucknell.....	Nov. 18, 1972	22,648
13. Maine.....	Nov. 2, 1991	22,601
14. Temple.....	Oct. 30, 1971	22,582
15. Northern Michigan.....	Oct. 18, 1980	22,555
16. Lehigh.....	Sept. 10, 2005	22,537
17. West Chester.....	Sept. 8, 2007	22,495
18. Temple.....	Sept. 19, 1981	22,379
19. West Chester.....	Sept. 17, 2005	22,331
20. West Chester.....	Sept. 9, 2006	22,329
21. New Hampshire.....	Oct. 5, 1991	22,304
22. Massachusetts.....	Oct. 22, 1988	22,301
23. Maine.....	Oct. 28, 1995	22,293
24. James Madison.....	Oct. 26, 1996	22,291
25. West Chester.....	Sept. 20, 1986	22,221

DELAWARE STADIUM ALL-TIME RECORDS

Rushing

Longest Rushing Play	97 yards
Pat Williams (Delaware) vs. West Chester, 9-9-95	
Most Attempts	44
Marcel Shipp (Massachusetts), 10-23-99	
Most Net Yards	272
Daryl Brown (Delaware) vs. Northeastern, 10-29-94	

Passing

Longest Pass Play	95 yards
Darryl Coulter-Mike Holston (Morgan State), 9-27-80	
Most Completed Passes	39
Brett Gordon (Villanova), 11-23-02	
Most Passes Attempted	65
Ryan Day (New Hampshire), 11-4-00	
Most Yards Gained Passing	482
John Marzo (Colgate), 11-18-79	
Most Passes Intercepted	5
Greg Farland (Rhode Island), 9-7-85	

Receiving

Most Receptions	14
Wayne Chrebet (Hofstra), 11-12-94	
Most Yards Gained Receiving	295
Wayne Chrebet (Hofstra), 11-12-94	

Field Goals

Longest	53 yards
Steve Leo (UD) vs. Richmond, 11-16-91	
Most Field Goals	3
11 times - last, Zach Hobby (Delaware) vs. West Chester, 9/9/06	

Punting

Longest	82 yards
Bill Laughlin (UD) vs. Bucknell, 11-19-66;	
Tim Healy (UD) vs. Boston University, 11-21-87	
Most Punts	16
John Borresen (UD) vs. Bucknell, 11-22-52	

Returns

Longest Punt Return	85 yards
Eddie Conti vs. Northeastern, 10-3-98	
Longest Kickoff Return	100 yards
Maurice Burton (Morgan State), 9-24-77	
Longest Interception Return	100 yards
Paul Williams (UD) vs. Hofstra, 11-25-95;	
Ricardo Walker (UD) vs. Villanova, 11-18-00	
Most Interceptions	3
8 times - last, Allante Harrison (Towson) vs. Delaware, 9-11-04	

Touchdowns

Most Touchdowns	5
Wayne Chrebet (Hofstra), 11-12-94	

Team Records

Most Points	84, Delaware over West Chester, 84-0, 9-23-00
Most Points by an Opponent	62, Richmond over Delaware, 62-56 (5 OT)
Most First Downs	42, Delaware vs. Baldwin-Wallace, 10-6-73
Most Yards Rushing	520, Delaware vs. Lehigh, 11-6-91
Most Yards Passing	482, Colgate vs. Delaware, 11-18-79
Most Total Yards	714, Delaware vs. Maine, 10-28-95
Fumbles Lost	8, West Chester vs. Delaware, 11-15-75
Delaware in Overtime Games	4-4
.....	(last overtime game, UD def. Lehigh, 34-33 in OT 9/10/05)

RAYMOND FIELD AT DELAWARE STADIUM

DELAWARE SEASON ATTENDANCE TOTALS (1964-2008)

Year	Total Home Att.	Regular Season Avg.	NCAA FCS Rank*	All Home Avg. (incl. playoff)	Total Away Att.	Total Attendance
2008	129,653	21,609	3rd	21,609	104,823	234,476 (12 games)
2007	150,573	21,801	3rd	18,429	102,946	276,529 (15 games)
2006	152,773	21,825	2nd	21,825	28,046	180,819 (11 games)
2005	133,060	21,176	2nd	21,176	36,273	169,333 (11 games)
2004	147,385	22,280	5th	21,055	79,350	226,735 (13 games)
2003	188,947	21,163	*5th	18,895	59,476	248,423 (16 games)
2002	121,145	20,257	2nd	20,257	54,287	175,832 (12 games)
2001	102,518	20,504	4th	20,504	46,907	149,425 (10 games)
2000	171,291	21,154	4th	19,032	39,918	211,209 (14 games)
1999	122,229	20,372	7th	20,372	43,084	134,779 (11 games)
1998	114,942	19,157	7th	19,157	57,711	172,653 (11 games)
1997	126,329	17,317	6th	15,791	35,027	161,356 (14 games)
1996	98,502	16,417	10th	16,417	83,440	101,084 (12 games)
1995	121,310	18,003	12th	17,330	77,595	198,905 (13 games)
1994	95,804	15,967	16th	15,967	45,208	141,112 (11 games)
1993	114,526	16,361	18th	16,361	55,421	169,947 (13 games)
1992	118,454	16,922	12th	14,807	100,542	218,996 (14 games)
1991	113,904	19,800	9th	18,984	70,730	184,634 (12 games)
1990	104,702	17,450	12th	17,450	54,890	159,592 (11 games)
1989	115,879	19,313	6th	19,313	38,191	154,070 (11 games)
1988	105,235	17,539	9th	17,539	73,578	178,813 (12 games)
1987	116,690	19,448	7th	19,448	43,565	160,255 (11 games)
1986	125,455	18,906	6th	17,922	73,041	198,496 (13 games)
1985	134,511	19,215	9th	19,215	44,372	178,883 (11 games)
1984	127,842	15,980	14th	15,980	25,829	153,671 (11 games)
1983	138,803	17,350	11th	17,350	27,947	166,750 (11 games)
1982	136,456	17,857	-	17,057	72,331	208,787 (14 games)
1981	138,034	19,719	-	19,719	46,411	184,445 (12 games)
1980	137,394	19,628	-	19,628	59,513	196,907 (11 games)
1979	165,654	19,664	-	18,406	44,083	209,737 (14 games)
1978	155,265	19,009	-	17,251	62,900	218,165 (14 games)
1977	133,228	19,032	-	19,032	32,300	165,528 (10 games)
1976	134,339	17,392	-	16,792	62,877	197,216 (12 games)
1975	151,697	18,939	-	18,939	27,912	179,608 (11 games)
1974	149,363	19,112	-	18,670	96,813	246,176 (14 games)
1973	114,222	19,037	-	19,037	73,053	187,275 (12 games)
1972	113,283	18,881	-	18,881	44,106	134,492 (10 games)
1971	113,828	18,971	-	18,971	43,372	157,200 (11 games)
1970	98,625	16,438	-	16,438	58,479	157,104 (11 games)
1969	82,983	13,830	-	13,830	38,031	121,014 (11 games)
1968	54,052	10,810	-	10,810	64,910	118,962 (11 games)
1967	49,372	9,874	-	9,874	-	-
1966	43,395	10,848	-	10,848	-	-
1965	41,866	10,466	-	10,466	-	-
1964	43,490	8,698	-	8,698	-	-

*Beginning in 2003, NCAA attendance rank included home playoff games.

DELAWARE HOMECOMING

Delaware will celebrate Homecoming 2009 on October 31 against James Madison. Delaware is 40-14 on Homecoming since the opening of Delaware Stadium, including a 29-3 mark vs. Yankee Conference/Atlantic 10/CAA schools. Below are recent Homecoming results:

2008	William & Mary	L 3-27
2007	Northeastern	W 30-20
2006	Hofstra	W 10-6
2005	Hofstra	L 6-10
2004	Maine	W 43-38
2003	Rhode Island	W 55-10
2002	James Madison	W 23-10
2001	Hofstra	L 14-39
2000	James Madison	W 33-14
1999	Lehigh	L 35-42
1998	Northeastern	W 27-20
1997	William & Mary	W 14-0
1996	Northeastern	W 24-14
1995	Richmond	W 15-0
1994	Massachusetts	W 52-14
1993	Maine	W 21-19
1992	Boston University	W 49-14
1991	New Hampshire	L 28-45
1990	William & Mary	L 12-22
1989	Maine	W 35-28
1988	William & Mary	W 38-35
1987	Massachusetts	W 37-34
1986	William & Mary	L 18-24
1985	Boston University	W 21-0
1984	Maine	W 37-7
1983	Massachusetts	W 16-13
1982	Towson State	W 51-7
1981	Rhode Island	W 35-15
1980	Northern Michigan	L 7-22
1979	C.W. Post	W 47-19
1978	Maine	W 48-0
1977	Connecticut	W 28-0
1976	VMI	L 6-10
1975	Lehigh	L 23-35
1974	New Hampshire	W 34-10
1973	Connecticut	W 35-7
1972	Lafayette	W 27-0
1971	Temple	L 27-32
1970	Lafayette	W 36-20
1969	Temple	W 33-0
1968	Massachusetts	W 28-23
1967	Temple	L 17-26
1966	Lehigh	W 41-0
1965	Gettysburg	W 15-0
1964	Lafayette	W 28-0
1963	Gettysburg	W 64-18
1962	Connecticut	W 34-0
1961	Ohio University	L 16-17
1960	Lafayette	L 0-3
1959	New Hampshire	W 50-12
1958	Connecticut	W 28-0
1957	New Hampshire	W 59-6
1956	Bucknell	W 26-17
1955	New Hampshire	W 20-18

YEAR BY YEAR RECORD AT DELAWARE STADIUM

Year	Home Record	Year	Home Record	Year	Home Record	Year	Home Record
1952	1-0	1967	1-4	1981	5-2	1995	7-0
1953	4-1	1968	5-0	1982	8-0	1996	6-0
1954	5-0	1969	5-1	1983	2-6	1997	6-2
1955	4-1	1970	5-1	1984	7-1	1998	5-1
1956	3-2-1	1971	5-1	1985	5-2	1999	4-2
1957	2-2	1972	6-0	1986	4-3	2000	7-2
1958	3-2	1973	5-1	1987	3-3	2001	2-3
1959	4-0	1974	8-0	1988	3-3	2002	5-1
1960	1-4	1975	5-3	1989	4-2	2003	10-0
1961	3-1	1976	5-2-1	1990	4-2	2004	6-1
1962	4-1	1977	5-1-1	1991	4-2	2005	4-2
1963	4-0	1978	9-0	1992	6-2	2006	3-4
1964	3-2	1979	8-1	1993	6-1	2007	6-1
1965	3-1	1980	6-1	1994	4-1-1	2008	3-3
1966	4-0					Totals	266-84-4