



2005-2006 UNIVERSITY OF DELAWARE WOMEN'S BASKETBALL

Game Notes ♦ Game 16

Delaware (13-2, 5-1 CAA) vs. William & Mary (7-8, 3-3 CAA)
Sunday, January 22, 2006 ♦ 1:00 p.m.
Kaplan Arena (8,600) ♦ Williamsburg, VA

DELAWARE VS. WILLIAM & MARY

All-Time Series Record: This afternoon's matchup will mark the 11th meeting between the Tribe and Delaware with the Blue Hens holding an 8-2 all-time advantage. Delaware, which has won two straight games against William & Mary, is 4-1 at Kaplan Arena.

Last Meeting: The Blue Hens defeated the Tribe, 68-53, on February 17, 2005 at Kaplan Arena in Williamsburg, VA. Delaware's Tiara Malcom led all scorers with 19 points.

Last time out for the Fightin' Blue Hens: Tyresa Smith came up with a big steal with 29 seconds left and hit the game-winning shot on a put back with one second remaining to lift Delaware to a thrilling 57-55 Colonial Athletic Association victory over Drexel Friday night at the Bob Carpenter Center.

Last time out for the Tribe: William and Mary to defeated Virginia Commonwealth, 55-52, in CAA action Friday night at Kaplan Arena. Kyra Kaylor led the Tribe with 20 points.

Delaware Probable Starters

No.	Name	Pos	Yr	PPG	RPG
12	Alena Koshansky	G	Jr.	8.7	3.4
	Career-high 24 points at George Mason (12/4/05)				
23	Tyresa Smith	G	Jr.	13.9	5.7
	Career-high 24 points at Boston University (11/27/05)				
21	Melissa Czorniewy	G	So.	13.5	4.1
	Career-high 28 points at Northeastern (1/15/06)				
32	Amanda Blackstone	F	Sr.	4.3	3.5
	Season-high 10 points at Northeastern (1/15/06)				
40	Arek Deng	C	Sr.-r.	4.3	4.9
	Career-high 10 points against James Madison (1/8/06)				

Off the Bench

No.	Name	Pos	Yr	PPG	RPG
22	Karleena Tobin	G	Sr.	3.8	0.7
	Career-high 12 points against Massachusetts (11/18/05)				
30	Courtney Irving	F	So	5.5	4.3
	Career-high 13 points at Saint Joseph's (12/29/05)				
24	Ethlynn Thomas	G	Fr.	1.0	1.3
	Scored four points in each of the first two games				
3	Geneva Livingston	G	Sr.	5.0	1.0
42	Farrak Ferguson	C	Fr.	---	---
13	Chrissy Fisher	F	Jr.	12.0	6.3
	Will be out 1-2 weeks with an ankle injury				

2005-06 SCHEDULE

Date	Opponent	Time
Nov. 18	Massachusetts	W 71-44
Nov. 20	at American	W 64-38
Nov. 23	La Salle	W 70-60
Nov. 27	at Boston University	L 59-61
Nov. 30	Pennsylvania	W 78-34
Dec. 4	at *George Mason	W 74-63
Dec. 7	at Fordham	W 60-56
Dec. 20	Georgetown	W 65-43
Dec. 28	^vs. Bowling Green	W 48-44
Dec. 29	^at Saint Joseph's	W 49-48
Jan. 6	at *UNC Wilmington	L 41-55
Jan. 8	*James Madison	W 70-62
Jan. 13	at *Towson	W 67-56
Jan. 15	at *Northeastern (CAATV)	W 78-56
Jan. 20	*Drexel	W 57-55
Jan. 22	at *William & Mary	1 p.m.
Jan. 27	*George Mason	7 p.m.
Jan. 29	*VCU	1 p.m.
Feb. 3	at *Georgia State	6 p.m.
Feb. 5	at *James Madison	2 p.m.
Feb. 10	*UNC Wilmington	7 p.m.
Feb. 12	at *Hofstra	2 p.m.
Feb. 17	*Towson	7 p.m.
Feb. 19	*Old Dominion	1 p.m.
Feb. 24	at *Drexel	7 p.m.
Feb. 26	*Northeastern	1 p.m.
Mar. 2	*Hofstra	7 p.m.
Mar. 8-11	#Colonial Athletic Association Championship	T.B.A.

^ Saint Joseph's Hawk Classic

* Colonial Athletic Association Games

Colonial Athletic Association Championship at

MEDIA CONTACTS

Sports Information Director: Scott Selheimer -Office
Phone: 302-831-2186; Email: selheime@udel.edu

Women's Basketball Contact: Marci Lippert -Office Phone :
302-831-2186; Office Fax: 302-831-8653; Cell Phone : 610-301-1154; Email: lippert@udel.edu

The last time...**UD played overtime...**

3/12/05, Old Dominion (L 74-78)

UD played double-overtime...

1/20/1997 at Drexel (L 69-73)

UD scored 100 points...

2/27/1981, Temple (101-96 OT)

UD allowed 100 points...

2/13/1997, Maine (54-102)

UD was held under 40 points...

2/20/2003 at GMU (L 36-47)

UD held opponent under 40 points...

11/30/2005, Penn (W 78-34)

UD made five 3-pt FGs...

9-11 at George Mason, 12/5/05

An opponent made five 3-pt FGs...

9-27, Drexel, 1/20/06

A Blue Hen scored 20 points...

Melissa Czorniewy (28) at Northeastern, 1/15/06

An opponent scored 20 points...

Catherine Scanlon (21), Drexel, 1/20/06

A Blue Hen scored 25 points...

Melissa Czorniewy (28) at Northeastern, 1/15/06

An opponent scored 25 points...

Sharese Grant (35), Old Dominion, 3/12/05

A Blue Hen scored 30 points...

Tiara Malcom (30) Hofstra, 2/27/05

An opponent scored 30 points...

Sharese Grant (35), Old Dominion, 3/12/05

A Blue Hen grabbed 10 rebounds...

Tyresa Smith (14), James Madison, 1/8/06

An opponent grabbed 10 rebounds...

Meredith Alexis (12), James Madison, 1/8/06

A Blue Hen grabbed 15 rebounds...

Tiara Malcom (16) at JMU, 1/30/03

An opponent grabbed 15 rebounds...

Tamera Young (15), JMU, 1/30/05

A Blue Hen had 10 assists...

Christine Koren (10) at Lafayette, 11/19/99

An opponent had 10 assists...

Mary Lisicky (10), Georgetown, 9/27/04

A Blue Hen had 5 blocks...

Tiara Malcom (5), vs. Towson, 1/29/04

An opponent had 5 blocks...

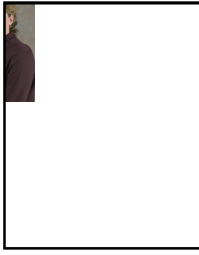
Denae Dobbins (6), JMU, 2/1/04

A Blue Hen had a "double-double"...

Tyresa Smith (20 pts, 14 rbs) vs. James Madison, 1/8/06

An opponent had a "double-double"...

Meredith Alexis (18 pts, 12 rbs), James Madison, 1/8/06

**Head Coach
Tina Martin**

Tenth season at University of Delaware...has compiled a 180-98 record at the helm of the Hens' basketball program, becoming

the fastest UD basketball coach (men's or women's) to reach 100 career wins...has led the Blue Hens to 20-win seasons in four of the last five years and four post-season appearances, including an NCAA bid in 2001...Martin began her coaching career at Lock Haven in 1986-87 when she served as a graduate assistant, and the next season moved on to Seton Hall...spent nine seasons at Seton Hall as an assistant coach in a program that made back-to-back NCAA tournament appearances in 1994 and 1995, advancing to the Sweet 16 in 1994...A native of Williamsport, PA, she was a two-time Division II All-American at Lock Haven University, a four-time Pennsylvania State Athletic Conference All-Star, and two-time league Player of the Year who finished her career as the PSAC's all-time leading scorer with 2,157 career points. Martin is 6-2 all-time against William & Mary in her time at Delaware.

Martin's Coaching Record**At Lock Haven (Graduate Assistant Coach)**

Year	Record	Highlights
1986-87	16-12	2nd, PSAC West

At Seton Hall (Assistant Coach)

Year	Record	Highlights
1987-88	10-19	Big East Tournament 2nd Round
1988-89	18-10	
1989-90	21-7	
1990-91	18-11	
1991-92	14-15	Big East Tournament 2nd Round
1992-93	14-13	
1993-94	27-5	2nd, Big East Tournament; NCAA Sweet 16
1994-95	24-9	2nd, Big East Tournament; NCAA Tournament 2nd Round
1995-96	16-13	Big East 7 Co-Champs

At Delaware (Head Coach)

Year	Record	Highlights
1996-97	9-19	America East Quarterfinals
1997-98	6-21	America East First Round
1998-99	16-11	America East Quarterfinals
1999-00	21-8	America East Semifinals; Best season at UD since 1989-90
2000-01	26-5	America East Regular Season Champs. (17-1); America East Tournament Champions; NCAA East Regional; America East Coach of the Year; 12 road wins (No. 2 in NCAA)
2001-02	23-7	CAA Semifinals; WNIT first round
2002-03	22-9	CAA Runners-up; tied for CAA regular season title; WNIT first round
2003-04	19-10	CAA Semifinals
2004-05	25-6	CAA Runners-up; won CAA regular season title; WNIT first round
2005-06	13-2	
Totals	180-98	Fastest UD basketball coach (men's or women's) to 100 career wins.

BLUE HENS ON THE AIR***The Tina Martin Show***

The Tina Martin Show airs each Monday from 6:30-7 p.m. on The Ticket 1290 AM and The River 94.7 FM (Real Audio links are available at www.udel.edu/sportsinfo/womens_basketball). Each Monday, the Tina Martin Show will be broadcast from Buffalo Wild Wings on Route 40 in Bear, DE. Coach Martin is joined by the voice of the Blue Hens, Mike Corey, for a review of the past week's game, a preview of upcoming action, and a series of questions from the restaurant audience and listeners via call-in.

Radio Coverage

For the second year, all the Blue Hen games will be broadcast on The Ticket 1290 AM. Handling the play-by-play will be John Sadak and color will be Thom Shumusic. For more detailed listings, see the Delaware Women's Basketball home page (www.udel.edu/sportsinfo/womens_basketball). In addition, many UD basketball games are also broadcast on the UD student station, WVUD-FM 91.3, and WVUD2, the station's internet radio network. Real Audio links for both broadcasts are available through UD's athletics website (The Ticket-AM 1290, WVUD FM 91.3).

PRONUNCIATION GUIDE

Don't worry, you're not the only one who can't say Amanda Blackstone's home town (Sku-neck-ta-dee) or her high school (MO-nass-hen). So, here are the rest of the "tough ones" of the 2005-06 Blue Hens, all sounded out.

#3 Geneva (Jeh-nee-vuh) Livingston
 #12 Alena (Uh - LAY - nuh) Koshansky (KUH - SHAN - ski)
 #21 Melissa Czorniewy (Zor-NEW-Y)
 #23 Tyresa (TIE - REE - suh) Smith
 #24 Ethlynn (Eth-LYN) Thomas
 #40 Arek (EH - REK) Deng
 Associate Head Coach Jeanine Radice (Ruh - DEESE)

92 ♦ 28 ♦ 51.7 ♦ 223 ♦ 4

Career Three pointers made by Alena Koshansky; Third most all time at Delaware

Career-high set by Melissa Czorniewy at Northeastern; Most points scored by a Blue Hen this season

Average points the Blue Hens are allowing this season; Tops the CAA; Third in the Nation

Career Steals by Tyresa Smith; Third on the All-Time List at Delaware

Wins in a row for the Blue Hens against the Colonial Athletic Association

Colonial Athletic Association

2005-06

CAA Women's Basketball Predicted Order Of Finish

1. Old Dominion
2. James Madison
3. Drexel
- 4. Delaware**
5. Hofstra
6. Towson
7. George Mason
8. Georgia State
9. Northeastern
10. Virginia Commonwealth
11. UNC Wilmington
12. William & Mary

2005-06

CAA Women's Basketball Preseason All-Conference Teams

First Team

Catherine Scanlon - Sr. / Drexel (CAA Preseason Player of the Year)
 Meredith Alexis - Jr. / James Madison
 Lawona Davis - Sr. / Old Dominion
 Lesley Dickinson - Jr. / James Madison
 Cigi McCollin - Jr. / Hofstra

Second Team

Vanessa Gidden - Jr. / Hofstra
 Tiffany Green - So. / Old Dominion
 Tierra Jackson - Sr. / Towson
 Lizanne Murphy - Jr. / Hofstra
 Maralene Zwarich - Sr. / Northeastern

The Blue Hens Under Tina Martin...

Home	95-19
Away	68-67
Neutral	18-10
vs. CAA at Home	31-7
vs. CAA on Road	30-13
vs. CAA Neutral	6-2
in Overtime	9-3
November	23-15
December	42-16
January	54-31
February	44-24
March	17-11
Sunday	48-19
Monday	12-3
Tuesday	8-9
Wednesday	15-6
Thursday	43-18
Friday	23-19
Saturday	29-23

We Will - We Will - Stop You

Delaware's defense has been impermeable this season. The Blue Hens are ranked first in the Colonial Athletic Association and third out of 332 teams ranked in NCAA Division I in scoring defense, allowing only 51.7 points per game. Delaware has held six of its opponents under 50 points this season, including holding American University to 38 points, the lowest since Loyola College scored 27 points on December 14, 2003.

Four in a Row

The Blue Hens are on a four game winning streak in the Colonial Athletic Association. They are now in second place with a 5-1 conference record.

Conference Contenders

Since joining the Colonial Athletic Association in the 2001-2002 season, Delaware holds a 61-17 all-time record in conference games, second best record by a CAA team in that span..

Rating Percentage Index (RPI)

According to rpiratings.com, the Blue Hens' Rating Percentage Index is currently 50 out of 332 teams. The RPI is used by the NCAA women's basketball committee to supplement the selection of at-large teams and the seeding of all teams for the NCAA basketball tournament. As a conference, the CAA is ranked eighth out of 32 conferences in NCAA Division I.

Stealing the Show

Delaware is ranked 26th out of 324 teams in NCAA Division I, averaging 11.5 steals per game. Leading the way for the Blue Hens in that category is **Tyresa Smith**, who is ranked 13th in NCAA Division I with 3.3 steals per game. She ranks first in the CAA in steals with 47 this season. **Alena Koshansky (31)** and **Melissa Czorniewy (25)** both join Smith in the top 10 in the CAA in steals.

Hens By the Numbers

	'05-06	'04-05
Home	6-0	10-3
Away	6-2	11-1
Neutral	1-0	4-2
vs. CAA at Home	2-0	7-2
vs. CAA on Road	3-1	9-0
in Overtime	0-0	0-1
Scoring 70+ points	6-0	6-0
Scoring -70 points	7-2	19-6
Allowing 70+ points	0-0	1-1
Allowing -70 points	13-2	24-5
Leading at Halftime	11-1	20-3
Trailing at Halftime	2-1	4-2
Tied at Halftime	0-0	0-1
Shoot 50%+ FG	4-0	1-0
Shoot -50% FG	9-2	24-6
Opp. shoots 50%+ FG	0-0	0-0
Opp. shoots -50% FG	13-2	25-6
Shoot 70%+ FT	9-1	19-4
Shoot -70% FT	4-1	6-2
Opp. shoots 70%+ FT	5-0	16-2
Opp. shoots -70% FT	7-2	9-4
More or = turnovers	3-1	4-3
Less turnovers	10-1	21-3
Outrebound or = Opp.	7-2	12-2
Outrebounded by Opp.	6-0	13-4
More or = Assists	8-1	18-1
Less Assists	5-1	7-5
At night	7-1	14-1
During the day	6-1	11-5
In November	4-1	2-1
In December	5-0	5-1
In January	4-1	9-0
In February	0-0	5-2
In March	0-0	3-2
Sunday	3-1	10-2
Monday	0-0	0-0
Tuesday	1-0	1-0
Wednesday	4-0	1-0
Thursday	1-0	10-1
Friday	3-1	3-0
Saturday	0-0	0-3
vs. Atlantic 10	4-0	1-0
vs. America East	0-1	1-0
vs. Big East	1-0	0-2
vs. Big Sky	0-0	0-1
vs. CAA	5-1	16-2
vs. Conference USA	0-0	0-0
vs. Independents	0-0	0-0
vs. Ivy League	1-0	0-0
vs. Metro Atlantic Athletic	0-0	2-0
vs. Mid American	1-0	0-0
vs. Mid-Eastern Athletic	0-0	0-0
vs. Patriot League	1-0	1-0
vs. SEC	0-0	1-0
vs. Southern Conference	0-0	1-0
Under Tina Martin	13-2	25-6

AROUND THE CAA**2005-06 Standings**

(Through games of 1/19)

Team	Conference			Overall		
	W	L	PCT	W	L	PCT
Old Dominion	4	0	1.000	6	7	.462
UNC Wilmington	4	1	.800	10	4	.714
Delaware	4	1	.800	12	2	.857
Hofstra	4	1	.800	9	5	.643
James Madison	3	2	.600	11	3	.786
VCU	3	2	.600	10	4	.714
Towson	2	3	.400	7	7	.500
William & Mary	2	3	.400	6	8	.429
Georgia State	1	3	.250	6	7	.462
Drexel	1	4	.200	6	8	.429
George Mason	1	4	.200	5	9	.357
Northeastern	0	5	.000	4	10	.286

This week's schedule (1/20-1/27)**January 20**

UNCW at Hofstra	12 p.m.
Northeastern at Georgia State	6 p.m.
Drexel at Delaware	7 p.m.
VCU at William & Mary	7 p.m.
Towson at James Madison	7 p.m.
George Mason at ODU	7 p.m.

January 22

Delaware at William & Mary	1 p.m.
Drexel at George Mason	2 p.m.
Towson at VCU	2 p.m.
Hofstra at Georgia State	2 p.m.
Northeastern at UNCW	2 p.m.
James Madison at ODU	3 p.m.

January 27

VCU at Northeastern	7 p.m.
Old Dominion at Hofstra	7 p.m.
UNCW at James Madison	7 p.m.
Georgia State at Drexel	7 p.m.
George Mason at Delaware	7 p.m.
William & Mary at Towson	7:30 p.m.

Results Around the CAA**January 13**

William & Mary 58, Drexel 50
 James Madison 68, Northeastern 56
 VCU 69, Georgia State 60
 UNC Wilmington 64, George Mason 51
 Old Dominion 71, Hofstra 57
Delaware 67, Towson 56

January 15

Old Dominion 63, Drexel 53
 George Mason 70, William & Mary 51
 Georgia State 89, Towson 65
 VCU 54, UNC Wilmington 37
 Hofstra 65, James Madison 53
Delaware 78, Northeastern 56

Free for All

The Blue Hens are on fire from the free throw line this season, shooting a CAA best 71.7 percent from the charity stripe. They are ranked 55th in NCAA Division I at 71.7 percent. Delaware is 9-1 in games it has shot 70 percent or better from the free throw line.

Fisher Out

Junior forward **Chrissy Fisher** will be out one to two weeks with a Lis Franc sprain of her left foot. Fisher, who leads the Colonial Athletic Association with a 95.8 percent free throw percentage, leads the team averaging 6.3 rebounds per game. She also ranks second on the team in scoring, averaging 12.0 points per game.

Number One in Three's

Junior point guard **Alena Koshansky** is ranked number one in the Colonial Athletic Association in three point shooting percentage, shooting 47.2 percent. She ranks third in the nation and first in the CAA with a 2.85 assist/turnover ratio. Koshansky surpassed guard **Bev Santee** (1991-95), who was ranked third all-time with 91 career three-point field goals with her three-pointer at Northeastern on Sunday afternoon to move her career total to 92 three-pointers.

Player of the Week

Sophomore **Melissa Czorniewy** was named the Colonial Athletic Association Player of the Week for the period ending January 16. Czorniewy hit for a career-high 26 points as Delaware defeated CAA opponent Towson, 67-56, on Friday evening at the Towson Center. She connected on 11 of 21 shots from the field and also grabbed four rebounds to lead the Blue Hens. Czorniewy established a career-high in scoring for the second straight game, dropping in 17 of her game-high 28 points in the first half as the Blue Hens handed Northeastern a 78-56 loss on Solomen Court Sunday afternoon. She hit on 10 of 18 shots from the field including all three of her three-point attempts, converted 5 of 6 free throws, and also added five rebounds.

The Pros of being a Blue Hen

Former UD players **Tiara Malcom**, **Tiffany Young** and **Allison Trapp** are playing professional basketball after their record-setting careers at Delaware. Malcom, last year's CAA Player of the Year, plays in Portugal, while Young, a third team All-CAA selection last year, is playing in Germany and Trapp, a first team All-CAA selection and the Co-

Defensive Player of the Year in 2003, is playing in Greece.

Longest Winning Streak

The Blue Hens won 17 straight games last season from December 5, 2004 through February 11, 2005. This tied the school record for the longest winning streak dating back to the 2000-2001 team that also won 17 games in a row.

Delaware Basketball Tradition

Delaware women's basketball has recorded seven consecutive winning seasons, a program record. The program has recorded 20-win seasons in five of its last six campaigns and has made postseason tournament appearances four times in the last five years, including an NCAA Tournament appearance in 2001.

It Runs in the Family

Center **Arek Deng** is one of eight children and basketball must run in her family's genes. Her older brother, Ajou, played for the Fairfield basketball team while her younger brother, Luol, is a member of the Chicago Bulls who averaged 11.7 ppg, 5.3 rpg, 2.2 apg and 27.3 mpg, while shooting .434 from the floor, including .265 from three-point range, and .741 from the free throw line. Luol was an All-American at Duke.

Welcome to our Home

Tina Martin has led the Blue Hens to an impressive 91-27 record at the Bob Carpenter Center since her inaugural season in 1996-97. Delaware, which is 6-0 at home this season, has won 12 straight regular season non-league games at home.

Just Wait Until Next Year

Delaware women's basketball is excited for next season with transfers **Jamie Mundy** (Georgetown), **Kristina Gineitis** (George Washington) and **Kyle DeHaven** (William & Mary) waiting on the sidelines to be able to play next season after sitting out one season per NCAA Division I transfer rules.

Twin Factor

Experience and excellent credentials may not be the only requirement to be a coach at Delaware. Having a twin in the family may also be a prerequisite. Head coach **Tina Martin** and Associate head coach **Jeanine Radice** are both twins -- Martin has an identical twin, Teresa, while Radice has a fraternal twin sister, Julie.

Updating the History Books

Career Scoring Leaders

No.	Name	Years	Pts.
1.	Cindy Johnson (G)	1997-2001	1,675
2.	Colleen McNamara (C)	1991-1995	1,560
3.	Debbie Eaves (F)	1986-1990	1,551
4.	Tiara Malcom	2001-2005	1,545
5.	Lori Howard	1977-1981	1,469
6.	Danielle Leyfert	1997-2001	1,447
7.	Sharon Wisler	1986-1990	1,420
8.	Meg McDowell	1982-1986	1,236
9.	Shanda Piggott	1994-1998	1,223
10.	Lisa Cano	1984-1988	1,188
11.	Christina Rible	1998-2002	1,181
12.	Jennifer Riley	1989-1992	1,165
13.	Megan Dellegrotti	1998-2002	1,112
14.	Denise Wojciech	1992-1996	1,091
15.	Sharon Howett	1974-1978	1,089
16.	Donna Werner	1980-1984	1,088
17.	Merel van Zanten	1990-1994	1,049
18.	Allison Trapp	2000-2003	1,030
19.	Molly Larkin	1989-1993	1,017
20.	Julie Sailer	2001-2005	1,001
21.	Cynthia Phipps	1980-1984	976
22.	Kathie Malloy	1980-1984	884
23.	Sarah Gause	1983-1986	880
24.	Bev Santee	1991-1995	862
25.	Sue Whitfield	1984-1988	851
26.	Keisha McFadgion	1995-1998	847
27.	Robin Stoffel	1986-1990	768
28.	Linda Cyborski	1988-1992	764
29.	Tyresa Smith	2003-	755
30.	Tiffany Young	2001-2005	729

Three-Point Field Goals

No.	Name	Years	FG
1.	Megan Dellegrotti (G)	1998-02	154
2.	Linda Cyborski	1988-92	98
3.	Alena Koshansky	2003-	92
4.	Bev Santee	1991-95	91
5.	Jen Lipinski	1989-93	76
6.	Liz Hayes	2003-05	66
7.	Keisha McFadgion	1995-98	64
8.	Lindsay Davis (F)	1998-02	63
9.	Kristen Stout	1995-98	51
10.	Julie Sailer	2001-05	45

Assists

No.	Name	Years	Asst.
1.	Bridget McCarthy (G)	1987-91	401
2.	Sue Whitfield	1984-88	358
3.	Denise Wojciech	1992-96	353
4.	Linny Price	1979-84	299
5.	Megan Dellegrotti	1998-02	284
6.	Lisa Cano	1984-88	282
7.	Bev Santee	1991-95	276
8.	Tracey Robinson	1985-89	271
9.	Danielle Leyfert (F)	1997-01	267
10.	Cindy Johnson	1997-01	265

Career Rebounding Leaders

No.	Name	Years	Reb.
1.	Colleen McNamara (C)	1991-95	1,063
2.	Sharon Howett	1974-78	1,009
3.	Debbie Eaves (F)	1986-90	992
4.	Christina Rible	1998-02	975
5.	Sharon Wisler	1986-90	875
6.	Donna Werner	1980-84	873
7.	Shanda Piggott	1994-98	862
8.	Lori Howard	1977-81	801
9.	Tiara Malcom	2001-05	794
10.	Meg McDowell	1982-86	748
11.	Kathie Malloy	1980-84	691
12.	Danielle Leyfert	1997-2001	645
13.	Christine Cole	1999-2003	623
14.	Jennifer Riley	1989-92	582
15.	Denise Wojciech (G)	1992-96	564
16.	Cindy Johnson	1997-2001	541
17.	Sarah Gause	1983-86	530
18.	Merel van Zanten	1990-94	509
19.	Tracey Howell	2000-04	501
20.	Molly Larkin	1989-93	499
21.	Julie Sailer	2001-05	487
22.	Lindsay Davis	1998-02	484
23.	Robin Stoffel	1986-90	474
24.	Tiffany Young	2001-05	455
25.	Lisa Cano	1984-88	445
26.	Jackie Porac	1995-98	443
27.	Mary Wisniewski	1972-76	432
28.	Cheryl Gittings	1978-82	405
29.	Paula Polyanski	1983-86	378
30.	Marian Moorer	1984-87	351

Blocked Shots

No.	Name	Years	Blocks
1.	Colleen McNamara (C)	1991-95	197
2.	Debbie Eaves (F)	1986-90	177
3.	Paula Polyanski	1983-86	155
4.	Sarah Gause	1983-86	115
5.	Tiara Malcom	2001-05	109
6.	Christine Cole	1999-03	108
7.	Suzanne Street	1997-00	79
8.	Merel van Zanten	1990-94	77
9.	Tracey Howell	2000-04	61
10.	Lindsay Davis	1998-02	57

Steals

No.	Name	Years	Steals
1.	Lisa Cano (G)	1984-88	277
2.	Denise Wojciech	1992-96	272
3.	Tyresa Smith	2003-	223
4.	Cynthia Phipps	1980-84	218
5.	Danielle Leyfert (F)	1997-01	184
6.	Cindy Johnson	1997-01	182
7.	Tracey Robinson	1985-89	175
8.	Linny Price	1979-84	173
	Debbie Eaves	1986-90	173
10.	Allison Trapp	2000-03	166

◆ SEASON AND CAREER HIGHS ◆AMANDA BLACKSTONE

	Season High	Career High
Points	10, twice	17 vs. Old Dominion, 3/12/04
Rebounds	8 vs. Mass., 11/18/05	10 vs. Weber, 12/4/04
Assists	2, three times	4, twice
Steals	3 vs. Drexel, 1/20/06	6, vs. Towson, 2/29/04
Blocks	1 at American, 11/20/05	2, twice
FT Att.	4, twice	6, three times
FT Made	4, twice	4, six times
FG Att.	9 vs. JMU, 1/8/06	12 vs. Old Dominion, 2/20/04
FG Made	5 vs. Mass., 11/18/05	7 vs. Old Dominion, 3/12/04
Minutes	37 at Northeastern, 1/15/06	same

KARLEENA TOBIN

	Season High	Career High
Points	12 vs. Mass., 11/18/05	same
Assists	2, twice	2, three times
Rebounds	2 vs. Georgetown, 12/20/05	3 vs. Drexel, 1/25/04
Steals	3 vs. Penn., 11/30/05	same
Blocks	1 at GMU, 12/5/05	1, twice
FT Att.	4 vs. Penn., 11/30/05	same
FT Made	3 vs. Penn., 11/30/05	3, twice
FG Att.	10, twice	same
FG Made	5, twice	same
Minutes	21, twice	same

AREK DENG

	Season High	Career High
Points	10 vs. JMU, 1/8/06	same
Rebounds	10 at SJU, 12/29/05	same
Assists	3 vs. JMU, 1/8/06	3, twice
Steals	1, eight times	2 vs. Brown, 11/20/03
Blocks	2 vs. La Salle, 11/23/05	same
FT Att.	6 at UNCW, 1/6/06	same
FT Made	5 at UNCW, 1/6/06	same
FG Att.	8 vs. JMU, 1/8/06	same
FG Made	4 vs. JMU, 1/8/06	same
Minutes	35 vs. JMU, 1/8/06	same

ALENA KOSHANSKY

	Season High	Career High
Points	24 at GMU, 12/5/05	same
Rebounds	6, twice	9 vs. Towson, 2/20/05
Assists	7 vs. Drexel, 1/20/06	7, twice
Steals	4, twice	6 at William & Mary, 2/17/05
Blocks	n/a	n/a
FT Att.	8, twice	8, three times
FT Made	6, twice	6, four times
FG Att.	8, four times	10 vs. Towson, 2/29/04
FG Made	6 at GMU, 12/5/05	6, three times
Minutes	40 at GMU, 12/5/05	same

ETHLYNNE THOMAS

	Season High	Career High
Points	4, twice	same
Rebounds	3, four times	same
Assists	2 vs. Mass., 11/18/05	same
Steals	2 vs. Penn., 11/30/05	same
Blocks	1, twice	same
FT Att.	2, twice	same
FT Made	1 at SJU, 12/29/05	same
FG Att.	5 vs. Mass., 11/18/05	same
FG Made	2, twice	same
Minutes	24 vs. Mass., 11/18/05	same

TYRESA SMITH

	Season High	Career High
Points	24 at Boston, 11/27/05	same
Rebounds	14 vs. JMU, 1/8/06	same
Assists	5, four times	7 vs. VCU, 3/10/05
Steals	7 at Towson, 1/13/06	8, three times
Blocks	3 at American, 11/20/05	3, twice
FT Att.	12 at Northeastern, 1/15/06	12, twice
FT Made	9 at Northeastern, 1/15/06	10 at Old Dominion, 1/09/05
FG Att.	21 at Boston, 11/27/05	same
FG Made	11 at Boston, 11/27/05	same
Minutes	40, three times	41 vs. Old Dominion, 3/12/05

MELISSA CZORNIEWY

	Season High	Career High
Points	28 at Northeastern, 1/15/06	same
Rebounds	9 vs. Drexel, 1/20/06	same
Assists	5 vs. JMU, 1/8/06	same
Steals	4 vs. Penn., 11/30/05	4, twice
Blocks	1, three times	2 at VCU, 1/2/05
FT Att.	8 vs. Bowling Green, 12/28/05	same
FT Made	5, twice	5, three times
FG Att.	21 at Towson, 1/13/06	same
FG Made	11 at Towson, 1/13/06	same
Minutes	38, twice	same

COURTNEY IRVING

	Season High	Career High
Points	13 at SJU, 12/29/05	same
Rebounds	9 at UNCW, 1/6/06	same
Assists	2 at GMU, 12/5/05	same
Steals	2, three times	same
Blocks	3 at UNCW, 1/6/06	same
FT Att.	6 at SJU, 12/29/05	same
FT Made	5 at SJU, 12/29/05	same
FG Att.	7, twice	same
FG Made	4, twice	same
Minutes	25 at Towson, 1/13/06	same

CHRISSE FISHER

	Season High	Career High
Points	24 at American, 11/20/05	same
Rebounds	13 at Boston, 11/27/05	same
Assists	5 at GMU, 12/5/05	same
Steals	5 at American, 11/20/05	same
Blocks	1, twice	same
FT Att.	4, four times	same
FT Made	4, four times	same
FG Att.	18, twice	same
FG Made	11 at American, 11/20/05	same
Minutes	38 at Boston, 11/27/05	same

2005-06 DELAWARE WOMEN'S BASKETBALL
 DELAWARE SEASON SCHEDULE/RESULTS & LEADERS (AS OF JAN 20, 2006)
 ALL GAMES

RECORD:	OVERALL	HOME	AWAY	NEUTRAL
ALL GAMES.....	(13-2)	(6-0)	(6-2)	(1-0)
CONFERENCE.....	(5-1)	(2-0)	(3-1)	(0-0)
NON-CONFERENCE.....	(8-1)	(4-0)	(3-1)	(1-0)

DATE	TIME	OPPONENT	SCORE	ATTEND	HIGH POINTS	HIGH REBOUNDS
11/18/05	7 P.M.	MASSACHUSETTS	W 71-44	1158	(14)KOSHANSKY, ALENA	(8)BLACKSTONE, AMANDA
11/20/05	2:00 P.M.	AT AMERICAN UNIVERSITY	W 64-38	213	(24)FISHER, CHRISSY	(11)FISHER, CHRISSY
11/23/05	7:00 P.M.	LASALLE	W 70-60	890	(19)FISHER, CHRISSY	(10)FISHER, CHRISSY
11/27/05	1:00 P.M.	AT BOSTON UNIVERSITY	W 59-61 L	257	(24)SMITH, TYRESA	(13)FISHER, CHRISSY
11/30/05	7 P.M.	PENNSYLVANIA	W 78-34	868	(19)CZORNIEWSKY, MELISSA	(8)IRVING, COURTNEY
12/04/05	2:00 P.M.	* AT GEORGE MASON	W 74-63	500	(24)KOSHANSKY, ALENA	(5)KOSHANSKY, ALENA (5)BLACKSTONE, AMANDA (5)SMITH, TYRESA
12/07/05	7:00 PM	AT FORDHAM	W 60-56	235	(14)SMITH, TYRESA (14)FISHER, CHRISSY	(8)FISHER, CHRISSY
12/20/05	7 P.M.	GEORGETOWN	W 65-43	947	(15)SMITH, TYRESA	(9)SMITH, TYRESA
12/28/05	4:00	# VS BOWLING GREEN	W 48-44	843	(12)SMITH, TYRESA	(7)CZORNIEWSKY, MELISSA
12/29/05	4:00	# AT SAINT JOSEPH'S	W 49-48	1276	(17)CZORNIEWSKY, MELISSA	(10)DENG, AREK
01/06/06	7 P.M.	* AT UNC WILMINGTON	41-55 L	429	(12)SMITH, TYRESA	(9)IRVING, COURTNEY
01/08/06	2 P.M.	* JAMES MADISON	W 70-62	1136	(20)SMITH, TYRESA	(14)SMITH, TYRESA
01/13/06	7:30 P.M.	* AT TOWSON	W 67-56	337	(26)CZORNIEWSKY, MELISSA	(7)SMITH, TYRESA
01/15/06	3 PM	* AT NORTHEASTERN	W 78-56	952	(28)CZORNIEWSKY, MELISSA	(6)SMITH, TYRESA (6)BLACKSTONE, AMANDA
01/20/06	7 P.M.	* DREXEL	W 57-55	1139	(18)CZORNIEWSKY, MELISSA	(9)CZORNIEWSKY, MELISSA

* = COLONIAL ATHLETIC ASSOC. GAME			
# = SAINT JOSEPH'S TOURNAMENT			
ATTENDANCE SUMMARY	GAMES	TOTALS	AVG/GAME
HOME.....	6	6138	1023
AWAY.....	8	4199	525
NEUTRAL.....	1	843	843
TOTAL.....	15	11180	745

INDIVIDUAL STATISTICS

##	PLAYER	GP-GS	MIN--AVG	---TOTAL---			---3-PTS---			---REBOUNDS---					A	TO	BLK	STL	PTS	AVG	
				FG-FGA	Pct	3FG-FGA	Pct	FT-FTA	Pct	OFF	DEF	TOT	AVG	PF							FO
23	SMITH, TYRESA.....	15-15	467 31.1	70-175	.400	0-3	.000	68-102	.667	24	62	86	5.7	44	1	35	34	14	47	208	13.9
21	CZORNIEWSKY, MELISSA..	15-15	460 30.7	82-169	.485	8-21	.381	30-45	.667	23	38	61	4.1	34	0	33	43	3	25	202	13.5
13	FISHER, CHRISSY.....	10-10	261 26.1	45-111	.405	7-23	.304	23-24	.958	22	41	63	6.3	27	0	18	30	2	20	120	12.0
12	KOSHANSKY, ALENA.....	15-15	507 33.8	36-75	.480	25-53	.472	33-46	.717	3	48	51	3.4	29	1	64	23	0	31	130	8.7
30	IRVING, COURTNEY.....	15-4	237 15.8	30-60	.500	0-0	.000	23-30	.767	31	33	64	4.3	41	1	4	16	6	10	83	5.5
03	LIVINGSTON, GENEVA..	1-0	10 10.0	1-5	.200	1-1	1.000	2-2	1.000	1	0	1	1.0	0	0	0	1	0	1	5	5.0
32	BLACKSTONE, AMANDA..	15-5	378 25.2	25-73	.342	2-11	.182	13-14	.929	19	34	53	3.5	29	0	12	19	1	12	65	4.3
40	DENG, AREK.....	15-11	392 26.1	26-64	.406	0-0	.000	12-17	.706	29	45	74	4.9	26	0	3	22	6	8	64	4.3
22	TOBIN, KARLENA.....	15-0	187 12.5	23-59	.390	3-15	.200	8-11	.727	2	8	10	0.7	18	0	10	14	1	12	57	3.8
44	KLINE, KATIE.....	3-0	5 1.7	2-2	1.000	0-0	.000	0-0	.000	0	0	0	0.0	2	0	0	1	0	0	4	1.3
24	THOMAS, ETHLYNNE....	13-0	98 7.5	6-12	.500	0-0	.000	1-6	.167	9	8	17	1.3	12	0	4	4	2	5	13	1.0
	TEAM.....											27	23	50	3.3	0			4		
	TOTAL.....	15	3002	346-805	.430	46-127	.362	213-297	.717	190	340	530	35.3	262	3	183	211	35	171	951	63.4
	OPPONENTS.....	15	3001	279-763	.366	65-254	.256	152-234	.650	184	310	494	32.9	263	-	191	285	41	92	775	51.7

SCORE BY PERIODS:	1st	2nd	TOTAL
DELAWARE.....	453	498	951
OPPONENTS.....	350	425	775

TEAM STATISTICS	DELAWARE	OPP
SCORING.....	951	775
POINTS PER GAME.....	63.4	51.7
SCORING MARGIN.....	+11.7	-
FIELD GOALS-ATT.....	346-805	279-763
FIELD GOAL PCT.....	.430	.366
3 POINT FG-ATT.....	46-127	65-254
3-POINT FG PCT.....	.362	.256
3-PT FG MADE PER GAME..	3.1	4.3
FREE THROWS-ATT.....	213-297	152-234
FREE THROW PCT.....	.717	.650
REBOUNDS.....	530	494
REBOUNDS PER GAME.....	35.3	32.9
REBOUNDING MARGIN.....	+2.4	-
ASSISTS.....	183	191
ASSISTS PER GAME.....	12.2	12.7
TURNOVERS.....	211	285
TURNOVERS PER GAME.....	14.1	19.0
TURNOVER MARGIN.....	+4.9	-
ASSIST/TURNOVER RATIO..	0.9	0.7
STEALS.....	171	92
STEALS PER GAME.....	11.4	6.1
BLOCKS.....	35	41
BLOCKS PER GAME.....	2.3	2.7
WINNING STREAK.....	4	-
HOME WIN STREAK.....	6	-
ATTENDANCE.....	6138	5042
HOME GAMES-AVG/GAME...	6-1023	8-525
NEUTRAL SITE-AVG/GAME..	-	1-843

SCORE BY PERIODS:	1st	2nd	TOTAL
DELAWARE.....	453	498	951
OPPONENTS.....	350	425	775

GAME BY GAME TEAM STATISTICS

Opponent	Date	Score	W/L	---TOTAL---		--3-PTRS--		----REBOUNDS----				PF	A	TO	Blk	Stl	Pts	Avg		
				FG-FGA	Pct	3FG-FGA	Pct	Off	Def	Tot	Avg									
MASSACHUSETTS	11/18/05	71-44	W	29-55	.527	2-6	.333	11-14	.786	11	22	33	33.0	24	15	15	4	13	71	71.0
at American Universit	11/20/05	64-38	W	26-52	.500	2-8	.250	10-18	.556	14	28	42	37.5	19	10	24	4	11	64	67.5
LASALLE	11/23/05	70-60	W	27-55	.491	9-17	.529	7-9	.778	13	17	30	35.0	19	16	14	4	11	70	68.3
at Boston University	11/27/05	59-61	L	25-63	.397	2-7	.286	7-13	.538	15	25	40	36.2	21	18	12	2	12	59	66.0
PENNSYLVANIA	11/30/05	78-34	W	25-49	.510	1-6	.167	27-31	.871	8	18	26	34.2	21	11	11	2	22	78	68.4
at George Mason	12/04/05	74-63	W	24-45	.533	9-11	.818	17-24	.708	5	23	28	33.2	19	18	18	2	11	74	69.3
at Fordham	12/07/05	60-56	W	23-70	.329	3-10	.300	11-14	.786	19	20	39	34.0	12	12	8	1	7	60	68.0
GEORGETOWN	12/20/05	65-43	W	26-60	.433	1-11	.091	12-13	.923	18	22	40	34.8	18	14	13	1	11	65	67.6
vs Bowling Green	12/28/05	48-44	W	14-47	.298	4-15	.267	16-22	.727	13	25	38	35.1	15	9	19	3	14	48	65.4
at Saint Joseph's	12/29/05	49-48	W	17-49	.347	2-8	.250	13-21	.619	8	26	34	35.0	18	7	13	1	7	49	63.8
at UNC Wilmington	01/06/06	41-55	L	12-50	.240	2-8	.250	15-18	.833	20	17	37	35.2	15	4	14	5	10	41	61.7
JAMES MADISON	01/08/06	70-62	W	26-53	.491	3-8	.375	15-20	.750	4	32	36	35.2	13	13	13	2	6	70	62.4
at Towson	01/13/06	67-56	W	25-55	.455	1-2	.500	16-26	.615	10	20	30	34.8	14	14	8	2	16	67	62.8
at Northeastern	01/15/06	78-56	W	26-55	.473	4-7	.571	22-31	.710	18	22	40	35.2	19	13	13	0	10	78	63.9
DREXEL	01/20/06	57-55	W	21-47	.447	1-3	.333	14-23	.609	14	23	37	35.3	15	9	16	2	10	57	63.4
Delaware		951		346-805	.430	46-127	.362	213-297	.717	190	340	530	35.3	262	183	211	35	171	951	63.4
Opponents		775		279-763	.366	65-254	.256	152-234	.650	184	310	494	32.9	263	191	285	41	92	775	51.7

GAME BY GAME OPPONENT STATISTICS

Opponent	Date	Score	W/L	---TOTAL---		--3-PTRS--		----REBOUNDS----				PF	A	TO	Blk	Stl	Pts	Avg		
				FG-FGA	Pct	3FG-FGA	Pct	Off	Def	Tot	Avg									
MASSACHUSETTS	11/18/05	71-44	W	14-43	.326	1-14	.071	15-23	.652	11	17	28	28.0	15	8	24	1	4	44	44.0
at American Universit	11/20/05	64-38	W	12-53	.226	3-17	.176	11-19	.579	14	17	31	29.5	20	8	23	2	12	38	41.0
LASALLE	11/23/05	70-60	W	22-55	.400	6-24	.250	10-13	.769	18	15	33	30.7	11	11	17	1	8	60	47.3
at Boston University	11/27/05	59-61	L	19-50	.380	6-22	.273	17-26	.654	12	28	40	33.0	15	14	15	7	7	61	50.8
PENNSYLVANIA	11/30/05	78-34	W	9-41	.220	2-15	.133	14-22	.636	18	19	37	33.8	24	4	33	2	3	34	47.4
at George Mason	12/04/05	74-63	W	25-56	.446	4-14	.286	9-17	.529	13	18	31	33.3	17	17	19	4	7	63	50.0
at Fordham	12/07/05	60-56	W	23-51	.451	5-16	.313	5-6	.833	6	28	34	33.4	15	17	17	5	4	56	50.9
GEORGETOWN	12/20/05	65-43	W	13-47	.277	3-11	.273	14-19	.737	15	16	31	33.1	14	9	20	1	6	43	49.9
vs Bowling Green	12/28/05	48-44	W	17-52	.327	6-22	.273	4-9	.444	13	22	35	33.3	18	13	21	3	9	44	49.2
at Saint Joseph's	12/29/05	49-48	W	18-49	.367	4-19	.211	8-14	.571	9	27	36	33.6	23	14	17	2	4	48	49.1
at UNC Wilmington	01/06/06	41-55	L	23-48	.479	6-11	.545	3-6	.500	10	20	30	33.3	16	19	14	2	8	55	49.6
JAMES MADISON	01/08/06	70-62	W	23-65	.354	4-15	.267	12-18	.667	12	25	37	33.6	19	12	10	3	6	62	50.7
at Towson	01/13/06	67-56	W	22-51	.431	4-17	.235	8-10	.800	9	25	34	33.6	18	20	22	4	4	56	51.1
at Northeastern	01/15/06	78-56	W	21-54	.389	2-10	.200	12-18	.667	14	15	29	33.3	19	13	18	3	5	56	51.4
DREXEL	01/20/06	57-55	W	18-48	.375	9-27	.333	10-14	.714	10	18	28	32.9	19	12	15	1	5	55	51.7
Opponents		775		279-763	.366	65-254	.256	152-234	.650	184	310	494	32.9	263	191	285	41	92	775	51.7
Delaware		951		346-805	.430	46-127	.362	213-297	.717	190	340	530	35.3	262	183	211	35	171	951	63.4

GAME BY GAME COMPARISON

Opponent	1st	2nd	Score	Mar	Total FG	FG Pct	3-Pointers	3FG Pct	Free Throws	FT Pct	Rebounds	Assist	Tover	Block	Steal	Fouls	
MASSACHUSETTS	31/15	40/29	71-44	+27	29-55/14-43	.527/.326	2-6 / 1-14	.333/.071	11-14/15-23	.786/.652	33/28	+5	15/8	15/24	4/1	13/4	24/15
American University	28/16	36/22	64-38	+26	26-52/12-53	.500/.226	2-8 / 3-17	.250/.176	10-18/11-19	.556/.579	42/31	+11	10/8	24/23	4/2	11/12	19/20
LASALLE	38/27	32/33	70-60	+10	27-55/22-55	.491/.400	9-17 / 6-24	.529/.250	7-9 / 10-13	.778/.769	30/33	(3)	16/11	14/17	4/1	11/8	19/11
Boston University	34/32	25/29	59-61	(2)	25-63/19-50	.397/.380	2-7 / 6-22	.286/.273	7-13/17-26	.538/.654	40/40	+0	18/14	12/15	2/7	12/7	21/15
PENNSYLVANIA	40/11	38/23	78-34	+44	25-49 / 9-41	.510/.220	1-6 / 2-15	.167/.133	27-31/14-22	.871/.636	26/37	(11)	11/4	11/33	2/2	22/3	21/24
George Mason	33/31	41/32	74-63	+11	24-45/25-56	.533/.446	9-11 / 4-14	.818/.286	17-24 / 9-17	.708/.529	28/31	(3)	18/17	18/19	2/4	11/7	19/17
Fordham	33/26	27/30	60-56	+4	23-70/23-51	.329/.451	3-10 / 5-16	.300/.313	11-14 / 5-6	.786/.833	39/34	+5	12/17	8/17	1/5	7/4	12/15
GEORGETOWN	28/16	37/27	65-43	+22	26-60/13-47	.433/.277	1-11 / 3-11	.091/.273	12-13/14-19	.923/.737	40/31	+9	14/9	13/20	1/1	11/6	18/14
Bowling Green	17/21	31/23	48-44	+4	14-47/17-52	.298/.327	4-15 / 6-22	.267/.273	16-22 / 4-9	.727/.444	38/35	+3	9/13	19/21	3/1	13/4	15/18
Saint Joseph's	21/23	28/25	49-48	+1	17-49/18-49	.347/.367	2-8 / 4-19	.250/.211	13-21 / 8-14	.619/.571	34/36	(2)	7/14	13/17	1/2	7/4	18/23
UNC Wilmington	16/30	25/25	41-55	(14)	12-50/23-48	.240/.479	2-8 / 6-11	.250/.545	15-18 / 3-6	.833/.500	37/30	+7	4/19	14/14	5/2	10/8	15/16
JAMES MADISON	33/29	37/33	70-62	+8	26-53/23-65	.491/.354	3-8 / 4-15	.375/.267	15-20/12-18	.750/.667	36/37	(1)	13/12	13/10	2/3	6/6	13/19
Towson	31/30	36/26	67-56	+11	25-55/22-51	.455/.431	1-2 / 4-17	.500/.235	16-26 / 8-10	.615/.800	30/34	(4)	14/20	8/22	2/4	16/4	14/18
Northeastern	40/22	38/34	78-56	+22	26-55/21-54	.473/.389	4-7 / 2-10	.571/.200	22-31/12-18	.710/.667	40/29	+11	13/13	13/18	0/3	10/5	19/19
DREXEL	30/21	27/34	57-55	+2	21-47/18-48	.447/.375	1-3 / 9-27	.333/.333	14-23/10-14	.609/.714	37/28	+9	9/12	16/15	2/1	10/5	15/19

Note: Game totals are displayed in the format TEAM/OPPONENT for each category
 Delaware Game-by-Game Points-Rebounds-Assists (as of Jan 20, 2006)

Opponent	Date	Score	WL	03		12		13		21		22		23		24		30		32
				LIVINGSTO	KOSHANSKY	FISHER,CH	CZORNIEWY	TOBIN,KAR	SMITH,TYR	THOMAS,ET	IRVING,CO	BLACKSTON								
MASSACHUSETTS	11/18/05	71-44	W	DNP	14- 4- 3	2- 2- 2	8- 2- 2	12- 0- 2	11- 2- 2	4- 3- 2	4- 3- 0	4- 3- 0	10- 8- 2							
at American University	11/20/05	64-38	W	DNP	2- 4- 4	24-11- 0	9- 3- 2	6- 1- 1	11- 6- 1	4- 3- 0	2- 2- 1	0- 3- 1								
LASALLE	11/23/05	70-60	W	DNP	14- 2- 3	19-10- 2	12- 3- 3	3- 1- 1	12- 0- 5	0- 0- 1	2- 4- 0	5- 3- 1								
at Boston University	11/27/05	59-61	L	DNP	5- 6- 5	19-13- 4	2- 5- 3	2- 1- 0	24- 4- 5	0- 0- 0	4- 3- 1	3- 0- 0								
PENNSYLVANIA	11/30/05	78-34	W	DNP	6- 1- 5	12- 4- 1	19- 2- 3	9- 1- 2	6- 5- 0	2- 1- 0	8- 8- 0	8- 2- 0								
at George Mason	12/04/05	74-63	W	DNP	24- 5- 5	12- 3- 5	6- 3- 0	0- 0- 0	15- 5- 5	0- 0- 0	4- 2- 2	9- 5- 1								
at Fordham	12/07/05	60-56	W	DNP	8- 6- 5	14- 8- 1	12- 4- 2	0- 0- 0	14- 6- 4	DNP	6- 3- 0	4- 3- 0								
GEORGETOWN	12/20/05	65-43	W	DNP	7- 2- 6	9- 4- 1	1													

◆ RADIO & TV CHART ◆

#3 Geneva Livingston

Sr. ♦ Guard ♦ 5-10
Red Bank, NJ

PPG _____
RPG _____
APG _____
Misc. _____



#12 ALENA KOSHANSKY

Jr. ♦ Guard ♦ 5-8
Fairfax, VA

PPG _____
RPG _____
APG _____
Misc. _____



#13 CHRISSY FISHER

Jr. ♦ Forward ♦ 6-0
Rumson, NJ


PPG _____
RPG _____
APG _____
Misc. _____



#21 MELISSA CZORNIEWY

So. ♦ Guard ♦ 5-9
Bergenfield, NJ

PPG _____
RPG _____
APG _____
Misc. _____



#22 KARLEENA TOBIN

Sr. ♦ Guard ♦ 5-8
Baltimore, MD

PPG _____
RPG _____
APG _____
Misc. _____



#23 TYRESA SMITH

Jr. ♦ Guard ♦ 5-10
Dover, DE


PPG _____
RPG _____
APG _____
Misc. _____



#24 ETHLYNNE THOMAS

Fr. ♦ Guard ♦ 5-10
Gaithersburg, MD

PPG _____
RPG _____
APG _____
Misc. _____



#30 COURTNEY IRVING

So. ♦ Forward ♦ 6-1
Hockessin, DE

PPG _____
RPG _____
APG _____
Misc. _____



#32 AMANDA BLACKSTONE

Sr. ♦ Guard ♦ 6-0
Schenectady, NY


PPG _____
RPG _____
APG _____
Misc. _____



#40 AREK DENG

Sr.-r ♦ Center ♦ 6-4
London, England

PPG _____
RPG _____
APG _____
Misc. _____



#42 FARRAH FERGUSON

Fr. ♦ Center ♦ 6-4
Ambler, PA

PPG _____
RPG _____
APG _____
Misc. _____

