

University of Delaware

Women's Basketball

Game Notes ♦ Game 15 ♦ Delaware (11-3, 3-2) vs. George Mason (8-4, 3-2)
 Thursday, January 22, 2004 ♦ 7 p.m. ♦ Patriot Center (10,000) ♦ Fairfax, VA

♦ Series Info: Delaware vs. George Mason ♦

All-Time Series Record: George Mason leads the all-time series, 8-4, with the first meeting between the two mid-atlantic teams occurring in the 1987-88 season. (For year-by-year results, see the opponent section in the media guide.)

Last meeting between Delaware & George Mason: Delaware suffered through a miserable night on offense and had its four-game win streak snapped in a 47-36 CAA loss to George Mason at the Patriot Center on February 20, 2003.

Last time out for the BlueHens: Tiffany Young tallied her second career double-double with 12 points and 14 rebounds to lead five Delaware players scoring double figures in a 66-56 CAA win over Virginia Commonwealth Sunday afternoon at the Bob Carpenter Center.

Last time out for the Patriots: UNC Wilmington had three players score in double-figures to top George Mason University by a score of 65-57 at the Patriot Center Sunday afternoon.

♦ Probable Delaware Starters ♦

2003-04 Statistics							Miscellaneous	
No.	Name	Pos.	Yr.	GP/GS	ppg	rpg	apg	
4	Liz Hayes	.G.	Fr.	14/14	7.6	1.9	1.3	Hit three 3-pointers against VCU
15	Julie Sailer	.G.	Jr.	14/14	10.9	4.7	1.2	Scored double-digits in past three games
23	Tyresa Smith	.G.	Fr.	14/2	7.0	3.7	1.6	Tied UD mark for steals in a game (8) on 1/15
33	Tiara Malcom	.F.	Jr.	14/14	13.3	6.4	1.3	Played in 75 consecutive games
50	Tracey Howell	.F.	Sr.	14/14	5.4	7.2	2.0	10 points, nine rebounds vs W&M

Off the Bench							Miscellaneous	
No.	Name	Pos.	Yr.	GP/GS	ppg	rpg	apg	
12	Alena Koshansky	.G.	Fr.	14/0	3.0	1.3	0.6	Scored 10 points vs. VCU
22	Karleena Tobin	.G.	So.	6/0	2.0	0.3	0.3	Scored eight points against Hofstra
24	Jayne Boyer	.F.	Sr.	3/0	0.0	0.7	0.3	Had a block in win vs. La Salle
25	Tiffany Young	.F.	Jr.	14/12	11.6	7.7	0.6	1st double-double (12pts, 14rbs) on 1/9
31	Kristy Gaines	.C.	Jr.	11/0	1.5	1.5	0.0	Collected eight rebounds vs. Richmond
32	Amanda Blackstone	.G.	So.	13/0	2.8	2.0	0.4	Tied career-high six points on 12/3
40	Arek Deng	.C.	So.	11/0	0.3	0.9	0.1	Pulled down four boards vs. Brown

(Pronunciation guide available on page two)

♦ Injury Report ♦

Junior Jackie Gordon is out for the season after suffering a knee injury in the pre-season. Gordon had surgery on her knee on November 20.

♦ More on the Hens' Last Game ♦



NEWARK, DE (Jan. 20) ~ Junior forward **Tiffany Young** posted her second double-double of the season with 12 points and a career-high tying 14 rebounds to lead five scorers in double figures as the University of Delaware women's basketball team took over in the second half for a 66-56 victory over Virginia Commonwealth Sunday afternoon at the Bob Carpenter Center. The Blue Hens won their second straight game as they overcame a three-point halftime deficit with a quick second half start. Freshman guard **Liz Hayes** added 12 points, hit three three-pointers, including

two early in the second half, and dished out three assists, and forward **Tiara Malcom**, guard **Julie Sailer**, and guard **Alena Koshansky** each added 10 points to lead the balanced effort. The Hens put five scorers in double figures for the first time since a win over Drexel Feb. 4, 2001. Virginia Commonwealth, which has lost four of its last six games, fell to 5-8 despite an outstanding effort from senior guard **Cyndy Wilks**. Wilks, the CAA's leading scorer at 19.5 points per game, erupted for 30 points as she hit on 9 of 17 shots from the field and 11 of 13 free throws. She also pulled a team-high nine rebounds. Wilks hit for over 20 points for the seventh time this season but the rest of her teammates combined for just 26 points. The Rams could not overcome 26 turnovers for the game and 38.1 percent shooting from the field (8 of 21) in the second half. (For more info, see game summaries and box scores...)

♦ 2003-04 Schedule ♦

November		
Tue.	4	Turkish Nat. Team (Exhibition)60-56 (V)
Fri.	21	Richmond78-80 OT (I)
Tue.	25	at Stony Brook67-58 (V)
Sat.	29	Brown#60-47 (V)
Sun.	30	Fairfield#61-51 OT (V)

December		
Wed.	3	La Salle69-47 (V)
Fri.	5	Navy69-57 (V)
Mon.	8	at St. John's59-44 (V)
Sun.	14	at Loyola (MD)54-25 (V)
Mon.	22	Manhattan63-42 (V)

January		
Sun.	4	at *UNC Wilmington57-56 (V)
Fri.	9	at *Wm. & Mary56-68 (I)
Sun.	11	*Old Dominion56-67 (I)
Thu.	15	*Hofstra78-47 (V)
Sun.	18	*Va. Commonwealth66-56 (V)
Thu.	22	AT *GEORGE MASON (1290AM)7 p.r
Sun.	25	at *Drexel1 p.r
Thu.	29	*Towson (1290AM, WVUD-FM)7 p.r

February		
Sun.	1	at *James Madison2 p.r
Thu.	5	at *Va. Commonwealth7 p.r
Sun.	8	*Wm. & Mary (1290AM, WVUD2)3 p.r (CAA TV Game of the Week)
Thu.	12	*James Madison (1290AM, WVUD2)7 p.r
Sun.	15	at *Hofstra2 p.r
Fri.	20	at *Old Dominion (WVUD-FM)7 p.r
Sun.	22	*UNC Wilmington (1290AM, WVUD2)1 p.r
Thu.	26	*Drexel (1290AM)7 p.r
Sun.	29	at *Towson (1290AM)1 p.r

March		
Thu.	4	*George Mason (1290 AM, WVUD2)7 p.r
Wed-Sun.10-13		ALL TELCAA Tour (Norfolk, VA)TE (1290AM, WVUD2)

#Coca-Cola Classic at Fairfield University
 *CAAGames
 Home Games in BOLD

♦ Media Contacts ♦

WBB Contact: Austin Calhoun
Office Phone: 302-831-2186
Office Fax: 302-831-8653, **Cell Phone:** 703-606-6097
Email: acalhoun@udel.edu

Sports Information Director: Scott Selheimer
Office Phone: 302-831-2186
Email: selheime@udel.edu

◆ The Last Time ◆

UDplayed overtime...
11/30/2003 vs. Fairfield (W 61-51)

UD played double-overtime...
1/20/1997 at Drexel (L69-73)

UDscored 100 points...
2/27/1981 vs. Temple (101-96 OT)

UD allowed 100 points...
2/13/1997 vs. Maine (54-73)

UD was held under 40 points...
2/20/2003 at GMU (L36-47)

UD held opponent under 40 points...
12/14/2003 vs. Loyola (MD) (W 54-25)

UD made five 3-pt FGs...
5-14 vs. Virginia Commonwealth, 1/18/04

An opponent made five 3-pt FGs...
5-14, William & Mary, 1/9/2003

A Blue Hen scored 20 points...
Tiara Malcom (21) vs. UNCW, 1/4/2003

An opponent scored 20 points...
Max Nhassengo (20) ODU, 1/11/2004

A Blue Hen scored 25 points...
Allison Trapp (28) at ODU, 3/15/2003
(CAAC Championship)

An opponent scored 25 points...
Cyndy Wilks (30), Virginia Commonwealth,
1/18/04

A Blue Hen grabbed 10 rebounds...
Tiffany Young (14) vs. Virginia Commonwealth,
1/18/04

An opponent grabbed 10 rebounds...
Vanessa Gidden (13) Hofstra, 1/15/2004

A Blue Hen grabbed 15 rebounds...
Tiara Malcom (16) at JMU, 1/30/2003

An opponent grabbed 15 rebounds...
Tracy Morgan (16) UNCW, 1/4/2002

A Blue Hen had 10 assists...
Christine Koren (10) at Lafayette, 11/19/1999

An opponent had 10 assists...
Lauren Hall-Gregory (10) Hofstra, 2/2/2001

A Blue Hen had 5 blocks...
Tiara Malcom (5) vs. Richmond, 11/22/2002

An opponent had 5 blocks...
Nicole Turner (5) ODU (CAAFinal), 3/15/2003

A Blue Hen had 5 steals...
Tyresa Smith (8) vs. Hofstra, 1/15/2004

An opponent had 5 steals...
Staceyann Claxton (6) Hofstra, 1/15/2004

A Blue Hen had a "double-double" ...
Tiffany Young (12 pts, 14 rbs) Virginia
Commonwealth, 1/18/04

An opponent had a "double-double" ...
Monique Coker (10 pts, 12 rbs) ODU, 1/11/2004



◆ Quick Shots ◆

◆ Delaware is still on track to have one of the most successful campaigns in school history. Delaware has only once opened the season with a better record through 14 games. In 1983-84, the Hens posted a 13-1 record and finished 22-4 (8-0 East Coast Conference). This year's start is the second-best mark through 14 games in program history, tied with the 11-3 starts of the 1980-81 and 2000-01 seasons. Delaware went 18-11 (9-5 ECC) in 80-81 and 26-5 (17-1 America East) in 2000-01 to win the conference and receive its first-ever berth to the NCAA tournament.

◆ Last year against the Patriots, the Hens had their worst offensive output with (36-47) since a 36-92 loss on January 17, 1980 to Cheyney State. The 36 points Delaware put up against George Mason is the second-worst total score in all-time UD history. The Hens lowest total points is 32. In 1974, Delaware fell to Immaculata, 32-70 on February 6 and to Temple, 32-47 on March 2.

◆ Delaware had five players in double-figures against Virginia Commonwealth on Sunday for the first time since February 2001 in a win over Drexel. The most players Delaware has ever had in double-digits in a single game is seven, which occurred on February 1, 2001 in a 83-73 win over Hofstra.

◆ George Mason and Delaware both sit at 3-2 in CAA action with the only common opponent being Virginia Commonwealth. The Hens defeated VCU 66-56 while the Patriots downed the Rams 77-62 on January 11.

◆ In Delaware's Corner ◆



Tina Martin, Head Coach... Eighth season at University of Delaware... compiled a 134-83 record at the helm of the Hens' basketball program becoming, the fastest UD basketball coach (men's or women's) to reach 100 career wins... has led the Blue Hens to four-straight 20 win seasons and three consecutive post season appearances... spent nine seasons at Seton Hall as an assistant coach in a program that made back-to-back NCAA tournament appearances in 1994 and 1995, advancing to the Sweet 16 in 1994... was a two-time Division II All-American at Lock Haven University, a four-time Pennsylvania State Athletic Conference All-Star, and two-time league Player of the Year who finished her career as the PSAC's all-time leading scorer with 2,157 career points.

◆ Blue Hens on The Air ◆

Tonight's Game

Tonight's contest will be available on The Ticket 1290 AM and on internet radio broadcast on The Ticket's website (<http://www.1290theticket.com>). The game will also be broadcasted by George Mason (<http://gmusports.ocsn.com/multimedia/gema-multimedia.html>). Live statistics, courtesy of George Mason, are also available from this site.

The Tina Martin Show

The Tina Martin Show airs each Monday from 6:30-7 p.m. on The Ticket 1290 AM and The River 94.7 FM (RealAudio links are available at www.udel.edu/sportsinfo/womens_basketball). Each Monday, the Tina Martin Show will be broadcast from the legendary Deer Park Tavern on Main Street in downtown Newark.

Coach Martin is joined by the voice of the Blue Hens, Mike Corey, for a review of the past week's game, a preview of upcoming action, and a series of questions from the restaurant audience and listeners via call-in. During the 2003-04 season, the live shows are scheduled for Dec. 1, Dec. 8, Dec. 15, Dec. 22, Dec. 29, Jan. 5, Jan. 12, Jan. 19, Jan. 26, Feb. 2, Feb. 9, Feb. 16, Feb. 23, Mar. 1 and Mar. 8.

Radio Coverage

For the fifth straight year, the Blue Hen radio network's flagship station is The Ticket 1290 AM. Also on the network are WDOV-AM 1410 (Dover) and WTGM-AM 960 (Salisbury). The majority of the home Blue Hen women's basketball action will be available via the Blue Hen radio network. For more detailed listings, see the Delaware Women's Basketball home page (www.udel.edu/sportsinfo/womens_basketball).

In addition, many UDbasketball games are also broadcast on the UD student station, WVUD-FM 91.3, and WVUD2, the station's internet radio network.

Real Audio links for both broadcasts are available through UD's athletics website. Delaware women's basketball will also be appearing on television in 2004 as it takes part in the CAA Game of the Week on February 8 at William & Mary. Details to follow as they become available.

◆ Pronunciation Guide ◆

Don't worry, you're not the only one who can't say Amanda Blackstone's home town (Sku-neck-ta-dee) or her high school (MO-nass-hen). So, here is the rest of the "tough ones" of the 2003-04 Blue Hens, all sounded out.

- ◆ #12 Alena (Uh - LAY - nuh) Koshansky (KUH - SHAN - ski)
- ◆ #23 Tyresa (TIE - REE - suh) Smith
- ◆ #24 Jayne (JAY - NEE) Boyer
- ◆ #33 Tiara (TEE - AIR - uh) Malcom
- ◆ #40 Arek (EH - REK) Deng
- ◆ Asst. Head Coach Jeanine Radice (Ruh - DEESE)

8th

National ranking in scoring defense in DI women's basketball

75

Consecutive contests junior Tiara Malcom has played in

12

Alena Koshansky's career-high in points set vs. Hofstra

8

Steals Tyresa Smith had vs. Hofstra to tie school record

6

Games UD has held opponents under 50 total points in '03-04

Hens By the Numbers

Table with 4 columns: '03-04, '02-'03, '01-'02. Rows include Home, Away, Neutral, vs. CAA at Home, vs. CAA on Road, in Overtime, Scoring 70+ points, Scoring -70 points, Allowing 70+ points, Allowing -70 points, Leading at Halftime, Trailing at Halftime, Tied at Halftime, Shoot 50%+ FG, Shoot -50% FG, Opponent shoots 50%+ FG, Opponent shoots -50% FG, Shoot 70%+ FT, Shoot -70% FT, Opponent shoots 70%+ FT, Opponent shoots -70% FT, More or = turnovers, Less turnovers, Out rebounded or = Opponent, Out rebounded by Opponent, More or = Assists, Less Assists, At night, During the day, In November, In December, In January, In February, In March, Sunday, Monday, Tuesday, Wednesday, Thursday, Friday, Saturday, vs. Atlantic 10, vs. America East, vs. Big East, vs. Big South, vs. CAA, vs. Conference USA, vs. Independents, vs. Ivy League, vs. Metro Atlantic Athletic, vs. Mid-Eastern Athletic, vs. Northeast, vs. Patriot League, vs. Southern Conference, under Tina Martin.



Young in 2003-04

Junior forward Tiffany Young's improvement as a player is obvious. After averaging just 1.8 ppg in 02-03, Young has stepped it up 2003-04. Before this season, Young had never scored in double-digits. Now, Young has had two twenty-point performances and two double-doubles with 12 points and a career-high 14 rebounds against William & Mary on January 9 and 12 points and 14 rebounds against Virginia Commonwealth on January 18. As Delaware's second-leading scorer (11.6 ppg), she tallied her first 20 point game against Fairfield in the championship game of the Coca-Cola Classic, earning her a spot on the all-tournament team. Against Manhattan, Young reached the 20 point mark for the second time, surpassing it with 21 points and 11-14 shooting from the foul line.

NCAA Division I Scoring Defense Rankings

Table with 3 columns: No., Name, W-L, OPP PPG. Rows 1-10: 1. Texas Tech (16-1, 50.1), 2. New Mexico (9-5, 50.5), 3. Southern Miss (13-3, 50.8), 4. Auburn (12-3, 50.8), 5. UNC Asheville (12-3, 51.3), 6. Ohio St (10-5, 52.1), 7. Michigan State (13-3, 52.3), 8. Delaware (11-3, 53.2), 9. Villanova (13-3, 53.3), 10. Connecticut (13-2, 53.3)

(As of January 19, 2004 from www.NCAA.org)

Home Grown

Freshman guard Tyresa Smith, the 2003 Delaware High School Player of the Year, set a new career-high with a team-high 15 points in the Blue Hens' loss to CAA rival William & Mary on January 9. Against the Tribe, Smith also had a seven steals. She followed that performance with solid play against Hofstra, posting eight points, six rebounds, and eight steals to tie the UD program record for steals in a game. Against La Salle, she came off the bench to add 10 points, nine rebounds, four steals, three assists, and two blocks. Smith also scored in double-figures (10 points) and pulled down seven rebounds in the Hens' win over Loyola. A product of Polytech in Dover, DE, Smith is averaging 7.0 points per game and 3.8 rebounds per game.

Playing with Streaks

Since her debut in the first game of the 2001-02 season, junior tri-captain Tiara Malcom has played in 75 straight games, and the Blue Hens own a 56-19 record with Malcom in the game.

The Defense Gets It Done

Delaware basketball is notorious for its defense. The Blue Hens have held six teams under 50 points this year and hold a 6-0 mark in those games. Last year, Delaware held opponents to 53.5 points a game to lead the CAA in scoring defense. The Hens kept teams under 50 points on 13 occasions in 2002-03 and posted a 12-1 record in those contests. This season, the Blue Hens are allowing an average of 53.2 points per game. In their streak of nine wins, broken by William & Mary on January 9, the Blue Hens allowed a mere 47.4 points per contest.

Games UD Held Opp. Under 50 Pts

Table with 4 columns: Pts, Opponent, Result, Date. Rows: 25 vs Loyola (MD) W 12/14/03, 42 vs Manhattan W 12/22/03, 44 vs St. John's W 12/08/03, 47 vs Brown W 11/29/03, 47 vs La Salle W 12/03/03, 47 vs Hofstra W 1/15/04

More on the Delaware "D"

Delaware leads the CAA in scoring defense in 2003-04 with an average opponent scoring total of 53.2.

Following two back-to-back double-digit losses to William & Mary and Old Dominion, the Blue Hen defense made a statement versus Hofstra, holding the Pride to 15 points in the first half and did not allow a field goal for the first 12 minutes of the contest.

The 25 points that Loyola scored against Delaware on December 14 is the lowest opponent point total in the CAA in the last five years. Delaware held the Greyhounds to just seven points in the first half, which is the third lowest half-time score in all of Division I women's basketball. Only Florida State and Vanderbilt have held teams to less points in a half. The Seminoles and the Commodores held Savannah State to three and six points in the first half, respectively.

Delaware's defense allowed Navy only four points in the first 12 minutes of the first half back on December 5. Delaware held the Mids scoreless for the first 2:30 minutes of the game, as it began the game on a 9-2 run.

Against Manhattan, Delaware held the Jaspers to just three points in the final 7:04 minutes of the second half.

The Hens held the St. John's to 15 points at the half, which was the lowest opponent half-time score -- before the Loyola win on 12/14 -- since December 8, 2001 when the Blue Hens held Centenary to 14 points in the first half.

UNC Wilmington only scored 14 points in the first half vs. UD on January 4, which was then the Seahawk's season-low for in points in a half.

◆ Around the Conference ◆

2003-2004 Standings (Through games of 1/21)

Team	Conference			Overall		
	W	L	PCT	W	L	PCT
Old Dominion.....	4	1	.800	9	6	.664
Hofstra.....	4	1	.800	7	7	.500
Delaware.....	3	2	.600	11	3	.786
George Mason	3	2	.600	8	4	.667
Drexel.....	3	2	.600	6	8	.429
UNC Wilmington	2	3	.400	7	7	.500
James Madison.....	2	3	.400	7	9	.438
William & Mary	2	3	.400	6	8	.429
Va Commonwealth.....	2	3	.400	5	8	.385
Towson.....	0	5	.000	8	6	.517

Team Statistics

(Through games of 1/21)

Scoring Offense:	5th (63.8 ppg)
Scoring Defense:	1st (53.2 ppg)
Scoring Margin:	1st (+10.6)
Free Throw Pct.:	2nd (.709)
Field Goal Pct.:	7th (.399)
Field GoalPct. Defense:	1st (.355)
3-Point Field Goal Pct.:	7th (.284)
3-Point Field Goal Pct. Defense:	2nd (.266)
Rebounding Offense:	1st (41.3)
Rebounding Defense:	2nd (34.6)
Rebounding Margin:	1st (+6.7)
Blocked Shots:	1st (4.64)
Assists:	10th (9.57)
Steals:	T-1st (11.50)
Turnover Margin:	2nd (+1.07)
Assist/TurnoverRatio:	10th (0.45)
Offensive Rebounds:	T-1st (16.93)
Defensive Rebounds:	3rd (25.36)
3-Point Field Goals Made:	10th (2.07)

Individual Statistics

(Through games of 1 /20)

Scoring:	10th, Tiara Malcom (13.3)
	17th, Tiffany Young (11.6)
	T-18th, Julie Sailer (10.9)
Rebounding:	6th, Tiffany Young(7.7)
	T-8th, Tracey Howell (7.2)
Field Goal Pct.:	11th, Tiara Malcom (6.4)
	12th, Tiara Malcom (.446)
Free Throw Pct.:	1th, Tiffany Young (.442)
	4th, Tiffany Young (.803)
	5th, Liz Hayes (.795)
Steals:	13th, Julie Sailer (.720)
	15th, Tiara Malcom (.713)
	T-4th, TyresaSmith (2.21)
Blocked Shots:	3rd, Tiara Malcom (1.50)
	4th, Tracey Howell (1.14)
3 Point FG Pct.:	T-5th, Tyresa Smith (1.00)
	10th, Tiffany Young (0.86)
	13th, Liz Hayes (.346)



Block Party

Scoring defense is not the only category that Delaware is tops in the CAA. The Blue Hens are averaging a league-high 4.64 blocks per game and **Tiara Malcom** (3rd -- 1.5), **Tracey Howell** (4th -- 1.14), **Tyresa Smith** (T-5th -- 1.00), and **Tiffany Young** (10th -- 0.86) all rank in the top ten in the league.

Windex Women

Delaware also leads the CAA in rebounding offense (41.3 Avg./G), rebounding margin (+6.7) and offensive rebounds (16.93). **Tiffany Young** (6th -- 7.7) **Tracey Howell** (8th -- 7.2), and **Tiara Malcom** (11th -- 6.4) are all among the league-leaders in rebounds per game. Nationally, the Blue Hens rank 29th in rebounding margin. Delaware has been out-rebounded only three times this season -- against Richmond (42-48), Hofstra (37-39), and Virginia Commonwealth (31-38). Even in two recent conference losses, the Hens out-rebounded William & Mary, 48-33, and Old Dominion, 40-33.

Bench Boosters

Delaware's bench has provided some clutch plays at key moments this season. Sophomore guard **Amanda Blackstone**, freshman point guard **Alena Koshansky**, sophomore guard **Karleena Tobin**, and then-reserve freshman guard **Tyresa Smith** have all come off the bench at one point to provide a spark for the Blue Hens.

◆ **Alena Koshansky set a career-high in points with 12 versus Hofstra, connecting on all of her shots (3-3 FG, 4-4 FT).** She also scored 10 first-half against Virginia Commonwealth, including hitting 2-3 from behind the three-point line.

◆ **Karleena Tobin saw her first real action of the season against Hofstra, coming off the bench to score a career-high eight points in a career-high 13 minutes.** Tobin shot 4-4 from the floor against the Pride and also added four points versus the VCURams.

◆ **Amanda Blackstone tied her career-high of six points, set against Stony Brook, and set a new career-high with four rebounds in the Hens' 69-47 win over the La Salle.** On November 25, Blackstone played 11 minutes--all in the second-half--scoring six points and grabbing three rebounds against Stony Brook. **Against the Hofstra Pride, Blackstone scored four points, hitting both of her field goals, in just six minutes of action**

◆ **Tyresa Smith's play coming off the bench had been so fierce that it recently earned her place in the starting line up.** In the conference losses to William & Mary and Old Dominion, Smith came off the bench to score in double-digits (15 pts vs. UNCW, 12 pts vs. ODU) to earn a place in the starting line-up. In her first career-start, Smith tied the all-time record for steals in a game (8) against Hofstra on January 15.

The DishFactor

Passing the rock is a necessity in basketball and to the Blue Hens, each assist has an extra significance. In 2001-02, the Blue Hens were a perfect 16-0 when they had more or equal the assist total of their opponent, but just 7-7 when they lost the assist battle. Last season, Delaware was 11-1 when it won the assist battle and 11-8 when it did not. The Hens are now 6-0 when they win or tie the assist battle in 2003-04.

Games Delaware Won/Tied Assist Battle

Opp.....	UD-OppAssists	Results
La Salle.....	11-7.....	W (69-47)
Navy.....	10-9.....	W (69-57)
St. John's	14-11.....	W (59-44)
UNCW	11-9.....	W (57-56)
Hofstra	15-9.....	W (78-47)
VCU.....	10-10	W (66-56)

There's No Place Like Home

Having two home-losses in a season is some what of an anomaly for the Blue Hens. The last time the Hens lost two games at home in the same season dates back to the 1998-99 when they were still in the America East. Despite its two losses this season at home, Delaware's home record is nothing to scoff at. **Since the 1999-00 season, the Blue Hens are 51-5 at the Bob Carpenter Center.** To put that into perspective, Delaware has won over 90% of its home contests over the last four years and over 75% of its home games in the past seven years.

Keeping the Tradition Alive

Over the past four years, the Delaware women's basketball team has recorded **four consecutive 20-win seasons** (21-8 in 1999-00, 26-5 in 2000-01, 23-7 2001-02, & 22-9 in 2002-03). Delaware has amassed 108 wins in the last five years, ranking 32nd among all Division I women's basketball programs for wins (entering the 2003-04 season). In addition to the numerical success, the Blue Hens have advanced to three consecutive post season tournaments, appearing in the NCAA Regionals in 2001 and in the WNIT in 2002 and 2003.

All Signs "Point" To...

Freshman point guard **Liz Hayes**, who made her debut as the Blue Hens' point guard against Richmond, has made an immediate impact for the Blue Hens. After scoring 12 points in the season-opener against the Spiders and adding 10 points against La Salle, **she set a career-high with 17 points against St. John's, shooting 6-9 from the field and 3-4 from long-range.** Hayes is averaging 7.3 ppg, fourth-best on the team. She also leads the team in made three-pointers with 18 (18-52, .333 Pct.), which puts her 10th in made three-pointers in UD program history.

On This DateIn...1990...

Delaware downed then-Towson State (now CAA rival Towson), 65-59, in East Coast Conference action. Delaware finished the 1989-90 season with a 21-9 mark overall (10-4 ECC).

Game Notes ◆ Game 15 ◆ Delaware (11-3, 3-2) vs. George Mason (8-4, 3-2)

~~over for more~~

Hitting the Freebies

Delaware is shooting **70.9 percent from the foul line** this season, ranking second in the CAA. **Liz Hayes, Tiffany Young and Amanda Blackstone** are all shooting over 75% from the charity stripe. Hayes and Young rank in the top ten in the league in free throw percentage. Delaware has connected on 278 of 392 attempts while its opponents have shot just 61.1 percent (143-234) from the line. Delaware averages over 19 points from the foul line per game. Delaware has never shot lower than 59.3 percent from the foul line (vs. ODU) and averages 72.3 % from the charity stripe its in 11 wins this season. The solid shooting is no surprise as Delaware led the CAA in free throw percentage in 2002-03 with 73.4%.

Seeing Double

Junior forward and tri-captain **Tiara Malcom** tallied her first "double-double" of 2003-04 season with 14 points and 11 rebounds in the championship game of Coca-Cola Classic against host Fairfield. Malcom recorded seven "double-doubles" in 2002-03, including a 15 point, 16 rebound (career-high) outing against James Madison on January 30, 2003. A first-team pick in the pre-season CAA media and coaches' poll, Malcom leads the Hens in scoring this year with 13.5 points per game while also averaging 6.6 rebounds.

Transfer Tales--Part I, II & III

This year's squad carries three players with unique playing backgrounds in redshirt sophomore **Arek Deng**, junior **Kristy Gaines** and redshirt junior **Geneva Livingston**.

♦Deng, native of Sudan, is eligible this year after transferring from Maryland. As a Terp, Deng appeared in four games in 2001-02, before a broken ankle ended her season.

♦Gaines also has a Maryland background in her collegiate career. Gaines' story is that of a journey-man. A native of Newman, GA, Gaines began her career at Southern Mississippi in 2000-01 before transferring to Maryland and taking a redshirt year. Gaines, who never saw action at Maryland, then transferred to Hagerstown (MD) Junior College and averaged 16.1 points and 7.8 rebounds per game last season.

♦Livingston comes to Delaware from the University of New Hampshire where she averaged 10.4 ppg as the team's No. 2 scorer. She will sit out the 2003-04 season per NCAA transfer regulations.

A December to Remember

Delaware completed the month of December with a perfect 5-0 record. The Blue Hens made it through the month of November with a 3-1 record, improving on last year's November record of 0-3. In the past two months of December, Delaware has compiled a perfect 10-0 mark.

The Leftovers from 2002-03

Even though the numbers below do not seem very promising, the Blue Hens are used to picking up scoring slack when teammates have left the nest. In the last three seasons, Delaware has lost five 1,000 point scorers. Also, going into the 2002-03 season, the squad had lost over thirty percent of their scoring from 2001-02 and still managed to finish 22-9.

	Returning Statistics			
	02-03 Totals	Return	Lost	%Return
Points	1852	913	939	49.3%
FG Made	636	290	346	45.6%
FG Att	1595	749	846	47.0%
3FG Made	52	21	31	40.4%
3FG Att	188	87	101	46.3%
FT Made	528	312	216	59.1%
FT Att	719	414	305	57.6%
Rebounds	1058	617	441	63.4%
Off Reb	373	235	138	63.0%
Def Reb	685	382	303	55.8%
Assists	343	103	240	30.0%
Turnovers	571	238	333	41.7%
Blocks	95	49	46	51.6%
Steals	320	128	192	40.0%
Minutes	6225	2943	3282	47.3%

It's My Party

Freshman **Alena Koshansky's** 19th birthday has the potential to be extra sweet. If the Hens continue their winning tradition and advance to the conference finals, Delaware could vie for the conference championship on Koshansky's 19th birthday (3/13). **Geneva Livingston** (1/1) and **Arek Deng** (1/13) recently celebrated birthdays. **Tiara Malcom** (1/24) will also have a birthday during the season.

Twin Factor

Experience and excellent credentials may not be the only requirement to be a coach at Delaware. Having a twin in the family may also be a prerequisite. Three out of four members of the coaching staff have a twin connection in their family. Head coach **Tina Martin** and associate head coach **Jeanine Radice** are both twins -- Martin is an identical twin while Radice has a fraternal twin sister. Assistant coach **Tyrone Perry** also has twin fraternal siblings.

Homecoming

Who says you can't go home again? Well, Thomas Wolfe did, but clearly **Carrie Timmins** wasn't listening. The former standout point guard returns to Delaware this year in a new capacity--assistant coach. Timmins, who will earn her bachelor's degree in health and exercise sciences from Delaware in December, averaged 6.4 points last season and ranked among the CAA leaders in assists (91) and steals (28). She also played in 111 games as a Blue Hen (8th all-time). Timmins also joins another fellow Delaware grad and standout player turned assistant coach, **Tyrone Perry**. Perry, in his fifth year coaching at UD, was an assistant with the men's team for two years and is now entering his third season with the women's basketball team.

It Runs in the Family

Center **Arek Deng** is one of eight children, and basketball must run in her family's genes. Her older brother, Ajou, played for the Fairfield basketball team while her younger brother, Luol, a freshman at Duke, is considered one of the nation's best rookies -- if not the best -- in the class of 2003-04. Also, her cousin, Gai, plays for the Fairfield men's basketball team. Gai, a 6'9" center, averaged 12.9 points per game and finished fourth in the nation for blocked shots with 3.8 per game last year.



♦ Updating the Program Records ♦

Career Scoring Leaders

No.	Name	Years	Pts.
1.	Cindy Johnson (G)	1997-2001	1,675
2.	Colleen McNamara (C)	1991-1995	1,560
3.	Debbie Eaves	1986-1990	1,551
4.	Lori Howard	1977-1981	1,469
5.	Danielle Leyfert	1997-2001	1,447
6.	Sharon Wisler	1986-1990	1,420
7.	Meg McDowell	1982-1986	1,236
8.	Shanda Piggott	1994-1998	1,223
9.	Lisa Cano	1984-1988	1,188
10.	Christina Rible	1998-2002	1,181
11.	Jennifer Riley	1989-1992	1,165
12.	Megan Dellegrotti	1998-2002	1,112
13.	Denise Wojciech	1992-1996	1,091
14.	Sharon Howett	1974-1978	1,089
15.	Donna Werner	1980-1984	1,088
16.	Merel van Zanten	1990-1994	1,049
17.	Allison Trapp	2000- 2003	1,030
18.	Molly Larkin	1989-1993	1,017
19.	Cynthia Phipps	1980-1984	976
20.	Kathie Malloy	1980-1984	884
21.	Sarah Gause	1983-1986	880
22.	Bev Santee	1991-1995	862
23.	Sue Whitfield	1984-1988	851
24.	Keisha McFadgion	1995-1998	847
25.	Robin Stoffel	1986-1990	768
26.	Linda Cyborski	1988-1992	764
27.	TIARAMALCOM	2001-PRESENT	772
28.	JULIE SAILER	2001-PRESENT	758
29.	Linny Price	1979-1984	724
30.	Karen Conlin	1974-1978	716

Field Goal Percentage (Min. 250 att.)

No.	Name	Years	Pct.
1.	Donna Werner (F)	1980-84	.493
2.	Kathie Malloy	1980-84	.488
3.	Daphne Joy	1986-90	.487
4.	Sharon Wisler	1986-90	.486
5.	Colleen McNamara	1991-95	.483
6.	Marian Moorer	1984-87	.476
7.	Sarah Gause	1983-86	.473
8.	Debbie Eaves	1986-90	.469
9.	TIARA MALCOM	2001-PRESENT	.467
10.	Jen Riley	1989-92	.463

Three-Point Field Goals

No.	Name	Years	FG
1.	Megan Dellegrotti (G)	1998-02	154
2.	Linda Cyborski	1988-92	98
3.	Bev Santee	1991-95	91
4.	Jen Lipinski	1989-93	76
5.	Keisha McFadgion	1995-98	64
6.	Lindsay Davis	1998-02	63
7.	Kristen Stout	1995-98	51
8.	JULIE SAILER	2001-PRESENT	36
9.	Bridget McCarthy	1987-91	34
10.	LIZ HAYES	2003-PRESENT	18

Career Rebounding Leaders

No.	Name	Years	Reb.
1.	Colleen McNamara (C)	1991-95	1,063
2.	Sharon Howett	1974-78	1,009
3.	Debbie Eaves (F)	1986-90	992
4.	Christina Rible	1998-02	975
5.	Sharon Wisler	1986-90	875
6.	Donna Werner	1980-84	873
7.	Shanda Piggott	1994-98	862
8.	Lori Howard	1977-81	801
9.	Meg McDowell	1982-86	748
10.	Kathie Malloy	1980-84	691
11.	Danielle Leyfert	1997-2001	645
12.	Christine Cole	1999-2003	623
13.	Jennifer Riley	1989-92	582
14.	Denise Wojciech	1992-96	564
15.	Cindy Johnson	1997-2001	541
16.	Sarah Gause	1983-86	530
17.	Merel van Zanten	1990-94	509
18.	Molly Larkin	1989-93	499
19.	Lindsay Davis	1998-02	484
20.	TIARAMALCOM	2001- PRESENT	479
21.	Robin Stoffel	1986-90	474
22.	Lisa Cano	1984-88	445
23.	Jackie Porac	1995-1998	443
24.	Mary Wisniewski	1972-76	405
25.	TRACEY HOWELL	2000-PRESENT	414

Free Throw Percentage (Min. 80 Attempts)

No.	Name	Years	Pct.
1.	Linda Cyborski (G)	1988-92	.852
2.	Megan Dellegrotti	1998-02	.839
3.	Julie Sailer	2001-present	.811
4.	Carolyn Hartsky	1983-87	.807
5.	Jennifer Riley	1989-92	.795
6.	Allison Trapp	1999-03	.780
7.	Jen Lipinski	1989-93	.772
8.	Tiara Malcom	2001-present	.763
9.	Linda Malouf	1985-89	.761
	Lindsay Davis	1998-02	.761

Blocked Shots

No.	Name	Years	Blocks
1.	Colleen McNamara (C)	1991-95	197
2.	Debbie Eaves	1986-90	177
3.	Paula Polyanski	1983-86	155
4.	Sarah Gause	1983-86	115
5.	Christine Cole	1999-03	108
6.	Suzanne Street	1997-00	79
7.	Merel van Zanten	1990-94	77
8.	TIARAMALCOM	2001-PRESENT	60
9.	TRACEY HOWELL	2000-PRESENT	53
10.	Cheryl Gittings	1978-82	44

◆ Season & Career Highs ◆

#4 ~ Liz Hayes

2003-04 Season Highs:
Points: 17 vs. St. John's, 12/8
Rebounds: 3, three times
Assists: 3, three times
Steals: 4 vs. Fairfield, 11/30
Blocks: n/a
FTAtt.: 6 vs. Loyola (MD), 12/7
FT Made: 6 vs. Loyola (MD), 12/7
FG Att.: 9, twice
FG Made: 6 vs. St. John's, 12/8
Minutes: 35 vs. Richmond, 11/22

#25 ~ Tiffany Young

2003-04 Season Highs	Career Highs:
Points: 21 vs. Manhattan, 12/22	same
Rebounds: 14 vs. William & Mary, 1/9	same
Assists: 2, twice	same
Steals: 3 vs. Manhattan, 12/22	same
Blocks: 3 vs. Virginia Commonwealth, 1/18	same
FTAtt.: 14 vs. Manhattan, 12/22	same
FT Made: 11 vs. Manhattan, 12/22	same
FG Att.: 13, twice	same
FG Made: 8 vs. Fairfield, 11/30	same
Minutes: 33 vs. Fairfield, 11/30	same

#12 ~ Alena Koshansky

2003-04 Season Highs:
Points: 12 vs. Hofstra, 1/15
Rebounds: 3, twice
Assists: 3 vs. Stony Brook, 11/25
Steals: 5 vs. Hofstra, 1/15
Blocks: n/a
FTAtt.: 4 vs. Hofstra, 1/15
FT Made: 4 vs. Hofstra, 1/15
FG Att.: 7 vs. Stony Brook, 11/25
FG Made: 3 vs. Hofstra, 1/15
Minutes: 24 vs. Stony Brook, 11/25

#31 ~ Kristy Gaines

2003-04 Season Highs
Points: 7 vs. Richmond, 11/21
Rebounds: 8 vs. Richmond, 11/21
Assists: n/a
Steals: n/a
Blocks: n/a
FTAtt.: n/a
FT Made: n/a
FG Att.: 7 vs. Richmond, 11/22
FG Made: 3 vs. Richmond, 11/22
Minutes: 17 vs. Richmond, 11/22

#15 ~ Julie Sailer

2003-04 Season Highs	Career Highs:
Points: 16, twice	21, twice
Rebounds: 8 vs. Fairfield, 11/30	12 at UNCW (1/4/02)
Assists: 3, twice	4, twice
Steals: 4 vs. Navy, 12/5	3, three times
Blocks: n/a	1, five times
FTAtt.: 10, three times	12, twice
FT Made: 7, three times	10, twice
FG Att.: 14, twice	16 vs. Bucknell (12/8/02)
FG Made: 6 vs. Old Dominion, 1/11	7, three times
Minutes: 43 vs. Richmond, 11/22	

#32 ~ Amanda Blackstone

2003-04 Season	Career Highs
Points: 6, twice	same
Rebounds: 4 vs. LaSalle, 12/3	same
Assists: 3 vs. Fairfield, 11/30	same
Steals: 1, four times	2 at Richmond (11/22/02)
Blocks: 1 at UNCW, 1/4	1, twice
FTAtt.: 4, twice	same
FT Made: 3, twice	same
FG Att.: 5, twice	same
FG Made: 2 vs. Stony Brook, 11/25	same
Minutes: 19 vs. Fairfield, 11/30	same

#22 ~ Karleena Tobin

2003-04 Season Highs	Career Highs:
Points: 8 vs. Hofstra, 1/15	same
Assists: 1, twice	same
Rebounds: 2 vs. Hofstra, 1/15	same
Steals: 2 vs. Hofstra, 1/15	same
Blocks: n/a	n/a
FTAtt.: n/a	n/a
FT Made: n/a	n/a
FG Att.: 4 vs. Hofstra, 1/15	same
FG Made: 4 vs. Hofstra, 1/15	same
Minutes: 13 vs. Hofstra, 1/15	same

#33 ~ Tiara Malcom

2003-04 Season Highs	Career Highs
Points: 24 vs. Richmond, 11/21	same
Rebounds: 11 vs. Fairfield, 11/30	16 vs. JMU (1/30/03)
Assists: 3, four times	4 at Drexel (1/23/03)
Steals: 3, three times	7 vs. Towson (3/6/03)
Blocks: 3, five times	5 at Richmond (11/22/02)
FTAtt.: 18 vs. Richmond, 11/22	same
FT Made: 12 vs. Richmond, 11/22	13, vs. Old Dominion (2/2/03)
FG Att.: 15, twice	same
FG Made: 6, three times	10 at Saint Joseph's (3/19/03)
Minutes: 43 vs. Richmond, 11/22	same

#23 ~ Tyresa Smith

2003-04 Season Highs:
Points: 15 vs. William & Mary, 1/9
Rebounds: 9 vs. LaSalle, 12/3
Assists: 4 vs. Hofstra, 1/15
Steals: 8 vs. Hofstra, 1/15
Blocks: 3 vs. Loyola (MD) 12/14
FTAtt.: 8 vs. Virginia Commonwealth, 1/18
FT Made: 6 vs. Old Dominion, 1/11
FG Att.: 13, twice
FG Made: 6 vs. William & Mary, 1/9
Minutes: 27 vs. Old Dominion, 1/11

#40 ~ Arek Deng

2003-04 Season Highs:
Points: 2 at Loyola, 12/14
Rebounds: 4 vs. Brown, 11/29
Assists: 1 vs. Navy, 12/5
Steals: 2 vs. Brown, 11/29
Blocks: 1 vs. UNC Wilmington, 1/4
FTAtt.: 2 vs. Brown, 11/29
FT Made: 1 vs. Brown, 11/29
FG Att.: 1, three times
FG Made: 1 vs. Loyola, 12/14
Minutes: 9 vs. vs. UNC Wilmington, 1/4

#24 ~ Jayne Boyer

2003-04 Season Highs	Career Highs:
Points: n/a	4, twice
Rebounds: 1, twice	3, twice
Assists: 1 vs. LaSalle, 12/3	1, twice
Steals: n/a	2, twice
Blocks: 1 vs. LaSalle, 12/3	1, twice
FTAtt.: n/a	5 vs. Boston University (2/8/01)
FT Made: n/a	4 vs. American (12/17/00)
FG Att.: n/a	3 vs. Hofstra (12/29/01)
FG Made: n/a	1, four times
Minutes: 1, three times	14 at George Mason (12/6/00)

#50 ~ Tracey Howell

2003-04 Season Highs	Career Highs:
Points: 10 vs. William & Mary, 1/9	12 vs. W&M (1/26/03)
Rebounds: 11, twice	same
Assists: 4, twice	6 vs. Marist (12/23/02)
Steals: 4 vs. Stony Brook, 11/25	4, twice
Blocks: 3 vs. Stony Brook, 11/25	3, twice
FTAtt.: 6 vs. Manhattan, 12/22	10 vs. W&M (1/26/03)
FT Made: 3, five times	6 vs. W&M (1/26/03)
FG Att.: 7 vs. St. John's, 12/8	9, twice
FG Made: 4, twice	5, twice
Minutes: 38 vs. UNC Wilmington, 1/4	same

◆ **Miscellaneous Stats** ◆

Scoring Trends

Led in scoring* '03-04 (w-l) Career (w-l) Consec.

Tiara Malcom 5 (4-1) 14 (10-4)

Tiffany Young 4 (4-0) 4 (4-0) 1

Julie Sailer 3 (2-1) 13 (7-6)

Liz Hayes 2 (2-0) 2 (2-0) 1

Tyresa Smith 1 (0-1) 1 (0-1)

**includes games tied for team-high*

Double-digit points '03-04 (w-l) Career (w-l) Consec.

Tiffany Young 10 (7-3) 10 (7-3) 1

Tiara Malcom 10 (8-2) 44 (33-11) 3

Julie Sailer 8 (6-2) 41 (33-8) 3

Liz Hayes 5 (4-1) 5 (4-1) 1

Tyresa Smith 4 (2-2) 4 (2-2)

Tracey Howell 1 (0-1) 4 (3-1)

Alena Koshansky 2 (2-0) 2 (2-0) 2

20-plus points '03-04 (w-l) Career (w-l) Consec.

Tiara Malcom 3 (2-1) 5 (3-2)

Tiffany Young 2 (2-0) 2 (2-0)

Other Streaks

Consecutive Games Played

Tiara Malcom 75 (first action 11/23/01)

Tracey Howell 56 (DNP1/20/02)

Julie Sailer 43 (DNP 11/30/02)

Tiffany Young 42 (DNP12/4/02)

Liz Hayes 14 (first start 11/22/03)

Alena Koshansky 14 (first action 11/22/03)

Tyresa Smith 14 (first action 11/22/03)

Kristy Gaines 2 (DNP1/11/04)

Karleena Tobin 2 (DNP1/11/04)

Consecutive Games Started

Tiara Malcom 45

Julie Sailer 43

Tracey Howell 14

Liz Hayes 14

Tyresa Smith 2

Second Chance Points

Game-by-Game UD-Opp Game Result

Richmond^ 12-13 78-80 OT (L)

at Stony Brook 15-6 67-58 (W)

Brown 12-17 60-47 (W)

Fairfield^ 6-7 61-51 OT (W)

La Salle 18-14 69-47 (W)

Navy 23-9 69-57 (W)

at St. John's 9-7 59-44 (W)

at Loyola (MD) 20-6 54-25 (W)

Manhattan 12-9 63-42 (W)

at UNC Wilmington 16-5 57-56 (W)

at William & Mary 12-6 56-68 (L)

Old Dominion 14-6 56-67 (L)

Hofstra 7-16 78-47 (W)

VCU 8-11 66-56 (W)

at George Mason

at Drexel

Towson

at James Madison

at Va. Commonwealth

Wilm. & Mary

James Madison

at Hofstra

at Old Dominion

UNC Wilmington

Drexel

at Towson

George Mason

ALLTELCAA Tourn.

Totals: 184-129

Rebounding Trends

Led in Rebounds* '03-04 Career.. Consec.

Tracey Howell 7 14

Tiara Malcom 3 23

Tiffany Young 4 4 1

Julie Sailer 1 4

Tyresa Smith 1 1

**includes games tied for team-high*

Double-digit rebound '03-04 Career Consec.

Tracey Howell 3 5

Tiffany Young 2 2 1

Tiara Malcom 1 11

Double-Doubles '03-04 Career.. Consec.

Tiffany Young 2 2 1

Tiara Malcom 1 9

Win/Loss Margins

Points Margin Wins Losses

1 1

2 1

3

4

5

6

7

8

9 1

10 2

11-15 3 2

16-19 1

20+ 4

Single Game Superlatives

Largest Delaware Lead:
33, twice

Largest Delaware Deficit:
21 vs. Old Dominion, 37-58, (10:07, 2nd Half)

Largest Delaware Lead in a Loss:
14, vs. Richmond, 34-20 (2:17, 1st Half)

Largest Delaware Deficit in a Win:
7, twice

Largest Delaware Halftime Lead:
27, vs. Hofstra (42-15) (1/15/04)

Largest Delaware Halftime Deficit:
17, vs. Old Dominion (37-20) (1/11/04)

Largest Delaware Win:
31, vs. vs. Hofstra, 78-47 (1/15/04)

Largest Delaware Loss:
12, vs. William & Mary, 56-68 (1/9/04)

Best Delaware FG%:
52.0 vs. vs. Hofstra (1/15/04)

Worst Delaware FG%:
24.6 vs. Brown

Best Opponent FG%:
51.9 by Old Dominion (1/11/04)

Worst Opponent FG%:
20.0 vs. Loyola (MD)

Best Delaware FT%:
84.2 vs. Fairfield

Worst Delaware FT%:
59.3 vs. Old Dominion (16-27) (1/11/04)

Least Points by Delaware in First Half:
19 vs. UNC Wilmington (1/4/04)

Most Points by Delaware in First Half:
42 vs. Hofstra

Least Points an Opponent in First Half:
7 by. Loyola (MD)

Most Points by Opponent in First Half:
38 by William & Mary (1/9/04)

Least Points by Delaware in Second Half:
22 vs. St. John's

Most Points by Delaware in Second Half:
41 vs. Navy

Least Points an Opponent in Second Half:
18 by Loyola (MD)

Most Points by Opponent in Second Half:
42 by UNC Wilmington (1/4/04)

FT Shooting in Final 2:00

Game-by-Game FT-FTA Game Result

Richmond^ 5-6 78-80 OT (L)

at Stony Brook 4-4 67-58 (W)

Brown 4-7 60-47 (W)

Fairfield^ 8-10 61-51 OT (W)

La Salle 0-0 69-47 (W)

Navy 1-2 69-57 (W)

at St. John's 0-0 59-44 (W)

at Loyola (MD) 0-0 54-25 (W)

Manhattan 3-4 63-42 (W)

at UNC Wilmington 7-11 57-56 (W)

at William & Mary 0-1 56-68 (L)

Old Dominion 3-4 56-57 (L)

Hofstra 0-0 78-47 (W)

VCU 2-6 66-56 (W)

at George Mason

at Drexel

Towson

at James Madison

at Va. Commonwealth

Wilm. & Mary

James Madison

at Hofstra

at Old Dominion

UNC Wilmington

Drexel

at Towson

George Mason

ALLTELCAA Tourn.

^includes overtime

Totals: 37-55 (67.3%)

Bench Scoring

Game-by-Game UD-Opp Game Result

Richmond 10-18 78-80 OT (L)

at Stony Brook 15-20 67-58 (W)

Brown 9-13 60-47 (W)

Fairfield 4-20 61-51 OT (W)

La Salle 24-11 69-47 (W)

Navy 17-16 69-57 (W)

at St. John's 4-5 59-44 (W)

at Loyola (MD) 18-6 54-25 (W)

Manhattan 11-5 63-42 (W)

at UNC Wilmington 8-16 57-56 (W)

at William & Mary 16-20 56-68 (L)

Old Dominion 14-9 56-67 (L)

Hofstra 32-24 78-47 (W)

VCU 26-10 66-56 (W)

at George Mason

at Drexel

Towson

at James Madison

at Va. Commonwealth

Wilm. & Mary

James Madison

at Hofstra

at Old Dominion

UNC Wilmington

Drexel

at Towson

George Mason

ALLTELCAA Tourn.

Totals: 208-191

Game Notes ◆ Game 15 ◆ Delaware (11-3, 3-2) vs. George Mason (8-4, 3-2)

◆ Radio & TV Chart ◆

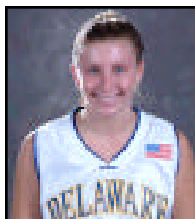
#4

Liz Hayes

Fr. ♦ Guard ♦ 5-7
Easton, PA

PPG ___ RPG ___

APG ___ Misc. ___



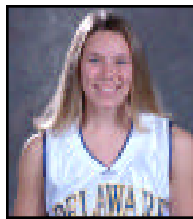
#12

Alena Koshansky

Fr. ♦ Guard ♦ 5-8
Fairfax, VA

PPG ___ RPG ___

APG ___ Misc. ___



#14

Jackie Gordon

Jr. ♦ Guard ♦ 5-3
Lower Gwynedd, PA

PPG ___ RPG ___

APG ___ Misc. ___



#15

Julie Sailer

Jr. ♦ Guard ♦ 5-11
Washington Crossing,
PA

PPG ___ RPG ___

APG ___ Misc. ___



#22

Karleena Tobin

So. ♦ Guard ♦ 5-8
Baltimore, MD

PPG ___ RPG ___

APG ___ Misc. ___



#23

Tyresa Smith

Fr. ♦ Guard ♦ 5-10
Dover, DE

PPG ___ RPG ___

APG ___ Misc. ___



#24

Jayne Boyer

Sr. ♦ Forward ♦ 6-2
Lancaster, PA

PPG ___ RPG ___

APG ___ Misc. ___



#25

Tiffany Young

Jr. ♦ Forward ♦ 6-2
Fairfax, VA

PPG ___ RPG ___

APG ___ Misc. ___



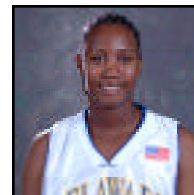
#31

Kristy Gaines

Jr. ♦ Center ♦ 6-1
Newman, GA

PPG ___ RPG ___

APG ___ Misc. ___



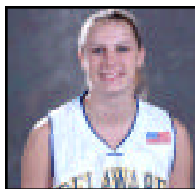
#32

Amanda Blackstone

So. ♦ Guard ♦ 6-0
Schenectady, NY

PPG ___ RPG ___

APG ___ Misc. ___



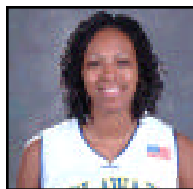
#33

Tiara Malcom

Jr. ♦ Forward ♦ 6-1
Wilmington, DE

PPG ___ RPG ___

APG ___ Misc. ___



#40

Arek Deng

So.-r ♦ Center ♦ 6-4
London, England

PPG ___ RPG ___

APG ___ Misc. ___



#50

Tracey Howell

Sr. ♦ G/F ♦ 6-0
Newark, DE

PPG ___ RPG ___

APG ___ Misc. ___



*Head
Coach*

Tina Martin

8th Season at
Delaware
(Lock Haven '86)

