

◆ The Last Time ◆

UDplayed overtime...
1/15/2004 vs. Drexel (W 58-57)

UD played double-overtime...
1/20/1997 at Drexel (L69-73)

UDscored 100 points...
2/27/1981 vs. Temple (101-96 OT)

UD allowed 100 points...
2/13/1997 vs. Maine (54-102)

UD was held under 40 points...
2/20/2003 at George Mason (L36-47)

UD held opponent under 40 points...
12/14/2003 vs. Loyola (MD) (W 54-25)

UD made five 3-pt FGs...
5-15 vs. George Mason, 1/22/2004

An opponent made five 3-pt FGs...
6-17, James Madison, 2/12/2004

A Blue Hen scored 20 points...
Tiara Malcom (21) vs. UNCW, 1/4/2003

An opponent scored 20 points...
Jody LeRose (20), James Madison, 2/1/2004

A Blue Hen scored 25 points...
Allison Trapp (28) at ODU, 3/15/2003
(CAAC Championship)

An opponent scored 25 points...
Kyle DeHaven (25), William & Mary, 2/8/2004

A Blue Hen scored 30 points...
Tiara Malcom (31), vs. George Mason, 1/23/2004

An opponent scored 30 points...
Cyndy Wilks (30), Virginia Commonwealth,
1/18/2004

A Blue Hen grabbed 10 rebounds...
Tracey Howell (12) vs. William & Mary, 2/8/2004

An opponent grabbed 10 rebounds...
Meredith Alexis (13), James Madison, 2/1/2004

A Blue Hen grabbed 15 rebounds...
Tiara Malcom (16) at JMU, 1/30/2003

An opponent grabbed 15 rebounds...
Tracy Morgan (16), UNCW, 1/4/2002

A Blue Hen had 10 assists...
Christine Koren (10) at Lafayette, 11/19/1999

An opponent had 10 assists...
Lauren Hall-Gregory (10), Hofstra, 2/2/2001

A Blue Hen had 5 blocks...
Tiara Malcom (5) vs. Towson, 1/29/2004

An opponent had 5 blocks...
Denae Dobbins (6), James Madison, 2/1/2004

A Blue Hen had 5 steals...
Tyresa Smith (5) vs. George Mason, 1/23/2004

An opponent had 5 steals...
Catherine Scanlon (5) Drexel, 1/25/2004

A Blue Hen had a double-double...
Tracey Howell, (12 pts, 13 rbs) vs.
James Madison, 2/1/2004

An opponent had a double-double...
Meredith Alexis, (10 pts, 13 rbs), James Madison
2/1/2004



◆ Quick Shots ◆

◆ Delaware enters the 41st all-time meeting with Hofstra in the midst of a four-game losing streak and has not won in the month of February. The Blue Hens, who had not lost four consecutive conference games since February of 1998, suffered their worst loss of the season to James Madison on 2/1 (84-57), followed by losses to Virginia Commonwealth on 2/5 (81-70), William & Mary on 2/8 (55-48) and to James Madison on 2/12 (62-61).

◆ In the previous three seasons, Delaware has only lost seven total conference games (17-1 in 2000-01, 15-3 in 2000-02, 15-3 in 2002-03).

◆ The Hens suffered its worst loss of the season, 84-57, in their first meeting with the Dukes of James Madison and also lost their closest contest of the season to the Dukes, 62-61, on February 12 on a buzzer-beating put-back by James Madison's Shirley McCall.

◆ With the loss to William & Mary on Sunday and the loss to James Madison on Thursday, the Hens were swept by two different conference opponents for the first since 1999, when they were swept by Drexel and Maine in America East play. Last year, the Hens were not swept by any conference opponent in the regular season.

◆ When the Hens last met the Pride on January 15, their 78-47 victory, the largest winning margin of the 2003-04 season, snapped a two-game losing streak for Delaware.

◆ Also in these game notes: **Tiara Malcom's** continues solid play...how Hofstra and Delaware stack up in the conference...**Tracey Howell's** first career double-double...**Liz Hayes** and her three-point shooting...and more...

◆ In Delaware's Corner ◆



Tina Martin, Head Coach...Eighth season at University of Delaware...compiled a 136-88 record at the helm of the Hens' basketball program becoming, the fastest UD basketball coach (men's or women's) to reach 100 career wins...has led the Blue Hens to four-straight 20 win seasons and three consecutive post season appearances...spent nine seasons at Seton Hall as an assistant coach in a program that made back-to-back NCAA tournament appearances in 1994 and 1995, advancing to the Sweet 16 in 1994...was a two-time Division II All-American at Lock Haven University, a four-time Pennsylvania State Athletic Conference All-Star, and two-time league Player of the Year who finished her career as the PSAC's all-time leading scorer with 2,157 career points.

◆ Blue Hens On The Air ◆

Today's Game

Hofstra will be broadcasting today's game on the Hofstra Athletic WebChannel (HAWC) (www.hofstra.edu/sports).

The Tina Martin Show

The Tina Martin Show airs each Monday from 6:30-7 p.m. on The Ticket 1290 AM and The River 94.7 FM (RealAudio links are available at www.udel.edu/sportsinfo/womens_basketball). Each Monday, the Tina Martin Show will be broadcast from the legendary Deer Park Tavern on Main Street in downtown Newark. Coach Martin is joined by the voice of the Blue Hens, Mike Corey, for a review of the past week's game, a preview of upcoming action, and a series of questions from the restaurant audience and listeners via call-in.

Radio Coverage

For the fifth straight year, the Blue Hen radio network's flagship station is The Ticket 1290 AM. Also on the network are WDOV-AM 1410 (Dover) and WTGM-AM 960 (Salisbury). The majority of the home Blue Hen women's basketball action will be available via the Blue Hen radio network. For more detailed listings, see the Delaware Women's Basketball home page (www.udel.edu/sportsinfo/womens_basketball). In addition, many UDBasketball games are also broadcast on the UD student station, WVUD-FM 91.3, and WVUD2, the station's internet radio network. Real Audio links for both broadcasts are available through UD's athletics website.

◆ Pronunciation Guide ◆

Don't worry, you're not the only one who can't say Amanda Blackstone's home town (Sku-neck-ta-dee) or her high school (MO-nass-hen). So, here is the rest of the "tough ones" of the 2003-04 Blue Hens, all sounded out.

- ◆ #12 Alena (Ah - LAY - nuh) Koshansky (KUH - SHAN - ski)
- ◆ #23 Tyresa (TIE - REE - suh) Smith
- ◆ #33 Tiara (TEE - AIR - uh) Malcom
- ◆ #40 Arek (AH - WRECK) Deng
- ◆ Asst. Head Coach Jeanine Radice (Ruh - DEESE)

10

Consecutive double-digit scoring games by **Tiara Malcom**

82

Consecutive contests **Tiara Malcom** has played in

5

Number of foul shots Delaware missed in the final 5 minutes of their 62-61 loss to JMU

10

Amanda Blackstone's new career-high in points set on 2/5

6

Games UD has held opponents under 50 total points in '03-04

Hens By the Numbers

	'03-04.	'02-'03.	Under Martin
Home	6-4	11-1	72-24
Away	6-4	8-8	52-53
Neutral	1-0	3-0	12-11
vs. Conf. at Home	3-3	8-1	47-19
vs. Conf. on Road	2-4	7-3	33-36
vs. Conf. (Neutral)	0-0	2-0	7-2
in Overtime	2-1	1-0	8-2
Scoring 70+ points	1-2	6-0	74-13
Scoring 70 points	12-6	16-9	62-75
Allowing 70+ points	0-4	0-1	12-53
Allowing 70 points	13-4	22-8	124-35
Leading at Halftime	11-3	18-2	108-20
Trailing at Halftime	2-5	4-6	25-64
Tied at Halftime	0-0	0-1	3-4
Shoot 50%+ FG	1-1	4-0	16-3
Shoot 50% FG	12-7	18-9	120-85
Opp. shoots 50%+ FG	0-3	1-1	2-26
Opp. shoots 50% FG	13-5	21-8	134-62
Shoot 70%+ FT	7-2	15-5	89-33
Shoot 70% FT	6-6	7-4	47-55
Opp. shoots 70%+ FT	6-3	8-5	62-36
Opp. shoots 70% FT	7-5	14-4	74-54
More or = turnovers*	6-6	8-5	33-31
Less turnovers*	7-2	14-4	85-16
More or = rebounds	11-4	17-5	110-45
Less rebounds	2-4	5-4	26-43
More or = Assists	7-2	11-1	66-11
Less Assists	6-6	11-8	70-76
At night	8-6	12-5	76-54
During the day	5-2	10-4	60-34
In November	3-1	0-3	17-13
In December	5-0	5-0	32-15
In January	5-3	7-2	41-30
In February	0-4	6-2	34-21
In March	0-0	4-2	12-9
Sunday	5-2	9-2	32-16
Monday	2-1	2-0	12-3
Tuesday	1-0	0-3	6-9
Wednesday	1-0	1-0	12-7
Thursday	2-2	8-1	29-16
Friday	1-2	2-1	16-17
Saturday	1-0	0-2	29-19
vs. Atlantic 10	1-1	0-3	2-7
vs. America East	1-0	0-0	55-44
vs. Atlantic Coast	0-0	0-0	0-2
vs. Big East	1-0	1-0	2-0
vs. Big 12	0-0	0-0	0-1
vs. Big South	0-0	0-0	1-0
vs. Big West	0-0	0-0	1-2
vs. CAA	5-7	17-4	40-17
vs. Conference USA	0-0	1-0	1-1
vs. Independents	0-0	0-0	1-0
vs. Ivy League	1-0	1-1	9-3
vs. MAAC	3-0	1-1	7-2
vs. MEAC	0-0	0-0	6-2
vs. Missouri Valley	0-0	0-0	0-1
vs. Mountain West	0-0	0-0	0-1
vs. Northeast	0-0	0-0	2-0
vs. Patriot League	1-0	1-0	6-3
vs. Southern	0-0	0-0	0-1
vs. Southeastern	0-0	0-0	0-1
under Tina Martin	13-8	22-9	136-88

*records incomplete before 1998



Face Off

Here's how Delaware and Hofstra have fared in conference action.

Opp.	UD's Result	Hofstra's Result
UNCW	W 57-56	W 79-68
VCU	W 66-56, L70-81	W 75-70
ODU	L 56-67	W 74-72, L62-105
JMU	L 57-84, 61-62	W 48-37
GMU	L 64-71	L 64-92
Drexel	W 58-57 (OT)	W 70-57
Towson	W 65-52	W 69-51, W 66-61
W&M	L 56-68, L48-55	W 76-67, W 87-66

All In a Week's Work

Junior forward **Tiara Malcom** was recognized on Tuesday, January 27 as the CAA Player of the Week after posting consecutive double-doubles against George Mason and Drexel. Against the Patriots, she scored a career-high 31 points and grabbed a game-high 11 rebounds. She became just the 10th Blue Hen player to break the 30 point marker in a single game. She continued her solid play this week with her third straight double-double against Towson on January 29, scoring 11 points and grabbing 11 rebounds in the Blue Hens' victory. Malcom has recorded 12 career double-doubles. Also, since her debut in the first game of the 2001-02 season, Malcom has played in 82 straight games, and the Blue Hens own a 58-24 record with Malcom in the game.

Tiara Malcom's Career Double-Doubles

Date	Pts	Rbs	Opp.	Result
1/29/04	11	11	Towson	W 65-52
1/25/04	16	11	Drexel	W 58-57 OT
1/22/04	31	11	GMU	L 64-71
11/30/03	14	11	Fairfield	W 61-51 OT
3/19/03	21	14	Saint Joseph's	L 47-65
3/2/03	13	13	JMU	W 75-64
2/20/03	14	12	GMU	L 36-47
1/30/03	15	16	JMU	W 60-49
1/12/03	11	11	UNCW	L 49-56
12/8/02	18	13	Bucknell	W 71-45
12/4/02	10	10	St. John's	W 63-47
12/18/01	10	12	La Salle	W 83-66

And She's Not Alone

Tiara Malcom is not the only Hen to have posted a double-double this season. Junior forward **Tiffany Young** & senior guard **Tracey Howell** both posted their first career double-doubles this year. Young has recorded two double-doubles, against William & Mary (1/9) and Virginia Commonwealth (1/18), while Howell tallied her first such performance against James Madison (2/1) with 12 points and 13 rebounds.

The Defense Gets It Done

Delaware basketball is notorious for its defense. **The Blue Hens have held six teams under 50 points this year and hold a 6-0 mark in those games.** Last year, Delaware held opponents to 53.5 points a game to lead the CAA in scoring defense. The Hens kept teams under 50 points on 13 occasions in 2002-03 and posted a 12-1 record in those contests. This season, the Blue Hens are allowing an average of 57.4 points per game. **In all of Delaware's 13 wins, the Hens have kept opponents under 60 points, with their opponents averaging 49.1 ppg.**

Games UD Held Opp. Under 50 Pts

Pts	Opponent	Result	Date
25	Loyola (MD)	W	12/14/03
42	Manhattan	W	12/22/03
44	St. John's	W	12/08/03
47	Brown	W	11/29/03
47	La Salle	W	12/03/03
47	Hofstra	W	1/15/04

Home Grown

Freshman guard **Tyresa Smith** (Dover, DE/Polytech), the 2003 Delaware High School Player of the Year, set a new career-high with a team-high 15 points in the Blue Hens' loss to CAA rival William & Mary on January 9. Against the Tribe, Smith also had seven steals. She followed that performance with solid play against Hofstra, posting eight points, six rebounds, and eight steals to tie the UD program record for steals in a game. Against La Salle, she came off the bench to add 10 points, nine rebounds, four steals, three assists, and two blocks. Smith also scored in double-figures (10 points) and pulled down seven rebounds in the Hens' win over Loyola.

Big Shots

Freshman point guard **Liz Hayes** has been hitting the important shots this year for the Blue Hens. On two occasions (Richmond & Drexel), Hayes has hit a three-pointer at the end of regulation to send the contest to an extra session. Hayes has also scored in double-figures on seven occasions this season, including a career-high 17 points against St. John's, shooting 6-9 from the field and 3-4 from long-range. Hayes is averaging 7.8 ppg, fourth-best on the team. She also leads the team in made three-pointers with 27 (27-82, .329 pct.), which puts her 10th in made three-pointers in UD program history.

◆ *Around the Conference* ◆

2003-2004 Standings
(Through games of 2/13)

Team.....	Conference			Overall		
	W	L	PCT	W	L	PCT
Old Dominion	11	1	.917	16	6	.727
Hofstra.....	9	3	.750	12	9	.571
George Mason.....	7	5	.583	12	7	.632
UNC Wilmington....	7	5	.583	12	9	.571
VCU.....	6	6	.500	9	11	.450
Drexel.....	5	6	.455	8	12	.400
Delaware.....	5	7	.417	13	8	.619
William & Mary	4	7	.364	8	12	.400
James Madison.....	4	8	.333	9	14	.391
Towson.....	1	11	.083	9	12	.429

Team Statistics

(Through games of 2/13, NCAAStats as of 2/9)

Category:	CAA.....	NCAA
Scoring Offense:	8th (62.7 ppg).....	184th
Scoring Defense:	1st (57.5 ppg)	29th
Scoring Margin:	3rd (+5.2).....	77th
Free Throw Pct.:	2nd (.700)	109th
FG Pct.:	8th (.397).....	203th
FGPct. Defense:	3rd (.385).....	68nd
3-Point FG Pct.:	10th (.286).....	N/A
3-Point FG Pct. Def.:	4th (.295).....	N/A
Rebounding Off.:	3rd (38.9).....	N/A
Rebounding Def.:	1st (34.0)	N/A
Rebounding Margin:	1st (+4.9)	35th
Blocked Shots:	2nd (4.10)	48rd
Assists:	10th (10.10).....	316th
Steals:	1st (10.81)	61st
Turnover Margin:	3rd (+0.81).....	N/A
Assist/TurnoverRatio:	10th (0.50).....	N/A
Offensive Rebounds:	T-2nd (15.67).....	N/A
Defensive Rebounds:	6th (23.24).....	N/A
3-Point FGs Made:	10th (2.19).....	318th

Individual Statistics

(Through games of 2/13)

Scoring:	8th, Tiara Malcom (14.4)
	19th, Tiffany Young (11.8)
Rebounding:	6th, Tiara Malcom (7.1)
	T-7th, Tiffany Young (7.0)
	10th, Tracey Howell (6.8)
Field Goal Pct.:	5th Tiara Malcom (.486)
	11th, Tiffany Young (.444)
Free Throw Pct.:	8th, Tiffany Young (.768)
	9th, Julie Sailer (.759)
	11th, Liz Hayes (.737)
	12th, Tiara Malcom (.736)
Steals:	7th, TyresaSmith (2.19)
	15th, Tiffany Young (1.67)
Blocked Shots:	3rd, Tiara Malcom (1.67)
	6th, Tracey Howell (0.90)



Spreading the Wealth

Delaware had four of its five starters score in double-figures against Towson on 1/29 (Hayes -15, Young -15, Malcom -11, Sailer -11). Delaware has had four or more scorers with double-digit point totals on five occasions in 2003-04, and holds a 4-1 record when it has a balanced scoring attack. Against Virginia Commonwealth on 1/18, Delaware had a season-high five players with 10 or more points (Hayes 12, Young - 12, Malcom -10, Koshansky - 10, Sailer -10). It was the first time five Blue Hens had scored in double-figures since a win over Drexel on February 4, 2001. Delaware's one loss with the balanced scoring occurred in the Hens' second meeting with the Rams on February 5. The Hens fell to VCU, 81-70, despite having four scorers in double-figures (Sailer - 16, Malcom - 15, Young - 10, Blackstone - 10).

More on the Delaware "D"

◆ Delaware leads the CAA in scoring defense in 2003-04 with an average opponent scoring total of 57.5. **The Blue Hens also rank 29th in the nation in scoring defense.**

◆ Following two back-to-back double-digit losses to William & Mary and Old Dominion, the Blue Hen defense made a statement versus Hofstra, holding the Pride to 15 points in the first half and did not allow a field goal for the first 12 minutes of the contest.

◆ The 25 points that Loyola scored against Delaware on December 14 is the lowest opponent point total in the CAA in the last five years. **Delaware held the Greyhounds to just seven points in the first half, which is the third lowest half-time score in all of Division I women's basketball this season.** Only Florida State and Vanderbilt have held teams to fewer points in a half. The Seminoles and the Commodores held Savannah State to three and six points in the first half, respectively.

◆ Delaware's defense allowed Navy only four points in the first 12 minutes of the first half back on December 5. Delaware held the Mids scoreless for the first 2:30 of the game, as it began the game on a 9-2 run.

◆ Against Manhattan, Delaware held the Jaspers to just three points in the final 7:04 of the second half.

◆ The Hens held St. John's to 15 points at the half, which was the lowest opponent half-time score -- before the Loyola win on 12/14 -- since December 8, 2001 when the Blue Hens held Centenary to 14 points in the first half.

◆ UNC Wilmington only scored 14 points in the first half vs.UD on January 4, which was then the Seahawks' season-low for points in a half.

Bench Boosters

Sophomore guard **Amanda Blackstone**, freshman point guard **Alena Koshansky**, sophomore guard **Karleena Tobin**, and freshman guard **Tyresa Smith** have all come off the bench at one point to provide a spark for the Blue Hens.

◆ Against VCU on 2/5, **Amanda Blackstone** set a new career-high in points with 10, shooting 3-4 from the floor and hitting 4-6 of her foul shots. She also scored eight points in the Blue Hens' 62-61 loss to JMU on 2/13.

◆ **Alena Koshansky** set a career-high in points with 12 against Hofstra, connecting on all of her shots (3-3 FG, 4-4 FT). She also scored 10 first-half points against VCU, hitting 2-3 from behind the three-point line.

◆ **Karleena Tobin** saw her first significant action of the season against Hofstra, coming off the bench to score a career-high eight points on 4-4 shooting from the floor in just 13 minutes.

◆ In the conference losses to William & Mary and Old Dominion, **Tyresa Smith** came off the bench to score in double-digits (15 pts vs. UNCW, 12 pts vs. ODU) to earn a place in the starting line-up. Against Hofstra, Smith tied the all-time record for steals in a game (8).

Young in 2003-04

Junior forward **Tiffany Young's** improvement as a player is obvious. After averaging just 1.8 ppg in 02-03, Young has stepped it up 2003-04. Before this season, Young had never scored in double-digits. Now, Young has had two twenty-point performances and two double-doubles with 12 points and a career-high 14 rebounds against William & Mary on January 9 and 12 points and 14 rebounds against Virginia Commonwealth on January 18. As Delaware's second-leading scorer (11.8 ppg), she tallied her first 20 point game against Fairfield in the championship game of the Coca-Cola Classic, earning her a spot on the all-tournament team. Against Manhattan, Young reached the 20 point mark for the second time, surpassing it with 21 points and 11-14 shooting from the foul line.

The DishFactor

In 2001-02 and 2002-03, the Blue Hens recorded a 27-1 record when they had more or equal the assist total of their opponent. The Hens are now 6-1 when they win the assist battle in 2003-04.

Games Delaware Won Assist Battle

Opp.	UD-Opp Assists.....	Results
La Salle	11-7	W (69-47)
Navy	10-9	W (69-57)
St. John's.....	14-11	W (59-44)
UNCW.....	11-9.....	W (57-56)
Hofstra.....	15-9	W (78-47)
Towson.....	9-8.....	W (65-52)
James Madison	17-11	L (61-62)

Hitting the Freebies

The Blue Hens are shooting **70.0 percent** from the **foul line** this season, ranking second in the CAA. **Liz Hayes, Julie Sailer, Tiffany Young** and **Amanda Blackstone** are all shooting over 75% from the charity stripe. Sailer and Young rank in the top 10 in the league in free throw percentage. Delaware has connected on 396 of 566 attempts and averages over 19 points from the foul line per game. Delaware has not shot lower than 57.7 percent from the foul line (vs. JMU, 2/12) this season. The solid shooting is no surprise as Delaware led the CAA in free throw percentage in 2002-03 with 73.4%.

There's No Place Like Home

Having four home-losses in a season is somewhat of an anomaly for the Blue Hens. The last time the Hens lost four games at home in the same season dates back to the 1998-99 when they were still in America East Conference. Despite its four losses this season at home, Delaware's home record is nothing to scoff at. **Since the 1999-00 season, the Blue Hens are 52-7 at the Bob Carpenter Center.** To put that into perspective, Delaware has won over 89% of its home contests over the last four years and over 74% of its home games in the past seven years.

Delaware Basketball Tradition

Over the past four years, the Delaware women's basketball team has recorded **four consecutive 20-win seasons** (21-8 in 1999-00, 26-5 in 2000-01, 23-7 2001-02, & 22-9 in 2002-03). Delaware has amassed 108 wins in the last five years, ranking 32nd among all Division I women's basketball programs for wins (entering the 2003-04 season). In addition to the numerical success, the Blue Hens have advanced to three consecutive post season tournaments, appearing in the NCAA Regionals in 2001 and in the WNIT in 2002 and 2003.

A December to Remember

Delaware completed the month of December with a perfect 5-0 record. The Blue Hens made it through the month of November with a 3-1 record, improving on last year's November record of 0-3. In the past two Decembers, Delaware has compiled a perfect 10-0 mark.

It's My Party

Freshman **Alena Koshansky's** 19th birthday has the potential to be extra sweet. If the Hens advanced to the conference finals, Delaware could vie for the conference championship on Koshansky's 19th birthday (3/13). **Geneva Livingston** (1/1), **Arek Deng** (1/13), and **Tiara Malcom** (1/24) recently celebrated birthdays.

The Leftovers from 2002-03

Even though the numbers below do not seem very promising, the Blue Hens are used to picking up scoring slack when teammates have left the nest. In the last three seasons, Delaware has lost five 1,000 point scorers. Also, going into the 2002-03 season, the squad had lost over thirty percent of their scoring from 2001-02 and still managed to finish 22-9.

Returning Statistics					
	02-03	Totals	Return	Lost	%Return
Points	1852	913	939		49.3%
FG Made	636	290	346		45.6%
FG Att	1595	749	846		47.0%
3FG Made	52	21	31		40.4%
3FG Att	188	87	101		46.3%
FT Made	528	312	216		59.1%
FT Att	719	414	305		57.6%
Rebounds	1058	617	441		63.4%
Off Reb	373	235	138		63.0%
Def Reb	685	382	303		55.8%
Assists	343	103	240		30.0%
Turnovers	571	238	333		41.7%
Blocks	95	49	46		51.6%
Steals	320	128	192		40.0%
Minutes	6225	2943	3282		47.3%

Homecoming

Who says you can't go home again? Well, Thomas Wolfe did, but clearly **Carrie Timmins** wasn't listening. The former standout point guard returns to Delaware this year in a new capacity--assistant coach. Timmins, who will earn her bachelor's degree in health and exercise sciences from Delaware in December, averaged 6.4 points last season and ranked among the CAA leaders in assists (91) and steals (28). She also played in 111 games as a Blue Hen (8th all-time). Timmins also joins another fellow Delaware grad and standout player turned assistant coach, **Tyrone Perry**. Perry, in his fifth year coaching at UD, was an assistant with the men's team for two years and is now entering his third season with the women's basketball team.

It Runs in the Family

Center **Arek Deng** is one of eight children, and basketball must run in her family's genes. Her older brother, **Ajou**, played for the Fairfield basketball team while her younger brother, **Luol**, a freshman at Duke, is considered one of the nation's best rookies -- if not the best -- in the class of 2003-04. Also, her cousin, **Gai**, plays for the Fairfield men's basketball team. **Gai**, a 6'9" center, averaged 12.9 points per game and finished fourth in the nation for blocked shots with 3.8 per game last year.



Game-by-Game Starters

- Richmond (L78-80 OT)**
Hayes, Sailer, Howell, Malcom, Young
- Stony Brook (W 67-58)**
Hayes, Sailer, Howell, Malcom, Young
- Brown (W 60-47)**
Hayes, Sailer, Howell, Malcom, Young
- Fairfield (W 61-51 OT)**
Hayes, Sailer, Howell, Malcom, Young
- La Salle (W 69-47)**
Hayes, Sailer, Howell, Malcom, Young
- Navy (W 69-57)**
Hayes, Sailer, Howell, Malcom, Young
- St. John's (W 59-44)**
Hayes, Sailer, Howell, Malcom, Young
- Loyola (W 54-25)**
Hayes, Sailer, Howell, Malcom, Young
- Manhattan (W 63-42)**
Hayes, Sailer, Howell, Malcom, Young
- UNC Wilmington (W 57-56)**
Hayes, Sailer, Howell, Malcom, Young

- William & Mary (L56-68)**
Hayes, Sailer, Howell, Malcom, Young
- Old Dominion (L 56-67)**
Hayes, Sailer, Howell, Malcom, Young
- Hofstra (W 78-47)**
Hayes, Sailer, **Smith**, Howell, Malcom,
- Virginia Commonwealth (W 66-56)**
Hayes, Sailer, **Smith**, Howell, Malcom,
- George Mason (L64-71)**
Hayes, Sailer, **Smith**, Howell, Malcom,
- Drexel (W 58-57 OT)**
Koshansky, **Smith**, Howell, Malcom, **Young**
- Towson (W 65-52)**
Hayes, Sailer, Howell, Malcom, Young
- James Madison (L57-84)**
Hayes, Sailer, Howell, Malcom, Young
- Virginia Commonwealth (L 70-81)**
Hayes, Sailer, Howell, Malcom, Young
- William & Mary (L 48-55)**
Hayes, Sailer, Howell, Malcom, Young
- James Madison (L61-62)**
Hayes, Sailer, Howell, Malcom, Young

****BOLD** indicates line-up change

◆ Up and Coming ◆

◆ Junior **Tiara Malcom** is 111 points away from becoming the 19th player in Delaware history to score 1,000 points. Malcom, who has scored 889 points in her career, holds a career average of 10.8 ppg.

◆ Freshman **Liz Hayes** is one three-pointer away (27) from breaking the freshman record for made-threes in a season. Megan Dellegrotti ('02) hit 28 in her rookie season.

◆ Junior **Tiara Malcom** and senior **Tracey Howell** are both climbing the all-time blocked shot leaderboard at Delaware. Malcom ranks eighth with 74 career-blocks while Howell ranks ninth with 56 to her name.

◆ Senior **Tracey Howell** is one of two players to start all 21 games for the Hens (Malcom is the other). She has played in 106 games in her career which places her tied for 19th in all-time games played.



Twin Factor

Experience and excellent credentials may not be the only requirement to be a coach at Delaware. Having a twin in the family may also be a prerequisite. Three out of four members of the coaching staff have a twin connection in their family. Head coach **Tina Martin** and associate head coach **Jeanine Radice** are both twins -- Martin is an identical twin while Radice has a fraternal twin sister. Assistant coach **Tyrone Perry** also has twin fraternal siblings.

Transfer Tales--Part I, II & III

This year's squad carries three players with unique playing backgrounds in redshirt sophomore **Arek Deng**, junior **Kristy Gaines** and red-shirt junior **Geneva Livingston**.

◆ **Deng**, native of Sudan, is eligible this year after transferring from Maryland. As a Terp, Deng appeared in four games in 2001-02, before a broken ankle ended her season.

◆ **Gaines** also has a Maryland background in her collegiate career. Gaines' story is that of a journey-man. A native of Newman, GA, Gaines began her career at Southern Mississippi in 2000-01 before transferring to Maryland and taking a redshirt year. Gaines, who never saw action at Maryland, then transferred to Hagerstown (MD) Junior College and averaged 16.1 points and 7.8 rebounds per game last season.

◆ **Livingston** comes to Delaware from the University of New Hampshire where she averaged 10.4 ppg as the team's No. 2 scorer. She will sit out the 2003-04 season per NCAA transfer regulations.

♦ Updating the Program Records ♦

Career Scoring Leaders

No.	Name	Years	Pts.
1.	Cindy Johnson (G)	1997-2001	1,675
2.	Colleen McNamara (C)	1991-1995	1,560
3.	Debbie Eaves	1986-1990	1,551
4.	Lori Howard	1977-1981	1,469
5.	Danielle Leyfert	1997-2001	1,447
6.	Sharon Wisler	1986-1990	1,420
7.	Meg McDowell	1982-1986	1,236
8.	Shanda Piggott	1994-1998	1,223
9.	Lisa Cano	1984-1988	1,188
10.	Christina Rible	1998-2002	1,181
11.	Jennifer Riley	1989-1992	1,165
12.	Megan Dellegrotti	1998-2002	1,112
13.	Denise Wojciech	1992-1996	1,091
14.	Sharon Howett	1974-1978	1,089
15.	Donna Werner	1980-1984	1,088
16.	Merel van Zanten	1990-1994	1,049
17.	Allison Trapp	2000- 2003	1,030
18.	Molly Larkin	1989-1993	1,017
19.	Cynthia Phipps	1980-1984	976
20.	TIARAMALCOM	2001-PRESENT	889
21.	Kathie Malloy	1980-1984	884
22.	Sarah Gause	1983-1986	880
23.	Bev Santee	1991-1995	862
24.	Sue Whitfield	1984-1988	851
25.	Keisha McFadgion	1995-1998	847
26.	JULIE SAILER	2001-PRESENT	806
27.	Robin Stoffel	1986-1990	768
28.	Linda Cyborski	1988-1992	764
29.	Linn Price	1979-1984	724
30.	Karen Conlin	1974-1978	716

Field Goal Percentage (Min. 250 att.)

No.	Name	Years	Pct.
1.	Donna Werner (F)	1980-84	.493
2.	Kathie Malloy	1980-84	.488
3.	Daphne Joy	1986-90	.487
4.	Sharon Wisler	1986-90	.486
5.	Colleen McNamara	1991-95	.483
6.	TIARA MALCOM	2001-PRESENT	.478
7.	Marian Moorer	1984-87	.476
8.	Sarah Gause	1983-86	.473
9.	Debbie Eaves	1986-90	.469
10.	Jen Riley	1989-92	.463

Three-Point Field Goals

No.	Name	Years	FG
1.	Megan Dellegrotti (G)	1998-02	154
2.	Linda Cyborski	1988-92	98
3.	Bev Santee	1991-95	91
4.	Jen Lipinski	1989-93	76
5.	Keisha McFadgion	1995-98	64
6.	Lindsay Davis	1998-02	63
7.	Kristen Stout	1995-98	51
8.	JULIE SAILER	2001-PRESENT	37
9.	Bridget McCarthy	1987-91	34
10.	LIZ HAYES	2003-PRESENT	27

Career Rebounding Leaders

No.	Name	Years	Reb.
1.	Colleen McNamara (C)	1991-95	1,063
2.	Sharon Howett	1974-78	1,009
3.	Debbie Eaves (F)	1986-90	992
4.	Christina Rible	1998-02	975
5.	Sharon Wisler	1986-90	875
6.	Donna Werner	1980-84	873
7.	Shanda Piggott	1994-98	862
8.	Lori Howard	1977-81	801
9.	Meg McDowell	1982-86	748
10.	Kathie Malloy	1980-84	691
11.	Danielle Leyfert	1997-2001	645
12.	Christine Cole	1999-2003	623
13.	Jennifer Riley	1989-92	582
14.	Denise Wojciech	1992-96	564
15.	Cindy Johnson	1997-2001	541
16.	TIARAMALCOM	2001- PRESENT	538
17.	Sarah Gause	1983-86	530
18.	Merel van Zanten	1990-94	509
19.	Molly Larkin	1989-93	499
20.	Lindsay Davis	1998-02	484
21.	Robin Stoffel	1986-90	474
22.	TRACEY HOWELL	2000-PRESENT	453
23.	Lisa Cano	1984-88	445
24.	Jackie Porac	1995-1998	443
25.	Mary Wisniewski	1972-76	405

Free Throw Percentage (Min. 80 Attempts)

No.	Name	Years	Pct.
1.	Linda Cyborski (G)	1988-92	.852
2.	Megan Dellegrotti	1998-02	.839
3.	JULIE SAILER	2001-PRESENT	.817
4.	Carolyn Hartsky	1983-87	.807
5.	Jennifer Riley	1989-92	.795
6.	Allison Trapp	1999-03	.780
7.	Jen Lipinski	1989-93	.772
8.	TIARA MALCOM	2001-PRESENT	.765
9.	Linda Malouf	1985-89	.761
	Lindsay Davis	1998-02	.761

Blocked Shots

No.	Name	Years	Blocks
1.	Colleen McNamara (C)	1991-95	197
2.	Debbie Eaves	1986-90	177
3.	Paula Polyanski	1983-86	155
4.	Sarah Gause	1983-86	115
5.	Christine Cole	1999-03	108
6.	Suzanne Street	1997-00	79
7.	Merel van Zanten	1990-94	77
8.	TIARAMALCOM	2001-PRESENT	74
9.	TRACEY HOWELL	2000-PRESENT	56
10.	Cheryl Gittings	1978-82	44

◆ *Season & Career Highs* ◆

#4 ~ Liz Hayes

#25 ~ Tiffany Young

2003-04 Season Highs:
Points: 17 vs. St. John's, 12/8
Rebounds: 3, five times
Assists: 5 vs. Virginia Commonwealth, 2/5
Steals: 4 vs. Fairfield, 11/30
Blocks: n/a
FTAtt.: 6 vs. Loyola (MD), 12/7
FT Made: 6 vs. Loyola (MD), 12/7
FG Att.: 11 vs. Towson, 1/29
FG Made: 6 vs. St. John's, 12/8
Minutes: 35, twice

2003-04 Season Highs	Career Highs:
Points: 21 vs. Manhattan, 12/22	same
Rebounds: 14 vs. William & Mary, 1/9	same
Assists: 2, twice	same
Steals: 3, three times	same
Blocks: 3 vs. Virginia Commonwealth, 1/18	same
FTAtt.: 14 vs. Manhattan, 12/22	same
FT Made: 11 vs. Manhattan, 12/22	same
FG Att.: 13, three times	same
FG Made: 8 vs. Fairfield, 11/30	same
Minutes: 33 vs. Fairfield, 11/30	same

#12 ~ Alena Koshansky

#31 ~ Kristy Gaines

2003-04 Season Highs:
Points: 12 vs. Hofstra, 1/15
Rebounds: 3, twice
Assists: 3 vs. Stony Brook, 11/25
Steals: 5 vs. Hofstra, 1/15
Blocks: n/a
FTAtt.: 4 vs. Hofstra, 1/15
FT Made: 4 vs. Hofstra, 1/15
FG Att.: 7 vs. Stony Brook, 11/25
FG Made: 3, twice
Minutes: 24 vs. Stony Brook, 11/25

2003-04 Season Highs
Points: 7 vs. Richmond, 11/21
Rebounds: 8 vs. Richmond, 11/21
Assists: n/a
Steals: n/a
Blocks: n/a
FTAtt.: n/a
FT Made: n/a
FG Att.: 7 vs. Richmond, 11/22
FG Made: 3 vs. Richmond, 11/22
Minutes: 17 vs. Richmond, 11/22

#15 ~ Julie Sailer

#32 ~ Amanda Blackstone

2003-04 Season Highs	Career Highs:
Points: 16, three times	21, twice
Rebounds: 9 vs. Drexel, 1/25	12 at UNCW (1/4/02)
Assists: 4 vs. Drexel, 1/25	4, three times
Steals: 4 vs. Navy, 12/5	3, three times
Blocks: n/a	1, five times
FTAtt.: 10, three times	12, twice
FT Made: 7, twice	10, twice
FG Att.: 14, twice	16 vs. Bucknell (12/8/02)
FG Made: 6 vs. Old Dominion, 1/11	7, three times
Minutes: 43 vs. Richmond, 11/22	

2003-04 Season	Career Highs
Points: 10 vs. Virginia Commonwealth, 2/5	same
Rebounds: 4 vs. LaSalle, 12/3	same
Assists: 3 vs. Fairfield, 11/30	same
Steals: 2, James Madison, 2/12	2, twice
Blocks: 1, three	same
FTAtt.: 6 vs. Virginia Commonwealth, 2/5	same
FT Made: 4, vs. Virginia Commonwealth, 2/5	same
FG Att.: 5, twice	same
FG Made: 3, twice	same
Minutes: 22 vs. Virginia Commonwealth, 2/5	same

#22 ~ Karleena Tobin

#33 ~ Tiara Malcom

2003-04 Season Highs	Career Highs:
Points: 8 vs. Hofstra, 1/15	same
Assists: 1, four times	same
Rebounds: 3 vs. Drexel, 1/25	same
Steals: 2 vs. Hofstra, 1/15	same
Blocks: n/a	n/a
FTAtt.: 2 vs. James Madison, 2/1	same
FT Made: n/a	n/a
FG Att.: 5 vs. Towson, 1/29	same
FG Made: 4 vs. Hofstra, 1/15	same
Minutes: 21 vs. Towson, 1/29	same

2003-04 Season Highs	Career Highs
Points: 31 vs. George Mason, 1/22	same
Rebounds: 11, four times	16 vs. JMU (1/30/03)
Assists: 4 vs. George Mason, 1/22	4, twice
Steals: 3, five times	7 vs. Towson (3/6/03)
Blocks: 5 vs. Towson, 1/29s	5, twice
FTAtt.: 18 vs. Richmond, 11/22	same
FT Made: 12 vs. Richmond, 11/22	13, vs. Old Dominion (2/2/03)
FG Att.: 15, twice	same
FG Made: 11, vs. George Mason, 1/22	same
Minutes: 43 vs. Richmond, 11/22	same

#23 ~ Tyresa Smith

#40 ~ Arek Deng

2003-04 Season Highs:
Points: 15 vs. William & Mary, 1/9
Rebounds: 9 vs. LaSalle, 12/3
Assists: 4 vs. Hofstra, 1/15
Steals: 8 vs. Hofstra, 1/15
Blocks: 3 vs. Loyola (MD) 12/14
FTAtt.: 8 vs. Virginia Commonwealth, 1/18
FT Made: 6 vs. Old Dominion, 1/11
FG Att.: 15 vs. Drexel, 1/25
FG Made: 6, twice
Minutes: 29 vs. Drexel, 1/25

2003-04 Season Highs:
Points: 2 at Loyola, 12/14
Rebounds: 4 vs. Brown, 11/29
Assists: 1, twice
Steals: 2 vs. Brown, 11/29
Blocks: 1 vs. UNC Wilmington, 1/4
FTAtt.: 2 vs. Brown, 11/29
FT Made: 1 vs. Brown, 11/29
FG Att.: 1, three times
FG Made: 1 vs. Loyola, 12/14
Minutes: 9 vs. vs. UNC Wilmington, 1/4

#50 ~ Tracey Howell



2003-04 Season Highs	Career Highs:
Points: 12 vs. James Madison, 2/1	12, twice
Rebounds: 13 vs. James Madison, 2/1	same
Assists: 4, three times	6 vs. Marist (12/23/02)
Steals: 4 vs. Stony Brook, 11/25	4, twice
Blocks: 3 vs. Stony Brook, 11/25	3, twice
FTAtt.: 6 vs. Manhattan, 12/22	10 vs. W&M (1/26/03)
FT Made: 4 vs. James Madison, 2/1s	6 vs. W&M (1/26/03)
FG Att.: 8 vs. James Madison, 2/1	9, twice
FG Made: 4, three times	5, twice
Minutes: 38 vs. UNC Wilmington, 1/4	same

◆ *Miscellaneous Stats* ◆

Scoring Trends

Led in scoring* '03-04 (w-l) Career (w-l)..Consec.
 Tiara Malcom.....9 (5-4)18 (11-7).....1
 Tiffany Young.....6 (5-1)6 (5-1)
 Julie Sailer4 (2-2).....14 (7-7)
 Liz Hayes.....3 (3-0)3 (3-0)
 Tyresa Smith1 (0-1)1 (0-1)
 *includes games tied for team-high

Double-digit points'03-04 (w-l)Career (w-l)Consec.
 Tiara Malcom.....17(10-7)51 (35-16).....10
 Tiffany Young.....15 (8-7)15 (8-7).....5
 Julie Sailer.....10 (7-3)43 (34-9)1
 Liz Hayes.....7 (6-1)7 (6-1)
 Tyresa Smith6 (3-3)6 (3-3)1
 Tracey Howell.....2 (0-2)5 (3-2)
 Alena Koshansky2 (2-0).....2(2-0)
 Amanda Blackstone.....1 (0-1)1 (0-1)

20-plus points.....'03-04 (w-l) Career (w-l)..Consec.
 Tiara Malcom.....4 (2-2)6 (3-3)
 Tiffany Young2 (2-0)2 (2-0)

Other Streaks

Consecutive Games Played

Tiara Malcom82.....(first action 11/23/01)
 TraceyHowell.....63(DNP1/20/02)
 Julie Sailer50.....(DNP 11/30/02)
 Tiffany Young49.....(DNP12/4/02)
 Liz Hayes.....21.....(first start 11/22/03)
 Alena Koshansky21.....(first action 11/22/03)
 Tyresa Smith21.....(first action 11/22/03)
 Amanda Blackstone6(DNP1/22/04)

Consecutive Games Started

Tiara Malcom52
 TraceyHowell21
 Tiffany Young.....6
 Liz Hayes5
 Julie Sailer.....5

Second Chance Points

Game-by-GameUD-Opp.....Game Result
 Richmond^12-1378-80 OT (L)
 at Stony Brook15-6.....67-58(W)
 Brown.....12-1760-47 (W)
 Fairfield^6-7.....61-51 OT (W)
 La Salle18-1469-47 (W)
 Navy23-9.....69-57 (W)
 at St. John's.....9-759-44 (W)
 at Loyola (MD)20-654-25(W)
 Manhattan.....12-9.....63-42 (W)
 at UNC Wilmington16-5.....57-56 (W)
 at William & Mary.....12-656-68 (L)
 Old Dominion14-656-67 (L)
 Hofstra7-16.....78-47 (W)
 VCU.....8-1166-56 (W)
 at George Mason8-9.....64-71 (L)
 at Drexel.....N/A.....58-57 OT (W)
 Towson21-4.....65-52 (W)
 at James MadisonN/A.....57-84 (L)
 at Va. Commonwealth13-570-81 (L)
 William & Mary18-448-55 (L)
 James Madison7-1161-62 (L)
 at Hofstra
 at Old Dominion
 UNC Wilmington
 Drexel
 at Towson
 George Mason
 ALLTELCAA Tourn.

Totals: 251-162

Rebounding Trends

Led in Rebounds* '03-04Career.....Consec.
 Tracey Howell916
 Tiara Malcom.....727
 Tiffany Young.....55.....1
 Julie Sailer.....14
 Tyresa Smith.....11
 *includes games tied for team-high

Double-digit rebound''03-04CareerConsec.
 TraceyHowell57.....1
 Tiara Malcom.....414
 Tiffany Young.....22

Double-Doubles.....'03-04CareerConsec.
 Tiara Malcom.....412
 Tiffany Young.....22
 Tracey Howell11

Win/Loss Margins

Points Margin..... **Wins**..... **Losses**
 121
 251
 3
 4
 5
 6
 72
 8
 91
 102
 11-15.....43
 16-19.....
 20+.....41

Single Game Superlatives

Largest Delaware Lead:
 33, twice
Largest Delaware Deficit:
 30 vs. James Madison, 2/1/04
 (75-45 7:12 2nd & 82-52 3:04 2nd)
Largest Delaware Lead in a Loss:
 14 vs Richmond, 34-20 (2:17, 1st Half)
Largest Delaware Deficit Overcome in a Win:
 7, twice
Largest Delaware Halftime Lead:
 27 vs. Hofstra (42-15) (1/15/04)
Largest Delaware Halftime Deficit:
 17 vs. Old Dominion (37-20) (1/11/04)
Largest Delaware Win:
 31 vs. vs. Hofstra, 78-47 (1/15/04)
Largest Delaware Loss:
 27 vs. James Madison, 57-84 (2/1/04)
Best Delaware FG%:
 52.0 vs. vs. Hofstra (1/15/04)
Worst Delaware FG%:
 24.6 vs. Brown
Best Opponent FG%:
 57.9, Virginia Commonwealth (2/5/04)
Worst Opponent FG%:
 20.0 vs. Loyola (MD)
Best Delaware FT%:
 84.2 vs. Fairfield
Worst Delaware FT%:
 57.7 vs. James Madison (15-26) (2/12/04)
Least Points by Delaware in First Half:
 17 vs. William & Mary (2/8/04)
Most Points by Delaware in First Half:
 43 vs Virginia Commonwealth (2/5/04)
Least Points an Opponent in First Half:
 7, Loyola (MD)
Most Points by Opponent in First Half:
 38, William & Mary (1/9/04)
Least Points by Delaware in Second Half:
 18 vs. Drexel (1/25/04)
Most Points by Delaware in Second Half:
 41 vs. Navy
Least Points an Opponent in Second Half:
 18, Loyola (MD)
Most Points by Opponent in Second Half:
 48, Virginia Commonwealth (2/5/04)

FT Shooting in Final 2:00

Game-by-GameFT-FTAGame Result
 Richmond^5-678-80 OT (L)
 at Stony Brook.....4-4.....67-58(W)
 Brown.....4-7.....60-47 (W)
 Fairfield^8-10.....61-51 OT (W)
 La Salle0-0.....69-47 (W)
 Navy1-2.....69-57 (W)
 at St. John's.....0-0.....59-44 (W)
 at Loyola (MD)0-0.....54-25(W)
 Manhattan3-463-42 (W)
 at UNC Wilmington7-1157-56 (W)
 at William & Mary0-156-68(L)
 Old Dominion3-456-57 (L)
 Hofstra0-0.....78-47 (W)
 VCU2-6.....66-56 (W)
 at George Mason4-464-71 (L)
 at Drexel.....3-458-57 OT (W)
 Towson0-0.....65-52 (W)
 at James Madison.....1-257-84 (L)
 at Va.Commonwealth...3-470-81 (L)
 Wilm. & Mary2-248-55 (L)
 James Madison1-461-62 (L)
 at Hofstra
 at Old Dominion
 UNC Wilmington
 Drexel
 at Towson
 George Mason
 ALLTELCAA Tourn.
 ^includes overtime
Totals: 51-75 (68.0%)

Bench Scoring

Game-by-GameUD-Opp.Game Result
 Richmond.....10-1878-80 OT (L)
 at Stony Brook.....15-20.....67-58(W)
 Brown9-1360-47 (W)
 Fairfield.....4-20.....61-51 OT (W)
 La Salle24-11.....69-47 (W)
 Navy17-16.....69-57 (W)
 at St. John's.....4-5.....59-44 (W)
 at Loyola (MD)18-6.....54-25(W)
 Manhattan.....11-563-42 (W)
 at UNC Wilmington8-1657-56 (W)
 at William & Mary16-2056-68 (L)
 Old Dominion14-956-67 (L)
 Hofstra32-2478-47 (W)
 VCU26-1066-56 (W)
 at George Mason.....20-17.....64-71 (L)
 at Drexel17-258-57 OT (W)
 Towson.....7-1165-52 (W)
 at James Madison.....5-2457-84 (L)
 at Va.Commonwealth...15-27.....70-81 (L)
 Wilm. & Mary5-6.....48-55 (L)
 James Madison23-14.....61-62 (L)
 at Hofstra
 at Old Dominion
 UNC Wilmington
 Drexel
 at Towson
 George Mason
 ALLTELCAA Tourn.
Totals: 300-292

Game Notes ◆ **Game 22** ◆ **Delaware (13-8, 5-7) vs. Hofstra (12-9, 9-3)**

◆ Radio & TV Chart ◆

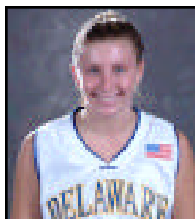
#4

Liz Hayes

Fr. ♦ Guard ♦ 5-7
Easton, PA

PPG ___ RPG ___

APG ___ Misc. ___



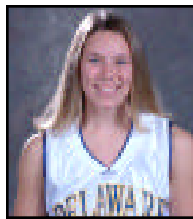
#12

Alena Koshansky

Fr. ♦ Guard ♦ 5-8
Fairfax, VA

PPG ___ RPG ___

APG ___ Misc. ___



#14

Jackie Gordon

Jr. ♦ Guard ♦ 5-3
Lower Gwynedd, PA

PPG ___ RPG ___

APG ___ Misc. ___



#15

Julie Sailer

Jr. ♦ Guard ♦ 5-11
Washington Crossing,
PA

PPG ___ RPG ___

APG ___ Misc. ___



#22

Karleena Tobin

So. ♦ Guard ♦ 5-8
Baltimore, MD

PPG ___ RPG ___

APG ___ Misc. ___



#23

Tyresa Smith

Fr. ♦ Guard ♦ 5-10
Dover, DE

PPG ___ RPG ___

APG ___ Misc. ___



#25

Tiffany Young

Jr. ♦ Forward ♦ 6-2
Fairfax, VA

PPG ___ RPG ___

APG ___ Misc. ___



#31

Kristy Gaines

Jr. ♦ Center ♦ 6-1
Newman, GA

PPG ___ RPG ___

APG ___ Misc. ___



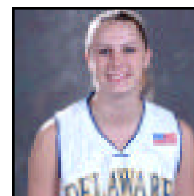
#32

Amanda Blackstone

So. ♦ Guard ♦ 6-0
Schenectady, NY

PPG ___ RPG ___

APG ___ Misc. ___



#33

Tiara Malcom

Jr. ♦ Forward ♦ 6-1
Wilmington, DE

PPG ___ RPG ___

APG ___ Misc. ___



#40

Arek Deng

So.-r ♦ Center ♦ 6-4
London, England

PPG ___ RPG ___

APG ___ Misc. ___



#50

Tracey Howell

Sr. ♦ G/F ♦ 6-0
Newark, DE

PPG ___ RPG ___

APG ___ Misc. ___



*Head
Coach*

Tina Martin

8th Season at
Delaware
(Lock Haven '86)

