



## ◆ The Last Time ◆

**UDplayed overtime...**  
1/15/2004 vs. Drexel (W 58-57)

**UD played double-overtime...**  
1/20/1997 at Drexel (L69-73)

**UDscored 100 points...**  
2/27/1981 vs. Temple (101-96 OT)

**UD allowed 100 points...**  
2/13/1997 vs. Maine (54-102)

**UD was held under 40 points...**  
2/20/2003 at George Mason (L36-47)

**UD held opponent under 40 points...**  
12/14/2003 vs. Loyola (MD) (W 54-25)

**UD made five 3-pt FGs...**  
5-15 vs. George Mason, 1/22/04

**An opponent made five 3-pt FGs...**  
9-17, George Mason, 1/22/04

**A Blue Hen scored 20 points...**  
Tiara Malcom (21) vs. UNCW, 1/4/2003

**An opponent scored 20 points...**  
Two Drexel players with 23, 1/25/2004

**A Blue Hen scored 25 points...**  
Allison Trapp (28) at ODU, 3/15/2003  
(CAAC Championship)

**An opponent scored 25 points...**  
Saona Chapman (29), Richmond, 11/22/03

**A Blue Hen scored 30 points...**  
Tiara Malcom (31), vs. George Mason, 1/23/04

**An opponent scored 30 points...**  
Cyndy Wilks (30), Virginia Commonwealth,  
1/18/04

**A Blue Hen grabbed 10 rebounds...**  
Tiara Malcom (11) vs. Drexel, 1/24/04

**An opponent grabbed 10 rebounds...**  
Vernessa Neomo (12), George Mason, 1/23/04

**A Blue Hen grabbed 15 rebounds...**  
Tiara Malcom (16) at JMU, 1/30/2003

**An opponent grabbed 15 rebounds...**  
Tracy Morgan (16), UNCW, 1/4/2002

**A Blue Hen had 10 assists...**  
Christine Koren (10) at Lafayette, 11/19/1999

**An opponent had 10 assists...**  
Lauren Hall-Gregory (10), Hofstra, 2/2/2001

**A Blue Hen had 5 blocks...**  
Tiara Malcom (5) vs. Richmond, 11/22/2002

**An opponent had 5 blocks...**  
Nicole Turner (5), ODU (CAAFinal), 3/15/2003

**A Blue Hen had 5 steals...**  
Tyresa Smith (5) vs. George Mason, 1/23/04

**An opponent had 5 steals...**  
Catherine Scanlon (5) Drexel, 1/25/2004

**A Blue Hen had a double-double...**  
Tiara Malcom (16 pts, 11 rbs) vs. Drexel, 1/25/04

**An opponent had a double-double...**  
Monique Coker (10 pts, 12 rbs) ODU, 1/11/2004



## ◆ Quick Shots ◆

◆ Today marks the 44th meeting between Delaware and Towson, dating back to their first meeting in 1974. The Blue Hens hold an edge in the all-time series, 30-13, and have won the last seven straight.

◆ Delaware and Towson wrap up the first go-round of CAA action with its games this week. The Blue Hens have yet to meet up with Towson or James Madison, who they travel to on Sunday, while the Tigers travel to UNC Wilmington on Sunday.

◆ In all of the Blue Hens' 12 wins this season, they have held their opponents under 60 points, and have held six foes to 50 points or less. Towson averages a league-worst 59.8 points per game overall and 49.4 points per game in conference games.

◆ Junior forward **Tiara Malcom** had two stellar performances last week, including a career-high 31 points in the Hens' 71-64 loss to George Mason on Thursday. Malcom shot 11-13 from the floor, and hit her first two career three pointers. She became just the 10th Blue Hen player to break the 30-point marker. Allison Trapp (2000-03) was the last Blue Hen to score over 30. Trapp scored 34 on January 5, 2003 in the Hens' 80-69 win over Hofstra.

◆ Towson has lost 10 straight conference contests dating back to the 2002-2003 season. The Tigers have not won a conference contests since March 2, 2003 when they downed Hofstra, 62-49.

◆ **Also in these game notes:** **Tiara Malcom's** POW recognition from the CAA...the details on Delaware's nationally ranked defense...Delaware native **Tyresa Smith** and her new spot in the UD all-time records....and more...

## ◆ In Delaware's Corner ◆



**Tina Martin, Head Coach**...Eighth season at University of Delaware...compiled a 135-84 record at the helm of the Hens' basketball program becoming, the fastest UD basketball coach (men's or women's) to reach 100 career wins...has led the Blue Hens to four-straight 20 win seasons and three consecutive post season appearances...spent nine seasons at Seton Hall as an assistant coach in a program that made back-to-back NCAA tournament appearances in 1994 and 1995, advancing to the Sweet 16 in 1994...was a two-time Division II All-American at Lock Haven University, a four-time Pennsylvania State Athletic Conference All-Star, and two-time league Player of the Year who finished her career as the PSAC's all-time leading scorer with 2,157 career points.

## ◆ Blue Hens On The Air ◆

### Tonight's Game

Tonight's contest will be available on The Ticket 1290 AM and on internet radio broadcast on The Ticket's website (<http://www.1290theticket.com>). The University of Delaware student radio station, WVUD-FM, will also be broadcasting the game ([www.wvud.org](http://www.wvud.org)).

Live Stats for the game are also available on the University of Delaware's Athletics web site ([http://www.udel.edu/sportsinfo/livestats/w\\_basketball/xlive.htm](http://www.udel.edu/sportsinfo/livestats/w_basketball/xlive.htm)).

### The Tina Martin Show

The Tina Martin Show airs each Monday from 6:30-7 p.m. on The Ticket 1290 AM and The River 94.7 FM (RealAudio links are available at [www.udel.edu/sportsinfo/womens\\_basketball](http://www.udel.edu/sportsinfo/womens_basketball)). Each Monday, the Tina Martin Show will be broadcast from the legendary Deer Park Tavern on Main Street in downtown Newark. Coach Martin is joined by the voice of the Blue Hens, Mike Corey, for a review of the past week's game, a preview of upcoming action, and a series of questions from the restaurant audience and listeners via call-in. During the 2003-04 season, the live shows are scheduled for Dec. 1, Dec. 8, Dec. 15, Dec. 22, Dec. 29, Jan. 5, Jan. 12, Jan. 19, Jan. 26, Feb. 2, Feb. 9, Feb. 16, Feb. 23, Mar. 1 and Mar. 8.

### Radio Coverage

For the fifth straight year, the Blue Hen radio network's flagship station is The Ticket 1290 AM. Also on the network are WDOV-AM 1410 (Dover) and WTGM-AM 960 (Salisbury). The majority of the home Blue Hen women's basketball action will be available via the Blue Hen radio network. For more detailed listings, see the Delaware Women's Basketball home page ([www.udel.edu/sportsinfo/womens\\_basketball](http://www.udel.edu/sportsinfo/womens_basketball)). In addition, many UDBasketball games are also broadcast on the UD student station, WVUD-FM 91.3, and WVUD2, the station's internet radio network. Real Audio links for both broadcasts are available through UD's athletics website. Delaware women's basketball will also be appearing on television in 2004 as it takes part in the CAAGame of the Week on February 8 at William & Mary. Details to follow as they become available.

## ◆ Pronunciation Guide ◆

Don't worry, you're not the only one who can't say Amanda Blackstone's home town (Sku-neck-ta-dee) or her high school (MOnass-hen). So, here is the rest of the "tough ones" of the 2003-04 Blue Hens, all sounded out.

- ◆ #12 Alena (Ah - LAY - nuh) Koshansky (KUH - SHAN - ski)
- ◆ #23 Tyresa (TIE - REE - suh) Smith
- ◆ #24 Jayne (JAY - NEE) Boyer
- ◆ #33 Tiara (TEE - AIR - uh) Malcom
- ◆ #40 Arek (AH - WRECK) Deng
- ◆ Asst. Head Coach Jeanine Radice (Ruh - DEESE)

11

Career double-doubles for Tiara Malcom

77

Consecutive contests Tiara Malcom has played in

12

Alena Koshansky's career-high in points set vs. Hofstra

8

Steals Tyresa Smith had vs. Hofstra to tie school record

6

Games UD has held opponents under 50 total points in '03-04

Hens By the Numbers

Table with 4 columns: '03-04, '02-'03, '01-'02. Rows include Home, Away, Neutral, vs. CAA at Home, vs. CAA on Road, in Overtime, Scoring 70+ points, Scoring -70 points, Allowing 70+ points, Allowing -70 points, Leading at Halftime, Trailing at Halftime, Tied at Halftime, Shoot 50%+ FG, Shoot -50% FG, Opponent shoots 50%+ FG, Opponent shoots -50% FG, Shoot 70%+ FT, Shoot -70% FT, Opponent shoots 70%+ FT, Opponent shoots -70% FT, More or = turnovers, Less turnovers, Outrebound or = Opponent, Outrebounded by Opponent, More or = Assists, Less Assists, At night, During the day, In November, In December, In January, In February, In March, Sunday, Monday, Tuesday, Wednesday, Thursday, Friday, Saturday, vs. Atlantic 10, vs. America East, vs. Big East, vs. Big South, vs. CAA, vs. Conference USA, vs. Independents, vs. Ivy League, vs. Metro Atlantic Athletic, vs. Mid-Eastern Athletic, vs. Northeast, vs. Patriot League, vs. Southern Conference, under Tina Martin.

All In a Week's Work

Junior forward Tiara Malcom was recognized on Tuesday as the CAA Player of the Week, after posting consecutive double-doubles against George Mason and Drexel. Against the Patriots, she scored a career-high 31 points and grabbed a game-high 11 rebounds. She became just the 10th Blue Hen player to break the 30 point marker. In the Hens' thrilling overtime victory over the Dragons, Malcom scored 16 points, including the game-winning free throws and coralled 11 rebounds. She tallied her first double-double in the championship game of the Coca-Cola Classic with 14 points and 11 rebounds against host Fairfield. Malcom recorded seven double-double in last season, including a 15 point, 16 rebound (career-high) outing against James Madison on January 30, 2003, for 11 career 10-point, 10-rebound performances. Since her debut in the first game of the 2001-02 season, Malcom has played in 77 straight games, and the Blue Hens own a 57-20 record with Malcom in the game.

Home Grown

Freshman guard Tyresa Smith (Dover, DE/Polytech), the 2003 Delaware High School Player of the Year, set a new career-high with a team-high 15 points in the Blue Hens' loss to CAA rival William & Mary on January 9. Against the Tribe, Smith also had a seven steals. She followed that performance with solid play against Hofstra, posting eight points, six rebounds, and eight steals to tie the UD program record for steals in a game. Against La Salle, she came off the bench to add 10 points, nine rebounds, four steals, three assists, and two blocks. Smith also scored in double-figures (10 points) and pulled down seven rebounds in the Hens' win over Loyola. Smith is averaging 7.3 points per game and 3.8 rebounds per game.

NCAA Division I Scoring Defense Rankings

Table with 3 columns: No., Name, W-L, OPP PPG. Lists top 14 teams including New Mexico, Auburn, UNC Asheville, Texas Tech, Villanova, Michigan St, Utah, Connecticut, Texas, Ohio St, Southern Miss, Delaware St, Delaware, and Jackson St.

(As of January 26, 2004 from www.NCAA.org)

The Defense Gets It Done

Delaware basketball is notorious for its defense. The Blue Hens have held six teams under 50 points this year and hold a 6-0 mark in those games. Last year, Delaware held opponents to 53.5 points a game to lead the CAA in scoring defense. The Hens kept teams under 50 points on 13 occasions in 2002-03 and posted a 12-1 record in those contests. This season, the Blue Hens are allowing an average of 54.6 points per game. In their streak of nine wins, broken by William & Mary on January 9, the Blue Hens allowed a mere 47.4 points per contest.

Games UD Held Opp. Under 50 Pts

Table with 4 columns: Pts, Opponent, Result, Date. Lists games against Loyola (MD), Manhattan, St. John's, Brown, La Salle, and Hofstra.

More on the Delaware "D"

Delaware leads the CAA in scoring defense in 2003-04 with an average opponent scoring total of 54.6

Following two back-to-back double-digit losses to William & Mary and Old Dominion, the Blue Hen defense made a statement versus Hofstra, holding the Pride to 15 points in the first half and did not allow a field goal for the first 12 minutes of the contest.

The 25 points that Loyola scored against Delaware on December 14 is the lowest opponent point total in the CAA in the last five years. Delaware held the Greyhounds to just seven points in the first half, which is the third lowest half-time score in all of Division I women's basketball this season. Only Florida State and Vanderbilt have held teams to less points in a half. The Seminoles and the Commodores held Savannah State to three and six points in the first half, respectively.

Delaware's defense allowed Navy only four points in the first 12 minutes of the first half back on December 5. Delaware held the Mids scoreless for the first 2:30 minutes of the game, as it began the game on a 9-2 run.

Against Manhattan, Delaware held the Jaspers to just three points in the final 7:04 minutes of the second half.

The Hens held the St. John's to 15 points at the half, which was the lowest opponent half-time score -- before the Loyola win on 12/14 -- since December 8, 2001 when the Blue Hens held Centenary to 14 points in the first half.

UNC Wilmington only scored 14 points in the first half vs. UD on January 4, which was then the Seahawk's season-low for in points in a half.



◆ *Around the Conference* ◆

**2003-2004 Standings**  
(Through games of 1/28)

Team	Conference			Overall		
	W	L	PCT	W	L	PCT
Old Dominion.....	6	1	.857	11	6	.647
Hofstra.....	6	1	.857	9	7	.563
<b>Delaware.....</b>	<b>4</b>	<b>3</b>	<b>.571</b>	<b>12</b>	<b>4</b>	<b>.750</b>
George Mason.....	4	3	.571	9	5	.643
UNC Wilmington.....	4	3	.571	9	7	.563
Drexel.....	4	3	.571	7	9	.438
William & Mary.....	3	4	.429	7	9	.438
James Madison.....	2	5	.286	7	11	.389
Va Commonwealth.....	2	5	.286	5	10	.333
Towson.....	0	7	.000	8	8	.500

**Team Statistics**

(Through games of 1/28)

Scoring Offense:	4th (63.4 ppg)
Scoring Defense:	1st (54.6 ppg)
Scoring Margin:	1st (+8.9)
Free Throw Pct.:	2nd (.709)
Field Goal Pct.:	7th (.398)
Field GoalPct. Defense:	1st (.363)
3-Point Field Goal Pct.:	9th (.287)
3-Point Field Goal Pct. Defense:	2nd (.262)
Rebounding Offense:	1st (40.6)
Rebounding Defense:	3rd (35.2)
Rebounding Margin:	1st (+5.4)
Blocked Shots:	1st (4.44)
Assists:	10th (10.00)
Steals:	2nd (10.94)
Turnover Margin:	3rd (+0.94)
Assist/TurnoverRatio:	10th (0.49)
Offensive Rebounds:	2nd (15.75)
Defensive Rebounds:	3rd (24.81)
3-Point Field Goals Made:	10th (2.31)

**Individual Statistics**

(Through games of 1 /27)

Scoring:	6th, Tiara Malcom (14.6)
	19th, Tiffany Young (11.4)
Rebounding:	6th, Tiffany Young (7.3)
	8th, Tiara Malcom (7.0)
	10th, Tracey Howell (6.6)
Field Goal Pct.:	4th, Tiara Malcom (.488)
Free Throw Pct.:	5th, Tiffany Young (.800)
	7th, Liz Hayes (.773)
	12th, Tiara Malcom (.735)
Steals:	3rd, TyresaSmith (2.31)
Blocked Shots:	3rd, Tiara Malcom (1.62)
	4th, Tracey Howell (1.06)
	8th, Tyresa Smith (0.88)
3 Point FG Pct.:	14th, Liz Hayes (.328)



**Block Party**

Scoring defense is not the only category that Delaware is tops in the CAA. The Blue Hens are averaging a league-high 4.44 blocks per game and **Tiara Malcom** (3rd -- 1.71), **Tracey Howell** (4th -- 1.06), and **Tyresa Smith** (8th -- 0.88) all rank in the top ten in the league.

**Big Shots**

Freshman point guard **Liz Hayes** has been hitting the important shots this year for the Blue Hens. On two occasions (Richmond & Drexel), **Hayes** has hit a three-pointer at the end of regulation to send the contest to an extra session. **Hayes** has also scored in double-figures on six occasions this season, including a career-high 17 points against St. John's, shooting 6-9 from the field and 3-4 from long-range. **Hayes** is averaging 7.5 ppg, fourth-best on the team. She also leads the team in made three-pointers with 20 (20-61, .328 Pct.), which puts her 10th in made three-pointers in UD program history.

**There's No Place Like Home**

Having two home-losses in a season is some what of an anomaly for the Blue Hens. The last time the Hens lost two games at home in the same season dates back to the 1998-99 when they were still in the America East. Despite its two losses this season at home, Delaware's home record is nothing to scoff at. Since the 1999-00 season, the Blue Hens are 51-5 at the **Bob Carpenter Center**. To put that into perspective, Delaware has won over 90% of its home contests over the last four years and over 75% of its home games in the past seven years.

**Keeping the Tradition Alive**

Over the past four years, the Delaware women's basketball team has recorded four consecutive 20-win seasons (21-8 in 1999-00, 26-5 in 2000-01, 23-7 2001-02, & 22-9 in 2002-03). Delaware has amassed 108 wins in the last five years, ranking 32nd among all Division I women's basketball programs for wins (entering the 2003-04 season). In addition to the numerical success, the Blue Hens have advanced to three consecutive post season tournaments, appearing in the NCAA Regionals in 2001 and in the WNIT in 2002 and 2003.

**The DishFactor**

Passing the rock is a necessity in basketball and to the Blue Hens, each assist has an extra significance. In 2001-02, the Blue Hens were a perfect 16-0 when they had more or equal the assist total of their opponent, but just 7-7 when they lost the assist battle. Last season, Delaware was 11-1 when it won the assist battle and 11-8 when it did not. The Hens are now 6-0 when they win or tie the assist battle in 2003-04.

**Games Delaware Won/Tied Assist Battle**

Opp.	UD-Opp	Assists	Results
La Salle	11-7	W	(69-47)
Navy	10-9	W	(69-57)
St. John's	14-11	W	(59-44)
UNCW	11-9	W	(57-56)
Hofstra	15-9	W	(78-47)
VCU	10-10	W	(66-56)

**Young in 2003-04**

Junior forward **Tiffany Young's** improvement as a player is obvious. After averaging just 1.8 ppg in 02-03, **Young** has stepped it up 2003-04. Before this season, **Young** had never scored in double-digits. Now, **Young** has had two twenty-point performances and two double-doubles with 12 points and a career-high 14 rebounds against William & Mary on January 9 and 12 points and 14 rebounds against Virginia Commonwealth on January 18. As Delaware's second-leading scorer (11.4 ppg), she tallied her first 20 point game against Fairfield in the championship game of the Coca-Cola Classic, earning her a spot on the all-tournament team. Against Manhattan, **Young** reached the 20 point mark for the second time, surpassing it with 21 points and 11-14 shooting from the foul line.

**Bench Boosters**

Delaware's bench has provided some clutch plays at key moments this season. Sophomore guard **Amanda Blackstone**, freshman point guard **Alena Koshansky**, sophomore guard **Karleena Tobin**, and reserve freshman guard **Tyresa Smith** have all come off the bench at one point to provide a spark for the Blue Hens.

◆ **Alena Koshansky** set a career-high in points with 12 versus Hofstra, connecting on all of her shots (3-3 FG, 4-4 FT). She also scored 10 first-half against Virginia Commonwealth, including hitting 2-3 from behind the three-point line. She also was a big part of the late Blue Hen rally vs. George Mason, as she hit two threes late in the second half.

◆ **Karleena Tobin** saw her first significant action of the season against Hofstra, coming off the bench to score a career-high eight points in a career-high 13 minutes. **Tobin** shot 4-4 from the floor against the Pride and also added four points versus the VCU Rams.

◆ **Amanda Blackstone** tied her career-high of six points, set against Stony Brook, and set a new career-high with four rebounds in the Hens' 69-47 win over the La Salle. On November 25, **Blackstone** played 11 minutes--all in the second-half--scoring six points and grabbing three rebounds against Stony Brook. Against the Hofstra Pride, **Blackstone** scored four points, hitting both of her field goals, in just six minutes of action

◆ **Tyresa Smith's** play coming off the bench had been so fierce to earn her first career start against Hofstra on January 15. In the conference losses to William & Mary and Old Dominion, **Smith** came off the bench to score in double-digits (15 pts vs. UNCW, 12 pts vs. ODU) to earn a place in the starting line-up. Against Hofstra, **Smith** tied the all-time record for steals in a game (8)..

**On This Date In...1976..**

In Delaware's fifth varsity session, the Hens defeated Elizabethtown, 78-30, at the Delaware Field House. The Hens finished the 1975-76 season with a 12-6 mark, under then-head coach and current senior associate athletic director **Mary Ann Hitchens**.

### Hitting the Freebies

Delaware is shooting **70.9 percent from the foul line** this season, ranking second in the CAA. **Liz Hayes, Tiffany Young and Amanda Blackstone** are all shooting over 75% from the charity stripe. Hayes and Young rank in the top 10 in the league in free throw percentage. Delaware has connected on 304 of 429 attempts while its opponents have shot just 61.4 percent (159-259) from the line. Delaware averages 19 points from the foul line per game. Delaware has not shot lower than 57.9 percent from the foul line (vs. Drexel, 1/25) this season. The solid shooting is no surprise as Delaware led the CAA in free throw percentage in 2002-03 with 73.4%.

### Transfer Tales--Part I, II & III

This year's squad carries three players with unique playing backgrounds in redshirt sophomore **Arek Deng**, junior **Kristy Gaines** and red-shirt junior **Geneva Livingston**.

♦Deng, native of Sudan, is eligible this year after transferring from Maryland. As a Terp, Deng appeared in four games in 2001-02, before a broken ankle ended her season.

♦Gaines also has a Maryland background in her collegiate career. Gaines' story is that of a journey-man. A native of Newman, GA, Gaines began her career at Southern Mississippi in 2000-01 before transferring to Maryland and taking a redshirt year. Gaines, who never saw action at Maryland, then transferred to Hagerstown (MD) Junior College and averaged 16.1 points and 7.8 rebounds per game last season.

♦Livingston comes to Delaware from the University of New Hampshire where she averaged 10.4 ppg as the team's No. 2 scorer. She will sit out the 2003-04 season per NCAA transfer regulations.

### It's My Party

Freshman **Alena Koshansky's** 19th birthday has the potential to be extra sweet. If the Hens continue their winning tradition and advance to the conference finals, Delaware could vie for the conference championship on Koshansky's 19th birthday (3/13). **Geneva Livingston** (1/1), **Arek Deng** (1/13), and **Tiara Malcom** (1/24) recently celebrated birthdays.

### Twin Factor

Experience and excellent credentials may not be the only requirement to be a coach at Delaware. Having a twin in the family may also be a prerequisite. Three out of four members of the coaching staff have a twin connection in their family. Head coach **Tina Martin** and associate head coach **Jeanine Radice** are both twins -- Martin is an identical twin while Radice has a fraternal twin sister. Assistant coach **Tyrone Perry** also has twin fraternal siblings.

### The Leftovers from 2002-03

Even though the numbers below do not seem very promising, the Blue Hens are used to picking up scoring slack when teammates have left the nest. In the last three seasons, Delaware has lost five 1,000 point scorers. Also, going into the 2002-03 season, the squad had lost over thirty percent of their scoring from 2001-02 and still managed to finish 22-9.

	Returning Statistics			
	02-03 Totals	Return	Lost	%Return
Points	1852	913	939	49.3%
FG Made	636	290	346	45.6%
FG Att	1595	749	846	47.0%
3FG Made	52	21	31	40.4%
3FG Att	188	87	101	46.3%
FT Made	528	312	216	59.1%
FT Att	719	414	305	57.6%
Rebounds	1058	617	441	63.4%
Off Reb	373	235	138	63.0%
Def Reb	685	382	303	55.8%
Assists	343	103	240	30.0%
Turnovers	571	238	333	41.7%
Blocks	95	49	46	51.6%
Steals	320	128	192	40.0%
Minutes	6225	2943	3282	47.3%

### Homecoming

Who says you can't go home again? Well, Thomas Wolfe did, but clearly **Carrie Timmins** wasn't listening. The former standout point guard returns to Delaware this year in a new capacity--assistant coach. Timmins, who will earn her bachelor's degree in health and exercise sciences from Delaware in December, averaged 6.4 points last season and ranked among the CAA leaders in assists (91) and steals (28). She also played in 111 games as a Blue Hen (8th all-time). Timmins also joins another fellow Delaware grad and standout player turned assistant coach, **Tyrone Perry**. Perry, in his fifth year coaching at UD, was an assistant with the men's team for two years and is now entering his third season with the women's basketball team.

### It Runs in the Family

Center **Arek Deng** is one of eight children, and basketball must run in her family's genes. Her older brother, Ajou, played for the Fairfield basketball team while her younger brother, Luol, a freshman at Duke, is considered one of the nation's best rookies -- if not the best -- in the class of 2003-04. Also, her cousin, Gai, plays for the Fairfield men's basketball team. Gai, a 6'9" center, averaged 12.9 points per game and finished fourth in the nation for blocked shots with 3.8 per game last year.

### A December to Remember

Delaware completed the month of December with a perfect 5-0 record. The Blue Hens made it through the month of November with a 3-1 record, improving on last year's November record of 0-3. In the past two months of December, Delaware has compiled a perfect 10-0 mark.

### ♦ Game-by-Game Starters ♦

**Richmond (L78-80 OT)**  
Hayes, Sailer, Howell, Malcom, Young

**Stony Brook (W 67-58)**  
Hayes, Sailer, Howell, Malcom, Young

**Brown (W 60-47)**  
Hayes, Sailer, Howell, Malcom, Young

**Fairfield (W 61-51 OT)**  
Hayes, Sailer, Howell, Malcom, Young

**La Salle (W 69-47)**  
Hayes, Sailer, Howell, Malcom, Young

**Navy (W 69-57)**  
Hayes, Sailer, Howell, Malcom, Young

**St. John's (W 59-44)**  
Hayes, Sailer, Howell, Malcom, Young

**Loyola (W 54-25)**  
Hayes, Sailer, Howell, Malcom, Young

**Manhattan (W 63-42)**  
Hayes, Sailer, Howell, Malcom, Young

**UNC Wilmington (W 57-56)**  
Hayes, Sailer, Howell, Malcom, Young

**William & Mary (L56-68)**  
Hayes, Sailer, Howell, Malcom, Young

**Old Dominion (L56-67)**  
Hayes, Sailer, Howell, Malcom, Young

**Hofstra (W 78-47)**  
Hayes, Sailer, **Smith**, Howell, Malcom,

**Virginia Commonwealth (W 66-56)**  
Hayes, Sailer, **Smith**, Howell, Malcom,

**George Mason (L64-71)**  
Hayes, Sailer, **Smith**, Howell, Malcom,

**Drexel (W 58-57 OT)**  
**Koshansky, Smith**, Howell, Malcom, Young

\*\*BOLD indicates line-up change



◆ Updating the Program Records ◆

**Career Scoring Leaders**

No.	Name	Years	Pts.
1.	Cindy Johnson (G)	1997-2001	1,675
2.	Colleen McNamara (C)	1991-1995	1,560
3.	Debbie Eaves	1986-1990	1,551
4.	Lori Howard	1977-1981	1,469
5.	Danielle Leyfert	1997-2001	1,447
6.	Sharon Wisler	1986-1990	1,420
7.	Meg McDowell	1982-1986	1,236
8.	Shanda Piggott	1994-1998	1,223
9.	Lisa Cano	1984-1988	1,188
10.	Christina Rible	1998-2002	1,181
11.	Jennifer Riley	1989-1992	1,165
12.	Megan Dellegrotti	1998-2002	1,112
13.	Denise Wojciech	1992-1996	1,091
14.	Sharon Howett	1974-1978	1,089
15.	Donna Werner	1980-1984	1,088
16.	Merel van Zanten	1990-1994	1,049
17.	Allison Trapp	2000-2003	1,030
18.	Molly Larkin	1989-1993	1,017
19.	Cynthia Phipps	1980-1984	976
20.	Kathie Malloy	1980-1984	884
21.	Sarah Gause	1983-1986	880
22.	Bev Santee	1991-1995	862
23.	Sue Whitfield	1984-1988	851
24.	Keisha McFadgion	1995-1998	847
25.	<b>TIARAMALCOM</b>	<b>2001-PRESENT</b>	<b>814</b>
26.	Robin Stoffel	1986-1990	768
27.	<b>JULIE SAILER</b>	<b>2001-PRESENT</b>	<b>765</b>
28.	Linda Cyborski	1988-1992	764
29.	Linn Price	1979-1984	724
30.	Karen Conlin	1974-1978	716

**Field Goal Percentage (Min. 250 att.)**

No.	Name	Years	Pct.
1.	Donna Werner (F)	1980-84	.493
2.	Kathie Malloy	1980-84	.488
3.	Daphne Joy	1986-90	.487
4.	Sharon Wisler	1986-90	.486
5.	Colleen McNamara	1991-95	.483
6.	<b>TIARA MALCOM</b>	<b>2001-PRESENT</b>	<b>.478</b>
7.	Marian Moorer	1984-87	.476
8.	Sarah Gause	1983-86	.473
9.	Debbie Eaves	1986-90	.469
10.	Jen Riley	1989-92	.463

**Three-Point Field Goals**

No.	Name	Years	FG
1.	Megan Dellegrotti (G)	1998-02	154
2.	Linda Cyborski	1988-92	98
3.	Bev Santee	1991-95	91
4.	Jen Lipinski	1989-93	76
5.	Keisha McFadgion	1995-98	64
6.	Lindsay Davis	1998-02	63
7.	Kristen Stout	1995-98	51
8.	<b>JULIE SAILER</b>	<b>2001-PRESENT</b>	<b>37</b>
9.	Bridget McCarthy	1987-91	34
10.	<b>LIZ HAYES</b>	<b>2003-PRESENT</b>	<b>20</b>

**Career Rebounding Leaders**

No.	Name	Years	Reb.
1.	Colleen McNamara (C)	1991-95	1,063
2.	Sharon Howett	1974-78	1,009
3.	Debbie Eaves (F)	1986-90	992
4.	Christina Rible	1998-02	975
5.	Sharon Wisler	1986-90	875
6.	Donna Werner	1980-84	873
7.	Shanda Piggott	1994-98	862
8.	Lori Howard	1977-81	801
9.	Meg McDowell	1982-86	748
10.	Kathie Malloy	1980-84	691
11.	Danielle Leyfert	1997-2001	645
12.	Christine Cole	1999-2003	623
13.	Jennifer Riley	1989-92	582
14.	Denise Wojciech	1992-96	564
15.	Cindy Johnson	1997-2001	541
16.	Sarah Gause	1983-86	530
17.	Merel van Zanten	1990-94	509
18.	<b>TIARAMALCOM</b>	<b>2001-PRESENT</b>	<b>501</b>
19.	Molly Larkin	1989-93	499
20.	Lindsay Davis	1998-02	484
21.	Robin Stoffel	1986-90	474
22.	Lisa Cano	1984-88	445
23.	Jackie Porac	1995-1998	443
24.	<b>TRACEY HOWELL</b>	<b>2000-PRESENT</b>	<b>416</b>
25.	Mary Wisniewski	1972-76	405

**Free Throw Percentage (Min. 80 Attempts)**

No.	Name	Years	Pct.
1.	Linda Cyborski (G)	1988-92	.852
2.	Megan Dellegrotti	1998-02	.839
3.	<b>JULIE SAILER</b>	<b>2001-PRESENT</b>	<b>.811</b>
4.	Carolyn Hartsky	1983-87	.807
5.	Jennifer Riley	1989-92	.795
6.	Allison Trapp	1999-03	.780
7.	Jen Lipinski	1989-93	.772
8.	<b>TIARA MALCOM</b>	<b>2001-PRESENT</b>	<b>.767</b>
9.	Linda Malouf	1985-89	.761
	Lindsay Davis	1998-02	.761

**Blocked Shots**

No.	Name	Years	Blocks
1.	Colleen McNamara (C)	1991-95	197
2.	Debbie Eaves	1986-90	177
3.	Paula Polyanski	1983-86	155
4.	Sarah Gause	1983-86	115
5.	Christine Cole	1999-03	108
6.	Suzanne Street	1997-00	79
7.	Merel van Zanten	1990-94	77
8.	<b>TIARAMALCOM</b>	<b>2001-PRESENT</b>	<b>65</b>
9.	<b>TRACEY HOWELL</b>	<b>2000-PRESENT</b>	<b>54</b>
10.	Cheryl Gittings	1978-82	44

◆ *Season & Career Highs* ◆

**#4 ~ Liz Hayes**

**#25 ~ Tiffany Young**

**2003-04 Season Highs:**  
**Points:** 17 vs. St. John's, 12/8  
**Rebounds:** 3, three times  
**Assists:** 3, three times  
**Steals:** 4 vs. Fairfield, 11/30  
**Blocks:** n/a  
**FTAtt.:** 6 vs. Loyola (MD), 12/7  
**FT Made:** 6 vs. Loyola (MD), 12/7  
**FG Att.:** 9, twice  
**FG Made:** 6 vs. St. John's, 12/8  
**Minutes:** 35 vs. Richmond, 11/22

<b>2003-04 Season Highs</b>	<b>Career Highs:</b>
<b>Points:</b> 21 vs. Manhattan, 12/22	same
<b>Rebounds:</b> 14 vs. William & Mary, 1/9	same
<b>Assists:</b> 2, twice	same
<b>Steals:</b> 3 vs. Manhattan, 12/22	same
<b>Blocks:</b> 3 vs. Virginia Commonwealth, 1/18	same
<b>FTAtt.:</b> 14 vs. Manhattan, 12/22	same
<b>FT Made:</b> 11 vs. Manhattan, 12/22	same
<b>FG Att.:</b> 13, twice	same
<b>FG Made:</b> 8 vs. Fairfield, 11/30	same
<b>Minutes:</b> 33 vs. Fairfield, 11/30	same

**#12 ~ Alena Koshansky**

**#31 ~ Kristy Gaines**

**2003-04 Season Highs:**  
**Points:** 12 vs. Hofstra, 1/15  
**Rebounds:** 3, twice  
**Assists:** 3 vs. Stony Brook, 11/25  
**Steals:** 5 vs. Hofstra, 1/15  
**Blocks:** n/a  
**FTAtt.:** 4 vs. Hofstra, 1/15  
**FT Made:** 4 vs. Hofstra, 1/15  
**FG Att.:** 7 vs. Stony Brook, 11/25  
**FG Made:** 3, twice  
**Minutes:** 24 vs. Stony Brook, 11/25

**2003-04 Season Highs**  
**Points:** 7 vs. Richmond, 11/21  
**Rebounds:** 8 vs. Richmond, 11/21  
**Assists:** n/a  
**Steals:** n/a  
**Blocks:** n/a  
**FTAtt.:** n/a  
**FT Made:** n/a  
**FG Att.:** 7 vs. Richmond, 11/22  
**FG Made:** 3 vs. Richmond, 11/22  
**Minutes:** 17 vs. Richmond, 11/22

**#15 ~ Julie Sailer**

**#32 ~ Amanda Blackstone**

<b>2003-04 Season Highs</b>	<b>Career Highs:</b>
<b>Points:</b> 16, twice	21, twice
<b>Rebounds:</b> 9 vs. Drexel, 1/25	12 at UNCW (1/4/02)
<b>Assists:</b> 4 vs. Drexel, 1/25	4, three times
<b>Steals:</b> 4 vs. Navy, 12/5	3, three times
<b>Blocks:</b> n/a	1, five times
<b>FTAtt.:</b> 10, three times	12, twice
<b>FT Made:</b> 7, three times	10, twice
<b>FG Att.:</b> 14, twice	16 vs. Bucknell (12/8/02)
<b>FG Made:</b> 6 vs. Old Dominion, 1/11	7, three times
<b>Minutes:</b> 43 vs. Richmond, 11/22	

<b>2003-04 Season</b>	<b>Career Highs</b>
<b>Points:</b> 6, twice	same
<b>Rebounds:</b> 4 vs. LaSalle, 12/3	same
<b>Assists:</b> 3 vs. Fairfield, 11/30	same
<b>Steals:</b> 1, four times	2 at Richmond (11/22/02)
<b>Blocks:</b> 1 at UNCW, 1/4	1, twice
<b>FTAtt.:</b> 4, twice	same
<b>FT Made:</b> 3, twice	same
<b>FG Att.:</b> 5, twice	same
<b>FG Made:</b> 2 vs. Stony Brook, 11/25	same
<b>Minutes:</b> 19 vs. Fairfield, 11/30	same

**#22 ~ Karleena Tobin**

**#33 ~ Tiara Malcom**

<b>2003-04 Season Highs</b>	<b>Career Highs:</b>
<b>Points:</b> 8 vs. Hofstra, 1/15	same
<b>Assists:</b> 1, three times	same
<b>Rebounds:</b> 3 vs. Drexel, 1/25	same
<b>Steals:</b> 2 vs. Hofstra, 1/15	same
<b>Blocks:</b> n/a	n/a
<b>FTAtt.:</b> n/a	n/a
<b>FT Made:</b> n/a	n/a
<b>FG Att.:</b> 4 vs. Hofstra, 1/15	same
<b>FG Made:</b> 4 vs. Hofstra, 1/15	same
<b>Minutes:</b> 14 vs. Drexel, 1/25	same

<b>2003-04 Season Highs</b>	<b>Career Highs</b>
<b>Points:</b> 31 vs. George Mason, 1/22	same
<b>Rebounds:</b> 11, three times	16 vs. JMU (1/30/03)
<b>Assists:</b> 4 vs. George Mason, 1/22	4, twice
<b>Steals:</b> 3, three times	7 vs. Towson (3/6/03)
<b>Blocks:</b> 3, six times	5 at Richmond (11/22/02)
<b>FTAtt.:</b> 18 vs. Richmond, 11/22	same
<b>FT Made:</b> 12 vs. Richmond, 11/22	13, vs. Old Dominion (2/2/03)
<b>FG Att.:</b> 15, twice	same
<b>FG Made:</b> 11, vs. George Mason, 1/22	same
<b>Minutes:</b> 43 vs. Richmond, 11/22	same

**#23 ~ Tyresa Smith**

**#40 ~ Arek Deng**

**2003-04 Season Highs:**  
**Points:** 15 vs. William & Mary, 1/9  
**Rebounds:** 9 vs. LaSalle, 12/3  
**Assists:** 4 vs. Hofstra, 1/15  
**Steals:** 8 vs. Hofstra, 1/15  
**Blocks:** 3 vs. Loyola (MD) 12/14  
**FTAtt.:** 8 vs. Virginia Commonwealth, 1/18  
**FT Made:** 6 vs. Old Dominion, 1/11  
**FG Att.:** 15 vs. Drexel, 1/25  
**FG Made:** 6, twice  
**Minutes:** 29 vs. Drexel, 1/25

**2003-04 Season Highs:**  
**Points:** 2 at Loyola, 12/14  
**Rebounds:** 4 vs. Brown, 11/29  
**Assists:** 1 vs. Navy, 12/5  
**Steals:** 2 vs. Brown, 11/29  
**Blocks:** 1 vs. UNC Wilmington, 1/4  
**FTAtt.:** 2 vs. Brown, 11/29  
**FT Made:** 1 vs. Brown, 11/29  
**FG Att.:** 1, three times  
**FG Made:** 1 vs. Loyola, 12/14  
**Minutes:** 9 vs. vs. UNC Wilmington, 1/4

**#24 ~ Jayne Boyer**

**#50 ~ Tracey Howell**

<b>2003-04 Season Highs</b>	<b>Career Highs:</b>
<b>Points:</b> n/a	4, twice
<b>Rebounds:</b> 1, twice	3, twice
<b>Assists:</b> 1 vs. LaSalle, 12/3	1, twice
<b>Steals:</b> n/a	2, twice
<b>Blocks:</b> 1 vs. LaSalle, 12/3	1, twice
<b>FTAtt.:</b> n/a	5 vs. Boston University (2/8/01)
<b>FT Made:</b> n/a	4 vs. American (12/17/00)
<b>FG Att.:</b> n/a	3 vs. Hofstra (12/29/01)
<b>FG Made:</b> n/a	1, four times
<b>Minutes:</b> 1, three times	14 at George Mason (12/6/00)

<b>2003-04 Season Highs</b>	<b>Career Highs:</b>
<b>Points:</b> 10 vs. William & Mary, 1/9	12 vs. W&M (1/26/03)
<b>Rebounds:</b> 11, twice	same
<b>Assists:</b> 4, twice	6 vs. Marist (12/23/02)
<b>Steals:</b> 4 vs. Stony Brook, 11/25	4, twice
<b>Blocks:</b> 3 vs. Stony Brook, 11/25	3, twice
<b>FTAtt.:</b> 6 vs. Manhattan, 12/22	10 vs. W&M (1/26/03)
<b>FT Made:</b> 3, five times	6 vs. W&M (1/26/03)
<b>FG Att.:</b> 7 vs. St. John's, 12/8	9, twice
<b>FG Made:</b> 4, twice	5, twice
<b>Minutes:</b> 38 vs. UNC Wilmington, 1/4	same

**Game Notes ◆ Game 17 ◆ Delaware (12-4, 4-3) vs. Towson (8-8, 0-7)**

◆ *Miscellaneous Stats* ◆

*Scoring Trends*

**Led in scoring\*** ..... '03-04 (w-1) Career (w-1) Consec.

Tiara Malcom.....12 (9-3) .....46 (34-12).....5

Tiffany Young.....10 (7-3) .....10 (7-3)

Julie Sailer .....8 (6-2) .....41 (33-8)

Liz Hayes.....6 (5-1) .....6 (5-1) .....1

Tyresa Smith .....5 (3-2) .....5 (3-2) .....1

Tracey Howell.....1 (0-1) .....4 (3-1)

Alena Koshansky .....2 (2-0) .....2 (2-0)

\*includes games tied for team-high

**Double-digit points** .... '03-04 (w-1) Career (w-1) Consec.

Tiara Malcom.....12 (9-3) .....46 (34-12).....5

Tiffany Young.....10 (7-3) .....10 (7-3)

Julie Sailer .....8 (6-2) .....41 (33-8)

Liz Hayes.....6 (5-1) .....6 (5-1) .....1

Tyresa Smith .....5 (3-2) .....5 (3-2) .....1

Tracey Howell.....1 (0-1) .....4 (3-1)

Alena Koshansky .....2 (2-0) .....2 (2-0)

**20-plus points**..... '03-04 (w-1) Career (w-1) Consec.

Tiara Malcom.....4 (2-2) .....6 (3-3)

Tiffany Young .....2 (2-0) .....2 (2-0)

*Other Streaks*

**Consecutive Games Played**

Tiara Malcom .....77.....(first action 11/23/01)

TraceyHowell.....58 .....(DNP1/20/02)

Julie Sailer .....45.....(DNP 11/30/02)

Tiffany Young .....44.....(DNP12/4/02)

Liz Hayes.....16.....(first start 11/22/03)

Alena Koshansky .....16.....(first action 11/22/03)

Tyresa Smith .....16.....(first action 11/22/03)

Karleena Tobin.....3 .....(DNP1/11/04)

Amanda Blackstone .....1 .....(DNP1/22/04)

**Consecutive Games Started**

Tiara Malcom .....47

TraceyHowell.....16

TyresaSmith.....4

Alena Koshansky.....1

Tiffany Young.....1

*Second Chance Points*

**Game-by-Game** .....UD-Opp.....Game Result

Richmond^ .....12-13.....78-80 OT (L)

at Stony Brook .....15-6.....67-58(W)

Brown.....12-17 .....60-47 (W)

Fairfield^ .....6-7.....61-51 OT (W)

La Salle .....18-14 .....69-47 (W)

Navy .....23-9.....69-57 (W)

at St. John's.....9-7 .....59-44 (W)

at Loyola (MD) .....20-6 .....54-25(W)

Manhattan.....12-9.....63-42 (W)

at UNC Wilmington .....16-5.....57-56 (W)

at William & Mary.....12-6 .....56-68 (L)

Old Dominion .....14-6 .....56-67 (L)

Hofstra .....7-16.....78-47 (W)

VCU.....8-11 .....66-56 (W)

at George Mason .....8-9.....64-71 (L)

at Drexel.....N/A.....58-57 OT (W)

Towson

at James Madison

at Va.Commonwealth

Wilm. & Mary

James Madison

at Hofstra

at Old Dominion

UNC Wilmington

Drexel

at Towson

George Mason

ALLTELCAA Tourn.

*Rebounding Trends*

**Led in Rebounds\*** ..... '03-04 Career Consec.

Tracey Howell .....7 .....14

Tiara Malcom.....5 .....25 .....2

Tiffany Young.....4 .....4

Julie Sailer .....1 .....4

Tyresa Smith.....1 .....1

\*includes games tied for team-high

**Double-digit rebound'**'03-04 Career Consec.

Tiara Malcom.....3 .....13 .....2

TraceyHowell.....3 .....5

Tiffany Young.....2 .....2

**Double-Doubles**..... '03-04 Career Consec.

Tiara Malcom.....3 .....11 .....2

Tiffany Young.....2 .....2

*Win/Loss Margins*

**Points Margin**.....Wins.....Losses

1 .....2

2 .....1

3

4

5

6

7 .....1

8

9 .....1

10 .....2

11-15 .....3 .....2

16-19.....

20+.....4

*FT Shooting in Final 2:00*

**Game-by-Game** .....FT-FTA .....Game Result

Richmond^ .....5-6 .....78-80 OT (L)

at Stony Brook.....4-4.....67-58(W)

Brown.....4-7.....60-47 (W)

Fairfield^ .....8-10.....61-51 OT (W)

La Salle .....0-0.....69-47 (W)

Navy .....1-2.....69-57 (W)

at St. John's.....0-0.....59-44 (W)

at Loyola (MD) .....0-0.....54-25(W)

Manhattan .....3-4.....63-42 (W)

at UNC Wilmington .....7-11 .....57-56 (W)

at William & Mary .....0-1 .....56-68(L)

Old Dominion .....3-4 .....56-57 (L)

Hofstra .....0-0.....78-47 (W)

VCU .....2-6.....66-56 (W)

at George Mason .....4-4 .....64-71 (L)

at Drexel.....3-4.....58-57 OT (W)

Towson

at James Madison

at Va.Commonwealth

Wilm. & Mary

James Madison

at Hofstra

at Old Dominion

UNC Wilmington

Drexel

at Towson

George Mason

ALLTELCAA Tourn.

^includes overtime

Totals: 44-63 (69.8%)

*Bench Scoring*

**Game-by-Game** .....UD-Opp. ....Game Result

Richmond.....10-18 .....78-80 OT (L)

at Stony Brook.....15-20.....67-58(W)

Brown .....9-13 .....60-47 (W)

Fairfield.....4-20.....61-51 OT (W)

La Salle .....24-11 .....69-47 (W)

Navy .....17-16.....69-57 (W)

at St. John's.....4-5.....59-44 (W)

at Loyola (MD) .....18-6.....54-25(W)

Manhattan.....11-5 .....63-42 (W)

at UNC Wilmington .....8-16 .....57-56 (W)

at William & Mary .....16-20 .....56-68 (L)

Old Dominion .....14-9 .....56-67 (L)

Hofstra .....32-24 .....78-47 (W)

VCU .....26-10 .....66-56 (W)

at George Mason.....20-17 .....64-71 (L)

at Drexel .....17-2 .....58-57 OT (W)

Towson

at James Madison

at Va.Commonwealth

Wilm. & Mary

James Madison

at Hofstra

at Old Dominion

UNC Wilmington

Drexel

at Towson

George Mason

ALLTELCAA Tourn.

Totals: 245-210

*Single Game Superlatives*

**Largest Delaware Lead:**

33, twice

**Largest Delaware Deficit:**

21 vs. Old Dominion, 37-58, (10:07, 2nd Half)

**Largest Delaware Lead in a Loss:**

14, vs Richmond, 34-20 (2:17, 1st Half)

**Largest Delaware Deficit in a Win:**

7, twice

**Largest Delaware Halftime Lead:**

27, vs. Hofstra (42-15) (1/15/04)

**Largest Delaware Halftime Deficit:**

17, vs. Old Dominion (37-20) (1/11/04)

**Largest Delaware Win:**

31, vs. vs. Hofstra, 78-47 (1/15/04)

**Largest Delaware Loss:**

12, vs. William & Mary, 56-68 (1/9/04)

**Best Delaware FG%:**

52.0 vs. vs. Hofstra (1/15/04)

**Worst Delaware FG%:**

24.6 vs. Brown

**Best Opponent FG%:**

51.9 by Old Dominion (1/11/04)

**Worst Opponent FG%:**

20.0 vs. Loyola (MD)

**Best Delaware FT%:**

84.2 vs. Fairfield

**Worst Delaware FT%:**

57.9 vs. Drexel (11-19) (1/25/04)

**Least Points by Delaware in First Half:**

19 vs. UNC Wilmington (1/4/04)

**Most Points by Delaware in First Half:**

42 vs. Hofstra

**Least Points an Opponent in First Half:**

7 by. Loyola (MD)

**Most Points by Opponent in First Half:**

38 by William & Mary (1/9/04)

**Least Points by Delaware in Second Half:**

18 vs. Drexel (1/25/04)

**Most Points by Delaware in Second Half:**

41 vs. Navy

**Least Points an Opponent in Second Half:**

18 by Loyola (MD)

**Most Points by Opponent in Second Half:**

44 by George Mason (1/22/04)

◆ Radio & TV Chart ◆

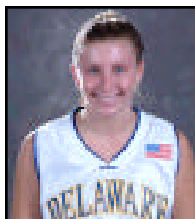
**#4**

*Liz Hayes*

Fr. ♦ Guard ♦ 5-7  
Easton, PA

PPG \_\_\_ RPG \_\_\_

APG \_\_\_ Misc. \_\_\_



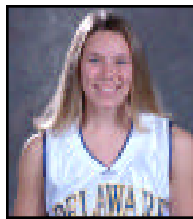
**#12**

*Alena Koshansky*

Fr. ♦ Guard ♦ 5-8  
Fairfax, VA

PPG \_\_\_ RPG \_\_\_

APG \_\_\_ Misc. \_\_\_



**#14**

*Jackie Gordon*

Jr. ♦ Guard ♦ 5-3  
Lower Gwynedd, PA

PPG \_\_\_ RPG \_\_\_

APG \_\_\_ Misc. \_\_\_



**#15**

*Julie Sailer*

Jr. ♦ Guard ♦ 5-11  
Washington Crossing,  
PA

PPG \_\_\_ RPG \_\_\_

APG \_\_\_ Misc. \_\_\_



**#22**

*Karleena Tobin*

So. ♦ Guard ♦ 5-8  
Baltimore, MD

PPG \_\_\_ RPG \_\_\_

APG \_\_\_ Misc. \_\_\_



**#23**

*Tyresa Smith*

Fr. ♦ Guard ♦ 5-10  
Dover, DE

PPG \_\_\_ RPG \_\_\_

APG \_\_\_ Misc. \_\_\_



**#24**

*Jayne Boyer*

Sr. ♦ Forward ♦ 6-2  
Lancaster, PA

PPG \_\_\_ RPG \_\_\_

APG \_\_\_ Misc. \_\_\_



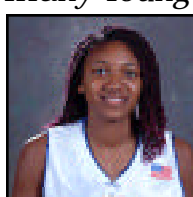
**#25**

*Tiffany Young*

Jr. ♦ Forward ♦ 6-2  
Fairfax, VA

PPG \_\_\_ RPG \_\_\_

APG \_\_\_ Misc. \_\_\_



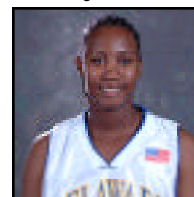
**#31**

*Kristy Gaines*

Jr. ♦ Center ♦ 6-1  
Newman, GA

PPG \_\_\_ RPG \_\_\_

APG \_\_\_ Misc. \_\_\_



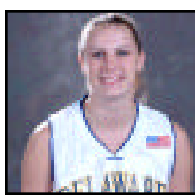
**#32**

*Amanda Blackstone*

So. ♦ Guard ♦ 6-0  
Schenectady, NY

PPG \_\_\_ RPG \_\_\_

APG \_\_\_ Misc. \_\_\_



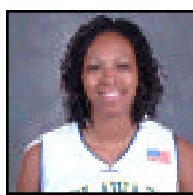
**#33**

*Tiara Malcom*

Jr. ♦ Forward ♦ 6-1  
Wilmington, DE

PPG \_\_\_ RPG \_\_\_

APG \_\_\_ Misc. \_\_\_



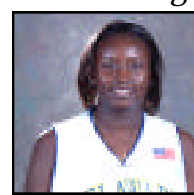
**#40**

*Arek Deng*

So.-r ♦ Center ♦ 6-4  
London, England

PPG \_\_\_ RPG \_\_\_

APG \_\_\_ Misc. \_\_\_



**#50**

*Tracey Howell*

Sr. ♦ G/F ♦ 6-0  
Newark, DE

PPG \_\_\_ RPG \_\_\_

APG \_\_\_ Misc. \_\_\_



*Head  
Coach*

*Tina Martin*

8th Season at  
Delaware  
(Lock Haven '86)

