

University of Delaware Fightin' Blue Hens



2010-11 Season Game #2 Media Notes • Tuesday, Nov. 16, 2010 • 7 p.m. • Bob Carpenter Center • Newark, Del.
Radio Coverage: The Ticket AM 1290 • Tom Byrne, Play-By-Play • James Taylor, Color • www.am1290.com

2010-11 Schedule & Results

Nov. 12	UMBC.....	W 59-44
Nov. 16	Villanova.....	7 p.m.
Nov. 20	at Yale.....	7 p.m.
Nov. 23	St. Francis (Pa.).....	7 p.m.
Nov. 28	at La Salle.....	1 p.m.
Dec. 1	Princeton.....	7 p.m.
Dec. 5	at Navy.....	2 p.m.
Dec. 19	at Penn State.....	2 p.m.
Dec. 22	Saint Joseph's.....	6 p.m.
Dec. 29	vs. Vanderbilt #.....	5 p.m.
Dec. 30	vs. Va. Tech/Alcorn State #.....	5/7 p.m.
Jan. 2	Hofstra *.....	2 p.m.
Jan. 6	at Northeastern *.....	7 p.m.
Jan. 9	at Drexel *.....	2 p.m.
Jan. 13	William & Mary *.....	7 p.m.
Jan. 16	Old Dominion *.....	2 p.m.
Jan. 20	at UNC Wilmington *.....	7 p.m.
Jan. 23	at Georgia State *.....	2 p.m.
Jan. 30	Hofstra *.....	2 p.m.
Feb. 3	Northeastern *.....	7 p.m.
Feb. 6	Drexel *.....	2 p.m.
Feb. 10	at Towson *.....	7 p.m.
Feb. 13	at William & Mary *.....	2 p.m.
Feb. 17	at George Mason *.....	7 p.m.
Feb. 20	James Madison *.....	3 p.m.
Feb. 24	Virginia Commonwealth *.....	7 p.m.
Feb. 27	at Old Dominion *.....	3 p.m.
Mar. 2	Towson *.....	7 p.m.
Mar. 10-13	CAA Tournament.....	TBA

The Show Place Arena
Upper Marlboro, Md.

Hilton Garden Hokie Classic at Va. Tech
* Colonial Athletic Association Game



Louviers
FEDERAL CREDIT UNION

2010-11 Numerical Roster

No.	Name	Yr.	Pos.	Ht.	Hometown/High School (Last School)	PPG	RPG	A	B	S
2	Jocelyn Bailey **	Jr.	G	6-0	Kensington, Md./The Bullis School	3.0	7.0	0	1	0
3	Jaquetta May *	So.	G	5-9	Wilmington, Del./Delcastle	3.0	7.0	2	1	3
4	Meghan McLean **	Jr.	G	5-9	Pittsburgh, Pa./Upper St. Clair	2.0	2.0	0	0	0
5	Vanessa Kabongo **	Jr.	G	5-10	Toronto, Canada/Eastern Commerce	1.0	4.0	0	0	1
10	Kayla Miller *	Jr.	G	5-8	Wilmington, Del./Ursuline Academy (G. Washington)	—	—	—	—	—
11	Elena Delle Donne *	So.	F/G	6-5	Wilmington, Del./Ursuline Academy	36.0	7.0	1	2	1
12	Danielle Parker *	So.	F	6-2	Phoenix, Md./Dulaney	7.0	3.0	0	0	0
13	Kelsey Buchanan	Fr.	C	6-3	South Riding, Va./Freedom	0.0	3.0	0	0	0
20	Eva Riddick ***	Sr.	F	6-3	Rochester, N.Y./Rush-Henrietta	2.0	8.0	0	1	2
22	Lauren Carra *	So.	G	5-9	Dunmore, Pa./Dunmore	5.0	6.0	4	0	1
45	Chelsea Craig	So.	F	6-2	Rockville, Md./Wootton	—	—	—	—	—
51	Sarah Acker	Jr.	C	6-3	Nanticoke, Pa./Greater Nanticoke (Saint Joseph's)	—	—	—	—	—
55	Jasmine Gibson **	Jr.	C	6-3	New Castle, Del./Sanford	—	—	—	—	—

Delaware (1-0, 0-0 CAA) vs. Villanova (1-0, 0-0 BIG EAST)

Game #2 • Tuesday, Nov. 16, 2010 • 7 p.m.

Presented By Louviers Federal Credit Union



Delaware Probable Starters

G #22	Lauren Carra	So.	5-9
G #2	Jocelyn Bailey	Jr.	6-0
G #3	Jaquetta May	So.	5-9
F #11	Elena Delle Donne	So.	6-5
F #20	Eva Riddick	Sr.	6-3

Villanova Probable Starters

G #2	Rachel Roberts	So.	5-9
G #3	Jesse Carey	So.	5-10
F #12	Lindsay Kimmel	Jr.	6-0
F #21	Amanda Swiezyński	Sr.	6-0
F #33	Laura Sweeny	So.	6-2

The Series...

Villanova leads the all-time series 3-2 ... Tuesday's meeting will be the sixth all-time ... the game will mark the Wildcats' third trip to Newark ... Delaware has won the last two contests (52-49 in 2008, 68-63 in 2007) ... the Hens' largest margin of victory is five (68-63 in 2007) ... Villanova's largest margin of victory is 21 (83-62 win in 1989) ... four current Hens played the last time the teams met on Dec. 22, 2008 (Riddick, Kabongo, Bailey and McLean) ... Kabongo and Riddick each started the last meeting ... only two current Villanova players saw time in the last meeting (Swiezyński, Scanlon) ... Delaware did not hit a three-pointer in the last meeting (only one attempt) ... both teams shot 45 percent from the floor.

UD Overall Series Record: 2-3

UD vs. Villanova in Newark: 1-2

UD vs. Villanova in Villanova: 1-1

UD vs. UMBC at Neutral Site: 0-0

GENERAL INFORMATION

Location Newark, Delaware 19716
Founded 1743
Enrollment 16,000 Undergraduates
Nickname Fightin' Blue Hens
Official Mascot YoUDEe
Colors Royal Blue & Gold
Arena; Bob Carpenter Center (Frank Acierno Arena)
Capacity 5,000
Affiliation NCAA Division I
Conference Colonial Athletic Association
President Dr. Patrick T. Harker
NCAA Faculty Representative Dr. John L. Burmeister

STAFF

Dir. of Athletics & Rec. Services Bernard M. Muir
Senior Associate AD Samantha Huge
Associate AD, SWA Susan Groff
Associate AD, Business Ops. Scott Eatough
Associate AD, External Rel.
..... Stacey Bunting-Thompson
Associate AD, Rec. Services Jake Olkkola
Assistant AD, Rec. Services Dr. Barry Miller
Assistant AD, Compliance Brian Baptiste
Student-Athlete
Eligibility/Financial Aid Coord. Kerri Cebula
Director, Athletics Development Dr. Scarlett Schmidt
Assist. AD, Sports Medi. Physician Dr. Andrew Reisman
Sports Medicine Physician Dr. Geoffrey Gustavsen
Sports Medicine Nurses Lisa Sinclair, Mary Zagar
Head Athletic Trainer John Smith
Associate Head Athletic Trainer Joan Couch
Assistant Athletic Trainers Dan Watson,
Courtney Butterworth, Erin McLaughlin (WBB)
Strength & Conditioning Coach Auggie Maurelli

MEDIA RELATIONS

Athletics Media Relations Phone // Fax 302-831-2186 // 8653
Assistant Athletic Director, Media Relations. Scott Selheimer
Assistant Sports Information Director Kevin Tritt
Sports Information Intern
(Women's Basketball Contact)
John C. Stark
Stark's Cell Phone 570-809-1946
Stark's E-Mail starkj@udel.edu
Sports Information Interns Dan Lauletta, John Stark
BCC Press Row Phone 302-831-8715
Internet Address www.bluehens.com
Athletics Media Relations Linda McCormick

Mailing Address
631 South College Avenue
Bob Carpenter Center
Newark, Del. 19716

Gameday Interviews

Delaware head coach Tina Martin holds a press conference in the BCC Auditorium, room 102, approximately 10 minutes after the game following a cooling off period and her postgame show with the Blue Hen Basketball Radio Network.

Selected players will also be available outside the locker room as well, usually while Coach Martin is conducting her radio interview. The University of Delaware locker room is closed to members of the media during regular season competition.

Quote sheets will be done by the UD Athletics Media Relations staff for both teams, if requested, and will be available in the media room.

Pregame interview requests for players or assistant coaches should also be made prior to gameday. Approval is on a case-by-case basis.

Non-Gameday Interviews

All requests to interview players or coaches during the week should be made through the Athletics Media Relations Office and at least one day in advance so that academic or athletic schedules are not disrupted.

Credentials/Press Row

Requests for press credentials and parking passes should be made to Scott Selheimer. Please make arrangements at least two days in advance of each game.

Press row at Bob Carpenter Center/Acierno Arena is located at course side opposite the player and game officials' benches. All press guests are required to show a pass for admittance to the arena.

The media entrance is located in the rear of the building (loading dock) on the east side of the Bob Carpenter Center. Parking is located in the rear of the Bob Carpenter Center.



The Series Game By Game

Villanova leads 3-2

1988-89.....	Villanova, 73-55
1989-90.....	Villanova, 83-62
1990-91.....	Villanova, 58-53
2006-07.....	Delaware, 68-63
2008-09.....	Delaware, 52-49

Scouting Villanova

The Wildcats opened their season with a convincing 57-42 victory over Big 5 foe La Salle in front of a crowd of 733 Friday afternoon at The Pavilion in Villanova, Pa.

Villanova had two players, Lindsay Kimmel and Sarah Jones, reach double figures, with Kimmel leading the game, scoring 15. Laura Sweeney led all players with eight boards while Jesse Carey and Amanda Swiezynski each handed out four assists.

The Wildcats' probable starters combined for 39 of Villanova's 57 points (68.4 percent). Carey went perfect on the day, hitting her only three-point attempt while going four-for-four from the free throw line, finishing with seven points.

Villanova generated 63.1 percent of its offense from beyond the arc, hitting 12 of their 29 attempts (41.4 percent). Kimmel led the team, hitting five of her 13 attempts while Sarah Jones hit all three of her three-pointers.

When Last They Met...

VILLANOVA, Pa. -- Sophomore forward Ariene Jenkins (at right) posted her second double-double of the year and sophomore guard Tesia Harris (12 pts, nine rebounds) had her sixth double-digit scoring performance, leading the University of Delaware women's basketball team to its fourth straight win, 52-49 at The Pavilion in Villanova, Pa.

The Blue Hens, who came into this game ranked eighth in the country in scoring defense, put on a defensive clinic in the first half, allowing just 13 points, the lowest point total in a half allowed by the Hens all year. They held Villanova scoreless for a stretch of 7:34, and took a 22-13 lead into the first half.

Only two Villanova players made a field goal in the first half and they were Laura Kurz (4-6, nine points) and Kyle Dougherty (1-4, two points). As a team, the Wildcats shot 5-27 (18 percent) and 1-14 (7.1 percent) from behind the arc.

Delaware might have pulled away in the first half, but the Blue Hens only shot 32.3 percent from the field in that half, led by Harris and Kabongo who scored six apiece. When Villanova did score, Delaware always seemed to have an answer.

Delaware vs. Villanova

2010-11 Stats

UD (1-0)	vs.	Villanova (1-0)
59.0.....	Points.....	57.0
44.0.....	Points Allowed.....	42.0
.346.....	Field Goal %.....	.373
.455.....	3-Point %.....	.414
.720.....	Free Throw %.....	.875
48.0.....	Rebounds.....	35
+17.0.....	Rebounding Margin.....	+2.0
7.....	Assists.....	17
23.....	Turnovers.....	13
8.....	Steals.....	3
5.....	Blocks.....	4

UD's Last Five

vs. Drexel - W, 67-61 - 3/12/10
vs. Hofstra - W, 59-41 - 3/3/10
vs. Georgia Mason - W, 58-41 - 3/11/10
vs. Richmond - L, 67-53 - 3/13/10
vs. UMBC - W, 59-44 - 11/12/10

UD's Next Five

vs. Villanova - 11/16/10 - 7 p.m.
at Yale - 11/20/10 - 7 p.m.
vs. St. Francis (Pa.) - 11/23/10 - 7 p.m.
at La Salle - 11/28/10 - 1 p.m.
vs. Princeton - 12/1/10 - 7 p.m.

Delaware vs. America East

After downing UMBC, Delaware is 67-66 all-time against the current members of the America East Conference. Delaware holds an even record of 66-66 overall against the current members of the America East Conference. The Hens hold winning series versus Boston University (18-8), Hartford (16-7), UMBC (7-3) and Stony Brook (3-0). Three America East foes hold winning series; Maine (6-17), New Hampshire (10-12) and Vermont (7-19). Delaware has never played Albany or Binghamton.

Delaware and The Big 5

This season, the Blue Hens will take on three of the Philadelphia Big 5, which is comprised of Villanova (Nov. 16), La Salle (away Nov. 28), Saint Joseph's (Dec. 22), Pennsylvania and Temple. Last season, the Hens played just one of the Big 5, defeating La Salle 54-46 at home on Dec. 13.

All-time, Delaware is 31-44 against the Big 5, and holds winning series over Pennsylvania (9-6) and Temple (10-9).

Media Coverage

UD Basketball on the Net:

Delaware athletics information is available via the internet through www.bluehens.com. Box scores and game stories are typically posted within an hour of the conclusion of each UD basketball game, while cumulative statistics are also updated and posted after each contest. Media notes are available in a PDF format within 24 hours of the start of each game. In addition, livestats are available for all UD home games.

UD Basketball on the Radio:

For the sixth straight season, all Delaware women's basketball games will be broadcast the radio. All games will be carried on The Ticket, 1290 AM. John Sadak (play-by-play) and Matt Janus (color) will call all the action. Additionally, most UD women's basketball games are broadcast by the UD student radio station, WVUD 91.3 FM. Real Audio links for both broadcasts are available through the UD Web site.

UD Basketball on Television:

The University of Delaware women's basketball team will appear on television twice during the 2010-11 regular season as announced by the Colonial Athletic Association at the league's Media Day. The Blue Hens will make their television appearances on Sunday, Feb. 20 and Sunday, Feb. 27. UD hosts James Madison on Feb. 20 and the game will serve as Delaware's **Pink Zone game**. Tipoff is set for 3 p.m. The Hens' next TV appearance will be on Sunday, Feb. 27 when Delaware travels to Old Dominion for a 3 p.m. tip. The games will be broadcast on The ComcastSports Net and The Comcast Network.

Watch Us On The Web

University of Delaware basketball fans who can't make it to the Bob Carpenter Center to catch the Blue Hens will now be able to see the action live on the UD athletics web site.

For the first time all Blue Hen men's and women's basketball home games will be webstreamed live available at www.bluehens.com.



Last Time Out

NEWARK, Del. – Thanks to Elena Delle Donne, the University of Delaware women's basketball team started the season off with a bang Friday night.

The sophomore All-American, who was named to virtually every pre-season national player of the year watch list, once again proved her value as one of the nation's top players as she poured in 36 points and led the Blue Hens to a season-opening 59-44 non-league women's basketball victory over UMBC Friday night before 2,079 fans at the Bob Carpenter Center.

The 6-5 Delle Donne scored 19 points in the opening half to help the Hens to a 29-18 lead at the break and keyed the Delaware attack in the second half as Delaware held off a second half surge by the Retrievers (0-1). The 36 points was the fourth highest single game total in school history and most ever by a Delaware player on opening night.

The Hens, coming off a 21-12 record a year ago when they advanced to the Women's National Invitation Tournament, won their seventh straight season opener and seventh straight home opener but had to grind it out. The Hens, ranked No. 24 in Collegelinsider.com Mid-Major Top 25 poll, shot just 34.6 percent from the field (18 of 52) and committed 23 turnovers but they controlled the board by a wide 48-31 margin as five different players pulled down six or more caroms.

Eva Riddick, the team's lone senior, led the way with eight rebounds while Delle Donne and junior Jocelyn Bailey each collected seven boards and sophomore Lauren Carra added six rebounds, five points, and a team-high four assists.

Delle Donne, the 2011 Colonial Athletic Association Player and Rookie of the Year who ranked fourth in the country with a 26.7 scoring average, reached the 30-point mark for the ninth time in her short career and surpassed the 20-point plateau for the 25th time in 30 career games. She hit just 13 of 29 shots from the field but drained four three-pointers and hit all six of her free throws to lead the Delaware attack. The 36 points was the third highest scoring game of her career, trailing only a 54-point effort at James Madison and a BCC-record 39-point outburst at home against Buffalo last season.

UMBC, coming off a 13-17 record a year ago, turned the ball over 18 times and shot just 28.1 percent from the field, going just 16 of 57 from the field and 6 of 19 from beyond the three-point arc. The Retrievers made just 7 of 30 first half shots, scoring just four points in the first 10 minutes as they fell behind 13-4 midway through the half.

Preseason Plaudits

Now in her second season with the Blue Hens, sophomore guard/forward Elena Delle Donne has landed on major Preseason Watch Lists.

Most recently, Delle Donne was one of 50 players named to the Naismith Trophy Preseason Watch List. On Nov. 3, she earned votes for the Associated Press Preseason All-America Team. Prior to the first day of practice



List.

In conference, Delle Donne was selected as a Co-Player of the Year with James Madison's Dawn Evans. Both players were named to the CAA Preseason All-Conference team as well.

Record Breaking Season

At the end of the 2009-10 season, sophomore Elena Delle Donne broke 18 school records, including the freshman and school season while also resetting the CAA mark, racking up 774 points. She averaged a conference and school record 26.7 points per game. James Madison foe Dawn Evans holds the second-place record, also set last season, but scored 2.1 points per game less than Delle Donne on average.

The two hot handed players combined for 92 points on Feb. 18, 2010. Delle Donne shattered the single game scoring record of 51, set by Keri Chaconas on Feb. 17, 1995.

Delle Donne's mark in that game was the highest point total in a single game last season, men's or women's. As she set the

it was announced that she was on the Wooden Award Watch List on Oct. 5. She was making national waves even before the school year started, as it was announced on Aug. 4 that she was on Wade Player of the Year Watch

The Last Time...

UD Went To Overtime...
3/12/10 vs. Drexel (at JMU/W, 67-61 OT)

UD Went To Double Overtime...
1/17/10 vs. Drexel (L, 70-67 2OT)

UD Scored 100 Points...
2/27/81 vs. Temple (W 101-96 OT)

UD Allowed 100 Points...
2/13/97 at Maine (L 54-102)

UD Was Held Under 40 Points...
3/12/09 vs. Towson (L 37-40)

UD Held An Opponent Under 40 Points...
2/7/08 vs. VCU (W 42-37)

UD Made Five 3-PT FGs...
11/12/10 vs. UMBC (5-11)

An Opponent Made Five 3-PT FGs...
11/12/10 vs. UMBC (6-19)

A Blue Hen Scored 20 Points...
11/12/10 vs. UMBC, Elena Delle Donne (36)

An Opponent Scored 20 Points...
3/12/10 vs. Drexel (at JMU), Gabriela Marginean (27)

A Blue Hen Scored 25 Points...
11/12/10 vs. UMBC, Elena Delle Donne (36)

An Opponent Scored 25 Points...
3/12/10 vs. Drexel (at JMU), Gabriela Marginean (27)

A Blue Hen Scored 30 Points...
11/12/10 vs. UMBC, Elena Delle Donne (36)

An Opponent Scored 30 Points...
2/18/10 at JMU, Dawn Evans (38)

A Blue Hen Grabbed 10 Rebounds...
3/3/10 vs. Hofstra, Danielle Parker (11)
3/3/10 vs. Hofstra, Elena Delle Donne (10)

An Opponent Grabbed 10 Rebounds...
3/18/10 vs. Richmond, Crystal Goring (13)

A Blue Hen Grabbed 15 Rebounds...
2/8/10 vs. GMU, Elena Delle Donne (15)

An Opponent Grabbed 15 Rebounds...
2/28/10 at Towson, Katrina Wheeler (18)

A Blue Hen Had 10 Assists...
11/29/99 at Lafayette, Christine Koren (10)

An Opponent Had 10 Assists...
1/24/10 at Hofstra, Candice Bellocchio (10)

A Blue Hen Had Five Blocks...
3/3/10 vs. Hofstra, Elena Delle Donne (7)

An Opponent Had Five Blocks...
3/3/10 vs. Hofstra, Jess Fuller (5)

A Blue Hen Had A Double-Double...
3/3/10 vs. Hofstra, Elena Delle Donne (27pts/10 rbs), Danielle Parker (10 pts/11 rbs)

An Opponent Had A Double-Double...
3/13/10 vs. ODU (at JMU), Tia Lewis (10 pts/11 rbs)



mark in the JMU Convocation Center, she surpassed Navy's David Robinson in the single game record of 50, which is also the CAA men's single game record.

Delaware Did You Knows?

- The average height of a Delaware women's basketball player is 6-foot?
- Delaware returns nine point scorers who combined for 1,503 points?
- The Hens return 72.6 percent of last season's offense production?
- Delaware scored 100 more points in the second half than it did in the first half all of last season?
- Delaware has played in 1,010 games in the 39 year history of the program, averaging nearly 26 per season?
- Delaware improved to 37-25 on Friday games under head coach Tina Martin?
- The Blue Hens have won seven season openers in a row and are now 14-1 under coach Martin in home openers?

• Delle Donne took over a quarter of the games shots versus UMBC? She took 29 of the 109 in the contest (26.6 percent).

Record By Starting Five

Delle Donne, Riddick, Bailey, Kabongo, Carra 2-0

Experience Counts

Today's probable starters (Bailey, May, Delle Donne, Riddick and Carra) combined to make 77 starts last season and despite



the lineup's youth (three freshman, one sophomore and one junior in 09-10), they combined to record 177 games played, logging 3,336 minutes of game time.

Record-Breaking Numbers

A Feb. 4 crowd of 2,042 in attendance at the Blue Hens 84-55 routing of William & Mary, broke the all-time women's basketball single-season attendance mark as they pushed the total to 23,584. This surpassed the previous record of 22,498 set during UD's 13-game 1996-97 campaign. The Hens finished their 13-game regular season with an overall attendance of 37,094, averaging 2,853 fans per game. Delaware destroyed the record, seating 14,596 more than the record that stood for over 12 seasons.

Pack the House

The attendance record for a Delaware women's basketball single game is 4,772 set on Feb. 11, 2005 against Old Dominion. The Hens were victorious over the Lady Monarchs, 62-58.

Att.	Date	Opponent	Result
4,772	2/11/05	vs. ODU.....	W 62-58
3,606	2/14/10	vs. Georgia State.....	W 68-65
3,142	2/25/10	vs. Northeastern.....	W 60-49
3,137	1/17/10	vs. Drexel.....	L 67-70 2OT
3,040	12/11/09	vs. Navy.....	W 67-50
3,014	2/19/06	vs. ODU.....	L 57-60
3,005	2/22/07	vs. #22 JMU.....	W 77-67
2,938	12/30/09	vs. UMass.....	W 57-55
2,901	1/3/10	vs. ODU.....	L 59-60
2,810	3/10/07	vs. JMU.....	L 56-67
2,805	1/28/10	vs. Towson.....	W 72-49
2,642	1/11/02	vs. #25 ODU.....	L 55-82

Making Mid-Major Waves

After going 21-12 last season and earning a bid to the Women's National Invitational Tournament (WNIT), the Blue Hens found themselves ranked No. 24 in the CollegelInsider.com Mid-Major Poll (Oct. 27, 2010). Delaware was joined on the poll by fellow CAA schools James Madison (3) and Old Dominion (11).

In addition to the CAA, the Mid-Major Poll is comprised of teams from the America East, Atlantic Sun, Big Sky, Big South, Big West, Great West, Horizon, Independents, Ivy, Metro Atlantic, Mid-American, Mid-Eastern, Missouri Valley, Northeast, Ohio Valley, Patriot, Southern, Southland, Southwestern, Summit, Sun Belt, West Coast.

Twenty-Win Milestone

Twenty or more wins is the key mark for

Delaware. The last seven times the Hens have surpassed 20 wins, they have advanced to either the NCAA Tournament or earned a berth in WNIT. Last season, Delaware hit the benchmark, going 21-12 overall and 11-7 in the Colonial Athletic Association, advancing to the semifinals of the conference tournament.

It's Been A While...

Associate Head Coach Jeanine Radice has been a staple at the University of Delaware. She is now entering her 15th season on the bench for the Hens, tying her for 17th amongst active assistant/associate head coaches in Division I women's basketball.

1,000th Program Game Played in 39th Season

Delaware played its 1,000th program game on Feb. 14, 2010. Its inception under the direction of head coach Mary Ann Campbell (Hitchens) took place in 1972, in which the Hens recorded a dominating 8-4 record. Thirty-eight seasons later, the Blue Hens played their 1,000th game against Georgia State University in the Bob Carpenter Center. This milestone also doubled as the Pink Zone game. UD's all-time record is 594-415 (.589).

- 1st Game:** Feb. 5, 1972
Delaware vs. Glassboro State W 58-56
- 50th Game:** Feb. 15, 1975
Delaware vs. Towson State W 62-57
- 100th Game:** Jan. 26, 1978
Delaware at Towson State W 75-65
- 250th Game:** March 3, 1984
Delaware vs. Towson State L 58-61 (ECC Tournament at Rider)
- 500th Game:** Feb. 6, 1993
Delaware at Drexel..... W 68-62
- 750th Game:** Jan. 29, 2002
Delaware vs. Pennsylvania..... W 79-58
- 1,000th Game:** Feb. 14, 2010
Delaware vs. Georgia State W 68-65

Martin Secures 250th Win

University of Delaware women's basketball head coach Tina Martin earned her 250th career victory on Jan. 28 as the Blue Hens placed five scorers in doubles figures and cruised to a 72-49 Colonial Athletic Association women's basketball triumph over Towson at the Bob Carpenter Center.

Martin, who with the win, improved to 250-155 (is now 258-161) in her 15th season at Delaware to become just the third active coach in the CAA to reach that win plateau.

Martin's first career victory as a head coach came on Nov. 22, 1996 against Delaware State.



She went on to defeat Vermont on Feb. 26, 2000 for her 50th win, before notching her 100th triumph on March 1, 2002 against Hofstra, her 150th victory over VCU on Jan. 2, 2005 and her 200th on Jan. 4, 2007 again over Hofstra.

Martin tipped-off her head coaching career at Delaware in the 1996-97 season after serving as an assistant coach at Seton Hall for nine seasons.

Home, Sweet Home

The Bob Carpenter Center has been kind to the Blue Hens since women's basketball played its first game, defeating Temple on Dec. 1, 1992. Since that day, the Hens have built their overall record to 161-70 (.696) in the Bob, including 134-48 (.736) under Coach Martin.

In conference and league tournaments, Delaware is 109-48 (.694) and holds a 93-36 (.702) record under Martin since she started coaching the Hens in 1996.

Miller Sidelined Following Back Surgery

Kayla Miller, a junior member of the University of Delaware women's basketball team, will be sidelined indefinitely following back surgery to repair a herniated disk.

Miller (at left) underwent surgery on Friday, Oct. 29 at Christiana Hospital in Newark, Del. to repair the disk and is expected to be out indefinitely. She could miss the entire 2010-11 season.

After sitting out the first nine games of the season due to NCAA transfer rules following her departure from George Washington, Miller tallied a team-high 74 assists, averaging 3.1 across her 24 games played. The 5-8 guard also tallied 27 steals and snagged 43 rebounds. During her time last season, she averaged 30.4 minutes a game, ranking her third on the team.

Miller, an exercise physiology major at the University, earned second-team All-CAA Academic Honors. She was Delaware's nominee for the conference's Dean Ehlers Leadership award, serving as a captain



both this season and last season. Miller was also presented the Joyce Perry Memorial Coaches' Award at the team's annual banquet.

Last season, Miller, a native of nearby Wilmington, Del. (Ursuline Academy), and the Blue Hens reached the semifinals of the CAA Tournament, falling to eventual runner up Old Dominion. Delaware (21-12) earned a bid to the Women's National Invitational Tournament (WNIT) where it hosted the University of Richmond before falling 67-49.

It's Not Just How You Start...

Delaware always seems to get off to a hot start, compiling a home-opener record of 28-11 in the programs 39 year history. The Hens win at a .719 percent clip in their first games at Newark.

Under Coach Martin, Delaware has a very impressive home opening record of 13-1 since her first season in 1996-97. The lone blemish came in 2003-04 to Richmond, a team that reached the semifinals of the WNIT that season.

The Hens are currently riding a six-game home opener winning streak, dating back to that same season.

...But Also How You Finish.

Delaware has won 30 of the program's 39 regular season finales, taking the wins .769 percent of the time, including last season's 59-41 rout of Hofstra in front of the home crowd on March 3.



Game #1	
UMBC	44
Delaware	59
November 12, 2010	
Bob Carpenter Center	

Delaware	Min	FG-A	FT-A	R	A	PF	PTS
Delle Donne.....	39	13-29	6-6	7	1	0	36
Riddick.....	26	1-2	0-3	8	0	1	2
Bailey.....	25	1-5	1-2	7	0	4	3
Kabongo.....	22	0-3	1-2	4	0	1	1
Carra.....	33	1-3	2-2	6	4	2	5
May.....	18	0-2	3-4	7	2	3	3
McLean.....	8	0-2	2-2	2	0	2	2
Parker.....	25	2-5	3-4	3	0	1	7
Buchanan.....	4	0-1	0-0	3	0	1	0
Totals	200	18-52	18-25	48	7	15	59
		.346	.720	(1)			

UMBC	Min	FG-A	FT-A	R	A	PF	PTS
Colabella.....	26	2-5	0-0	9	0	3	9
Obajolu.....	26	2-5	4-4	5	1	4	8
Kurowski.....	28	2-11	1-1	3	4	4	6
Brokans.....	21	0-1	0-0	0	1	2	0
Coles.....	22	0-5	1-2	5	0	2	1
Gerald.....	20	4-15	0-0	2	0	1	11
Barker.....	7	0-0	0-0	0	0	1	0
Brown.....	35	5-13	0-0	4	2	4	12
Lewis.....	15	1-2	0-0	2	0	2	2
Totals	200	16-57	6-7	31	8	23	44
		.281	.857	(1)			

UMBC.....	18	26	44
Delaware.....	29	30	59

Field Goal Pct. by Half: UD 9-28 (32.1)/9-24 (37.5) UMBC: 7-30 (23.3)/9-27 (33.3); **Three-Point Field Goals:** UD 5-11 (Delle Donne 4-8, Carra 1-1, McLean 0-2); UMBC 6-19 (Kurowski 1-6, Brokans 0-1, Gerald 3-7, Brown 2-5); **Blocks:** UD 5 (Delle Donne 2, Riddick 1, Bailey 1, May 1) UMBC 3 (Obajolu 2, Lewis 1) **Steals:** UD 8 (May 3, Riddick 2, Delle Donne 1, Kabongo 1, Carra 1) UMBC 5 (Coles 2, Obajolu 1, Gerald 1, Brown 1); **Turnovers:** UD 23 (Delle Donne 5, Carra 5, Kabongo 4, May 3, Riddick 2, Bailey 2, McLean 1, Parker 1) UMBC 18 (Brokans 4, Kurowski 4, Gerald 3, Brown 2, Colabella 2, Coles 2, Barker 1) **Officials:** Lewis, Harding Jr., Fisher; **Attendance:** 2,079

NEWARK, Del. - Thanks to Elene Delle Donne, the University of Delaware women's basketball team started the season off with a bang Friday night... The sophomore All-American, who was named to virtually every pre-season national player of the year watch list, once against proved her value as one of the nation's top players as she poured in 36 points and led the Blue Hens to a season-opening 59-44 non-league women's basketball victory over UMBC Friday night before 2,079 fans at the Bob Carpenter Center... The 6-5 Delle Donne scored 19 points in the opening half to help the Hens to a 29-18 lead at the break and keyed the Delaware attack in the second half as Delaware held off a second half surge by the Retrievers (0-1). The 36 points was the fourth highest single game total in school history and most ever by a Delaware player on opening night... The Hens, coming off a 21-12 record a year ago when they advanced to the Women's National Invitation Tournament, won their seventh straight season opener and seventh straight home opener but had to grind it out. The Hens, shot just 34.6 percent from the field (18 of 52) and committed 23 turnovers but they controlled the board by a wide 48-31 margin as five different players pulled down six or more caroms...UMBC turned the ball over 18 times and shot just 28.1 percent from the field, going just 16 of 57 from the field and 6 of 19 from beyond the three-point arc. The Retrievers made just 7 of 30 first half shots, scoring just four points in the first 10 minutes as they fell behind 13-4 midway through the half.

Blue Hens By The Numbers

	09-10	10-11
Home.....	11-3	1-0
Away.....	7-8	0-0
Neutral.....	3-1	0-0
vs. CAA at Home.....	7-2	0-0
vs. CAA on Road.....	4-5	0-0
in Overtime.....	1-3	0-0
Scoring 70+ points.....	7-1	0-0
Scoring -70 points.....	14-11	1-0
Allowing 70+ points.....	1-5	0-0
Allowing -70 points.....	20-7	1-0
Leading at Halftime.....	17-3	1-0
Trailing at Halftime.....	3-9	0-0
Tied at Halftime.....	1-0	0-0
Shoot 50%+ FG.....	3-1	0-0
Shoot -50% FG.....	17-12	1-0
Opponent shoots 50%+.....	0-1	0-0
Opponent shoots -50%.....	21-11	1-0
Shoot 70%+ FT.....	9-6	1-0
Shoot -70% FT.....	13-5	0-0
Opponent shoots 70%+ FT.....	9-10	1-0
Opponent shoots -70% FT.....	12-2	0-0
More or = turnovers.....	10-6	1-0
Less turnovers.....	11-6	0-0
Outrebounded or = Opp.....	18-3	1-0
Outrebounded by Opp.....	3-9	0-0
More or = Assists.....	6-2	0-0
Less Assists.....	15-10	1-0
At night.....	11-7	1-0
During the day.....	10-5	0-0
In November.....	2-2	1-0
In December.....	6-1	0-0
In January.....	5-4	0-0
In February.....	5-3	0-0
In March.....	3-2	0-0
Sunday.....	5-4	0-0
Monday.....	1-0	0-0
Tuesday.....	3-0	0-0
Wednesday.....	2-1	0-0
Thursday.....	6-4	0-0
Friday.....	3-0	1-0
Saturday.....	1-3	0-0
vs. Atlantic 10.....	2-1	0-0
vs. America East.....	2-0	1-0
vs. Atlantic Coast.....	0-0	0-0
vs. BIG EAST.....	0-0	0-0
vs. Big Ten.....	0-0	0-0
vs. CAA.....	13-8	0-0
vs. Conference USA.....	1-0	0-0
vs. Ivy League.....	0-2	0-0
vs. MEAC.....	0-0	0-0
vs. Mid-American.....	1-0	0-0
vs. Mountain West.....	0-1	0-0
vs. Northeast.....	1-0	0-0
vs. Ohio Valley.....	0-0	0-0
vs. Patriot League.....	1-0	0-0
vs. Southeastern.....	0-0	0-0
vs. Southwestern.....	0-0	0-0
vs. West Coast Conference.....	0-0	0-0

2001 NCAA East Regional Reynolds Coliseum • Raleigh, N.C.

Delaware	Min	FG-A	FT-A	R	A	PF	PTS
Leyfert.....	38	3-6	6-8	4	2	2	12
Rible.....	25	4-13	0-1	6	0	4	8
Cole.....	16	1-4	3-4	3	0	3	5
Dellegrotti.....	20	0-1	0-0	1	4	1	0
Johnson.....	36	7-20	6-7	5	0	2	20
Trapp.....	4	1-1	0-0	0	0	0	2
Timmins.....	20	0-3	1-2	2	2	0	1
Davis.....	33	4-7	0-1	5	3	1	9
Howell.....	8	0-0	0-0	1	0	0	0
Totals.....	200	20-55	16-23	28	11	13	57
	.364	.696	(1)				

N.C. State	Min	FG-A	FT-A	R	A	PF	PTS
Gardner.....	22	5-6	0-0	2	3	2	10
Moody.....	20	4-7	1-1	3	0	2	9
Scates.....	24	3-4	3-7	4	1	2	9
Lewis.....	30	3-12	4-4	5	3	2	10
Bates.....	20	2-6	0-0	4	3	3	4
Rivers.....	5	0-0	0-0	0	0	0	0
Hutcherson.....	19	0-0	0-0	4	7	2	0
Olanrewaju.....	16	1-4	0-0	8	2	3	2
Labador.....	4	2-2	0-0	1	0	0	5
Simpson.....	20	6-9	1-2	1	3	0	17
Greene.....	20	5-7	0-0	4	0	4	10
Totals.....	200	31-57	9-14	38	22	20	76
	.544	.643	(2)				

Delaware.....	27	30	57
North Carolina State.....	36	40	76

Three-point FG: D - 1-4, .250 (Davis, 1-2, Timmins, 0-1, Dellegrotti, 0-1); NCS - 5-14, .357 (Simpson, 4-6, Labador, 1-1, Lewis, 0-5, Bates, 0-2); Blocks: D - 2 (Cole, Davis), NCS - 3 (Lewis, 2, Gardner); Steals: D - 8 (Timmins, 3, Dellegrotti, Johnson, Leyfert, Cole, Davis), NCS - 5 (Lewis, 2, Gardner, Hutcherson, Simpson); Turnovers: D - 10 (Leyfert, 3, Johnson, 2, Cole, 2, Davis, 2, Trapp), NCS - 13 (Lewis, 5, Scates, 2, Simpson, 2, Bates, Moody, Hutcherson, Greene); Officials: Dock Sisk, Ken Nosek, Laurie Porter; Attendance: 2,623.

2002 Women's NIT Smith Center • Washington, D.C.

Delaware	Min	FG-A	FT-A	R	A	PF	PTS
Rible.....	35	5-13	4-6	7	5	2	14
Davis.....	27	2-7	2-2	5	1	2	8
Cole.....	15	1-3	0-0	4	0	3	2
Trapp.....	29	2-9	0-0	5	0	5	4
Dellegrotti.....	34	6-10	6-10	0	2	4	22
Timmins.....	7	0-0	2-2	0	1	1	2
Sailer.....	22	0-1	5-7	1	1	3	5
Malcom.....	28	2-4	9-10	5	1	1	13
Howell.....	3	0-0	0-0	0	0	0	0
Totals.....	200	18-47	28-37	28	11	21	71
	.383	.757	(1)				

GW	Min	FG-A	FT-A	R	A	PF	PTS
Montana.....	32	2-6	1-2	6	6	4	5
Darling.....	6	0-0	1-2	0	0	1	1
Oha.....	32	6-14	6-10	4	0	4	18
Joens.....	36	7-14	6-8	3	5	3	23
Dancause.....	18	0-2	0-0	3	2	4	0
Lawrence.....	35	10-11	3-4	7	2	3	23
Witherspoon.....	16	0-0	0-0	2	2	3	0
Outen Barlow.....	25	3-6	2-2	3	3	3	8
Totals.....	200	28-53	19-28	33	20	25	78
	.528	.679	(7)				

Delaware.....	33	38	71
George Washington.....	38	40	78

Three-point FG: UD - 7-12, .583 (Dellegrotti, 4-5, Davis, 2-4, Trapp, 1-2, Rible, 0-1), GW - 3-14, .214 (Joens, 3-8, Dancause, 0-1, Montana, 0-3, Lawrence, 0-1, Outen Barlow, 0-1); Blocks: UD - 1 (Howell), GW - 2 (Oha, 2); Steals: UD - 9 (Dellegrotti, 3, Cole, 2, Trapp, 2, Davis, 2), GW - 14 (Lawrence, 7, Outen Barlow, 3, Dancause, 2, Montana, 2); Turnovers: UD - 18 (Trapp, 5, Dellegrotti, 5, Timmins, 2, Sailer, 2, Malcom, 2, Howell, Cole), GW - 17 (Joens, 3, Dancause, 3, Montana, 3, Lawrence, 3, Outen Barlow, 3, Oha, Witherspoon); Officials: John Morningstar, Angela Lewis, Janice Aliberti; Attendance: 611.

2007 NCAA Greensboro Regional Breslin Center • East Lansing, Mich.

Delaware	Min	FG-A	FT-A	R	A	PF	PTS
DeHaven.....	34	5-15	1-2	4	2	4	12
Koshansky.....	36	2-6	1-2	3	3	1	6
Smith.....	39	7-25	5-8	5	1	4	19
Fisher.....	32	5-15	2-2	11	3	5	13
Ferguson.....	20	0-2	2-2	4	0	2	2
Thomas.....	2	0-0	0-0	0	0	0	0
Irving.....	27	3-6	0-0	10	0	3	6
Mundy.....	10	0-5	0-0	1	0	0	0
Totals.....	200	22-74	11-16	42	9	19	58
	.297	.688	(1)				

Mich. State	Min	FG-A	FT-A	R	A	PF	PTS
Johnson.....	35	4-10	2-2	4	2	2	13
Jefferson.....	26	3-14	4-6	7	2	3	10
Haynes.....	33	2-11	6-8	7	5	1	11
Lucas-Perry.....	32	4-7	1-1	9	3	2	12
DeHaan.....	24	5-8	3-4	9	0	3	13
Davidson.....	13	0-1	0-0	0	1	1	0
Wulff.....	7	0-1	0-0	2	0	0	0
Grantham.....	13	1-4	0-0	4	3	1	2
Bannister.....	13	2-4	1-1	5	0	2	5
Hall.....	4	1-2	1-1	2	0	0	3
Totals.....	200	22-62	18-23	54	16	15	69
	.355	.783	(5)				

Delaware.....	20	38	58
Michigan State.....	25	44	69

Three-point FG: D - 3-15, .200 (DeHaven, 1-4, Koshansky, 1-4, Fisher, 1-5, Mundy, 0-2); MSU - 7-17, .412 (Johnson, 3-5, Lucas-Perry, 3-5, Haynes, 1-5, Davidson, 0-1, Wulff, 0-1); Blocks: D - 4 (Ferguson, 3, Fisher), MSU - 11 (DeHaan, 6, Bannister, 3, Davidson, Grantham); Steals: D - 15 (DeHaven, 5, Smith, 4, Koshansky, 3, Irving, 2, Fisher), MSU - 5 (Lucas-Perry, 3, Johnson, Bannister); Turnovers: D - 10 (Fisher, 4, DeHaven, 3, Koshansky, Smith, Thomas), MSU - 19 (Haynes, 5, Lucas-Perry, 5, Johnson, 3, Jefferson, 2, DeHaan, 2, Davidson, Bannister); Officials: Denise Kantner, Karen J. Pence, Tommy Salerno; Attendance: 6,780.

2003 Women's NIT Alumni Fieldhouse • Philadelphia, Pa.

Delaware	Min	FG-A	FT-A	R	A	PF	PTS
Malcom.....	39	10-14	1-2	14	0	2	21
Sailer.....	30	4-12	2-2	7	1	3	10
Cole.....	32	0-2	2-2	5	1	5	2
Trapp.....	34	2-16	4-4	4	2	4	8
Timmins.....	31	0-2	0-0	1	3	3	0
Warren.....	15	1-5	1-2	0	3	0	3
Young.....	5	0-0	0-0	1	0	0	0
Howell.....	14	1-3	1-4	4	0	0	3
Totals.....	200	18-54	11-16	39	10	17	47
	.333	.688	(3)				

St. Joseph's	Min	FG-A	FT-A	R	A	PF	PTS
Mohan.....	35	2-4	2-2	8	7	3	7
Krasnoshiok.....	27	4-10	4-4	2	2	3	14
Graff.....	30	4-6	0-0	3	2	4	8
Brady.....	27	2-6	5-8	1	2	1	10
Mehmedic.....	34	4-6	1-1	3	5	2	12
Springman.....	13	1-2	2-2	0	0	2	5
McBryan.....	2	0-0	0-0	0	0	2	0
Pronga.....	1	0-0	0-0	0	0	0	0
Gross.....	18	2-3	1-1	0	0	1	5
McGahan.....	13	2-4	0-0	1	0	1	4
Totals.....	200	21-41	15-18	20	18	19	65
	.512	.833	(2)				

Delaware.....	21	26	47
Saint Joseph's (Pa.).....	33	32	65

Three-pt. FG: UD - 0-8, .000 (Sailer, 0-5, Trapp, 0-2, Timmins, 0-1), SJU - 8-12, .667 (Mehmedic, 3-5, Krasnoshiok, 2-2, Mohan, 1-1, Brady, 1-1, Springman, 1-1, McGahan, 0-2); Blocks: UD - 0; SJU - 4 (Graff, 4); Steals: UD - 9 (Cole, 3, Howell, 3, Malcom, Trapp, Warren), SJU - 14 (Mehmedic, 4, Mohan, 3, Brady, 3, Krasnoshiok, Graff, Springman, Gross); Turnovers: UD - 25 (Trapp, 6, Timmins, 5, Sailer, 5, Malcom, 4, Howell, 2, Young, Warren, Cole), SJU - 20 (Mohan, 5, Brady, 5, Krasnoshiok, 3, Springman, 3, Graff, 2, Mehmedic, Gross); Officials: Janice Aliberti, Marty Novitch, Bob McEntee; Attendance: 1,112.

2005 Women's NIT

March 17, 2005 • Bob Carpenter Center

Delaware	Min	FG-A	FT-A	R	A	PF
PTS						
Sailer.....	23	1-6	2-4	4	1	3
Malcom.....	40	3-10	4-9	7	1	1
Koshansky.....	27	3-4	0-0	1	2	0
Smith.....	33	1-7	2-2	5	2	4
Blackstone.....	26	1-7	0-2	5	2	1
Hayes.....	17	1-5	0-0	4	0	2
Young.....	21	4-12	0-0	7	2	5
Livingston.....	12	0-1	2-3	1	0	2
Irving.....	1	0-1	0-0	0	0	0
Totals.....	200	14-53	10-20	38	10	18
	.264	.500	(4)			

St. John's	Min	FG-A	FT-A	R	A	PF
PTS						
Clark.....	31	8-12	2-5	8	1	3
Chambers.....	23	1-2	0-1	6	1	2
Wright.....	30	3-11	0-0	7	7	2
Peterson.....	20	1-1	0-0	2	0	1
Walker.....	24	1-9	0-0	7	1	1
Jones.....	6	1-2	0-0	1	0	2
Dukes.....	1	0-0	0-0	0	0	0
Kurtosi.....	18	1-3	0-0	5	3	4
Petersen.....	1	0-0	0-0	0	0	0
Thompson.....	14	1-3	0-0	3	0	2
Barlow.....	32	2-11	5-6	3	0	2
Totals.....	200	19-54	7-12	45	13	19
	.352	.583	(3)			

St. John's	26	22	48
Delaware	22	20	42

Field Goal Pct. by Half: UD - 7-24 (.292)/7-29 (241)
 SJU - 10-28 (.357)/9-26 (.346) Three-Point Field Goals:
 UD - 4-11 (.364) (Sailer, 0-2, Koshansky, 3-4, Hayes, 1-5),
 SJU - 3-16, .188 (Wright, 2-6, Barlow, 1-7, Walker, 0-3);
 Blocks: UD - 1 (Blackstone), SJU - 7 (Chambers, 3, Clark,
 2, Walker, Thompson); Steals: UD - 11 (Koshansky, 3,
 Smith, 3, Malcom, 2, Hayes, Blackstone, Livingston), SJU
 - 9 (Wright, 3, Walker, 2, Clark, Peterson, Jones, Kurtosi);
 Turnovers: UD - 16 (Malcom, 3, Hayes, 3, Young, 3,
 Blackstone, 2, Hayes, Livingston), SJU - 21 (Wright, 6,
 Kurtosi, 5, Barlow, 2, Clark, 2, Chambers, 2, Peterson, 2,
 Thompson, Team); Officials: Tony Lippa, John Orminski,
 Dianna DePaul; Attendance: 992.

2006 Women's NIT

March 18, 2006 • Petersen Events Center

Delaware	Min	FG-A	FT-A	R	A	PF
PTS						
Koshansky.....	38	3-10	0-0	6	3	5
Czorniewy.....	37	8-16	4-4	3	1	2
Fisher.....	38	3-10	0-0	6	3	5
Smith.....	39	4-14	7-8	13	3	3
Tobin.....	2	0-1	0-0	0	0	0
Deng.....	19	2-3	0-0	1	0	3
Irving.....	29	1-7	4-4	5	0	4
Totals.....	200	20-60	15-16	38	12	18
	.333	.938	(4)			

Pittsburgh	Min	FG-A	FT-A	R	A	PF
PTS						
Stewart.....	32	2-7	3-4	3	4	3
C. Taylor.....	16	0-0	0-0	2	1	3
Walker.....	28	4-8	1-5	10	1	4
Winn.....	39	5-15	4-4	8	3	2
Zellous.....	32	3-10	5-8	4	3	2
Hughes.....	1	0-0	0-0	0	0	0
Lim.....	2	0-0	0-0	1	0	0
Brown.....	20	3-10	0-0	1	0	0
D. Taylor.....	25	5-7	2-2	4	0	0
Tafen.....	5	0-0	0-0	1	0	0
Totals.....	200	22-57	15-23	43	12	14
	.386	.652	(9)			

Delaware	25	32	57
Pittsburgh	30	34	64

Field Goal Pct. by Half: UD - 8-28 (.286)/12-32 (.375)
 P - 11-29 (.379)/11-28 (.393) Three-Point Field Goals:
 UD - 2-12 (.167) (Koshansky, 1-7, Czorniewy, 1-4, Fisher,
 0-1), P - 5-15, .333 (Winn, 3-9, Brown, 2-6); Blocks:
 UD - 0, P - 10 (Walker, 4, Zellous, 4, Winn, D. Taylor);
 Steals: UD - 3 (Koshansky, Smith, Irving), P - 5 (Stewart,
 Walker, Zellous, Brown, D. Taylor); Turnovers: UD - 11
 (Smith, 3, Czorniewy, 3, Fisher, 2, Irving, Deng, Team),
 P - 13 (Stewart, 4, Winn, 4, Brown, 2, D. Taylor, Walker,
 Lim); Officials: Michael Shields, Kathy Ridilla, Frank
 Steratore; Attendance: 1,012.

2010 Women's NIT

March 18, 2006 • Petersen Events Center

Delaware	Min	FG-A	FT-A	R	A	PF
PTS						
Koshansky.....	38	3-10	0-0	6	3	5
Czorniewy.....	37	8-16	4-4	3	1	2
Fisher.....	38	3-10	0-0	6	3	5
Smith.....	39	4-14	7-8	13	3	3
Tobin.....	2	0-1	0-0	0	0	0
Deng.....	19	2-3	0-0	1	0	3
Irving.....	29	1-7	4-4	5	0	4
Totals.....	200	20-60	15-16	38	12	18
	.333	.938	(4)			

Pittsburgh	Min	FG-A	FT-A	R	A	PF
PTS						
Stewart.....	32	2-7	3-4	3	4	3
C. Taylor.....	16	0-0	0-0	2	1	3
Walker.....	28	4-8	1-5	10	1	4
Winn.....	39	5-15	4-4	8	3	2
Zellous.....	32	3-10	5-8	4	3	2
Hughes.....	1	0-0	0-0	0	0	0
Lim.....	2	0-0	0-0	1	0	0
Brown.....	20	3-10	0-0	1	0	0
D. Taylor.....	25	5-7	2-2	4	0	0
Tafen.....	5	0-0	0-0	1	0	0
Totals.....	200	22-57	15-23	43	12	14
	.386	.652	(9)			

Delaware	25	32	57
Pittsburgh	30	34	64

Field Goal Pct. by Half: UD - 8-28 (.286)/12-32 (.375)
 P - 11-29 (.379)/11-28 (.393) Three-Point Field Goals:
 UD - 2-12 (.167) (Koshansky, 1-7, Czorniewy, 1-4, Fisher,
 0-1), P - 5-15, .333 (Winn, 3-9, Brown, 2-6); Blocks:
 UD - 0, P - 10 (Walker, 4, Zellous, 4, Winn, D. Taylor);
 Steals: UD - 3 (Koshansky, Smith, Irving), P - 5 (Stewart,
 Walker, Zellous, Brown, D. Taylor); Turnovers: UD - 11
 (Smith, 3, Czorniewy, 3, Fisher, 2, Irving, Deng, Team),
 P - 13 (Stewart, 4, Winn, 4, Brown, 2, D. Taylor, Walker,
 Lim); Officials: Michael Shields, Kathy Ridilla, Frank
 Steratore; Attendance: 1,012.

Colonial Athletic Association Standings as of Nov. 9, 2010

Team	CAA			OVERALL	
	W	L	%	W	L
Delaware	0	0	0.00	1	0
George Mason	0	0	0.00	1	0
Old Dominion	0	0	0.00	1	0
VCU	0	0	0.00	1	0
Drexel	0	0	0.00	0	0
UNC Wilmington	0	0	0.00	0	0
Georgia State	0	0	0.00	0	1
Hofstra	0	0	0.00	0	1
James Madison	0	0	0.00	0	1
Northeastern	0	0	0.00	0	1
Towson	0	0	0.00	0	1
William & Mary	0	0	0.00	0	1

Tonight's Games: St. Francis (Pa.) at Towson, 5 p.m.; Kent State at Northeastern 7 p.m.; Drexel at La Salle 7 p.m. **Wednesday's Game:** Winthrop at VCU 7 p.m.; **Thursday's Games:** Hofstra at Stony Brook 7 p.m., North Carolina A&T at Old Dominion 7 p.m., Towson at Maryland 7 p.m.

CAA Preseason Coaches' Poll Predicted Order of Finish

1) James Madison (2009-10 Champions); 2) Old Dominion; 3) Delaware; 4) Hofstra; 5) VCU; 6) Drexel; 7) William & Mary; 8) UNC Wilmington; 9) Georgia State; 10) George Mason; 11) Towson; 12) Northeastern

New Home for the CAA Tournament

For the first time in conference history, the women's basketball tournament will be held at a neutral site, rather than at the home court of the top-seeded team. The Show Place Arena, located in Upper Marlboro, Md., will serve as the new home to the CAA Women's Basketball Tournament, Presented by Virginia 529 College Savings Plan. The tournament is slated to take place from March 10-13.

CAA Dominance

The Blue Hens have tallied a 109-53 record in CAA regular-season play since its first conference game on Dec. 29, 2001 with a 71-66 victory over Hofstra in Newark. Delaware owns a .673 win percentage since the inaugural game eight seasons ago.



2010-11 Preseason All-Conference Teams

First Team

Brittany Blackwell.....UNC Wilmington
Elena Delle DonneDelaware
 Dawn EvansJames Madison
 Shante EvansHofstra
 Taysha PyeWilliam & Mary

Second Team

Shadasia Green..... Old Dominion
 Tarik HislopJames Madison
 Courtney Hurt..... VCU
 Tia Lewis Old Dominion
 Jasmine Parker..... Old Dominion

Honorable Mention

Kamile Nacickatie..... Drexel
 Brittany Pointdexter..... George Mason

CollegInsider.com Mid-Major Poll

Oct. 27, 2010

Rank	Team (First Place Votes)	Points
1)	Gonzaga (12)	709
2)	Green Bay (11)	693
3)	James Madison (7)	656
4)	Arkansas-Little Rock (1)	606
5)	Bowling Green	599
6)	Princeton	517
7)	Marist	461
8)	Liberty	457
9)	Middle Tennessee	440
10)	Hartford	395
11)	Old Dominion	369
12)	Lehigh	310
13)	Illinois State	297
14)	Florida Gulf Coast	284
15)	South Dakota State	276
16)	Toledo	241
17)	Chattanooga	233
18)	Vermont	228
19)	Oral Roberts	211
20)	Creighton	208
21)	Western Kentucky	173
22)	Butler	165
23)	Gardner-Webb	149
24)	Delaware	147
25)	St. Mary's	143

OTHERS RECEIVING VOTES: Missouri State 141, Boston University 139, Lamar 96, Montana 93, Eastern Illinois 73, East Tennessee State 73, **Virginia Commonwealth 61**, UC Davis 40, Appalachian State 37, Samford 33, Hampton 30, North Carolina A&T 25, Pepperdine 25, Central Arkansas 22, Iona 21, Eastern Michigan 20, Northern Iowa 20, Eastern Washington 18, Robert Morris 18, UC Riverside 17, American 14, Columbia 11, Southern University 11, Sacred Heart 10, South Carolina Upstate 9, Harvard 8, Oakland 7, High Point 6, Loyola Marymount 6, Kent State 5, Louisiana Tech 5, Portland State 5, Long Island University 2, UMBC 2, Stephen F. Austin 2, Cal Poly 1, Cleveland State 1, **Hofstra 1**.

Associated Press NCAA Divison I Poll

Nov. 15, 2010

Rank	Team (First Place Votes)	Points
1)	Connecticut (39)	992
2)	Baylor (1)	937
3)	Stanford	921
4)	Tennessee (W)	883
5)	Xavier	821
6)	Duke	804
7)	Ohio State	757
8)	Texas A&M	675
9)	Kentucky	664
10)	West Virginia	596
11)	Oklahoma	594
12)	Notre Dame	575
13)	Georgetown	513
14)	North Carolina	441
15)	UCLA	423
16)	Florida State	334
17)	Texas	319
18)	Georgia	270
19)	Iowa State	244
20)	St. John's (N.Y.)	191
21)	Maryland	165
22)	Iowa	150
23)	Vanderbilt	146
24)	TCU	146
25)	Michigan State	120

Others receiving votes: DePaul 62, California 54, Nebraska 25, LSU 23, Gonzaga 23, Kansas St. 22, Wis. Green Bay 21, USC 17, Penn St. 13, Wisconsin 11, Georgia Tech 10, Dayton 8, N.C. State 8, Northwestern 7, Kansas 6, Bowling Green 5, AR Little Rock 5, Tulane 3, Fresno St. 2, San Diego St. 1, Pittsburgh 1, **James Madison 1**, Miami (Fla.) 1.



**Delaware All-Time
in Pre-season Tournaments (0-1)**

Pre Season WNIT (0-1)

2000 Smith Center, Washington, D.C.
George Washington 78, Delaware 56

**Delaware All-Time
in Post Season Tournaments
(6-21)**

NCAA Tournament (0-2)

2001 East Regional
Reynolds Coliseum, Raleigh, N.C.
(4) N.C. State 76, (13) Delaware 57

2007 Greensboro Regional
Breslin Center, East Lansing, Mich.
(5) Michigan State 69, (12) Delaware 58

WNIT (0-4)

2002 Smith Center, Washington, D.C.
George Washington 78, Delaware 71

2003 Alumni Fieldhouse, Philadelphia, Pa.
Saint Joseph's 65, Delaware 47

2005 Bob Carpenter Center, Newark, Del.
St. John's 48, Delaware 42

2006 Petersen Events Center, Pittsburgh, Pa.
Pittsburgh 64, Delaware 57

**AIAW Tournament
EIAIW Regional (6-15)**

1972 at Towson, Md.
vs. Lock Haven.....W/56-50
vs. Monmouth.....L/50-51

1973 at Lock Haven, Pa.
vs. Federal City.....L/50-61
vs. Glassboro State.....L/58-86

1974 at New Brunswick, N.J.
vs. Slippery Rock.....L/48-76
vs. Lock Haven.....L/51-76

1975 at Glassboro, N.J.
vs. Maryland.....L/65-76
vs. Ursinus.....W/56-53
vs. West Chester.....L/64-84

1976 at Pittsburgh, Pa.
vs. Lock Haven.....L/64-91
vs. Rutgers.....W/97-56
vs. Penn State.....L/56-68

1977 at Philadelphia, Pa.
vs. Cheyney State.....L/57-70
vs. West Chester.....W/66-62
vs. Rutgers.....L/75-78

1978 at West Chester, Pa.
at West Chester.....L/53-60
vs. Temple.....W/76-67

1981 at Jersey City, N.J.
vs. West Chester.....W/51-47
vs. Morgan State.....L/64-87
vs. Mount St. Mary's....L/55-57 (OT)

**Delaware All-Time
in Conference Tournaments
(29-23 All-Time)**

East Coast Conference (14-6)

1983 Qtrs. American.....L/63-73

1984 Qtrs. vs. Bucknell.....W/64-37
Semis vs. Hofstra.....W/74-56
Final vs. Towson State.....L/58-61

1985 Qtrs. Hofstra.....W/88-67
Semis Lehigh.....L/61-69

1986 Qtrs. Drexel.....W/75-44
Semis vs. Lafayette.....W/62-55
Final vs. Lehigh.....L/59-72

1987 Qtrs. vs. Lehigh.....L/74-82

1988 Qtrs. vs. Lehigh.....W/80-78
Semis vs. Lafayette.....L/55-65

1989 Qtrs. vs. Rider.....W/73-64
Semis vs. Bucknell.....W/80-74
Final vs. Lafayette.....W/51-45

1990 Qtrs. vs. Bucknell.....W/83-66
Semis vs. Lehigh.....W/69-63
Final vs. Drexel.....W/67-58

1991 Semis vs. Drexel.....W/53-41
Final vs. Hofstra.....W/60-52

**America East / North Atlantic
Conference (7-9)**

1992 Qtrs. Boston University...W/77-75
Semis at Vermont.....L/66-82

1993 Qtrs. Hartford.....W/73-64
Semis at Vermont.....L/62-75

1994 Qtrs. Boston University.....L/60-62

1995 Qtrs. at Northeastern.....L/59-65

1996 Qtrs. at Hartford.....L/55-72

1997 Qtrs. Boston University...W/76-65
Semis at Vermont.....L/40-72

1998 Qtrs. vs. Drexel.....L/66-68
(All Rounds at Orono, Maine)

1999 Qtrs. at Vermont.....L/64-74
(All Rounds at Burlington, Vt.)

2000 Qtrs. vs. New HampshireW/77-65
Semis vs. Maine.....L/66-74
(All Rounds at Burlington, Vt.)

2001 Qtrs. vs. Boston University...W/67-49
Semis vs. Hartford.....W/50-47
Final at Vermont....W/69-66 (OT)
(All Rounds at Burlington, Vt.)

Colonial Athletic Association (10-9)

2002 Qtrs. vs. DrexelW/72-63 (OT)
Semis vs. UNC Wilmington....L/60-65
(All Rounds at Norfolk, Va.)

2003 Qtrs. vs. DrexelW/69-51
Semis vs. VCUW/63-42
Final at Old Dominion.....L/58-66
(All Rounds at Norfolk, Va.)

2004 Qtrs. vs. UNC Wilmington....W/65-59
Semis at Old Dominion.....L/62-73
(All Rounds at Norfolk, Va.)

2005 Qtrs. vs. VCUW/71-56
Semis vs. James MadisonW/62-57
Final vs. Old Dominion....L/74-78 (OT)
(All Rounds at Fairfax, Va.)

2006 Qtrs. vs. Northeastern...W/55-45
Semis vs. James Madison ..L/59-61
(All Rounds at Fairfax, Va.)

2007 Qtrs. VCUW/79-58
Semis James MadisonL/56-67
(All Rounds at Newark, Del.)

2008 1st Rd. UNC Wilmington.....L/56-59
(All Rounds at Newark, Del.)

2009 1st Rd. vs. TowsonL/37-40
(All Rounds at Harrisonburg, Va.)

2010 1st Rd. vs. George Mason...W 58-41
Qtrs. vs. DrexelW 67-61 OT
Semis vs. Old DominionL 49-50
(All Rounds at Harrisonburg, Va.)



UD WOMEN'S BASKETBALL

MEET THE TEAM



2010-11 Delaware Women's Basketball Roster

No.	Name	Yr.	Pos.	Ht.	Hometown/High School (Previous School)
2	Jocelyn Bailey **	Jr.	G	6-0	Kensington, Md./The Bullis School
3	Jaquetta May *	So.	G	5-9	Wilmington, Del./Delcastle
4	Meghan McLean **	Jr.	G	5-9	Pittsburgh, Pa./Upper St. Clair
5	Vanessa Kabongo **	Jr.	G	5-10	Toronto, Canada/Eastern Commerce
10	Kayla Miller *	Jr.	G	5-8	Wilmington, Del./Ursuline Academy (GWU)
11	Elena Delle Donne *	So.	F/G	6-5	Wilmington, Del./Ursuline Academy
12	Danielle Parker *	So.	F	6-2	Phoenix, Md./Dulaney
13	Kelsey Buchanan	Fr.	C	6-3	South Riding, Va./Freedom
15#	Akeema Richards	So.r	G	5-7	Baltimore, Md./Western (West Virginia)
20	Eva Riddick ***	Sr.	F	6-3	Rochester, N.Y./Rush-Henrietta
21#	Trumae Lucas	Jr.r	G	5-8	Greensboro, N.C./Grimsley (Florida)
22	Lauren Carra *	So.	G	5-9	Dunmore, Pa./Dunmore
45	Chelsea Craig	So.	F	6-2	Rockville, Md./Wootton
51	Sarah Acker	Jr.	C	6-3	Nanticoke, Pa./Greater Nanticoke (St. Joe's)
55	Jasmine Gibson **	Jr.	C	6-3	New Castle, Del./Sanford

* - Letters Won

- Ineligible for 2010-11 season due to NCAA Transfer Rules

Coaching Staff

Head Coach: Tina Martin
Lock Haven University, 1986
15th season at Delaware

Associate Head Coach: Jeanine Radice
Fordham University, 1989
15th Season at Delaware

Assistant Coach: Tiara Malcom
University of Delaware, 2005
Fifth Season at Delaware

Assistant Coach: Mark McCaleb
University of Massachusetts, 1989
First Season at Delaware

Pronunciation Guide

- #5 Vanessa Kabongo: kuh-BON-go
- #11 Elena Delle Donne: Dell-AH Dawn
- #20 Eva Riddick: EE-vuh
- #21 Trumae Lucas: True-MAY
- #22 Lauren Carra: cah-RAH
- #15 Akeema Richards: ah-KEEM-ah
- Jeanine Radice: ruh-DEESE

UD HEAD COACH TINA MARTIN

15th Season at Delaware • Lock Haven (Pa.), 1986



the PSAC's all-time leading scorer with 2,157 career points.

15th season at University of Delaware...prior to the 2010-11 season had compiled a 258-161(.616) record at the helm of the Hens' basketball program, becoming the fastest UD basketball coach (men's or women's) to reach 100 career wins...has led the Blue Hens to 20-win seasons in eight of the last 10 years and seven post-season appearances, including NCAA bids in 2001 and 2007...Martin began her coaching career at Lock Haven in 1986-87, serving as a graduate assistant, and the next season moved on to Seton Hall...spent nine seasons at Seton Hall as an assistant coach in a program that made back-to-back NCAA tournament appearances in 1994 and 1995, advancing to the Sweet 16 in 1994...a native of Williamsport, Pa., she was a two-time Division II All-American at Lock Haven University, a four-time Pennsylvania State Athletic Conference all-star, and two-time league Player of the Year who finished her career as

Hens Under Martin

Home	133-49
Away	101-93
Neutral	25-19
vs. CAA	109-53
vs. CAA at Home	62-21
vs. CAA on Road	47-32
In Overtime	11-8
November	34-27
December	59-23
January	73-48
February	67-41
March	26-22
Sunday	75-42
Monday	15-3
Tuesday	12-14
Wednesday	22-9
Thursday	66-36
Friday	37-25
Saturday	32-32

Martin's Teams Vs.

Opponent	Home	Away	Neut.	Overall
UMBC	0-0	2-0	0-0	1-0
Villanova	1-0	1-0	0-0	2-0
Yale	0-0	0-0	0-0	0-0
Saint Francis (Pa.)	1-0	2-0	0-0	3-0
La Salle	4-2	3-2	0-0	7-4
Princeton	3-0	3-1	0-0	6-1
Navy	3-0	0-1	0-0	3-1
Penn State	0-0	0-0	0-0	0-0
Saint Joseph's	0-0	0-2	0-0	0-2
Vanderbilt	0-0	0-0	0-0	0-0
TBA	0-0	0-0	0-0	0-0
Hofstra	13-1	7-7	0-0	20-8
Northeastern	9-1	7-3	1-0	17-4
Drexel	8-6	8-7	3-0	19-13
William & Mary	6-1	4-3	0-0	10-4
Old Dominion	2-5	1-8	0-2	3-15
UNC Wilmington	7-2	4-3	1-1	12-6
Georgia State	3-1	2-1	0-0	5-2
George Mason	8-1	7-3	1-0	16-4
Towson	10-4	8-6	0-1	18-11
James Madison	6-3	3-6	1-1	10-10
VCU	6-2	4-5	1-0	11-7

Tina Martin Milestone Wins

Date	Opponent	Milestone
Nov. 22, 1996	Delaware State	1st Career Victory
Feb. 26, 2000	Vermont	50th Career Victory
March 10, 2001	Vermont	Won America East Championship
March 1, 2002	Hofstra	100th Career Victory
Jan. 2, 2005	VCU	150th Career Victory
Jan. 9, 2005	Old Dominion	Ended ODU's 122-Game CAA Home Win Streak
Dec. 29, 2005	Saint Joseph's	Won SJU Classic Championship
Nov. 24, 2006	Kentucky	Defeated #20 Wildcats
Jan. 4, 2007	Hofstra	200th Career Victory
Feb. 22, 2007	James Madison	Defeated #22 Dukes in front of over 3,000 fans
Jan. 10, 2010	Northeastern	Earned 100th CAA Regular Season Victory
Jan. 28, 2010	Towson	250th Career Victory



Delaware Season By Season

MARY ANN HITCHENS (70-42, .625, 7 seasons)

Season	Record	Outcome
1971-72	8-4	3rd Place, EAIWA Regionals
1972-73	9-5	3rd Place, EAIWA Regionals
1973-74	8-7	3rd Place, Mid-Atlantic Regionals
1974-75	12-5	3rd Place, EAIWA Regionals
1975-76	12-6	3rd Place, EAIWA Regionals
1976-77	9-9	3rd Place, EAIWA Regionals
1977-78	12-6	2nd Place, EAIWA Regionals

JOYCE PERRY (266-212, .556, 18 seasons)

Season	Record	Outcome
1978-79	6-11	
1979-80	7-13	
1980-81	21-7	
1981-82	9-14	
1982-83	12-12	1st Place, ECC West
1983-84	22-4	1st Place, ECC
1984-85	19-9	2nd Place, ECC
1985-86	15-15	3rd Place, ECC
1986-87	10-17	6th Place, ECC
1987-88	18-11	3rd Place, ECC
1988-89	23-6	1st Place, ECC
1989-90	21-9	1st Place, ECC
1990-91	18-11	1st Place, ECC
1991-92	15-14	4th Place, NAC
1992-93	17-11	4th Place, NAC
1993-94	10-17	5th Place, NAC
1994-95	12-15	7th Place, NAC
1995-96	11-16	5th Place, NAC

TINA MARTIN (258-161, .616, 14 Seasons)

Season	Record	Outcome
1996-97	9-19	7th, America East
1997-98	6-21	10th, America East
1998-99	16-11	5th, America East
1999-2000	21-8	3rd, America East
2000-01	26-5	1st, America East
2001-02	23-7	2nd, CAA
2002-03	22-9	T-1st, CAA
2003-04	19-10	4th, CAA
2004-05	25-6	1st, CAA
2005-06	22-8	3rd, CAA
2006-07	26-6	T-2nd, CAA
2007-08	7-24	9th, CAA
2008-09	15-15	9th, CAA
2009-10	21-12	5th, CAA

UD WOMEN'S BASKETBALL COACHING STAFF



Associate Head Coach Jeanine Radice

Fordham University, 1989
15th Season at Delaware

Jeanine Radice, a former standout player at Fordham and an assistant coach at Seton Hall for four seasons, begins her 15th season as Tina Martin's top assistant on the University of Delaware women's basketball staff in 2010-11. Her tenure is longer than any other current assistant coach among UD women's athletics teams.

Radice, who was promoted to associate head coach in April, 2000, has played a key role in Delaware's rise to the top of the America East conference and now to the upper echelon of the Colonial Athletic Association. During her 13 seasons as Martin's top assistant, she has led the Blue Hens to 237 wins, a .613 winning percentage, two NCAA Tournament berths, four Women's National Invitation Tournament appearances, and three conference titles. The Blue Hens have advanced to their league tournament semifinals nine times in 14 years.



Assistant Coach Tiara Malcom

University of Delaware, 2005
Fifth Season at Delaware

Tiara Malcom, a record-setting forward and one of the top women's basketball players in University of Delaware basketball history, begins her fifth season with the Blue Hen coaching staff in 2010-11.

Malcom was a four-year standout for the Blue Hens under Martin, leading the squad to a four year mark

of 89-32, Colonial Athletic Association regular season titles in 2003 and 2005, and berths in the Women's National Invitation Tournament three times. The Hens, who went 55-15 in conference action during Malcom's career, and appeared in the CAA Tournament championship game in both 2003 and 2005.

Malcom, who served as captain of the 2004-05 squad, was a three-time All-CAA selection, earning second team honors in 2003 and 2004 before garnering first team recognition in 2005 when she was named CAA Player of the Year. That season she led the CAA in scoring and ranked atop league leaders in rebounding.



Assistant Coach Mark McCaleb

University of Massachusetts, 1989
First Season at Delaware

Mark McCaleb, who served as head coach at Division II University of Bridgeport, was hired as women's basketball assistant coach at the University of Delaware in September, 2010.

McCaleb joins the Delaware staff after serving the last six seasons as head coach at Bridgeport. During his time at Bridgeport, he led the team to

one of the largest turnarounds in Division II basketball, taking the team from a 3-24 overall record in 2003-04, improving 17 games and coaching the squad to a 22-9 record in his first season at Bridgeport in 2005-06. In his six seasons, he posted a record of 103-71, including a 20-10 mark last season.

During the 2003-04 season, McCaleb was the head coach at NCAA Division III Saint Joseph's College of Maine and led the perennial Top 20 program to a record of 13-12. From 2001-03, McCaleb served as the academic coordinator and recruiter at CAA-rival Northeastern University.



Director of Basketball Operations • Allie Fedorowicz

Cornell University, 2010
First Season at Delaware

Allie Fedorowicz was hired as the Director of Basketball Operations at the University of Delaware in September of 2010, following an outstanding career at Cornell University where she was a co-captain this past season.

A native of Abington, Pa., Fedorowicz was twice named to an All-Tournament team

in 2009-10, earning honors at DePaul Classic and again at the Virginia Holiday Tournament. She was a starter on the 2007-08 team which captured the Ivy League championship and earned a berth in the NCAA Tournament.

As a senior, she led the team in points (12.2 per game) and steals (29) while averaging 31.0 minutes a game. She left her mark in the Big Red record book, ranking second in career three-point field goals (148) and third in career free throw percentage (.816).

#2 JOCELYN BAILEY

Junior • Guard • 6-0 • Kensington, Md. • The Bullis School

As A Blue Hen

Expected to battle for a starting position in Blue Hen backcourt.

2009-10 Season

One of three players to appear in each of the Blue Hens' 33 games • started 22 contests • averaged 5.0 points and 4.4 rebounds on the year • added 37 steals to rank second on the team • contributed 24 assists • swatted away nine blocks in 723 minutes on the hardwood • scored a season-high 15 points in the season opener at St. Francis (Pa.) (11/17) when she went 9-for-10 from the free throw line • notched double-digit performances at UMBC (12/5) and against Towson (1/28) when she went 5-for-7 from the floor (.714) • brought down a season-high 11 boards against Navy (12/11) and scrapped up eight against Buffalo (12/22) and UMBC • tallied three steals on seven different occasions • was a perfect 5-for-5 from the foul line against the Retrievers • played a season-high 33 minutes in win at Hofstra (1/24).

2008-09 Season

Appeared in all but one game during her freshman campaign • made only start of the season at VCU (1/18) • averaged 6.0 points and 3.8 rebounds on the year • contributed 28 steals and 15 assists • scored a season-high 14 points against Maryland Eastern Shore (12/4), which included a 10-12 shooting night from the free throw line • scored 10 points six times on the year • reached double figures in three straight games against Stony Brook (12/28), Loyola Marymount (12/29) and Drexel (12/30) • scored 10 points in back-to-back games versus William & Mary (2/11) and Old Dominion (2/15) • grabbed a season-high eight rebounds against Columbia (11/16) in her Blue Hen debut • dished out a season-best four assists at Massachusetts (12/10) • posted four steals at Old Dominion.

High School

Standout basketball player at The Bullis School in Potomac, Md. under head coach James Nickles • led team to an undefeated ISL Championship season in 2005-06 • earned All-ISL honors in 2006-07 and 2007-08 • All-County as a senior • McDonald's All-American nominee in 2008 • honor student.

Personal

Jocelyn Jasmine Bailey • born in Washington, D.C. • daughter of David E. Bailey, Jr. and Ms. Jackie Davis • father is a police officer and mother is a paraeducator • has brothers David E. Bailey III, Davon Bailey and Daniel Bailey • fashion merchandising major at Delaware • aspires to be a leader in the fashion industry • cites parents as the biggest influence on basketball career • hobbies include drawing and shopping.

Date	Opponent	FG-A	3FG-A	FT-A	O-D-R	PF	A	T	B	S	Pts.	Min.
11/12	UMBC	1-5	0-0	1-2	3-4-7	4	0	2	1	0	3	25
11/16	Villanova											
11/20	at Yale											
11/23	St. Francis (Pa.)											
11/28	at La Salle											
12/1	Princeton											
12/5	at Navy											
12/19	at Penn State											
12/22	Saint Joseph's											
12/29	vs. Vanderbilt											
12/30	vs. TBA											
1/2	Hofstra											
1/6	at Northeastern											
1/9	at Drexel											
1/13	William & Mary											
1/16	Old Dominion											
1/20	at UNCW											
1/23	at Georgia State											
1/27	George Mason											
1/30	at Hofstra											
2/3	Northeastern											
2/6	Drexel											
2/10	at Towson											
2/13	at William & Mary											
2/17	at George Mason											
2/20	James Madison											
2/24	VCU											
2/27	at Old Dominion											
3/2	Towson											

Year	G/GS	FG-FGA	PCT	3-PT-FGA	PCT	FT-FTA	PCT	AST	STL	BLK	REB	RPG	PTS	PPG	Min.	Avg.
2008-09	29/1	59-181	.326	0-1	.000	56-95	.589	15	28	7	111	3.8	174	6.0	543	18.7
2009-10	33/22	61-170	.359	0-1	.000	43-72	.597	24	37	9	144	4.4	165	5.0	723	21.9
2010-11	1/1	1-5	.166	0-0	.000	1-2	.500	0	0	1	7	7.0	3	3.0	25	25.0
Totals	63/24	121-356	.339	0-2	.000	100-169	.591	39	65	17	262	4.1	342	5.4	1,291	20.4



Career Highs

Points: 15 at Saint Francis (Pa.), 11/17/09
FG Made: 5, twice
FG Attempted: 16 vs. William & Mary, 2/11/09
3-Pointers Made: n/a
3-Pointers Attempted: 1, twice
FT Made: 10 at Maryland Eastern Shore, 12/4/08
FT Attempted: 12 at Maryland Eastern Shore, 12/4/08
Rebounds: 11 vs. Navy, 12/11/09
Assists: 4 at Massachusetts, 12/10/08
Blocks: 2 at Quinnipiac, 11/25/08
Steals: 4 at Old Dominion, 2/15/09
Minutes: 33 at Hofstra, 1/24/10

Season Highs

Points: 3 vs. UMBC, 11/12/10
FG Made: 1, vs. UMBC, 11/12/10
FG Attempted: 5 vs. UMBC, 11/12/10
3-Pointers Made: n/a
3-Pointers Attempted: n/a
FT Made: 1 vs. UMBC, 11/12/10
FT Attempted: 2 vs. UMBC, 11/12/10
Rebounds: 7 vs. UMBC, 11/12/10
Assists: n/a
Blocks: 1 vs. UMBC, 11/12/10
Steals: n/a
Minutes: 25 vs. UMBC, 11/12/10

#3 JAQUETTA MAY

Sophomore • Guard • 5-9 • Wilmington, Del. • Delcastle

As A Blue Hen

Will challenge for playing time in the Delaware backcourt as a sophomore.

2009-10 Season

Saw action in 22 of the Blue Hens' contests including the each of the final 17 games of the season • started the Hens' season finale game when UD hosted Richmond (3/18) in the first round of the WNIT • contributed 82 points and 62 boards to average 3.7 points and 2.8 rebounds per game • made 21 steals on the season, dished out 19 assists and made good on eight blocks • scored a season-high 12 points in a stand-out game at VCU (1/21) • notched her second double-digit game against the Spiders with 10, and tallied nine against George Mason (2/8) • pulled down nine rebounds at VCU and grabbed eight against GMU • dished out four assists against Mason and dealt three against Drexel (3/12) and Northeastern (2/25) • made three steals against George Mason (3/11) in the first round of the Colonial Athletic Association Tournament hosted by James Madison • saw a season-high 32 minutes of action at VCU • shared the UD Most Improved Player Award with Danielle Parker.

High School

First team All-State selection in 2009 after earning second team honors in 2008 and third team honors in 2007 • led Delcastle Technical High School to the 2009 state championship • averaged 17.5 points, 4.2 assists, 3.0 steals and 2.1 blocks per game as a senior • won National AAU Division II Championships in 2006-07 and 2007-08 • four-year letterwinner who earned two captains pins • distinguished honor roll student.

Personal

Jaquetta Tamineke May • daughter of Jeffrey and Virginia May • has a sister, Candice, and a brother, Jeffrey • sport management major at Delaware • is a Certified Nursing Assistant who worked as Churchmans Village Nursing Home during the summer • enjoys playing the drums, playing the piano, and singing during her free time.



Career Highs

Points: 12 at VCU, 1/21/10
FG Made: 5 at VCU, 1/21/10
FG Attempted: 10 vs. George Mason, 2/7/10
3-Pointers Made: n/a
3-Pointers Attempted: n/a
FT Made: 3 vs. UMBC, 11/12/10
3 vs. George Mason, 2/7/10
FT Attempted: 4, four times
Rebounds: 9 at VCU, 1/21/10
Assists: 4 vs. George Mason, 2/7/10
Blocks: 2, twice
Steals: 3 vs. UMBC, 11/12/10
Minutes: 32 at VCU, 1/21/10

Season Highs

Points: 3 vs. UMBC, 11/12/10
FG Made: n/a
FG Attempted: 2 vs. UMBC, 11/12/10
3-Pointers Made: n/a
3-Pointers Attempted: n/a
FT Made: 3 vs. UMBC, 11/12/10
FT Attempted: 4 vs. UMBC, 11/12/10
Rebounds: 7 vs. UMBC, 11/12/10
Assists: 2 vs. UMBC, 11/12/10
Blocks: 1 vs. UMBC, 11/12/10
Steals: 3 vs. UMBC, 11/12/10
Minutes: 18 vs. UMBC, 11/12/10

Date	Opponent	FG-A	3FG-A	FT-A	O-D-R	PF	A	T	B	S	Pts.	Min.
11/12	UMBC	0-2	0-0	3-4	2-5-7	3	2	3	1	3	3	18
11/16	Villanova											
11/20	at Yale											
11/23	St. Francis (Pa.)											
11/28	at La Salle											
12/1	Princeton											
12/5	at Navy											
12/19	at Penn State											
12/22	Saint Joseph's											
12/29	vs. Vanderbilt											
12/30	vs. TBA											
1/2	Hofstra											
1/6	at Northeastern											
1/9	at Drexel											
1/13	William & Mary											
1/16	Old Dominion											
1/20	at UNCW											
1/23	at Georgia State											
1/27	George Mason											
1/30	at Hofstra											
2/3	Northeastern											
2/6	Drexel											
2/10	at Towson											
2/13	at William & Mary											
2/17	at George Mason											
2/20	James Madison											
2/24	VCU											
2/27	at Old Dominion											
3/2	Towson											

Year	G/GS	FG-FGA	PCT	3-PT-FGA	PCT	FT-FTA	PCT	AST	STL	BLK	REB	RPG	PTS	PPG	Min.	Avg.
2009-10	22/1	31-60	.516	0-0	.000	20-34	.588	19	21	8	62	2.8	82	3.7	298	13.5
2010-11	1/0	0-2	.000	0-0	.000	3-4	.750	2	3	1	7	7.0	3	3.0	18	18.0
Totals	23/1	31-62	.500	0-0	.000	23-38	.605	21	24	9	69	3.0	85	3.6	316	13.7

#4 MEGHAN McLEAN

Junior • Guard • 5-9 • Pittsburgh, Pa. • Upper St. Clair



As A Blue Hen

Expected to get increased playing time in the Blue Hen backcourt as a point guard as a junior...should see additional action due to back injury to starter Kayla Miller.

2009-10 Season

Saw action in eight games • contributed seven points and three boards averaging 0.9 points and 0.4 rebounds per game • went 2-for-3 from beyond the arc • tallied three points in games against Houston (11/27) in the first round of the Coors Rocky Mountain Invitational at Colorado State and in the Hens' season opener at St. Francis (Pa.) (11/17) • dished out a pair of assists • played a season-high 14 minutes against the Red Flash • named to the Colonial Athletic Association All-Academic 2nd Team • awarded the UD Team Sportsmanship Award.

2008-09 Season

Appeared in all 30 games as a freshman and made starts in consecutive games against James Madison (1/14) and VCU (1/18) • ranked second on the team with 10 three-pointers made and was fourth with 28 assists • scored a season-high six points, shooting 2-for-2 from three-point range each time, against Dartmouth (11/28), Massachusetts (12/10), and Hofstra (2/5) • dished out a season-high five assists against James Madison (1/14) and added three in four other games • recorded a season-high four steals against Maine (12/7).

High School

Three-year letterwinner and two-year captain at Upper St. Clair High School under head coach Ernie Koontz • earned First Team All-Section honors for two years • Elite Eleven selection for two years.

Personal

Meghan Lea McLean • born in Pittsburgh, Pa. • daughter of David and Judy McLean • father is an architect • has four siblings: Jenny, Allison, David and Susan • aunt Peggy Liberatore played basketball at Toledo • cites AAU coach Jay Monahan as biggest influence on basketball career and parents as biggest fans • sport management major at Delaware with a minor in business • aspires to work in sports marketing for a professional team.

Career Highs
Points: 6, three times
FG Made: 2, three times
FG Attempted: 4 vs. Hofstra, 1/8/09
3-Pointers Made: 2, three times
3-Pointers Attempted: 3, twice
FT Made: 2 vs. UMBC, 11/12/10
FT Attempted: 2 vs. UMBC, 11/12/10
Rebounds: 2, eight times
Assists: 5 vs. James Madison, 1/14/09
Blocks: 1 at Towson, 2/22/09
Steals: 4 vs. Maine, 12/7/08
Minutes: 27 at VCU, 1/18/09

Season Highs
Points: 2 vs. UMBC, 11/12/10
FG Made: n/a
FG Attempted: 2 vs. UMBC, 11/12/10
3-Pointers Made: n/a
3-Pointers Attempted: 2 vs. UMBC, 11/12/10
FT Made: 2 vs. UMBC, 11/12/10
FT Attempted: 2 vs. UMBC, 11/12/10
Rebounds: 2 vs. UMBC, 11/12/10
Assists: n/a
Blocks: n/a
Steals: n/a
Minutes: 8 vs. UMBC, 11/12/10

Date	Opponent	FG-A	3FG-A	FT-A	O-D-R	PF	A	T	B	S	Pts.	Min.
11/12	UMBC	0-2	0-2	2-2	0-2-2	2	0	1	0	0	2	8
11/16	Villanova											
11/20	at Yale											
11/23	St. Francis (Pa.)											
11/28	at La Salle											
12/1	Princeton											
12/5	at Navy											
12/19	at Penn State											
12/22	Saint Joseph's											
12/29	vs. Vanderbilt											
12/30	vs. TBA											
1/2	Hofstra											
1/6	at Northeastern											
1/9	at Drexel											
1/13	William & Mary											
1/16	Old Dominion											
1/20	at UNCW											
1/23	at Georgia State											
1/27	George Mason											
1/30	at Hofstra											
2/3	Northeastern											
2/6	Drexel											
2/10	at Towson											
2/13	at William & Mary											
2/17	at George Mason											
2/20	James Madison											
2/24	VCU											
2/27	at Old Dominion											
3/2	Towson											

Year	G/GS	FG-FGA	PCT	3-PT-FGA	PCT	FT-FTA	PCT	AST	STL	BLK	REB	RPG	PTS	PPG	Min.	Avg.
2008-09	30/2	13-38	.342	10-28	.357	1-2	.500	28	20	1	19	0.6	37	1.2	310	10.3
2009-10	8/0	2-3	.667	2-3	.667	1-2	.500	2	0	0	3	0.4	7	0.9	27	3.4
2010-11	1/0	0-2	.000	0-2	.000	2-2	1.000	0	0	0	2	2.0	2	2.0	8	8.0
Totals	39/2	15-43	.348	12-33	.363	4-6	.666	30	20	1	24	0.6	46	1.1	343	8.7

#5 VANESSA KABONGO

Junior • Guard • 5-10 • Toronto, Ontario • Eastern Commerce



As A Blue Hen

Will be returning to the hardwood after a season-ending injury last December...expected to challenge for a starting spot in the Blue Hen backcourt and could see increased role at point guard with loss of Kayla Miller to pre-season back surgery.

2009-10 Season

Saw action in the Hens' first seven games, starting four, before suffering a season-ending injury • tallied 18 points and added 18 rebounds in just 134 minutes of action • averaged 2.6 points and 2.6 boards per game • dished out four assists, made six steals and swatted away one block during non-conference action • scored a season-high seven points in the Hens' season opener at St. Francis (11/17) • pulled down four rebounds in contests against Colorado State (11/28) and the Red Flash • made three steals against Houston (11/27) in the first round of the Coors Rocky Mountain Invitational at Colorado State • played a season-high 29 minutes against the Rams.

Summer 2009

Competed for Team Canada at the World University Games in Belgrade, Serbia from July 1-10 • averaged 6.9 points and 3.3 rebounds for Team Canada, which finished the tournament with a 2-5 record.

2008-09 Season

Was the only player on the team to start all 30 games on the season • ranked second on the team with 10.8 points per game, 65 steals and 37 assists • ranked sixth in the Colonial Athletic Association with 2.2 steals per game and 15th with 10.8 points per game • posted career-highs of 25 points and eight rebounds against George Mason (1/25) • scored 17 points against Maryland Eastern Shore (12/6) and Stony Brook (12/28) • reached double figures 16 times, including seven straight from Jan. 18 through Feb. 8 • posted a career-high six steals three times • named to Courtyard by Marriott LA Westside Holiday Classic at Loyola Marymount All-Tournament Team.

2007-08 Season

Appeared in all 31 games while starting 25 for the Blue Hens • tied for second on the team with 6.6 points per game and added 2.7 rebounds per contest • ranked third on the team with 24 assists • scored a season-high 17 points while tying season-bests with three assists and two steals at Towson (3/6) • recorded 14 points in the win over Northeastern (1/20) • scored 12 points in the home game against Towson (2/21) • named to Panera Bread Challenge at UTC All-Tournament Team after scoring 11 points against Louisville (11/23) and adding 10 points and three assists versus Murray State (11/24) • reached double figures in 10 games on the season.

High School

Led Eastern Commerce High School to an undefeated season and 2004 city championship, and the 2006 city championship • was one of 12 players selected to attend Canada Basketball's National Elite Development Academy • played in five games at the 2005 USAB Youth Festival • won a gold medal with Team Ontario at the 2005 Canada Games and a silver medal at the 2005 U15 National Championships • also played in five games at the U20 FIBA Americas Qualifier in Mexico City and trained with the Junior Women's National Team in Colorado Springs • voted to the first All-Star team at the 2006 National Championships and named 2006 All-Canadian Rising Star.

Personal

Vanessa Ntumba Kabongo • daughter of Touré Mukendi and Néné Kabongo • born in Democratic Republic of the Congo • has brothers Emmanuel, Henry, Billy, Myck, and Jonathan • Emmanuel played two years at George Brown College in Toronto • accounting major at Delaware • worked as a basketball camp instructor over the summer • enjoys reading, relaxing with family and friends, shopping, and watching movies in her spare time.

#5 VANESSA KABONGO

Junior • Guard • 5-10 • Toronto, Ontario • Eastern Commerce

Date	Opponent	FG-A	3FG-A	FT-A	O-D-R	PF	A	T	B	S	Pts.	Min.
11/12	UMBC	0-3	0-0	1-2	2-2-4	1	0	4	0	1	1	22
11/16	Villanova											
11/20	at Yale											
11/23	St. Francis (Pa.)											
11/28	at La Salle											
12/1	Princeton											
12/5	at Navy											
12/19	at Penn State											
12/22	Saint Joseph's											
12/29	vs. Vanderbilt											
12/30	vs. TBA											
1/2	Hofstra											
1/6	at Northeastern											
1/9	at Drexel											
1/13	William & Mary											
1/16	Old Dominion											
1/20	at UNCW											
1/23	at Georgia State											
1/27	George Mason											
1/30	at Hofstra											
2/3	Northeastern											
2/6	Drexel											
2/10	at Towson											
2/13	at William & Mary											
2/17	at George Mason											
2/20	James Madison											
2/24	VCU											
2/27	at Old Dominion											
3/2	Towson											

Career Highs

Points: 25 vs. George Mason, 1/25/09
FG Made: 8, five times
FG Attempted: 23 vs. UNC Wilmington, 1/22/09
3-Pointers Made: 1, four times
3-Pointers Attempted: 2 vs. La Salle, 11/28/07
FT Made: 9 vs. George Mason, 1/25/09
FT Attempted: 11 vs. George Mason, 1/25/09
Rebounds: 8 vs. George Mason, 1/25/09
Assists: 3, four times
Blocks: 1, seven times
Steals: 6, three times
Minutes: 40 vs. Hofstra, 1/8/09

Season Highs

Points: 1 vs. UMBC, 11/12/10
FG Made: n/a
FG Attempted: 3 vs. UMBC, 11/12/10
3-Pointers Made: n/a
3-Pointers Attempted: n/a
FT Made: 1 vs. UMBC, 11/12/10
FT Attempted: 2 vs. UMBC, 11/12/10
Rebounds: 4 vs. UMBC, 11/12/10
Assists: n/a
Blocks: n/a
Steals: 1 vs. UMBC, 11/12/10
Minutes: 22 vs. UMBC, 11/12/10

Year	G/GS	FG-FGA	PCT	3-PT-FGA	PCT	FT-FTA	PCT	AST	STL	BLK	REB	RPG	PTS	PPG	Min.	Avg.
2007-08	31/25	85-253	.336	3-8	.375	32-54	.593	24	19	2	83	2.7	205	6.6	749	24.2
2008-09	30/30	131-384	.341	1-4	.250	60-89	.674	37	65	4	141	4.7	323	10.8	921	30.7
2009-10	7/4	8-30	.267	0-2	.000	2-4	.500	4	6	1	18	2.6	18	2.6	134	19.1
2010-11	1/1	0-3	.000	0-0	.000	1-2	.500	0	1	0	4	4.0	1	1.0	22	22.0
Totals	69/60	224-670	.334	4-14	.286	95-149	.637	65	91	7	246	3.5	547	7.9	1,826	26.4

#10 KAYLA MILLER

Junior • Guard • 5-8 • Wilmington, Del. • Ursuline Acad. • (GWU)

As A Blue Hen

Will serve as a co-captain in 2010-11... slated to return as team's starting point guard but will be out indefinitely after undergoing back surgery in November.

2009-10 Season

Served as a co-captain with Eva Riddick • saw action in 24 games • made 20 starts after sitting out the first nine games of the season due to NCAA transfer regulations • contributed 85 points and 43 rebounds for the Blue Hens • averaged 3.5 points and 1.8 boards per game • dished out a team-high 74 assists, made 27 steals and managed one block on the season • tallied a season-high 10 points against George Mason (2/8) • added nine against Drexel (1/17) and Buffalo (12/22) • drained a pair of three-pointers against George Mason (3/11) and Massachusetts (12/30) • pulled down a season-high six rebounds against Old Dominion (3/13) in the semifinals of the Colonial Athletic Association Tournament • dealt a team season-high seven assists against Towson (1/28) and six against UNC Wilmington (1/14) • made a trio of steals on four different occasions • played a season-high 40 minutes in games against ODU, and twice against Drexel (3/12 and 1/17) • named to the CAA All-Academic 2nd-Team • selected as Delaware's nominee for the CAA Dean Ehlers Leadership Award • presented the Joyce Perry Memorial Coaches' Award at the annual women's basketball banquet.

2008-09 Season

Transferred to Delaware from George Washington following the fall 2008 semester • appeared in seven games for the Colonials, averaging 1.3 points and 0.9 rebounds in six minutes per contest • scored nine points on 3 of 4 shooting from the field and 2 of 2 shooting from the free throw line while adding two assists in 17 minutes against Coppin State.

High School

Three-time All-State selection who led Ursuline Academy to the 2005, 2006 and 2008 state championships • averaged 14.0 points, 6.0 assists, 3.0 rebounds and 2.0 steals per game to earn first team All-State honors as a senior in 2008 • 2006 honorable mention All-State and 2007 third team All-State selection • four-time all-conference selection who earned first team honors as a junior and senior • member of Spirit Club.

Personal

Kayla Noel Miller • daughter of Jeff and Karen Miller • has a sister Kelsey, the current Miss Delaware Teen USA, and a brother, Dylan • father played football at Susquehanna University • exercise physiology major at Delaware with a minor in disabilities studies • worked as a basketball camp counselor, helper at First State Surgery Center, and a flagger for Grassbusters over the summer • enjoys dancing, exercising, writing, listening to music, and hanging out with friends during her free time.

Date	Opponent	FG-A	3FG-A	FT-A	O-D-R	PF	A	T	B	S	Pts.	Min.
11/12	UMBC	-	-	-	-	-	-	-	-	-	-	-
11/16	Villanova											
11/20	at Yale											
11/23	St. Francis (Pa.)											
11/28	at La Salle											
12/1	Princeton											
12/5	at Navy											
12/19	at Penn State											
12/22	Saint Joseph's											
12/29	vs. Vanderbilt											
12/30	vs. TBA											
1/2	Hofstra											
1/6	at Northeastern											
1/9	at Drexel											
1/13	William & Mary											
1/16	Old Dominion											
1/20	at UNCW											
1/23	at Georgia State											
1/27	George Mason											
1/30	at Hofstra											
2/3	Northeastern											
2/6	Drexel											
2/10	at Towson											
2/13	at William & Mary											
2/17	at George Mason											
2/20	James Madison											
2/24	VCU											
2/27	at Old Dominion											
3/2	Towson											

Year	G/GS	FG-FGA	PCT	3-PT-FGA	PCT	FT-FTA	PCT	AST	STL	BLK	REB	RPG	PTS	PPG	Min.	Avg.
2009-10	24/20	25-95	.263	11-44	.250	24-44	.545	74	27	1	43	1.8	85	3.5	730	30.4
Totals	24/20	25-95	.263	11-44	.250	24-44	.545	74	27	1	43	1.8	85	3.5	730	30.4



Career Highs

Points: 10 vs. George Mason, 2/7/10
FG Made: 3, twice
FG Attempted: 7 vs. Buffalo, 12/22/09
3-Pointers Made: 2 vs. UMass, 12/30/09
3-Pointers Attempted: 6 vs. UMass, 12/30/09
FT Made: 5 at Hofstra, 1/24/10
FT Attempted: 8, twice
Rebounds: 6 vs. Old Dominion, 3/13/10
Assists: 7 vs. Towson, 1/28/10
Blocks: 1 vs. Drexel, 1/17/10
Steals: 3, three times
Minutes: 40 vs. Drexel, 1/17/10

Season Highs

Points: n/a
FG Made: n/a
FG Attempted: n/a
3-Pointers Made: n/a
3-Pointers Attempted: n/a
FT Made: n/a
FT Attempted: n/a
Rebounds: n/a
Assists: n/a
Blocks: n/a
Steals: n/a
Minutes: n/a

#1 ELENA DELLE DONNE

All-American, Wooden Award, Naismith Award, Wade Trophy Candidate
Sophomore • Forward/Guard • 6-5 • Wilmington, Del. • Ursuline Academy



As A Blue Hen

Delaware's first All-American • expected to again lead the Blue Hen campaign assuming both forward and guard responsibilities • named CAA Co-Preseason Player of the Year • on Wade Trophy, Naismith Trophy and Wooden Award National Player of the Year Watch Lists while earning Preseason All-American votes.

2009-10 Season

Played a record-breaking All-American freshman season for the Blue Hens • became the first UD player to be named an All-American • selected to the Associated Press Third Team and a WBCA State Farm Honorable Mention • named ECAC Rookie of the year and selected to the ECAC First Team • became just the second player in Colonial Athletic Association history to receive CAA Player and Rookie of the Year accolades • additionally was named to the CAA First, All-Rookie, All-Defensive, and All-Tournament Teams • awarded the UD Alumni Association Team Most Valuable Player Award and the Blue Hen Basketball Club Outstanding Achievement Award at annual banquet • was honored on multiple occasions as CAA Player and Rookie of the Week • selected as the Army ROTC Best of the Blue Hens Athlete of the Week four times • played one of two games at the Coors Rocky Mountain Invitational and was named to the All-Tournament Team • saw action in 29 games while starting 28 • sat four games due to injury • scored 774 points to set a new single-season record while averaging 26.7 points per game, the third most in the nation • pulled down 254 rebounds good for an average of 8.8 per game • ranked second in the conference with 60 blocks • led the Blue Hens with 38 steals and dished out 56 assists, the second most on the team • went 194-for-216 from the charity stripe to lead the CAA and rank sixth in the nation with an 89.8 percent conversion rate • set a new UD record having hit 66 three-pointers throughout the season • made major headlines with a 54 point performance in Delaware's overtime loss at James Madison (2/18) • went 18-for-28 from the field and 7-for-8 from behind the arc to set new Delaware records • tallied seven 30-plus point games as a freshman, a Delaware career record • recorded eight consecutive 20-plus point performances while scoring in double figures each of her 29 games • drained 16-of-17 free throws against Hofstra (3/3) • set a new UD consecutive free throw record with 39 • kicked off the stretch at George Mason (1/7) before missing her first in six games at Hofstra (1/24) • shot a perfect game from the free throw line on 12 occasions • pulled down a season-high 16 boards at Northeastern (1/10) to help notch one of 12 double-doubles tallied throughout the year • served out five assists on three occasions • made a team season-high six steals against Old Dominion (1/3) and added five against Hofstra • that same game she swatted away a season-high seven blocked shots • also posted six blocks against Georgia State (2/14) and Drexel (1/17) • played a Delaware record 50 minutes of action in the Hens' double overtime loss to the Dragons • added 45 minutes in one of the Hens' three overtime games with Drexel (1/31)

2008-09 Season

Did not compete for the Blue Hen basketball team • selected to the CAA All-Rookie Team in volleyball • earned three CAA Rookie of the Week awards • led Delaware with 117 blocks and ranked second on the team with a .223 hitting percentage • volleyball team went 19-16, won its second consecutive CAA Championship, and made its second straight NCAA Tournament appearance under head coach Bonnie Kenny.

High School

Ranked as the nation's top senior • DIAA all-time leading scorer with 2,818 career points • was named co-Delaware State Player of the Year following junior season and was tabbed the Player of the Year as a senior • led Ursuline Academy to four Delaware state championships (2004, 2005, 2006, and 2008) • 2007-08 National Player of the Year by the Naismith, McDonald's, and Gatorade foundations • Parade First Team All-American • 2005, 2006 and 2008 Gatorade Delaware State Player of the Year • 2008 USA Today Player of the Year • 2006 Slam Magazine First Team All-America selection • 2006 Sports Illustrated Second Team All-America pick • USA Today Third Team All-America • 2004, 2005, 2006 All-Delaware First Team • 2005 and 2006 EA Sports All-America • 2005 Street & Smith All-America Third Team • 2004 Street & Smith All-America Honorable Mention • set national high school record by making 80 consecutive free throws in 2005-06 • scored 50 points in the 2006 state championship game • ranked as No. 1 senior by HoopGurlz.com • led Ursuline to 2007 state volleyball championship • member of National Honor Society.

Personal

Elena Delle Donne • daughter of Ernest and Joan Delle Donne • has an older sister, Elizabeth, and an older brother, Gene • brother played football for Middle Tennessee State • early childhood education major at Delaware with a focus in special education.

#11 ELENA DELLE DONNE

Sophomore • Forward/Guard • 6-5 • Wilmington, Del. • Ursuline Academy

Date	Opponent	FG-A	3FG-A	FT-A	O-D-R	PF	A	T	B	S	Pts.	Min.
11/12	UMBC	13-29	4-8	6-6	2-5-7	0	1	5	2	1	36	39
11/16	Villanova											
11/20	at Yale											
11/23	St. Francis (Pa.)											
11/28	at La Salle											
12/1	Princeton											
12/5	at Navy											
12/19	at Penn State											
12/22	Saint Joseph's											
12/29	vs. Vanderbilt											
12/30	vs. TBA											
1/2	Hofstra											
1/6	at Northeastern											
1/9	at Drexel											
1/13	William & Mary											
1/16	Old Dominion											
1/20	at UNCW											
1/23	at Georgia State											
1/27	George Mason											
1/30	at Hofstra											
2/3	Northeastern											
2/6	Drexel											
2/10	at Towson											
2/13	at William & Mary											
2/17	at George Mason											
2/20	James Madison											
2/24	VCU											
2/27	at Old Dominion											
3/2	Towson											

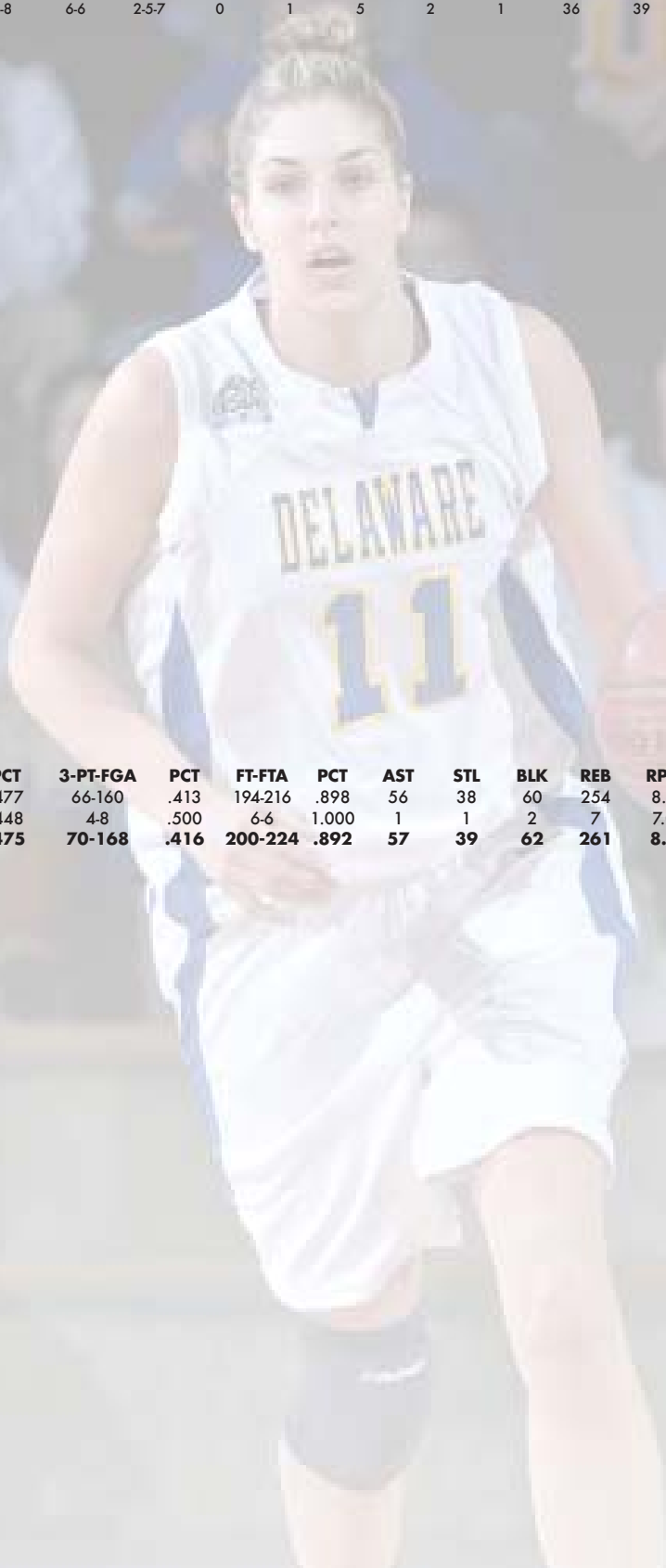
Career Highs

Points: 54 vs. James Madison, 2/18/10
FG Made: 18 vs. James Madison, 2/18/10
FG Attempted: 28 vs. James Madison, 2/18/10
3-Pointers Made: 7 vs. James Madison, 2/18/10
3-Pointers Attempted: 10, twice
FT Made: 11, three times
FT Attempted: 12, twice
Rebounds: 16 at Northeastern, 1/10/10
Assists: 5, three times
Blocks: 7 vs. Hofstra, 3/3/10
Steals: 5 at Hofstra, 1/24/10
Minutes: 50 vs. Drexel, 1/17/10

Season Highs

Points: 36 vs. UMBC, 11/12/10
FG Made: 13 vs. UMBC, 11/12/10
FG Attempted: 29 vs. UMBC, 11/12/10
3-Pointers Made: 4 vs. UMBC, 11/12/10
3-Pointers Attempted: 8 vs. UMBC, 11/12/10
FT Made: 6 vs. UMBC, 11/12/10
FT Attempted: 6 vs. UMBC, 11/12/10
Rebounds: 7 vs. UMBC, 11/12/10
Assists: 1 vs. UMBC, 11/12/10
Blocks: 2 vs. UMBC, 11/12/10
Steals: 1 vs. UMBC, 11/12/10
Minutes: 39 vs. UMBC, 11/12/10

Year	G/GS	FG-FGA	PCT	3-PT-FGA	PCT	FT-FTA	PCT	AST	STL	BLK	REB	RPG	PTS	PPG	Min.	Avg.
2009-10	29/28	257-539	.477	66-160	.413	194-216	.898	56	38	60	254	8.8	774	26.7	1,087	37.5
2010-11	1/1	13-29	.448	4-8	.500	6-6	1.000	1	1	2	7	7.0	36	36.0	39	39.0
Total:	30/29	270-568	.475	70-168	.416	200-224	.892	57	39	62	261	8.7	810	27.0	1,126	37.5



#12 DANIELLE PARKER

Sophomore • Forward • 6-2 • Phoenix, Md. • Dulaney

As A Blue Hen

Expected to challenge once again for a starting position in the Delaware frontcourt.

2009-10 Season

Returned from injury to make an immediate impact for the Blue Hens • one of three players to see action in each of the Hens' 33 games • started 28 contests • was the team's fourth leading scorer having tallied 177 points throughout the season on 5.4 points per game • ranked second on the squad in rebounds with 183 good for 5.5 per game • made 25 steals, dished out 13 assists and swatted away nine blocks • scored in double-digits on seven occasions • recorded a season-high 13 points against Northeastern (2/25) and Navy (12/11) • added 10 points in five games • pulled down 12 boards against Drexel (1/17) and 11 against Hofstra (3/3) • tallied her first career double-double against the Pride on a 10 point, 11 rebound performance • twice served out a pair of assists • made two steals in seven different games • blocked a pair of shots on three separate occasions • twice played a season-high 37 minutes against Drexel (1/31 and 1/17) • shared the UD Most Improved Player Award with Jaquetta May.

2008-09 Season

Appeared in eight games and started three before suffering a season-ending ACL injury during a practice in mid-December • averaged 7.4 points per game and 6.0 rebounds per game • played 30.3 minutes per contest • scored a season-high 12 points against La Salle (11/19) and 11 points against Quinnipiac (11/25) • scored eight points against Maine (12/7) and added seven versus Dartmouth (11/28) and Maryland Eastern Shore (12/6) • twice grabbed a season-high eight rebounds against Quinnipiac and Maryland Eastern Shore • posted a season-high four steals in her Blue Hen career versus Columbia (11/16).

High School

Lettered all four years of high school at Saint Frances Academy (two years) in Baltimore, Md. and Dulaney High School (two years) in Timonium, Md. • First Team All-County and All-Metro selection her junior and senior years • also lettered in volleyball at Dulaney her junior year • honor student • Class President her freshman year • Outstanding Athlete Award winner for Algebra I, II and Geometry during her freshman and sophomore years.

Personal

Danielle Erica Parker • daughter of Derek Parker and Dr. Sharon Thomas-Parker • has a twin brother, Derek • undeclared major at Delaware • former AAU teammate of George Mason's Becky Cox • enjoys writing poetry and drawing in her spare time.



Career Highs

Points: 13, twice
 FG Made: 5, four times
 FG Attempted: 10, twice
 3-Pointers Made: n/a
 3-Pointers Attempted: n/a
 FT Made: 7 vs. Navy, 12/11/09
 FT Attempted: 8, twice
 Rebounds: 12 vs. Drexel, 1/17/10
 Assists: 3 at Massachusetts, 12/10/08
 Blocks: 2, three times
 Steals: 4 vs. Columbia, 11/16/08
 Minutes: 37, twice

Season Highs

Points: 7 vs. UMBC, 11/12/10
 FG Made: 2 vs. UMBC, 11/12/10
 FG Attempted: 5 vs. UMBC, 11/12/10
 3-Pointers Made: n/a
 3-Pointers Attempted: n/a
 FT Made: 3 vs. UMBC, 11/12/10
 FT Attempted: 4 vs. UMBC, 11/12/10
 Rebounds: 3 vs. UMBC, 11/12/10
 Assists: n/a
 Blocks: n/a
 Steals: n/a
 Minutes: 25 vs. UMBC, 11/12/10

Date	Opponent	FG-A	3FG-A	FT-A	O-D-R	PF	A	T	B	S	Pts.	Min.
11/12	UMBC	2-5	0-0	3-4	2-1-3	1	0	1	0	0	7	25
11/16	Villanova											
11/20	at Yale											
11/23	St. Francis (Pa.)											
11/28	at La Salle											
12/1	Princeton											
12/5	at Navy											
12/19	at Penn State											
12/22	Saint Joseph's											
12/29	vs. Vanderbilt											
12/30	vs. TBA											
1/2	Hofstra											
1/6	at Northeastern											
1/9	at Drexel											
1/13	William & Mary											
1/16	Old Dominion											
1/20	at UNCW											
1/23	at Georgia State											
1/27	George Mason											
1/30	at Hofstra											
2/3	Northeastern											
2/6	Drexel											
2/10	at Towson											
2/13	at William & Mary											
2/17	at George Mason											
2/20	James Madison											
2/24	VCU											
2/27	at Old Dominion											
3/2	Towson											

Year	G/GS	FG-FGA	PCT	3-PT-FGA	PCT	FT-FTA	PCT	AST	STL	BLK	REB	RPG	PTS	PPG	Min.	Avg.
2008-09	8/3	24-54	.444	0-0	.000	11-16	.688	7	13	3	48	6.0	59	7.4	242	30.3
2009-10	33/28	62-148	.419	0-0	.000	53-87	.609	13	25	9	183	5.5	177	5.4	821	24.9
2010-11	1/0	2-5	.400	0-0	.000	3-4	.750	0	0	0	3	3.0	7	7.0	25	25.0
Totals	42/31	88-207	.425	0-0	.000	67-107	.626	20	38	12	234	5.5	243	5.7	1,088	25.9

#13 KELSEY BUCHANAN

Freshman • Center • 6-3 • South Riding, Va. • Freedom

As A Blue Hen

Expected to challenge for significant playing time in the Delaware frontcourt.

High School

Played all four years at two-time Virginia State Champion Freedom High School • scored a triple double in first game in state playoffs • hold state block record with 10 • named Player of the Year and All-State in 2010 • earned All-Regional Player of the Year accolades • graduated with over 1,500 points • member of the National Honor Society in junior and senior years • Honor Roll all four years.

Personal

Kelsey Leigh Buchanan • daughter of Ralph Buchanan and Lenora Johnson • has one younger brother • pregame ritual includes listening to the same playlist and wearing lucky socks • mother played basketball at Lafayette • began playing basketball in sixth grade • chose Delaware because she loved the campus and coaches were honest • human services major at Delaware, with aspirations to be a guidance counselor.



Career Highs

Points: n/a
 FG Made: n/a
 FG Attempted: 1 vs. UMBC, 11/12/10
 3-Pointers Made: n/a
 3-Pointers Attempted: n/a
 FT Made: n/a
 FT Attempted: n/a
 Rebounds: 3 vs. UMBC, 11/12/10
 Assists: n/a
 Blocks: n/a
 Steals: n/a
 Minutes: 4 vs. UMBC, 11/12/10

Season Highs

Points: n/a
 FG Made: n/a
 FG Attempted: 1 vs. UMBC, 11/12/10
 3-Pointers Made: n/a
 3-Pointers Attempted: n/a
 FT Made: n/a
 FT Attempted: n/a
 Rebounds: 3 vs. UMBC, 11/12/10
 Assists: n/a
 Blocks: n/a
 Steals: n/a
 Minutes: 4 vs. UMBC, 11/12/10

Date	Opponent	FG-A	3FG-A	FT-A	O-D-R	PF	A	T	B	S	Pts.	Min.
11/12	UMBC	0-1	0-0	0-0	1-2-3	1	0	0	0	0	0	4
11/16	Villanova											
11/20	at Yale											
11/23	St. Francis (Pa.)											
11/28	at La Salle											
12/1	Princeton											
12/5	at Navy											
12/19	at Penn State											
12/22	Saint Joseph's											
12/29	vs. Vanderbilt											
12/30	vs. TBA											
1/2	Hofstra											
1/6	at Northeastern											
1/9	at Drexel											
1/13	William & Mary											
1/16	Old Dominion											
1/20	at UNCW											
1/23	at Georgia State											
1/27	George Mason											
1/30	at Hofstra											
2/3	Northeastern											
2/6	Drexel											
2/10	at Towson											
2/13	at William & Mary											
2/17	at George Mason											
2/20	James Madison											
2/24	VCU											
2/27	at Old Dominion											
3/2	Towson											

Year	G/GS	FG-FGA	PCT	3-PT-FGA	PCT	FT-FTA	PCT	AST	STL	BLK	REB	RPG	PTS	PPG	Min.	Avg.
2010-11	1/0	0-1	.000	0-0	0-0	0-0	0-0	0	0	0	3	3.0	0	0.0	4	4.0
Totals	1/0	0-1	.000	0-0	0-0	0-0	0-0	0	0	0	3	3.0	0	0.0	4	4.0

#20 EVA RIDDICK

Senior • Forward • 6-3 • Rochester, N.Y. • Rush-Henrietta



As A Blue Hen

Fourth-year player expected to start in the Blue Hen frontcourt at forward • enters her senior season ranked 17th in Delaware history with 40 career blocked shots.

2009-10 Season

Served as a co-captain with Kayla Miller • one of three Blue Hens to compete in each of UD's 33 games • made 11 starts • scored 54 points throughout the season to average 1.6 per contest • pulled down 112 boards good for 3.4 per game • made 15 steals, 15 blocks and added six assists for the Blue & Gold • scored a season-high five points against Drexel (3/12) and added four on five occasions • brought down seven rebounds in the Blue Hens' CAA Quarterfinals overtime victory against Drexel • tallied six boards on three other occasions • dished out a pair of assists at Princeton (11/21) • made two steals at Towson (2/28) and against George Mason (2/8) • recorded three blocks against Towson (1/28), and two against Drexel and VCU (1/21) • played a season-high 35 minutes against the Dragons during the CAA Tournament.

2008-09 Season

Appeared in all 30 games while starting 27 in the Delaware frontcourt • earned UD Team Most Improved Player Award • tied for third on the team with 4.7 rebounds per game and added 3.1 points per game • led the team with 35 blocks • ranked ninth in the Colonial Athletic Association with 1.2 blocked shots per game • posted a career-high 10 points and added nine rebounds at Towson (2/22) • pulled down a career-best 10 rebounds and scored six points at Old Dominion (2/15) • recorded nine points and seven rebounds against Stony Brook (12/28) • posted seven points and seven boards at Georgia State (1/11) • pulled down nine rebounds versus William & Mary (2/11) and eight against Georgia State (3/1) • blocked a career-high five shots against Northeastern (2/26).

2007-08 Season

Appeared in 21 games while starting two for the Blue Hens • recorded 44 rebounds and 14 points on the season • also tallied eight steals, five blocks and three assists • scored a season-high four points and added four rebounds in the victory at Georgia State (1/24) • added two points in early season contests against Maryland (11/13), Texas Christian (11/16), Boston College (11/20) and Murray State (11/24) • pulled down a season-best seven rebounds versus TCU (11/16) and VCU (3/2) • collected six boards against La Salle (11/28) • made a season-high three steals against Boston College and added two versus TCU and Murray State.

High School

Named to USA Top 25 Team • All-Greater Rochester selection • named to 2006 New York Academic All-State Team • led Rush-Henrietta High School to state championships in 2006 and 2007 • named to 2006 Class AAA All-Tournament Team after leading Rush-Henrietta to a 24-2 record and the state title • averaged eight points and 10 rebounds per game as a junior • named to NYSSPHA All-State team in 2007 • three-year letterwinner in basketball and four-year letterwinner in track & field • 2007 sectional champion in the high jump • earned the 2006 Empire State Games gold medal • four-year honor roll student.

Personal

Eva M. Riddick • daughter of Hope Hopkins • has a younger sister, Monet • born in Valdosta, Ga. • health behavior science major at Delaware with a concentration in fitness management • minoring in strength and conditioning • enjoys reading in her spare time.

Date	Opponent	FG-A	3FG-A	FT-A	O-D-R	PF	A	T	B	S	Pts.	Min.
11/12	UMBC	1-2	0-0	0-3	5-3-8	1	0	2	1	2	2	26
11/16	Villanova											
11/20	at Yale											
11/23	St. Francis (Pa.)											
11/28	at La Salle											
12/1	Princeton											
12/5	at Navy											
12/19	at Penn State											
12/22	Saint Joseph's											
12/29	vs. Vanderbilt											
12/30	vs. TBA											
1/2	Hofstra											
1/6	at Northeastern											
1/9	at Drexel											
1/13	William & Mary											
1/16	Old Dominion											
1/20	at UNCW											
1/23	at Georgia State											
1/27	George Mason											
1/30	at Hofstra											
2/3	Northeastern											
2/6	Drexel											
2/10	at Towson											
2/13	at William & Mary											
2/17	at George Mason											
2/20	James Madison											
2/24	VCU											
2/27	at Old Dominion											
3/2	Towson											

Year	G/GS	FG-FGA	PCT	3-PT-FGA	PCT	FT-FTA	PCT	AST	STL	BLK	REB	RPG	PTS	PPG	Min.	Avg.
2007-08	21/2	6-18	.333	0-0	.000	2-6	.333	3	8	5	44	2.1	14	0.7	205	9.8
2008-09	30/27	39-92	.424	0-0	.000	14-28	.500	10	27	35	142	4.7	92	3.1	739	24.6
2009-10	33/11	21-45	.467	0-0	.000	12-23	.522	6	15	15	112	3.4	54	1.6	548	16.6
2010-11	1/1	1-2	.500	0-0	.000	0-3	.000	0	2	1	8	8.0	2	2.0	26	26.0
Totals	85/41	67-157	.426	0-0	.000	28-60	.466	19	52	56	306	3.6	162	1.9	1,518	17.8

Career Highs

Points: 10 at Towson, 2/22/09
FG Made: 4, twice
FG Attempted: 6, seven times
3-Pointers Made: n/a
3-Pointers Attempted: n/a
FT Made: 3 vs. James Madison, 1/14/09
FT Attempted: 5 vs. James Madison, 1/14/09
Rebounds: 10 at Old Dominion, 2/15/09
Assists: 3 at UNC Wilmington, 1/22/09
Blocks: 5 vs. Northeastern, 2/26/09
Steals: 3, four times
Minutes: 40 vs. Towson, 2/1/09

Season Highs

Points: 2 vs. UMBC, 11/12/10
FG Made: 1 vs. UMBC, 11/12/10
FG Attempted: 2 vs. UMBC, 11/12/10
3-Pointers Made: n/a
3-Pointers Attempted: n/a
FT Made: n/a
FT Attempted: 3 vs. UMBC, 11/12/10
Rebounds: 8 vs. UMBC, 11/12/10
Assists: n/a
Blocks: 1 vs. UMBC, 11/12/10
Steals: 2 vs. UMBC, 11/12/10
Minutes: 26 vs. UMBC, 11/12/10

#22 LAUREN CARRA

Sophomore • Guard • 5-9 • Dunmore, Pa. • Dunmore

As A Blue Hen

Will challenge for a starting role in the Delaware backcourt • primarily a shooting guard but should see extended action at point guard due to the loss of 2009-10 starter Kayla Miller, who underwent back surgery in November and is out indefinitely.

2009-10 Season:

Saw action in 31 of the Blue Hens' contests • started 14 games during freshman campaign • averaged 6.0 points per game throughout the season to rank third on the squad • pulled down 2.0 rebounds per game • dished out 36 assists and ranked third on the team having made 30 steals for the Hens • collected a block against Old Dominion in UD's CAA opener (1/3) • scored a season-high 15 points at Columbia (12/2) and added 14 on three occasions: Towson (1/28), UMBC (12/5) and Colorado State (11/28) • posted eight double-digit performances throughout the season • twice made a trio of three pointers • pulled down a season-high seven rebounds at Drexel (1/31) • served out five assists at Hofstra (1/24) • made a notable four steals in the Coors Rocky Mountain Invitational Championship game at Colorado State (11/28) • was named to Coors Rocky Mountain Invitational All-Tournament Team • saw 680 minutes of action including a season-high 41 minutes in the Hens' OT game at Drexel (1/31) • named Army ROTC Best of the Blue Hens Athlete of the Week on Nov. 30.

High School

First team All-State Class AA selection as a senior after earning second team honors as a junior and third team honors as a sophomore • scored 2,117 points during her career • averaged 22 points per game as a senior • had jersey retired at Dunmore High School • led Dunmore to a 104-13 record during her four years, including a 55-game conference win streak • Division II Lackawanna League Player of the Year in 2007 and 2008 • three-time All-Region and All-Division First Team selection • led Dunmore to three consecutive District Championships • twice was the leading scorer in the district • also played center field on the softball team her senior year • named a Lackawanna League Division II First Team All-Star selection • honor roll student.

Personal

Lauren Ann Carra • daughter of Joseph and Mary Beth Carra • has a brother, Anthony • Management Information Systems major • aspires to work in the information technology field or education • cites her high school coach, Ross Macciocco, and her father as the biggest influences on her playing career.



Career Highs

Points: 15 at Columbia, 12/2/09
FG Made: 5, twice
FG Attempted: 13 at Drexel, 1/31/10
3-Pointers Made: 3, twice
3-Pointers Attempted: 8 at UMBC, 12/5/09
FT Made: 5, twice
FT Attempted: 7 at Columbia, 12/2/09
Rebounds: 7 at Drexel, 1/31/10
Assists: 5 at Hofstra, 1/24/10
Blocks: 1 vs. ODU, 1/3/10
Steals: 4 at Colorado State, 11/28/09
Minutes: 41 at Drexel, 1/31/10

Season Highs

Points: 5 vs. UMBC, 11/12/10
FG Made: 1 vs. UMBC, 11/12/10
FG Attempted: 3 vs. UMBC, 11/12/10
3-Pointers Made: 1 vs. UMBC, 11/12/10
3-Pointers Attempted: 1 vs. UMBC, 11/12/10
FT Made: 2 vs. UMBC, 11/12/10
FT Attempted: 2 vs. UMBC, 11/12/10
Rebounds: 6 vs. UMBC, 11/12/10
Assists: 4 vs. UMBC, 11/12/10
Blocks: n/a
Steals: 1 vs. UMBC, 11/12/10
Minutes: 33 vs. UMBC, 11/12/10

Date	Opponent	FG-A	3FG-A	FT-A	O-D-R	PF	A	T	B	S	Pts.	Min.
11/12	UMBC	1-3	1-1	2-2	0-6-6	2	4	5	0	1	5	33
11/16	Villanova											
11/20	at Yale											
11/23	St. Francis (Pa.)											
11/28	at La Salle											
12/1	Princeton											
12/5	at Navy											
12/19	at Penn State											
12/22	Saint Joseph's											
12/29	vs. Vanderbilt											
12/30	vs. TBA											
1/2	Hofstra											
1/6	at Northeastern											
1/9	at Drexel											
1/13	William & Mary											
1/16	Old Dominion											
1/20	at UNCW											
1/23	at Georgia State											
1/27	George Mason											
1/30	at Hofstra											
2/3	Northeastern											
2/6	Drexel											
2/10	at Towson											
2/13	at William & Mary											
2/17	at George Mason											
2/20	James Madison											
2/24	VCU											
2/27	at Old Dominion											
3/2	Towson											

Year	G/GS	FG-FGA	PCT	3-PT-FGA	PCT	FT-FTA	PCT	AST	STL	BLK	REB	RPG	PTS	PPG	Min.	Avg.
2009-10	31/14	58-175	.331	29-99	.293	40-60	.667	36	30	1	62	2.0	185	6.0	680	21.9
2010-11	1/1	1-3	.333	1-1	1.000	2-2	1.000	4	1	0	6	6.0	5	5.0	33	33.0
Totals	32/15	59-178	.331	30-100	.300	42-62	.677	40	31	1	68	2.1	190	5.9	713	22.2

#51 SARAH ACKER

Junior • Center • 6-3 • Nanticoke, Pa. • Greater Nanticoke (Saint Joseph's)

As A Blue Hen

Will challenge for a starting position in the Delaware frontcourt following the end of the first semester.

2008-09 at Saint Joseph's

Played in one game with the Hawks before sitting out remainder of season for personal reasons.

2007-08 at Saint Joseph's

Led team to a 17-14 overall record • started in 30 games while playing in 31 as a freshman • led team in rebounds 24 times • first freshman to lead team in scoring (11.9), rebound (8.7) and blocks (46 • first Saint Joseph's freshman to be named first-team All-Big 5 • named Big-5 Rookie of the Year • earned third-team Atlantic Ten and All-Rookie Team honors • set freshman record in rebounds (271), also ranking her eighth-most in a single season • 46 blocks rank fourth in a single season • led A-10 in field goal percentage (59.6), third in rebound and fifth in blocks • named team's Best Offensive Player and earned Hilton Philadelphia Hawk Classic All-Tournament Team accolades.

High School

Led Greater Nanticoke to a 58-2 record her final two seasons, twice winning the Wyoming Valley Conference and AAA District II Championships • as a senior, averaged 22 points, 18 rebounds and 10 blocks per game, earning Second Team All-Pennsylvania Interscholastic Athletic Association accolades • named both the 2006-07 Citizens' Voice and Times Ledger Player of the Year • three-time Wyoming Valley Conference MVP and Wyoming Valley Conference First Team All-Scholastic honoree • 2006-07 Gatorade Player of the Year nominee and All-American Honorable Mention by Street & Smith's • finished her high school career with over 1,500 points, 1,500 rebounds and 500 blocks • also earned All-PIAA honors after leading Greater Nanticoke to the Girls AA District II Volleyball Championship • lettered in track and field.

Personal

Sarah Samantha Acker • daughter of Terry and Lorraine Acker • has an older sister and a younger brother • began playing basketball in third grade • sociology degree at Delaware with aspirations to be a veterinary technician.

Date	Opponent	FG-A	3FG-A	FT-A	O-D-R	PF	A	T	B	S	Pts.	Min.
11/12	UMBC	--	--	--	--	--	--	--	--	--	--	--
11/16	Villanova	--	--	--	--	--	--	--	--	--	--	--
11/20	at Yale	--	--	--	--	--	--	--	--	--	--	--
11/23	St. Francis (Pa.)	--	--	--	--	--	--	--	--	--	--	--
11/28	at La Salle	--	--	--	--	--	--	--	--	--	--	--
12/1	Princeton	--	--	--	--	--	--	--	--	--	--	--
12/5	at Navy	--	--	--	--	--	--	--	--	--	--	--
12/19	at Penn State	--	--	--	--	--	--	--	--	--	--	--
12/22	Saint Joseph's	--	--	--	--	--	--	--	--	--	--	--
12/29	vs. Vanderbilt	--	--	--	--	--	--	--	--	--	--	--
12/30	vs. TBA	--	--	--	--	--	--	--	--	--	--	--
1/2	Hofstra	--	--	--	--	--	--	--	--	--	--	--
1/6	at Northeastern	--	--	--	--	--	--	--	--	--	--	--
1/9	at Drexel	--	--	--	--	--	--	--	--	--	--	--
1/13	William & Mary	--	--	--	--	--	--	--	--	--	--	--
1/16	Old Dominion	--	--	--	--	--	--	--	--	--	--	--
1/20	at UNCW	--	--	--	--	--	--	--	--	--	--	--
1/23	at Georgia State	--	--	--	--	--	--	--	--	--	--	--
1/27	George Mason	--	--	--	--	--	--	--	--	--	--	--
1/30	at Hofstra	--	--	--	--	--	--	--	--	--	--	--
2/3	Northeastern	--	--	--	--	--	--	--	--	--	--	--
2/6	Drexel	--	--	--	--	--	--	--	--	--	--	--
2/10	at Towson	--	--	--	--	--	--	--	--	--	--	--
2/13	at William & Mary	--	--	--	--	--	--	--	--	--	--	--
2/17	at George Mason	--	--	--	--	--	--	--	--	--	--	--
2/20	James Madison	--	--	--	--	--	--	--	--	--	--	--
2/24	VCU	--	--	--	--	--	--	--	--	--	--	--
2/27	at Old Dominion	--	--	--	--	--	--	--	--	--	--	--
3/2	Towson	--	--	--	--	--	--	--	--	--	--	--

Year	G/GS	FG-FGA	PCT	3-PT-FGA	PCT	FT-FTA	PCT	AST	STL	BLK	REB	RPG	PTS	PPG	Min.	Avg.
2010-11	---	---	---	---	---	---	---	---	---	---	---	---	---	---	---	---
Totals	---	---	---	---	---	---	---	---	---	---	---	---	---	---	---	---



Career Highs	
Points:	n/a
FG Made:	n/a
FG Attempted:	n/a
3-Pointers Made:	n/a
3-Pointers Attempted:	n/a
FT Made:	n/a
FT Attempted:	n/a
Rebounds:	n/a
Assists:	n/a
Blocks:	n/a
Steals:	n/a
Minutes:	n/a

Season Highs	
Points:	n/a
FG Made:	n/a
FG Attempted:	n/a
3-Pointers Made:	n/a
3-Pointers Attempted:	n/a
FT Made:	n/a
FT Attempted:	n/a
Rebounds:	n/a
Assists:	n/a
Blocks:	n/a
Steals:	n/a
Minutes:	n/a

#55 JASMINE GIBSON

Junior • Center • 6-3 • New Castle, Del. • Sanford



As A Blue Hen

Third-year team member expected to see significant playing time in the Blue Hen frontcourt

2009-10 Season

Saw action in 16 of the Blue Hens' contests • started a pair of games • averaged 2.6 points per game and 2.4 rebounds per contest • recorded nine blocks, four steals and one assist throughout the season • had a stand-out performance at William & Mary (2/21) • scored a season-high 12 points and pulled down a game- and season-high 14 boards for her first career double-double • scored 12 points on 5-for-8 shooting at W&M • collected a pair of steals at Columbia (12/2) • twice made two blocks • saw a season-high 24 minutes of action at Towson (2/28) and 22 minutes at Columbia • recorded 155 minutes of game action throughout the

2008-09 Season

Appeared in 22 games during her freshman season • averaged 2.0 points and 1.2 rebounds in 8.4 minutes per game • scored a season-high six points against Loyola Marymount (12/29) and Northeastern (1/29) • added five points versus VCU (1/18) and Northeastern (2/26) • grabbed a season-high four rebounds against Hofstra (2/5) as she played a season-high 16 minutes • pulled down three boards at Loyola Marymount (12/29) • blocked a season-high three shots against Stony Brook (12/28).

High School

Standout basketball player at Christiana High School and Sanford School • earned four varsity letters in basketball and three in volleyball • First Team All-Conference selection from 2006-2008 • earned First Team All-State honors in 2008 • McDonald's All-American nominee • led team to AAU Division II National Championship in 2007.

Personal

Jasmine Nichole "Jazz" Gibson • born in Philadelphia, Pa. • daughter of Denard Montgomery and Nichole Gibson • father played basketball at the University of Delaware from 1988-1992 • cites father as greatest influence on basketball career and has pre-game conversations with him • has a step-brother, Cameren Johnson • undeclared major at Delaware • worked as a counselor at the Newark Boys and Girls Club during the summer • enjoys reading and writing poetry in her spare time.

Career Highs

Points: 12 at W&M, 2/21/10
FG Made: 5 at W&M, 2/21/10
FG Attempted: 8 at W&M, 2/21/10
3-Pointers Made: n/a
3-Pointers Attempted: n/a
FT Made: 3 vs. Northeastern, 2/26/09
FT Attempted: 7 at Hofstra, 2/5/09
Rebounds: 14 at W&M, 2/21/10
Assists: 1 at Colorado State, 11/28/09
Blocks: 2, five times
Steals: 2 at Columbia, 12/2/09
Minutes: 22 at Columbia, 12/2/09

Season Highs

Points: n/a
FG Made: n/a
FG Attempted: n/a
3-Pointers Made: n/a
3-Pointers Attempted: n/a
FT Made: n/a
FT Attempted: n/a
Rebounds: n/a
Assists: n/a
Blocks: n/a
Steals: n/a
Minutes: n/a

Date	Opponent	FG-A	3FG-A	FT-A	O-D-R	PF	A	T	B	S	Pts.	Min.
11/12	UMBC	-	-	-	-	-	-	-	-	-	-	-
11/16	Villanova	-	-	-	-	-	-	-	-	-	-	-
11/20	at Yale	-	-	-	-	-	-	-	-	-	-	-
11/23	St. Francis (Pa.)	-	-	-	-	-	-	-	-	-	-	-
11/28	at La Salle	-	-	-	-	-	-	-	-	-	-	-
12/1	Princeton	-	-	-	-	-	-	-	-	-	-	-
12/5	at Navy	-	-	-	-	-	-	-	-	-	-	-
12/19	at Penn State	-	-	-	-	-	-	-	-	-	-	-
12/22	Saint Joseph's	-	-	-	-	-	-	-	-	-	-	-
12/29	vs. Vanderbilt	-	-	-	-	-	-	-	-	-	-	-
12/30	vs. TBA	-	-	-	-	-	-	-	-	-	-	-
1/2	Hofstra	-	-	-	-	-	-	-	-	-	-	-
1/6	at Northeastern	-	-	-	-	-	-	-	-	-	-	-
1/9	at Drexel	-	-	-	-	-	-	-	-	-	-	-
1/13	William & Mary	-	-	-	-	-	-	-	-	-	-	-
1/16	Old Dominion	-	-	-	-	-	-	-	-	-	-	-
1/20	at UNCW	-	-	-	-	-	-	-	-	-	-	-
1/23	at Georgia State	-	-	-	-	-	-	-	-	-	-	-
1/27	George Mason	-	-	-	-	-	-	-	-	-	-	-
1/30	at Hofstra	-	-	-	-	-	-	-	-	-	-	-
2/3	Northeastern	-	-	-	-	-	-	-	-	-	-	-
2/6	Drexel	-	-	-	-	-	-	-	-	-	-	-
2/10	at Towson	-	-	-	-	-	-	-	-	-	-	-
2/13	at William & Mary	-	-	-	-	-	-	-	-	-	-	-
2/17	at George Mason	-	-	-	-	-	-	-	-	-	-	-
2/20	James Madison	-	-	-	-	-	-	-	-	-	-	-
2/24	VCU	-	-	-	-	-	-	-	-	-	-	-
2/27	at Old Dominion	-	-	-	-	-	-	-	-	-	-	-
3/2	Towson	-	-	-	-	-	-	-	-	-	-	-

Year	G/GS	FG-FGA	PCT	3-PT-FGA	PCT	FT-FTA	PCT	AST	STL	BLK	REB	RPG	PTS	PPG	Min.	Avg.
2008-09	22/0	16-33	.485	0-0	.000	12-25	.480	0	2	12	26	1.2	44	2.0	185	8.4
2009-10	16/2	19-37	.514	0-0	.000	3-12	.250	1	2	9	39	2.4	41	2.6	155	9.7
Totals	38/2	35-70	.500	0-0	.000	15-37	.405	1	4	21	65	1.7	85	2.2	340	8.9

#15 AKEEMA RICHARDS

Soph. (R) • Guard • 5-7 • Baltimore, Md. • Western (West Virginia)

As A Blue Hen

Ineligible for 2010-11 season due to NCAA transfer rules.

2009-10 Season at West Virginia

Played in 31 games, making one start • averaged 2.1 points per game • hit .403 percent (29-72) of her field goals • pulled down 26 defensive rebounds while recording 27 steals • played in 9.9 minutes per contest • team went 29-6 overall and 13-3 in the Big East • scored two points and had one rebound in first round of NCAA Tournament • team reached second round of the NCAA Tournament • qualified for Dean's List at WVU.

High School

Played all four years at Western High School in Baltimore • team won city and regional championships four consecutive years • reached semifinals on two occasions • member of the National Honor Society.

Personal

Akeema S. Richards • daughter of Anderson and Debra Richards • has four siblings • will see former teammates Sheree Ledbetter (Towson) and Tyler Hale (Drexel) • civil engineering major at Delaware.



#21 TRUMAE LUCAS

Junior (R) • Guard • 5-8 • Greensboro, N.C. • Grimsley (Florida)

As A Blue Hen

Ineligible for 2010-11 season due to NCAA transfer rules.

2009-10 at Florida

Played in 30 games, including all 16 conference games, starting the first three games of the year • averaged 5.3 points per game in conference and non-conference games • grabbed 1.9 rebounds per game • averaged 16.4 minutes per game • scored a career-best 15 points in a win over Jacksonville • leading guard scorer off the bench • paced team in scoring on three occasions • shot .362 percent from the floor (64-177) • recorded 21 steals and 53 assists • sank 11 consecutive free throws • earned All-Southeastern Conference Academic Honor status • team went 39-25 during her two years at Florida.

2008-09 at Florida

Saw time in 31 games with five starts • averaged 4.1 points per game • tallied 23 steals and 31 assists • knocked down .455 percent (10-22) of her three pointers • snagged 40 total rebounds • scored points in 21 games, including eight points in the team's first-round NCAA tournament 70-57 win over Temple • averaged 15.2 minutes a contest • named to SEC Freshman Academic Honor Roll.

High School

Played for four seasons at Grimsley High School in Greensboro, N.C. • earned four letters • named to All-Conference team • team won conference and tournament championships • named to All-Area team • named Most Outstanding Player of 2007 North Carolina 4-A State Championship game • scored 33 points in title game • led team to 29-1 record in senior year while averaging team-best 16.2 points per game • played in North Carolina versus South Carolina game, scoring 12 points • also competed in track, qualifying for regional's in the 4x200m relay and the 200m dash • earned honor roll status.

Personal

Trumae "Mae" C. Lucas • daughter of Trudah Lucas • has two siblings, one older and one younger • began playing basketball when she was five years old • lists mother as biggest influence for keeping her around basketball her entire life • communications major at the University with ambitions of being a sports reporter.



2010-11 Delaware Women's Basketball
 Delaware Combined Team Statistics (as of Nov 16, 2010)
 All games

RECORD:	OVERALL	HOME	AWAY	NEUTRAL
ALL GAMES	1-0	1-0	0-0	0-0
CONFERENCE	0-0	0-0	0-0	0-0
NON-CONFERENCE	1-0	1-0	0-0	0-0

##	Player	gp-gs	min	avg	Total		3-Point		F-Throw		Rebounds				pf	dq	a	to	blk	stl	pts	avg		
					fg-fga	fg%	3fg-fga	3fg%	ft-fta	ft%	off	def	tot	avg										
02	Bailey, Jocelyn	1-1	25	25.0	1-5	.200	0-0	.000	1-2	.500	3	4	7	7.0	4	0	0	2	1	0	3	3.0		
03	May, Jaquetta	1-0	18	18.0	0-2	.000	0-0	.000	3-4	.750	2	5	7	7.0	3	0	2	3	1	3	3	3.0		
04	McLean, Meghan	1-0	8	8.0	0-2	.000	0-2	.000	2-2	1.000	0	2	2	2.0	2	0	0	1	0	0	2	2.0		
05	Kabongo, Vanessa	1-1	22	22.0	0-3	.000	0-0	.000	1-2	.500	2	2	4	4.0	1	0	0	4	0	1	1	1.0		
11	Delle Donne, Elena	1-1	39	39.0	13-29	.448	4-8	.500	6-6	1.000	2	5	7	7.0	0	0	1	5	2	1	36	36.0		
12	Parker, Danielle	1-0	25	25.0	2-5	.400	0-0	.000	3-4	.750	2	1	3	3.0	1	0	0	1	0	0	7	7.0		
13	Buchanan, Kelsey	1-0	4	4.0	0-1	.000	0-0	.000	0-0	.000	1	2	3	3.0	1	0	0	0	0	0	0	0.0		
20	Riddick, Eva	1-1	26	26.0	1-2	.500	0-0	.000	0-3	.000	5	3	8	8.0	1	0	0	2	1	2	2	2.0		
22	Carra, Lauren	1-1	33	33.0	1-3	.333	1-1	1.000	2-2	1.000	0	6	6	6.0	2	0	4	5	0	1	5	5.0		
Team											1	0	1											
Total.....		1	200		18-52	.346	5-11	.455	18-25	.720	18	30	48	48.0	15	0	7	23	5	8	59	59.0		
Opponents.....		1	200		16-57	.281	6-19	.316	6-7	.857	11	20	31	31.0	23	-	8	18	3	5	44	44.0		

TEAM STATISTICS	DELAWARE	OPP	Date	Opponent	Score	Att.
SCORING	59	44	11/12/10	UMBC	w 59-44	2079
Points per game	59.0	44.0	* - Conference game			
Scoring margin	+15.0	-				
FIELD GOALS-ATT	18-52	16-57				
Field goal pct	.346	.281				
3 POINT FG-ATT	5-11	6-19				
3-point FG pct	.455	.316				
3-pt FG made per game	5.0	6.0				
FREE THROWS-ATT	18-25	6-7				
Free throw pct	.720	.857				
F-Throws made per game	18.0	6.0				
REBOUNDS	48	31				
Rebounds per game	48.0	31.0				
Rebounding margin	+17.0	-				
ASSISTS	7	8				
Assists per game	7.0	8.0				
TURNOVERS	23	18				
Turnovers per game	23.0	18.0				
Turnover margin	-5.0	-				
Assist/turnover ratio	0.3	0.4				
STEALS	8	5				
Steals per game	8.0	5.0				
BLOCKS	5	3				
Blocks per game	5.0	3.0				
ATTENDANCE	2079	0				
Home games-Avg/Game	1-2079	0-0				
Neutral site-Avg/Game	-	0-0				

Score by Periods	1st	2nd	Totals
Delaware	29	30	59
Opponents	18	26	44

2010-11 Delaware Women's Basketball
 Delaware Team Game-by-Game (as of Nov 16, 2010)
 All games

TEAM STATISTICS

Opponent	Date	Score		Total		3-Pointers		Free throws		Rebounds				pf	a	t/o	blk	stl	pts	avg
				fg-fga	pct	3fg-fga	pct	ft-fta	pct	off	def	tot	avg							
UMBC	11/12/10	59-44	W	18-52	.346	5-11	.455	18-25	.720	18	30	48	48.0	15	7	23	5	8	59	59.0
Delaware		59		18-52	.346	5-11	.455	18-25	.720	18	30	48	48.0	15	7	23	5	8	59	59.0
Opponents		44		16-57	.281	6-19	.316	6-7	.857	11	20	31	31.0	23	8	18	3	5	44	44.0

Games played: 1
 Points/game: 59.0
 FG Pct: 34.6
 3FG Pct: 45.5
 FT Pct: 72.0

Rebounds/game: 48.0
 Assists/game: 7.0
 Turnovers/game: 23.0
 Assist/turnover ratio: 0.3
 Steals/game: 8.0
 Blocks/game: 5.0

2010-11 Delaware Women's Basketball
 Delaware Points-Rebounds-Assists (as of Nov 16, 2010)
 All games

Opponent	Date	Score		02 BAILEY,JOC	03 MAY,JAQUET	04 MCLEAN,MEG	05 KABONGO,VA	11 DELLE DONN	12 PARKER,DAN	13 BUCHANAN,K
UMBC	11/12/10	59-44	w	3-7-0	3-7-2	2-2-0	1-4-0	36-7-1	7-3-0	0-3-0

Opponent	Date	Score		20 RIDDICK,EV	22 CARRA,LAUR
UMBC	11/12/10	59-44	w	2-8-0	5-6-4