

# University of Delaware Fightin' Blue Hens



2010-11 Season Game #5 Media Notes • Sunday, Nov. 28, 2010 • 2 p.m. • Tom Gola Arena (4,000) • Philadelphia, Pa.  
Radio Coverage: The Ticket AM 1290 • Matt Janus Play-By-Play • Matt Ryan Color • www.am1290.com

## 2010-11 Schedule & Results

Nov. 12	UMBC.....	W 59-44
Nov. 16	Villanova.....	W 69-62
Nov. 20	at Yale.....	W 79-61
Nov. 23	St. Francis (Pa.).....	W 68-52
Nov. 28	at La Salle.....	2 p.m.
Dec. 1	Princeton.....	7 p.m.
Dec. 5	at Navy.....	2 p.m.
Dec. 19	at Penn State.....	2 p.m.
Dec. 22	Saint Joseph's.....	6 p.m.
Dec. 29	vs. Vanderbilt #.....	5 p.m.
Dec. 30	vs. Va. Tech/Alcorn State #.....	5/7 p.m.
Jan. 2	Hofstra *.....	2 p.m.
Jan. 6	at Northeastern *.....	7 p.m.
Jan. 9	at Drexel *.....	2 p.m.
Jan. 13	William & Mary *.....	7 p.m.
Jan. 16	Old Dominion *.....	2 p.m.
Jan. 20	at UNC Wilmington *.....	7 p.m.
Jan. 23	at Georgia State *.....	2 p.m.
Jan. 30	Hofstra *.....	2 p.m.
Feb. 3	Northeastern *.....	7 p.m.
Feb. 6	Drexel *.....	2 p.m.
Feb. 10	at Towson *.....	7 p.m.
Feb. 13	at William & Mary *.....	2 p.m.
Feb. 17	at George Mason *.....	7 p.m.
Feb. 20	James Madison *.....	3 p.m.
Feb. 24	Virginia Commonwealth *.....	7 p.m.
Feb. 27	at Old Dominion *.....	3 p.m.
Mar. 2	Towson *.....	7 p.m.
Mar. 10-13	CAA Tournament.....	TBA

The Show Place Arena  
Upper Marlboro, Md.

# Hilton Garden Hokie Classic at Va. Tech  
\* Colonial Athletic Association Game

## Delaware (4-0 overall, 0-0 Colonial Athletic Association) at La Salle (2-3 overall, 0-0 Atlantic 10) Game #5 • Sunday, Nov. 28 • 2 p.m. Philadelphia, Pa. • Tom Gola Arena (4,000)



### Delaware Probable Starters

G #2	Jocelyn Bailey	Jr.	6-0
G #5	Vanessa Kabongo	Jr.	5-10
G #22	Lauren Carra	So.	5-9
F #11	Elena Delle Donne	So.	6-5
F #12	Danielle Parker	So.	6-2

### La Salle Probable Starters

G #5	Ashley Gale	Sr.	6-1
G #11	Nadia Duncan	Jr.	5-8
G #21	Alexis Scott	So.	5-9
F #31	Jess Koci	Fr.	5-11
F #55	Chelsea Connor	Sr.	6-3

### The Series...

Of the teams on its not conference schedule, Delaware has not faced a team more often than La Salle University, have met 25 times. The Explorers may hold a 16-9 advantage in the meetings, but the Hens have dominated the series as of late, winning eight of the last 10 match ups. During that time, dating back to the 2001-02 season, the Blue Hens have averaged 66.4 points per game, holding the Explorers to just 54.4 points on average. Delaware has won the last two games, taking the 2008-09 game 71-57 and last season's match up 54-46. Last season, Elena Delle Donne had a game-high tying 17 points while she and Lauren Carra each handed out three assists.

**UD Overall Series Record: 16-9**  
**UD vs. La Salle in Newark: 6-7**  
**UD vs. La Salle in Philadelphia: 3-8**  
**UD vs. La Salle at Neutral Site: 0-1**

## 2010-11 Numerical Roster

No.	Name	Yr.	Pos.	Ht.	Hometown/High School (Last School)	PPG	RPG	A	B	S
2	Jocelyn Bailey **	Jr.	G	6-0	Kensington, Md./The Bullis School	5.3	6.0	0	2	1
3	Jaquetta May *	So.	G	5-9	Wilmington, Del./Delcastle	5.3	5.0	6	4	7
4	Meghan McLean **	Jr.	G	5-9	Pittsburgh, Pa./Upper St. Clair	0.5	1.8	1	0	0
5	Vanessa Kabongo **	Jr.	G	5-10	Toronto, Canada/Eastern Commerce	3.3	1.8	3	0	2
10	Kayla Miller *	Jr.	G	5-8	Wilmington, Del./Ursuline Academy (G. Washington)	—	—	—	—	—
11	Elena Delle Donne *	So.	F/G	6-5	Wilmington, Del./Ursuline Academy	34.2	9.0	9	8	2
12	Danielle Parker *	So.	F	6-2	Phoenix, Md./Dulaney	8.3	9.3	0	1	3
13	Kelsey Buchanan	Fr.	C	6-3	South Riding, Va./Freedom	0.7	1.7	0	1	0
20	Eva Riddick ***	Sr.	F	6-3	Rochester, N.Y./Rush-Henrietta	0.7	3.3	0	1	2
22	Lauren Carra *	So.	G	5-9	Dunmore, Pa./Dunmore	6.8	3.0	13	1	3
45	Chelsea Craig	So.	F	6-2	Rockville, Md./Wootton	—	—	—	—	—
51	Sarah Acker	Jr.	C	6-3	Nanticoke, Pa./Greater Nanticoke (Saint Joseph's)	8.5	10.5	0	4	4
55	Jasmine Gibson **	Jr.	C	6-3	New Castle, Del./Sanford	—	—	—	—	—

## GENERAL INFORMATION

Location ..... Newark, Delaware 19716  
Founded ..... 1743  
Enrollment ..... 16,000 Undergraduates  
Nickname ..... Fightin' Blue Hens  
Official Mascot ..... YoUDEe  
Colors ..... Royal Blue & Gold  
Arena; ..... Bob Carpenter Center (Frank Acierno Arena)  
Capacity ..... 5,000  
Affiliation ..... NCAA Division I  
Conference ..... Colonial Athletic Association  
President ..... Dr. Patrick T. Harker  
NCAA Faculty Representative ..... Dr. John L. Burmeister

## STAFF

Dir. of Athletics & Rec. Services ..... Bernard M. Muir  
Senior Associate AD ..... Samantha Huge  
Associate AD, SWA ..... Susan Groff  
Associate AD, Business Ops. .... Scott Eatough  
Associate AD, External Rel.  
..... Stacey Bunting-Thompson  
Associate AD, Rec. Services ..... Jake Olkkola  
Assistant AD, Rec. Services ..... Dr. Barry Miller  
Assistant AD, Compliance ..... Brian Baptiste  
Student-Athlete  
Eligibility/Financial Aid Coord. .... Kerri Cebula  
Director, Athletics Development ..... Dr. Scarlett Schmidt  
Assist. AD, Sports Medi. Physician ..... Dr. Andrew Reisman  
Sports Medicine Physician ..... Dr. Geoffrey Gustavsen  
Sports Medicine Nurses ..... Lisa Sinclair, Mary Zagar  
Head Athletic Trainer ..... John Smith  
Associate Head Athletic Trainer ..... Joan Couch  
Assistant Athletic Trainers ..... Dan Watson,  
Courtney Butterworth, Erin McLaughlin (WBB)  
Strength & Conditioning Coach ..... Auggie Maurelli

## MEDIA RELATIONS

Athletics Media Relations Phone // Fax 302-831-2186 // 8653  
Assistant Athletic Director, Media Relations. Scott Selheimer  
Assistant Sports Information Director ..... Kevin Tritt  
Sports Information Intern  
(Women's Basketball Contact) ..... John C. Stark  
Stark's Cell Phone ..... 570-809-1946  
Stark's E-Mail ..... starkj@udel.edu  
Sports Information Interns ..... Dan Lauletta, John Stark  
BCC Press Row Phone ..... 302-831-8715  
Internet Address ..... www.bluehens.com  
Athletics Media Relations ..... Linda McCormick

Mailing Address  
631 South College Avenue  
Bob Carpenter Center  
Newark, Del. 19716

## Gameday Interviews

Delaware head coach Tina Martin holds a press conference in the BCC Auditorium, room 102, approximately 10 minutes after the game following a cooling off period and her postgame show with the Blue Hen Basketball Radio Network.

Selected players will also be available outside the locker room as well, usually while Coach Martin is conducting her radio interview. The University of Delaware locker room is closed to members of the media during regular season competition.

Quote sheets will be done by the UD Athletics Media Relations staff for both teams, if requested, and will be available in the media room.

Pregame interview requests for players or assistant coaches should also be made prior to gameday. Approval is on a case-by-case basis.

## Non-Gameday Interviews

All requests to interview players or coaches during the week should be made through the Athletics Media Relations Office and at least one day in advance so that academic or athletic schedules are not disrupted.

## Credentials/Press Row

Requests for press credentials and parking passes should be made to Scott Selheimer. Please make arrangements at least two days in advance of each game.

Press row at Bob Carpenter Center/Acierno Arena is located at course side opposite the player and game officials' benches. All press guests are required to show a pass for admittance to the arena.

The media entrance is located in the rear of the building (loading dock) on the east side of the Bob Carpenter Center. Parking is located in the rear of the Bob Carpenter Center.



## The Series Game By Game

1978-79.....	*UD, 68-58
1979-80.....	LU, 59-56; LU, 63-60
1980-81.....	*UD, 86-79
1981-82.....	LU, 69-46
1982-83.....	* LU, 83-78 (OT)
1983-84.....	LU, 72-64
1984-85.....	*LU, 62-57
1985-86.....	LU, 65-55
1986-87.....	*LU, 60-56
1987-88.....	LU, 68-58
1988-89.....	*LU, 67-63
1993-94.....	*LU, 69-64
1995-96.....	LU, 76-56
1996-97.....	*LU, 68-45
1997-98.....	LU, 76-46
2001-02.....	*UD, 83-66
2002-03.....	LU, 63-52
2003-04.....	*UD, 69-47
2004-05.....	UD, 68-67
2005-06.....	*UD, 70-60
2006-07.....	UD, 66-52
2007-08.....	*LU, 54-43
2008-09.....	UD, 71-57
2009-10.....	*UD, 54-46

\* UD Home Games

## La Salle's Last Time Out

The Explorers picked up their second win of the season and first in Tom Gola Arena on Monday night, taking out Oral Roberts 87-67.

La Salle used a balanced scoring effort in the Atlantic 10/Summit League clash, putting six of its nine in double digits. Ashley Gale helped the Explorers lead the entire game, putting 22 points, while Jess Koci posted a double-double with 10 points and 14 boards.

Monmouth transfer Alexis Scott, who became eligible this season, put 19 points and dished out a game-high eight helpers. Nadia Duncan finished with 13 points and nine boards, as Ebonee Jones and Chelsea Connor registered 12 and 11 points, respectively.

La Salle controlled the Golden Eagle's shooting in the first half, holding Oral Roberts to just 24.1 percent from the field (7-29), including zero-for-eight from beyond the arc, while La Salle jumped out to a 33-point advantage early in the second half, its largest lead of the night. The Explorers used a sharp-shooting second half field goal percentage of 44.2 (19-43) to pull away, despite Oral Roberts putting up 51 second half points.

The two squads were evenly matched on the boards, with both tallying 48. La Salle was close to balanced on the boards, grabbing 26 defensive caroms and 22 offensive rebounds, which helped the Explorers put up 17 second points.

## Scouting the Explorers

La Salle, which sits at 2-3 overall this season, has picked up wins both at home and on the road, upending Loyla (Md.) 64-57 in its first game of the season.

The Explorers have three players who average double-digit points, led by Ashley Gale, who has been a solid bench player for La Salle, with 13.6 points a night. She has played in all five games, making her first start Monday night. Nadia Duncan and Alexis Scott each put up 11.0 points per game.

Despite its three setbacks this season, La Salle has narrowly outrebounded its opponents 40.2 to 40.0 per game. The Explorers have grabbed 84 of their 201 rebounds on offense.

Jess Koci, who leads La Salle in rebounds per game (9.2) also leads on the offensive glass, pulling down 26 of her 46 rebounds on offense, averaging 5.2 per game.

La Salle comes out hot early in its contests, putting up 152 first-half points, averaging 30.4, while holding opponents to an average of 28.2. But the Explorers let their opponents back into games in the second half, being outscored 176-142 in the second stanza.

## Tale of the Tape 2010-11 Stats

UD (4-0)	vs.	La Salle (2-3)
68.8.....	Points .....	58.8
54.8.....	Points Allowed.....	63.4
.438.....	Field Goal %.....	.311
.441.....	3-Point %.....	.239
.787.....	Free Throw % .....	.710
45.5.....	Rebounds Per Game .....	40.2
+17.5.....	Rebounding Margin.....	+0.2
32.....	Assists.....	56
71.....	Turnovers .....	74
24.....	Steals.....	45
22.....	Blocks .....	9

## UD's Last Five

vs. Richmond - L, 67-53 - 3/13/10  
 vs. UMBC - W, 59-44 - 11/12/10  
 vs. Villanova - W, 69-62 - 11/16/10  
 at Yale - W, 79-61 - 11/20/10  
 vs. St. Francis (Pa.) - 11/23/10 - 7 p.m.

## UD's Next Five

at La Salle - 11/28/10 - 2 p.m.  
 vs. Princeton - 12/1/10 - 7 p.m.  
 at Navy - 12/5/10 - 7 p.m.  
 at Penn State - 12/19/10 - 2 p.m.  
 vs. Saint Joseph's - 12/22/10 - 6 p.m.

## Media Coverage

### Sunday's Media Outlets:

**Blue Hens Radio Network:** [Click Here](#)

**Live Video/Stats:** [Click Here](#)

### UD Basketball on the Net:

Delaware athletics information is available via the internet through [www.bluehens.com](http://www.bluehens.com). Box scores and game stories are typically posted within an hour of the conclusion of each UD basketball game, while cumulative statistics are also updated and posted after each contest. Media notes are available in a PDF format within 24 hours of the start of each game. In addition, livestats are available for all UD home games.

### UD Basketball on the Radio:

For the sixth straight season, all Delaware women's basketball games will be broadcast the radio. All games will be carried on The Ticket, 1290 AM. John Sadak (play-by-play) and Matt Janus (color) will call all the action. Additionally, most UD women's basketball games are broadcast by the UD student radio station, WVUD 91.3 FM. Real Audio links for both broadcasts are available through the UD Web site.

### UD Basketball on Television:

The University of Delaware women's basketball team will appear on television twice during the 2010-11 regular season as announced by the Colonial Athletic Association at the league's Media Day. The Blue Hens will make their television appearances on Sunday, Feb. 20 and Sunday, Feb. 27. UD hosts James Madison on Feb. 20 and the game will serve as Delaware's **Pink Zone game**. Tipoff is set for 3 p.m. The Hens' next TV appearance will be on Sunday, Feb. 27 when Delaware travels to Old Dominion for a 3 p.m. tip. The games will be broadcast on The ComcastSports Net and The Comcast Network.

### Watch Us On The Web

University of Delaware basketball fans who can't make it to the Bob Carpenter Center to catch the Blue Hens will now be able to see the action live on the UD athletics web site.

For the first time all Blue Hen men's and women's basketball home games will be webstreamed live available at [www.BlueHens.com](http://www.BlueHens.com).



## First Time For Everything

Saturday's game marked a few firsts this season for both Yale and Delaware. The Bulldogs played the first game of the 2010-11 schedule, either men's or women's, in the John J. Lee Amphitheater, while the Blue Hens hit the road for the first time. It was also the first time the teams met and was Delaware's first trip to New Haven, Conn.

## Delaware vs. Ivy League

After last weekend's match up with Yale, Delaware now holds a 28-17 record over the Ivy League schools, including even or winning series against Brown (2-0), Columbia (1-1) Pennsylvania (9-6), Princeton (14-6) and now 1-0 versus Yale. The Blue Hens have yet to play Cornell while Dartmouth and Harvard hold advantages over Delaware at 3-1 and 1-0, respectively.

## Delaware and The Big 5

This season, the Blue Hens will take on three of the Philadelphia Big 5, which is comprised of Villanova (W, 69-62), La Salle (away Nov. 28), Saint Joseph's (Dec. 22), Pennsylvania and Temple. Last season, the Hens played just one of the Big 5, defeating La Salle 54-46 at home on Dec. 13.

All-time, Delaware is 32-44 against the Big 5, and holds winning series over Pennsylvania (9-6) and Temple (10-9), while breaking even with Villanova (3-3) following the win on Nov. 16.

## Time Change - La Salle

Please note that the time for the game at La Salle on Nov. 28 has changed to 2 p.m.

## UD's Last Time Out

NEWARK, Del. Junior center Sarah Acker notched a double-double in her home debut with 13 points and 12 rebounds and the University of Delaware dominated the glass and remained unbeaten with a 68-52 non-league women's basketball victory over St. Francis (Pa.) Tuesday night at the Bob Carpenter Center.

The Blue Hens, who enjoyed a 56-37 advantage on the boards and blocked 10 shots on the night, improved to 4-0 for the first time since the 1992-93 team won its first five games as All-American sophomore Elena Delle Donne overcame a slow start to finish with 26 points and 12 rebounds and junior forward Danielle Parker matched a career-high with 12 boards. Delle Donne, who entered the game averaging 37.0 points per game, was held to just six points on 3 of 11 shooting in the first half but finished with her 14th career double-double.

St. Francis (1-4), which converted just 19 of 67 shots from the field on the night, never held

the lead the entire night despite pulling to within two points with just under 13 minutes remaining. Samantha Leach led the Red Flash with 12 points while Allison Daly added 11 points and seven rebounds and Shené Fleming contributed eight rebounds. The Red Flash dropped to 0-3 vs. Colonial Athletic Association opponents this season.

Acker, a 6-1 left-hander and a first-year transfer from Saint Joseph's, was playing just her second game for the Blue Hens after being declared eligible last week. She had nine rebounds in her debut Saturday in a 79-61 Delaware win over Yale, but she was even better on Tuesday night. She came off the bench to knock down 4 of 8 shots from the field and pull 12 rebounds, including four on the offensive glass.

Sophomore guard Lauren Carra also contributed nine points for the Hens while Vanessa Kabongo added seven points. The Hens overcame 37.7 percent shooting from the field (23 of 61) and 17 turnovers by knocking down 19 of 23 free throws and owning the glass. Delaware, which collected 16 offensive boards, posted its highest rebound total since pulling 57 against Hofstra in a 70-54 win on Jan. 23, 2005.

Delaware led the entire first half but never by more than seven points, posting their biggest lead at 23-16 with 7:27 left on an Acker shot in the lane. But St. Francis rallied as the Red Flash converted three three-pointers over the next three minutes, including two by Daly, to narrow the deficit to 26-25 with 3:46 left. The Hens gained a little breathing room, getting back-to-back layups from Delle Donne and Jocelyn Bailey to take a 30-26 lead at the break.

## Preseason Plaudits

Now in her second season with the Blue Hens, sophomore guard/forward Elena Delle Donne has landed on major Preseason Watch Lists.

Most recently, Delle Donne was one of 50 players named to the Naismith Trophy Preseason Watch List. On Nov. 3, she earned votes for the Associated Press Preseason All-America Team. Prior to the first day of practice it was announced that she was on the Wooden Award Watch List on Oct. 5. She was making national waves even before the school year started, as it was announced on Aug. 4 that she was on Wade Player of the Year Watch List.

In conference, Delle Donne was selected as a Co-Player of the Year with James Madison's Dawn Evans. Both players were named to the CAA Preseason All-Conference team as well.



## The Last Time...

### UD Went To Overtime...

3/12/10 vs. Drexel (at JMU/W, 67-61 OT)

### UD Went To Double Overtime...

1/17/10 vs. Drexel (L, 70-67 2OT)

### UD Scored 100 Points...

2/27/81 vs. Temple (W 101-96 OT)

### UD Allowed 100 Points...

2/13/97 at Maine (L 54-102)

### UD Was Held Under 40 Points...

3/12/09 vs. Towson (L 37-40)

### UD Held An Opponent Under 40 Points...

2/7/08 vs. VCU (W 42-37)

### UD Made Five 3-PT FGs...

11/12/10 vs. UMBC (5-11)

### An Opponent Made Five 3-PT FGs...

11/23/10 vs. St. Francis (Pa.) (8-21)

### A Blue Hen Scored 20 Points...

11/23/10 vs. St. Francis (Pa.), Elena Delle Donne (26)

### An Opponent Scored 20 Points...

11/16/10 vs. Villanova, Lindsay Kimmel (20)

### A Blue Hen Scored 25 Points...

11/20/10 vs. Yale, Elena Delle Donne (41)

### An Opponent Scored 25 Points...

3/12/10 vs. Drexel (at JMU), Gabriela Marginean (27)

### A Blue Hen Scored 30 Points...

11/20/10 vs. Yale, Elena Delle Donne (41)

### An Opponent Scored 30 Points...

2/18/10 at JMU, Dawn Evans (38)

### A Blue Hen Grabbed 10 Rebounds...

11/23/10 vs. St. Francis, Sarah Acker, Elena Delle Donne, Danielle Parker (12)

### An Opponent Grabbed 10 Rebounds...

3/18/10 vs. Richmond, Crystal Goring (13)

### A Blue Hen Grabbed 15 Rebounds...

2/8/10 vs. GMU, Elena Delle Donne (15)

### An Opponent Grabbed 15 Rebounds...

2/28/10 at Towson, Katrina Wheeler (18)

### A Blue Hen Had 10 Assists...

11/29/99 at Lafayette, Christine Koren (10)

### An Opponent Had 10 Assists...

1/24/10 at Hofstra, Candice Bellocchio (10)

### A Blue Hen Had Five Blocks...

3/3/10 vs. Hofstra, Elena Delle Donne (7)

### An Opponent Had Five Blocks...

3/3/10 vs. Hofstra, Jess Fuller (5)

### A Blue Hen Had A Double-Double...

11/23/10 vs. St. Francis (Pa.), Elena Delle Donne (26 pts./12 rbs.), Sarah Acker (13 pts./12 rbs.)

### An Opponent Had A Double-Double...

3/13/10 vs. ODU (at JMU), Tia Lewis (10 pts/11 rbs)

## Record Breaking Season

At the end of the 2009-10 season, sophomore Elena Delle Donne broke 18 school records, including the freshman and school season while also resetting the CAA mark, racking up 774 points. She averaged a conference and school record 26.7 points per game. James Madison foe Dawn Evans holds the second-place record, also set last season, but scored 2.1 points per game less than Delle Donne on average.

The two hot handed players combined for 92 points on Feb. 18, 2010. Delle Donne shattered the single game scoring record of 51, set by Keri Chaconas on Feb. 17, 1995.

Delle Donne's mark in that game was the highest point total in a single game last season, men's or women's. As she set the mark in the JMU Convocation Center, she surpassed Navy's David Robinson in the single game record of 50, which is also the CAA men's single game record.

## Delaware Did You Knows?

- The average height of a Delaware women's basketball player is 6-foot?
- Delaware returns nine point scorers who combined for 1,503 points in 2009-10?
- The Hens return 72.6 percent of last season's offense production?
- Delaware outscores its opponents 112-77 in the first half?
- The Blue Hens have an overall record of 32-21 on the current floor of the BCC, which was first played used on Dec. 22, 2006 in a 66-42 win over Fordham?
- Delaware is 21-10 all-time versus current Division I schools from the state of Connecticut?
- The Blue Hens have won seven season openers in a row and are now 14-1 under coach Martin in home openers?

## Record By Starting Five



Bailey, Carra, Delle Donne, Kabongo, Riddick ..... 1-0  
Bailey, Carra, Delle Donne, Kabongo, Parker ..... 3-0

## Double-Double Double Dip

In the Blue Hens 69-62 victory over Villanova on Nov. 16, Danielle Parker and Elena Delle Donne each tallied a double-double, with Parker tallying 11 points and 11 assists and Delle Donne posting 34 points and grabbing 12 boards.

It is the second time the pair of sophomores have recorded double-doubles in the same game, after Delle Donne had 27 points and 10 rebounds and Parker scored 10 points with 11 boards in Delaware's 59-41.

## 30+ Point Games...

Following the win over Yale, Elena Delle Donne has now recorded 11 games with 30 or more points, including three already this season and four of her last five games have gone 30-plus.

Her 41 points against Yale on Saturday night ranks second-most for a single game all-time at Delaware, and ties her for fifth in the CAA record books.

The effort against Yale gave Delle Donne back-to-back-to-back 30-plus point games, the first of its kind in program history.

She surpassed the bench mark eight times last season; 35 at Princeton, 39 vs. Buffalo, 35 at Hofstra, 31 at Drexel, 35 vs. Georgia State, 54 vs. James Madison (CAA and school record), 30 vs. Drexel (CAA Tournament) and 30 vs. Old Dominion (CAA Tournament). This season, she has 36 vs. UMBC and 34 vs. Villanova.

Delle Donne is one of just two players in the program's history to record back-to-back 30-plus point games. Shanda Piggott accomplished the feat on Jan. 26 1997, burying 32 in an 81-70 win over Northeastern, followed by a 33 point effort in a double-overtime win at Drexel. Delle Donne is the only player to have recorded multiple back-to-back 30-plus games.

## Record-Breaking Numbers

A Feb. 4 crowd of 2,042 in attendance at the Blue Hens 84-55 routing of William & Mary, broke the all-time women's basketball single-season attendance mark as they pushed the total to 23,584. This surpassed the previous

record of 22,498 set during UD's 13-game 1996-97 campaign. The Hens finished their 13-game regular season with an overall attendance of 37,094, averaging 2,853 fans per game. Delaware destroyed the record, seating 14,596 more than the record that stood for over 12 seasons.

## Pack the House

The attendance record for a Delaware women's basketball single game is 4,772 set on Feb. 11, 2005 against Old Dominion. The Hens were victorious over the Lady Monarchs, 62-58.

Att.	Date	Opponent	Result
4,772	2/11/05	vs. ODU.....	W 62-58
3,606	2/14/10	vs. Georgia State.....	W 68-65
3,142	2/25/10	vs. Northeastern.....	W 60-49
3,137	1/17/10	vs. Drexel.....	L 67-70 2OT
3,040	12/11/09	vs. Navy.....	W 67-50
3,014	2/19/06	vs. ODU.....	L 57-60
3,005	2/22/07	vs. #22 JMU.....	W 77-67
2,938	12/30/09	vs. UMass.....	W 57-55
2,901	1/3/10	vs. ODU.....	L 59-60
2,810	3/10/07	vs. JMU.....	L 56-67
2,805	1/28/10	vs. Towson.....	W 72-49
2,642	1/11/02	vs. #25 ODU.....	L 55-82

## Making Mid-Major Waves

After jumping out to a 2-0 start, Delaware has climbed the Mid-Major Poll, now ranked No. 15 in the Colleg Insider.com poll, climbing nine spots from No. 24 in the Preseason Poll. The Hens picked up 248 points following the victory over UMBC.

Delaware is joined in the rankings by fellow CAA squads Old Dominion (No. 5) with 627 points and James Madison (No. 9) with 447.

Two other Delaware opponents were named on the poll, including No. 4 Princeton with 641 points and Navy received two votes. The Hens host the Tigers Dec. 1 at 7 p.m. and travel to Annapolis to face the Midshipmen on Dec. 5 at 2 p.m.

In addition to the CAA, the Mid-Major Poll is comprised of teams from the America East, Atlantic Sun, Big Sky, Big South, Big West, Great West, Horizon, Independents, Ivy, Metro Atlantic, Mid-American, Mid-Eastern, Missouri Valley, Northeast, Ohio Valley, Patriot, Southern, Southland, Southwestern, Summit, Sun Belt, West Coast.

## Twenty-Win Milestone

Twenty or more wins is the key mark for Delaware. The last seven times the Hens have surpassed 20 wins, they have advanced to either the NCAA Tournament or earned a berth in WNIT. Last season, Delaware hit the benchmark, going 21-12 overall and 11-7 in the Colonial Athletic Association, advancing to the semifinals of the conference tournament.



## 1,000th Program Game Played in 39th Season

Delaware played its 1,000th program game on Feb. 14, 2010. Its inception under the direction of head coach Mary Ann Campbell (Hitchens) took place in 1972, in which the Hens recorded a dominating 8-4 record. Thirty-eight seasons later, the Blue Hens played their 1,000th game against Georgia State University in the Bob Carpenter Center. This milestone also doubled as the Pink Zone game. UD's all-time record is 594-415 (.589) through 2009-10.

**1st Game:** Feb. 5, 1972  
Delaware vs. Glassboro State .....W 58-56

**50th Game:** Feb. 15, 1975  
Delaware vs. Towson State .....W 62-57

**100th Game:** Jan. 26, 1978  
Delaware at Towson State .....W 75-65

**250th Game:** March 3, 1984  
Delaware vs. Towson State ..... L 58-61  
(ECC Tournament at Rider)

**500th Game:** Feb. 6, 1993  
Delaware at Drexel.....W 68-62

**750th Game:** Jan. 29, 2002  
Delaware vs. Pennsylvania.....W 79-58

**1,000th Game:** Feb. 14, 2010  
Delaware vs. Georgia State .....W 68-65

## Martin Secures 250th Win

University of Delaware women's basketball head coach Tina Martin earned her 250th career victory on Jan. 28 as the Blue Hens placed five scorers in doubles figures and cruised to a 72-49 Colonial Athletic Association women's basketball triumph over Towson at the Bob Carpenter Center.

Martin, who with the win, improved to 250-155 (is now 258-161) in her 15th season at Delaware to become just the third active coach in the CAA to reach that win plateau.

Martin's first career victory as a head coach came on Nov. 22, 1996 against Delaware State. She went on to defeat Vermont on Feb. 26, 2000 for her 50th win, before notching her 100th triumph on March 1, 2002 against Hofstra, her 150th victory over VCU on Jan. 2, 2005 and her 200th on Jan. 4, 2007 again over Hofstra.

Martin tipped-off her head coaching career at Delaware in the 1996-97 season after serving as an assistant coach at Seton Hall for nine seasons.

## Home, Sweet Home

The Bob Carpenter Center has been kind to the Blue Hens since women's basketball played its first game, defeating Temple on Dec. 1, 1992. Since that day, the Hens have built their overall record to 162-70 (.698) in the Bob, including 135-48 (.737) under Coach Martin.

In conference and league tournaments, Delaware is 109-48 (.694) and holds a 93-36 (.702) record under Martin since she started coaching the Hens in 1996.

## Leon Signs NLI to Join UD

The University of Delaware women's basketball team will get even taller next season, as head coach Tina Martin announced on Friday that Stephanie Leon, a 6-4 post player from Northport High School, signed her National Letter of Intent to play for the Blue Hens.

Leon, who is rated the No. 31 best post player in the nation, according to HoopGurlz.com, will bring all-star talent to the Blue Hens frontcourt. Leon selected Delaware over several other high-caliber schools, including Colonial Athletic Association rival James Madison, as well as Richmond, Rhode Island, Massachusetts and Marist.

After leading her team to a 17-3 overall record and averaging 14 points and 11 rebounds a game, Leon was named first-team League II. She was instrumental in leading her squad to the third round of the New York State Tournament, and was named All-Suffolk Country for her efforts.

Outside of high school ball, Leon has also been a member of the notable AAU teams Exodus Elite and Basketball Results. An honor student, Leon carries a 3.96 grade point average.

## Miller Sidelined Following Back Surgery

Kayla Miller, a junior member of the University of Delaware women's basketball team, will be sidelined indefinitely following back surgery to repair a herniated disk.

Miller (at right) underwent surgery on Friday, Oct. 29 at Christiana Hospital in Newark, Del. to repair the disk and is expected to be out indefinitely. She could miss the entire 2010-11 season.

After sitting out the first nine games of the season due to NCAA transfer rules following her departure from George Washington, Miller tallied a team-high 74 assists, averaging 3.1 across her 24 games played. The 5-8 guard also tallied 27 steals and snagged 43 rebounds. During her time last season, she averaged 30.4 minutes a game, ranking her third on the team.

Miller, an exercise physiology major at the University, earned second-team All-CAA Academic Honors. She was Delaware's nominee for the conference's Dean Ehlers

Leadership award, serving as a captain both this season and last season. Miller was also presented the Joyce Perry Memorial Coaches' Award at the team's annual banquet.

Last season, Miller, a native of nearby Wilmington, Del. (Ursuline Academy), and the Blue Hens reached the semifinals of the CAA Tournament, falling to eventual runner up Old Dominion. Delaware (21-12) earned a bid to the Women's National Invitational Tournament (WNIT) where it hosted the University of Richmond before falling 67-49.

## It's Not Just How You Start...

Delaware always seems to get off to a hot start, compiling a home-opener record of 28-11 in the programs 39 year history. The Hens win at a .719 percent clip in their first games at Newark.

Under Coach Martin, Delaware has a very impressive home opening record of 13-1 since her first season in 1996-97. The lone blemish came in 2003-04 to Richmond, a team that reached the semifinals of the WNIT that season.

The Hens are currently riding a six-game home opener winning streak, dating back to that same season.

## ...But Also How You Finish.

Delaware has won 30 of the program's 39 regular season finales, taking the wins .769 percent of the time, including last season's 59-41 rout of Hofstra in front of the home crowd on March 3.

## Tracking the Career Scoring Leaders

Two Blue Hens are currently climbing the career points record list. Elena Delle Donne is ranked 29th with 844 points, needing just 156 points to reach the 1,000 point plateau.

Junior Vanessa Kabongo is also making her way up the charts and is currently tied for 43rd with 552 points.

### Charting Delle Donne's Progress:

Rnk.	Name .....	Years Played	Pts.
20)	Molly Larkin .....	1989-93	1,017
21)	Julie Sailer.....	2001-05	1,001
22)	Cynthia Phipps .....	1980-84	976
23)	Tesia Harris .....	2007-10	942
<b>24)</b>	<b>Elena Delle Donne.....</b>	<b>2009-</b>	<b>885</b>

### Charting Kabongo's Progress:

Rnk.	Name .....	Years Played	Pts.
40)	Bridget McCarthy .....	1987-91	626
41)	Ann Igo .....	1971-74	592
42)	Kyle DeHaven.....	2006-08	579
<b>43)</b>	<b>Vanessa Kabongo.....</b>	<b>2007-</b>	<b>552</b>
43)	Jackie Porac .....	1995-98	552



## Blue Hens By The Numbers

	09-10	10-11
Home.....	11-3	3-0
Away.....	7-8	1-0
Neutral.....	3-1	0-0
vs. CAA at Home.....	7-2	0-0
vs. CAA on Road.....	4-5	0-0
in Overtime.....	1-3	0-0
Scoring 70+ points.....	7-1	1-0
Scoring -70 points.....	14-11	3-0
Allowing 70+ points.....	1-5	0-0
Allowing -70 points.....	20-7	4-0
Leading at Halftime.....	17-3	4-0
Trailing at Halftime.....	3-9	0-0
Tied at Halftime.....	1-0	0-0
Shoot 50%+ FG.....	3-1	1-0
Shoot -50% FG.....	17-12	3-0
Opponent shoots 50%+.....	0-1	0-0
Opponent shoots -50%.....	21-11	4-0
Shoot 70%+ FT.....	9-6	4-0
Shoot -70% FT.....	13-5	0-0
Opponent shoots 70%+ FT.....	9-10	2-0
Opponent shoots -70% FT.....	12-2	2-0
More or = turnovers.....	10-6	4-0
Less turnovers.....	11-6	0-0
Outrebounded or = Opp.....	18-3	4-0
Outrebounded by Opp.....	3-9	0-0
More or = Assists.....	6-2	0-0
Less Assists.....	15-10	4-0
At night.....	11-7	4-0
During the day.....	10-5	0-0
In November.....	2-2	4-0
In December.....	6-1	0-0
In January.....	5-4	0-0
In February.....	5-3	0-0
In March.....	3-2	0-0
Sunday.....	5-4	0-0
Monday.....	1-0	0-0
Tuesday.....	3-0	2-0
Wednesday.....	2-1	0-0
Thursday.....	6-4	0-0
Friday.....	3-0	1-0
Saturday.....	1-3	0-0
vs. Atlantic 10.....	2-1	0-0
vs. America East.....	2-0	1-0
vs. Atlantic Coast.....	0-0	0-0
vs. BIG EAST.....	0-0	1-0
vs. Big Ten.....	0-0	0-0
vs. CAA.....	13-8	0-0
vs. Conference USA.....	1-0	0-0
vs. Ivy League.....	0-2	1-0
vs. MEAC.....	0-0	0-0
vs. Mid-American.....	1-0	0-0
vs. Mountain West.....	0-1	0-0
vs. Northeast.....	1-0	1-0
vs. Ohio Valley.....	0-0	0-0
vs. Patriot League.....	1-0	0-0
vs. Southeastern.....	0-0	0-0
vs. Southwestern.....	0-0	0-0
vs. West Coast Conference.....	0-0	0-0

### Game #1

UMBC 44  
Delaware 59

November 12, 2010  
Bob Carpenter Center

Delaware	Min	FG-A	FT-A	R	A	PF	PTS
Delle Donne.....	39	13-29	6-6	7	1	0	36
Riddick.....	26	1-2	0-3	8	0	1	2
Bailey.....	25	1-5	1-2	7	0	4	3
Kabongo.....	22	0-3	1-2	4	0	1	1
Carra.....	33	1-3	2-2	6	4	2	5
May.....	18	0-2	3-4	7	2	3	3
McLean.....	8	0-2	2-2	2	0	2	2
Parker.....	25	2-5	3-4	3	0	1	7
Buchanan.....	4	0-1	0-0	3	0	1	0
<b>Totals</b>	<b>200</b>	<b>18-52</b>	<b>18-25</b>	<b>48</b>	<b>7</b>	<b>15</b>	<b>59</b>

UMBC	Min	FG-A	FT-A	R	A	PF	PTS
Colabella.....	26	2-5	0-0	9	0	3	9
Obajolu.....	26	2-5	4-4	5	1	4	8
Kurowski.....	28	2-11	1-1	3	4	4	6
Brokans.....	21	0-1	0-0	0	1	2	0
Coles.....	22	0-5	1-2	5	0	2	1
Gerald.....	20	4-15	0-0	2	0	1	11
Barker.....	7	0-0	0-0	0	0	1	0
Brown.....	35	5-13	0-0	4	2	4	12
Lewis.....	15	1-2	0-0	2	0	2	2
<b>Totals</b>	<b>200</b>	<b>16-57</b>	<b>6-7</b>	<b>31</b>	<b>8</b>	<b>23</b>	<b>44</b>

UMBC.....	18	26	44
Delaware.....	29	30	59

**Field Goal Pct. by Half:** UD 9-28 (32.1)/9-24 (37.5) UMBC: 7-30 (23.3)/9-27 (33.3); **Three-Point Field Goals:** UD 5-11 (Delle Donne 4-8, Carra 1-1, McLean 0-2); UMBC 6-19 (Kurowski 1-6, Brokans 0-1, Gerald 3-7, Brown 2-5); **Blocks:** UD 5 (Delle Donne 2, Riddick 1, Bailey 1, May 1) UMBC 3 (Obajolu 2, Lewis 1) **Steals:** UD 8 (May 3, Riddick 2, Delle Donne 1, Kabongo 1, Carra 1) UMBC 5 (Coles 2, Obajolu 1, Gerald 1, Brown 1); **Turnovers:** UD 23 (Delle Donne 5, Carra 5, Kabongo 4, May 3, Riddick 2, Bailey 2, McLean 1, Parker 1) UMBC 18 (Brokans 4, Kurowski 4, Gerald 3, Brown 2, Colabella 2, Coles 2, Barker 1) **Officials:** Lewis, Harding Jr., Fisher; **Attendance:** 2,079

**NEWARK, Del.** - Thanks to Elene Delle Donne, the University of Delaware women's basketball team started the season off with a bang Friday night... The sophomore All-American, who was named to virtually every pre-season national player of the year watch list, once against proved her value as one of the nation's top players as she poured in 36 points and led the Blue Hens to a season-opening 59-44 non-league women's basketball victory over UMBC Friday night before 2,079 fans at the Bob Carpenter Center... The 6-5 Delle Donne scored 19 points in the opening half to help the Hens to a 29-18 lead at the break and keyed the Delaware attack in the second half as Delaware held off a second half surge by the Retrievers (0-1). The 36 points was the fourth highest single game total in school history and most ever by a Delaware player on opening night... The Hens, coming off a 21-12 record a year ago when they advanced to the Women's National Invitation Tournament, won their seventh straight season opener and seventh straight home opener but had to grind it out. The Hens, shot just 34.6 percent from the field (18 of 52) and committed 23 turnovers but they controlled the board by a wide 48-31 margin as five different players pulled down six or more caroms...UMBC turned the ball over 18 times and shot just 28.1 percent from the field, going just 16 of 57 from the field and 6 of 19 from beyond the three-point arc. The Retrievers made just 7 of 30 first half shots, scoring just four points in the first 10 minutes as they fell behind 13-4 midway through the half.

### Game #2

Villanova 62  
Delaware 69

November 16, 2010  
Bob Carpenter Center

Delaware	Min	FG-A	FT-A	R	A	PF	PTS
Kabongo.....	21	2-5	0-0	0	2	3	5
Delle Donne.....	40	11-19	10-11	12	3	0	34
Parker.....	32	4-7	3-4	11	0	2	11
Bailey.....	38	2-5	2-2	5	0	3	6
Carra.....	35	3-7	0-1	2	3	4	7
May.....	19	2-6	0-0	5	2	1	4
McLean.....	5	0-1	0-0	1	1	1	0
Buchanan.....	8	1-1	0-0	0	0	2	2
Riddick.....	2	0-1	0-0	1	0	0	0
<b>Totals</b>	<b>200</b>	<b>25-52</b>	<b>15-18</b>	<b>38</b>	<b>11</b>	<b>16</b>	<b>69</b>

Villanova	Min	FG-A	FT-A	R	A	PF	PTS
Kimmel.....	31	6-14	2-2	3	2	2	20
Swiezynski.....	20	0-2	2-2	1	3	4	2
Sweeney.....	15	3-6	2-3	1	0	1	8
Roberts.....	25	4-9	6-6	3	1	1	16
Carey.....	22	0-1	0-0	4	2	1	0
Jones.....	12	0-3	0-0	1	0	0	0
Kane.....	19	0-1	2-2	1	4	4	2
Pearson.....	29	2-7	0-0	2	2	5	5
Shuey.....	7	0-2	0-0	1	0	0	0
Scanlon.....	20	4-7	0-0	4	0	0	9
<b>Totals</b>	<b>200</b>	<b>19-52</b>	<b>14-15</b>	<b>24</b>	<b>14</b>	<b>15</b>	<b>62</b>

Villanova.....	25	37	62
Delaware.....	34	35	69

**Field Goal Pct. by Half:** UD 14-31(45.2)/11-21 (52.4) VU: 8-24 (33.3)/11-28 (39.3); **Three-Point Field Goals:** UD 4-9 (Delle Donne 2-3, Kabongo 1-1, Carra 1-4, McLean 0-1); VU 10-30 (Kimmel 6-13, Roberts 2-2, Scanlon 1-4, Pearson 1-6, Swiezynski 0-1, Sweeney 0-1, Carey 0-1, Suhey 0-2); **Blocks:** UD 3 (Delle Donne 1, Parker 1, Buchanan 1); VU 0 **Steals:** UD 2 (Bailey 1, May 1) VU 2 (Pearson 1, Roberts 1); **Turnovers:** UD 11 (Carra 4, Buchanan 3, Bailey 2, Parker 1, Riddick 1) VU 11 (Kane 4, Kimmel 2, Sweeney 2, Carey 1, Roberts 1, Swiezynski 1) **Officials:** Enterline, Jones, Smith; **Attendance:** 2,125

**NEWARK, Del.** - Sophomore All-American Elena Delle Donne put in another big effort, scoring 34 points and pulling 12 rebounds, and the Blue Hens got a big boost from sophomore forward Danielle Parker who scored 11 points and pulled down 11 rebounds as the University of Delaware held off Villanova for a 69-62 non-league women's basketball victory Tuesday night at the Bob Carpenter Center... The Hens (2-0), winners of their first two games for the second time in three years, led by as much as 16 early in the second half but had to hold off a barrage of three-pointers by Villanova (1-1) to survive with the seven-point win. Delaware has now knocked off the Big East Wildcats three straight times... Delle Donne, a pre-season Player of the Year candidate, enjoyed her second straight big effort after knocking down 36 points in Delaware's season-opening 59-44 win over UMBC Friday. This time, though, she got a bigger contribution from her teammates. She connected on 11 of 19 shot from the field and 10 of 11 from the foul line and also knocked down a pair of three-pointers to post her fourth 30-point game in her last four outings and surpassed that 30-point mark for the 10th time in her two-year career... Parker's 11 rebounds - one shy of her career-high set last year - were part of her second career double-double and helped the Blue Hens hold a commanding 38-24 advantage on the boards as they held of a hot-shooting Villanova squad that converted 10 of 30 three-pointers, including 7 of 16 shooting in the second half.

**Game #3**

**Delaware 79**  
**Yale 61**

**November 20, 2010**  
**John J. Lee Amphitheater**

Delaware	Min	FG-A	FT-A	R	A	PF	PTS
Delle Donne.....	37	15-25	8-9	5	2	0	41
Parker.....	32	4-7	3-4	11	0	1	11
Bailey.....	23	3-4	2-2	7	0	4	8
Kabongo.....	21	0-3	0-0	2	0	3	0
Carra.....	32	2-3	2-2	1	5	4	6
May.....	16	3-4	3-5	3	0	0	9
McLean.....	12	0-2	0-0	2	0	2	0
Acker.....	27	2-4	0-1	9	0	1	4
<b>Totals.....</b>	<b>200</b>	<b>29-52</b>	<b>18-23</b>	<b>40</b>	<b>7</b>	<b>15</b>	<b>79</b>
		.558	.783	(0)			

Yale	Min	FG-A	FT-A	R	A	PF	PTS
Gobrecht.....	30	5-9	1-2	5	3	4	12
Cashen.....	17	0-0	0-0	0	2	5	0
Greenfield.....	27	5-10	1-1	0	3	1	12
Messimer.....	24	5-9	2-2	0	0	0	14
Vasquez.....	29	1-11	1-2	0	1	1	4
Keita.....	7	0-1	0-0	1	1	1	0
Lehner.....	8	0-3	0-0	0	1	1	0
Seelaus.....	14	1-3	0-0	2	0	0	2
von Kaeppler.....	15	5-7	1-2	1	0	2	14
Tyson.....	4	0-0	0-0	0	0	0	0
West.....	25	1-2	0-0	4	3	2	3
<b>Totals.....</b>	<b>200</b>	<b>23-55</b>	<b>6-9</b>	<b>20</b>	<b>14</b>	<b>17</b>	<b>61</b>
		.418	.667	(7)			

**Delaware.....49 30 79**  
**Yale.....34 27 61**

**Field Goal Pct. by Half:** UD 20-29 (69.0)/9-23 (39.1) YU: 14-29 (48.3)/9-26 (34.6); **Three-Point Field Goals:** UD 3-5 (Delle Donne 3-4, McLean 0-1); YU 9-26 (von Kaeppler 3-5, Messimer 2-5, West 1-2, Gobrecht 1-3, Greenfield 1-3, Vasquez 1-6, Lehner 0-1, Seelaus 0-1); **Blocks:** UD 4 (Acker 2, Delle Donne 1, May 1); YU 1 (Seelaus 1) **Steals:** UD 7 (Acker 4, Parker 2, May 1) YU 11 (Messimer 4, Greenfield 2, Vasquez 2, Seelaus 2, Lehner 1); **Turnovers:** UD 20 (Delle Donne 6, Carra 4, Acker 3, Bailey 2, Kabongo 2, May 1, TEAM 1) YU 19 (West 5, Gobrecht 2, Messimer 2, Vasquez 2, Keita 2, Lehner 2, von Kaeppler 1, Tyson 1, TEAM 1) **Officials:** Narrose, Savo, Kuzmeski; **Attendance:** 524

**NEW HAVEN, Conn.** - Behind a team shooting percentage of 55.8, the University of Delaware women's basketball team walked out of John J. Lee Amphitheater with its third-consecutive victory, helped by sophomore All-American Elena Delle Donne scoring 41 points and Danielle Parker posting her second-consecutive double-double in the Hens 79-61 victory Saturday night...Delle Donne's 41 points rank second for a single game in Delaware history, just behind her own mark of 54 points against James Madison on Feb. 18, 2010 and tie her for fifth in the Colonial Athletic Association records. She is also the first player in program has to post 30-plus points in three consecutive games... Parker's double-double of 11 points and 11 rebounds is the second-consecutive game in which she has posted the same numbers, doing so in a 69-62 win over Villanova Tuesday night... The Blue Hen victory was aided by a season-high 49 points in the first half, holding the Bulldogs (1-2) 34 points. Delaware shot a blistering 69.0 percent from the field in the half, going 20-for-29. The Hens went a perfect 2-for-2 from beyond the arc, while also hitting seven of their nine free throw attempts...Yale held a narrow 18-17 advantage with 11 minutes left in the first half, but Delaware pulled away and rattled off a 19-0 run. Delle Donne capped the first half with 24 points, while both Parker and Jocelyn Bailey had eight points, who also led in rebounds at the break with five.

**Game #4**

**St. Francis (Pa.) 52**  
**Delaware 68**

**November 23, 2010**  
**Bob Carpenter Center**

Delaware	Min	FG-A	FT-A	R	A	PF	PTS
Delle Donne.....	39	9-22	6-6	12	3	2	26
Parker.....	30	1-7	2-2	12	0	1	4
Bailey.....	15	2-5	0-0	5	0	4	4
Kabongo.....	21	1-4	5-6	1	1	1	7
Carra.....	30	4-10	0-1	3	1	1	9
May.....	22	2-4	1-2	5	2	2	5
McLean.....	10	0-1	0-0	2	0	0	0
Buchanan.....	4	0-0	0-0	2	0	0	0
Riddick.....	1	0-0	0-0	1	0	0	0
Acker.....	28	4-8	5-6	12	0	0	13
<b>Totals.....</b>	<b>200</b>	<b>23-61</b>	<b>19-23</b>	<b>56</b>	<b>7</b>	<b>11</b>	<b>68</b>
		.377	.826	(1)			

St. Francis	Min	FG-A	FT-A	R	A	PF	PTS
Fleming.....	33	2-5	0-2	8	0	3	4
Smith.....	16	2-4	0-0	2	0	2	4
Leach.....	26	3-13	4-4	3	0	2	12
Lilley.....	34	3-19	2-5	3	2	2	9
Daly.....	33	4-10	0-0	7	2	4	11
Gibbs.....	8	0-0	0-0	0	1	1	0
Thorn.....	20	3-6	0-0	3	3	4	8
Prescott.....	3	0-0	0-0	0	0	0	0
Doogan.....	7	2-3	0-0	1	0	1	4
Williams.....	20	0-7	0-0	6	0	1	0
<b>Totals.....</b>	<b>200</b>	<b>19-67</b>	<b>6-11</b>	<b>37</b>	<b>8</b>	<b>20</b>	<b>52</b>
		.284	.545	(4)			

**St. Francis (Pa.).....26 26 52**  
**Delaware.....30 38 68**

**Field Goal Pct. by Half:** UD 13-37 (35.1)/10-24 (41.7) SFU: 10-32 (31.3)/9-35 (25.7); **Three-Point Field Goals:** UD 3-9 (Delle Donne 2-3, Carra 1-4, Kabongo 0-1, McLean 0-1); SFU 8-21 (Daly 3-6, Thorn 2-4, Leach 2-5, Lilley 1-3, Doogan 0-1, Williams 0-2 Fleming 0-2); **Blocks:** UD 10 (Delle Donne 4, Acker 2, May 2, Carra 1, Bailey 1); SFU 1 (Daly 1) **Steals:** UD 7 (Carra 2, May 2, Delle Donne 1, Kabongo 1, Parker 1) SFU 10 (Daly 4, Fleming 3, Doogan 1, Thorn 1, Leach 1); **Turnovers:** UD 17 (Carra 4, May 3, Delle Donne 2, Bailey 2, Kabongo 2, McLean 2, Acker 1, Riddick 1) SFU 14 (Fleming 3, Thorn 3, Smith 2, Leach 2, Lilley 2, Gibbs 1, Williams 1) **Officials:** Zentz, Behrens, Wright; **Attendance:** 1952

**NEWARK, Del.** - Junior center Sarah Acker notched a double-double in her home debut with 13 points and 12 rebounds and the University of Delaware dominated the glass and remained unbeaten with a 68-52 non-league women's basketball victory over St. Francis (Pa.) Tuesday night at the Bob Carpenter Center... The Blue Hens, who enjoyed a 56-37 advantage on the boards and blocked 10 shots on the night, improved to 4-0 for the first time since the 1992-93 team won its first five games as All-American sophomore Elena Delle Donne overcame a slow start to finish with 26 points and 12 rebounds and junior forward Danielle Parker matched a career-high with 12 boards. Delle Donne, who entered the game averaging 37.0 points per game, was held to just six points on 3 of 11 shooting in the first half but finished with her 14th career double-double.... Acker was playing just her second game for the Blue Hens after being declared eligible last week. She had nine rebounds in her debut Saturday in a 79-61 Delaware win over Yale, but she was even better on Tuesday night. She came off the bench to knock down 4 of 8 shots from the field and pull 12 rebounds, including four on the offensive glass...The Hens overcame 37.7 percent shooting from the field (23 of 61) and 17 turnovers by knocking down 19 of 23 free throws and owning the glass. Delaware, which collected 16 offensive boards, posted its highest rebound total since pulling 57 against Hofstra in a 70-54 win on Jan. 23, 2005.

**Delaware All-Time  
in Pre-season Tournaments (0-1)**

**Pre Season WNIT (0-1)**

2000 Smith Center, Washington, D.C.  
George Washington 78, Delaware 56

**Delaware All-Time  
in Post Season Tournaments  
(6-21)**

**NCAA Tournament (0-2)**

2001 East Regional  
Reynolds Coliseum, Raleigh, N.C.  
(4) N.C. State 76, (13) Delaware 57

2007 Greensboro Regional  
Breslin Center, East Lansing, Mich.  
(5) Michigan State 69, (12) Delaware 58

**WNIT (0-5)**

2002 Smith Center, Washington, D.C.  
George Washington 78, Delaware 71

2003 Alumni Fieldhouse, Philadelphia, Pa.  
Saint Joseph's 65, Delaware 47

2005 Bob Carpenter Center, Newark, Del.  
St. John's 48, Delaware 42

2006 Petersen Events Center, Pittsburgh, Pa.  
Pittsburgh 64, Delaware 57

2010 Bob Carpenter Center, Newark, Del.  
Richmond 67, Delaware 49

**AIAW Tournament  
EIAW Regional (6-15)**

1972 at Towson, Md.  
vs. Lock Haven.....W/56-50  
vs. Monmouth.....L/50-51

1973 at Lock Haven, Pa.  
vs. Federal City.....L/50-61  
vs. Glassboro State.....L/58-86

1974 at New Brunswick, N.J.  
vs. Slippery Rock.....L/48-76  
vs. Lock Haven.....L/51-76

1975 at Glassboro, N.J.  
vs. Maryland.....L/65-76  
vs. Ursinus.....W/56-53  
vs. West Chester.....L/64-84

1976 at Pittsburgh, Pa.  
vs. Lock Haven.....L/64-91  
vs. Rutgers.....W/97-56  
vs. Penn State.....L/56-68

1977 at Philadelphia, Pa.  
vs. Cheyney State.....L/57-70  
vs. West Chester.....W/66-62  
vs. Rutgers.....L/75-78

1978 at West Chester, Pa.  
at West Chester.....L/53-60  
vs. Temple.....W/76-67

1981 at Jersey City, N.J.  
vs. West Chester.....W/51-47

vs. Morgan State.....L/64-87  
vs. Mount St. Mary's....L/55-57 (OT)

**Delaware All-Time  
in Conference Tournaments  
(29-23 All-Time)**

**East Coast Conference (14-6)**

1983 Qtrs. American.....L/63-73

1984 Qtrs. vs. Bucknell.....W/64-37  
Semis vs. Hofstra.....W/74-56  
Final vs. Towson State.....L/58-61

1985 Qtrs. Hofstra.....W/88-67  
Semis Lehigh.....L/61-69

1986 Qtrs. Drexel.....W/75-44  
Semis vs. Lafayette.....W/62-55  
Final vs. Lehigh.....L/59-72

1987 Qtrs. vs. Lehigh.....L/74-82

1988 Qtrs. vs. Lehigh.....W/80-78  
Semis vs. Lafayette.....L/55-65

1989 Qtrs. vs. Rider.....W/73-64  
Semis vs. Bucknell.....W/80-74  
Final vs. Lafayette.....W/51-45

1990 Qtrs. vs. Bucknell.....W/83-66  
Semis vs. Lehigh.....W/69-63  
Final vs. Drexel.....W/67-58

1991 Semis vs. Drexel.....W/53-41  
Final vs. Hofstra.....W/60-52

**America East / North Atlantic  
Conference (7-9)**

1992 Qtrs. Boston University...W/77-75  
Semis at Vermont.....L/66-82

1993 Qtrs. Hartford.....W/73-64  
Semis at Vermont.....L/62-75

1994 Qtrs. Boston University.....L/60-62

1995 Qtrs. at Northeastern.....L/59-65

1996 Qtrs. at Hartford.....L/55-72

1997 Qtrs. Boston University...W/76-65  
Semis at Vermont.....L/40-72

1998 Qtrs. vs. Drexel.....L/66-68  
(All Rounds at Orono, Maine)

1999 Qtrs. at Vermont.....L/64-74  
(All Rounds at Burlington, Vt.)

2000 Qtrs. vs. New HampshireW/77-65  
Semis vs. Maine.....L/66-74  
(All Rounds at Burlington, Vt.)

2001 Qtrs. vs. Boston University...W/67-49  
Semis vs. Hartford.....W/50-47  
Final at Vermont....W/69-66 (OT)  
(All Rounds at Burlington, Vt.)

**Colonial Athletic Association (10-9)**

2002 Qtrs. vs. Drexel.....W/72-63 (OT)  
Semis vs. UNC Wilmington....L/60-65  
(All Rounds at Norfolk, Va.)

2003 Qtrs. vs. Drexel.....W/69-51  
Semis vs. VCU.....W/63-42  
Final at Old Dominion.....L/58-66  
(All Rounds at Norfolk, Va.)

2004 Qtrs. vs. UNC Wilmington....W/65-59  
Semis at Old Dominion....L/62-73  
(All Rounds at Norfolk, Va.)

2005 Qtrs. vs. VCU.....W/71-56  
Semis vs. James Madison....W/62-57  
Final vs. Old Dominion....L/74-78 (OT)  
(All Rounds at Fairfax, Va.)

2006 Qtrs. vs. Northeastern....W/55-45  
Semis vs. James Madison..L/59-61  
(All Rounds at Fairfax, Va.)

2007 Qtrs. VCU.....W/79-58  
Semis James Madison.....L/56-67  
(All Rounds at Newark, Del.)

2008 1st Rd. UNC Wilmington.....L/56-59  
(All Rounds at Newark, Del.)

2009 1st Rd. vs. Towson.....L/37-40  
(All Rounds at Harrisonburg, Va.)

2010 1st Rd. vs. George Mason...W 58-41  
Qtrs. vs. Drexel.....W 67-61 OT  
Semis vs. Old Dominion.....L 49-50  
(All Rounds at Harrisonburg, Va.)



**2001 NCAA East Regional**  
Reynolds Coliseum • Raleigh, N.C.

Delaware	Min	FG-A	FT-A	R	A	PF	PTS
Leyfert.....	38	3-6	6-8	4	2	2	12
Rible.....	25	4-13	0-1	6	0	4	8
Cole.....	16	1-4	3-4	3	0	3	5
Dellegrotti.....	20	0-1	0-0	1	4	1	0
Johnson.....	36	7-20	6-7	5	0	2	20
Trapp.....	4	1-1	0-0	0	0	0	2
Timmins.....	20	0-3	1-2	2	2	0	1
Davis.....	33	4-7	0-1	5	3	1	9
Howell.....	8	0-0	0-0	1	0	0	0
Totals.....	200	20-55	16-23	28	11	13	57
	.364	.696	(1)				

N.C. State	Min	FG-A	FT-A	R	A	PF	PTS
Gardner.....	22	5-6	0-0	2	3	2	10
Moody.....	20	4-7	1-1	3	0	2	9
Scates.....	24	3-4	3-7	4	1	2	9
Lewis.....	30	3-12	4-4	5	3	2	10
Bates.....	20	2-6	0-0	4	3	3	4
Rivers.....	5	0-0	0-0	0	0	0	0
Hutcherson.....	19	0-0	0-0	4	7	2	0
Olanrewaju.....	16	1-4	0-0	8	2	3	2
Labador.....	4	2-2	0-0	1	0	0	5
Simpson.....	20	6-9	1-2	1	3	0	17
Greene.....	20	5-7	0-0	4	0	4	10
Totals.....	200	31-57	9-14	38	22	20	76
	.544	.643	(2)				

**Delaware..... 27 30 57**  
**North Carolina State..... 36 40 76**

Three-point FG: D - 1-4, .250 (Davis, 1-2, Timmins, 0-1, Dellegrotti, 0-1); NCS - 5-14, .357 (Simpson, 4-6, Labador, 1-1, Lewis, 0-5, Bates, 0-2); Blocks: D - 2 (Cole, Davis), NCS - 3 (Lewis, 2, Gardner); Steals: D - 8 (Timmins, 3, Dellegrotti, Johnson, Leyfert, Cole, Davis), NCS - 5 (Lewis, 2, Gardner, Hutcherson, Simpson); Turnovers: D - 10 (Leyfert, 3, Johnson, 2, Cole, 2, Davis, 2, Trapp), NCS - 13 (Lewis, 5, Scates, 2, Simpson, 2, Bates, Moody, Hutcherson, Greene); Officials: Dock Sisk, Ken Nosek, Laurie Porter; Attendance: 2,623.

**2007 NCAA Greensboro Regional**  
Breslin Center • East Lansing, Mich.

Delaware	Min	FG-A	FT-A	R	A	PF	PTS
DeHaven.....	34	5-15	1-2	4	2	4	12
Koshansky.....	36	2-6	1-2	3	3	1	6
Smith.....	39	7-25	5-8	5	1	4	19
Fisher.....	32	5-15	2-2	11	3	5	13
Ferguson.....	20	0-2	2-2	4	0	2	2
Thomas.....	2	0-0	0-0	0	0	0	0
Irving.....	27	3-6	0-0	10	0	3	6
Mundy.....	10	0-5	0-0	1	0	0	0
Totals.....	200	22-74	11-16	42	9	19	58
	.297	.688	(1)				

Mich. State	Min	FG-A	FT-A	R	A	PF	PTS
Johnson.....	35	4-10	2-2	4	2	2	13
Jefferson.....	26	3-14	4-6	7	2	3	10
Haynes.....	33	2-11	6-8	7	5	1	11
Lucas-Perry.....	32	4-7	1-1	9	3	2	12
DeHaan.....	24	5-8	3-4	9	0	3	13
Davidson.....	13	0-1	0-0	0	1	1	0
Wulff.....	7	0-1	0-0	2	0	0	0
Grantham.....	13	1-4	0-0	4	3	1	2
Bannister.....	13	2-4	1-1	5	0	2	5
Hall.....	4	1-2	1-1	2	0	0	3
Totals.....	200	22-62	18-23	54	16	15	69
	.355	.783	(5)				

**Delaware..... 20 38 58**  
**Michigan State..... 25 44 69**

Three-point FG: D - 3-15, .200 (DeHaven, 1-4, Koshansky, 1-4, Fisher, 1-5, Mundy, 0-2); MSU - 7-17, .412 (Johnson, 3-5, Lucas-Perry, 3-5, Haynes, 1-5, Davidson, 0-1, Wulff, 0-1); Blocks: D - 4 (Ferguson, 3, Fisher), MSU - 11 (DeHaan, 6, Bannister, 3, Davidson, Grantham); Steals: D - 15 (DeHaven, 5, Smith, 4, Koshansky, 3, Irving, 2, Fisher), MSU - 5 (Lucas-Perry, 3, Johnson, Bannister); Turnovers: D - 10 (Fisher, 4, DeHaven, 3, Koshansky, Smith, Thomas), MSU - 19 (Haynes, 5, Lucas-Perry, 5, Johnson, 3, Jefferson, 2, DeHaan, 2, Davidson, Bannister); Officials: Denise Kanitner, Karen J. Pence, Tommy Salerno; Attendance: 6,780.

**2003 Women's NIT**  
Alumni Fieldhouse • Philadelphia, Pa.

Delaware	Min	FG-A	FT-A	R	A	PF	PTS
Malcom.....	39	10-14	1-2	14	0	2	21
Sailer.....	30	4-12	2-2	7	1	3	10
Cole.....	32	0-2	2-2	5	1	5	2
Trapp.....	34	2-16	4-4	4	2	4	8
Timmins.....	31	0-2	0-0	1	3	3	0
Warren.....	15	1-5	1-2	0	3	0	3
Young.....	5	0-0	0-0	1	0	0	0
Howell.....	14	1-3	1-4	4	0	0	3
Totals.....	200	18-54	11-16	39	10	17	47
	.333	.688	(3)				

St. Joseph's	Min	FG-A	FT-A	R	A	PF	PTS
Mohan.....	35	2-4	2-2	8	7	3	7
Krasnoshiok.....	27	4-10	4-4	2	2	3	14
Graff.....	30	4-6	0-0	3	2	4	8
Brady.....	27	2-6	5-8	1	2	1	10
Mehmedic.....	34	4-6	1-1	3	5	2	12
Springman.....	13	1-2	2-2	0	0	2	5
McBryan.....	2	0-0	0-0	0	0	2	0
Pronga.....	1	0-0	0-0	0	0	0	0
Gross.....	18	2-3	1-1	0	0	1	5
McGahan.....	13	2-4	0-0	1	0	1	4
Totals.....	200	21-41	15-18	20	18	19	65
	.512	.833	(2)				

**Delaware..... 21 26 47**  
**Saint Joseph's (Pa.)..... 33 32 65**

Three-pt. FG: UD - 0-8, .000 (Sailer, 0-5, Trapp, 0-2, Timmins, 0-1), SJU - 8-12, .667 (Mehmedic, 3-5, Krasnoshiok, 2-2, Mohan, 1-1, Brady, 1-1, Springman, 1-1, McGahan, 0-2); Blocks: UD - 0; SJU - 4 (Graff, 4); Steals: UD - 9 (Cole, 3, Howell, 3, Malcom, Trapp, Warren), SJU - 14 (Mehmedic, 4, Mohan, 3, Brady, 3, Krasnoshiok, Graff, Springman, Gross); Turnovers: UD - 25 (Trapp, 6, Timmins, 5, Sailer, 5, Malcom, 4, Howell, 2, Young, Warren, Cole), SJU - 20 (Mohan, 5, Brady, 5, Krasnoshiok, 3, Springman, 3, Graff, 2, Mehmedic, Gross); Officials: Janice Aliberti, Marty Novitch, Bob McEntee; Attendance: 1,112.

**2002 Women's NIT**  
Smith Center • Washington, D.C.

Delaware	Min	FG-A	FT-A	R	A	PF	PTS
Rible.....	35	5-13	4-6	7	5	2	14
Davis.....	27	2-7	2-2	5	1	2	8
Cole.....	15	1-3	0-0	4	0	3	2
Trapp.....	29	2-9	0-0	5	0	5	4
Dellegrotti.....	34	6-10	6-10	0	2	4	22
Timmins.....	7	0-0	2-2	0	1	1	2
Sailer.....	22	0-1	5-7	1	1	3	5
Malcom.....	28	2-4	9-10	5	1	1	13
Howell.....	3	0-0	0-0	0	0	0	0
Totals.....	200	18-47	28-37	28	11	21	71
	.383	.757	(1)				

GW	Min	FG-A	FT-A	R	A	PF	PTS
Montanana.....	32	2-6	1-2	6	6	4	5
Darling.....	6	0-0	1-2	0	0	1	1
Oha.....	32	6-14	6-10	4	0	4	18
Joens.....	36	7-14	6-8	3	5	3	23
Dancause.....	18	0-2	0-0	3	2	4	0
Lawrence.....	35	10-11	3-4	7	2	3	23
Witherspoon.....	16	0-0	0-0	0	2	3	0
Outen Barlow.....	25	3-6	2-2	3	3	3	8
Totals.....	200	28-53	19-28	33	20	25	78
	.528	.679	(7)				

**Delaware..... 33 38 71**  
**George Washington..... 38 40 78**

Three-point FG: UD - 7-12, .583 (Dellegrotti, 4-5, Davis, 2-4, Trapp, 1-2, Rible, 0-1), GW - 3-14, .214 (Joens, 3-8, Dancause, 0-1, Montanana, 0-3, Lawrence, 0-1, Outen Barlow, 0-1); Blocks: UD - 1 (Howell), GW - 2 (Oha, 2); Steals: UD - 9 (Dellegrotti, 3, Cole, 2, Trapp, 2, Davis, 2), GW - 14 (Lawrence, 7, Outen Barlow, 3, Dancause, 2, Montanana, 2); Turnovers: UD - 18 (Trapp, 5, Dellegrotti, 5, Timmins, 2, Sailer, 2, Malcom, 2, Howell, Cole), GW - 17 (Joens, 3, Dancause, 3, Montanana, 3, Lawrence, 3, Outen Barlow, 3, Oha, Witherspoon); Officials: John Morningstar, Angela Lewis, Janice Aliberti; Attendance: 611.



### 2005 Women's NIT

March 17, 2005 • Bob Carpenter Center

Delaware	Min	FG-A	FT-A	R	A	PF	PTS
Sailer.....	23	1-6	2-4	4	1	3	4
Malcom.....	40	3-10	4-9	7	1	1	10
Koshansky.....	27	3-4	0-0	1	2	0	9
Smith.....	33	1-7	2-2	5	2	4	4
Blackstone.....	26	1-7	0-2	5	2	1	2
Hayes.....	17	1-5	0-0	4	0	2	3
Young.....	21	4-12	0-0	7	2	5	8
Livingston.....	12	0-1	2-3	1	0	2	2
Irving.....	1	0-1	0-0	0	0	0	0
Totals.....	200	14-53	10-20	38	10	18	42
	.264	.500	(4)				

St. John's	Min	FG-A	FT-A	R	A	PF	PTS
Clark.....	31	8-12	2-5	8	1	3	18
Chambers.....	23	1-2	0-1	6	1	2	2
Wright.....	30	3-11	0-0	7	7	2	8
Peterson.....	20	1-1	0-0	2	0	1	2
Walker.....	24	1-9	0-0	7	1	1	2
Jones.....	6	1-2	0-0	1	0	2	2
Dukes.....	1	0-0	0-0	0	0	0	0
Kurtosi.....	18	1-3	0-0	5	3	4	2
Petersen.....	1	0-0	0-0	0	0	0	0
Thompson.....	14	1-3	0-0	3	0	2	2
Barlow.....	32	2-11	5-6	3	0	2	10
Totals.....	200	19-54	7-12	45	13	19	48
	.352	.583	(3)				

St. John's.....	26	22	48
Delaware.....	22	20	42

Field Goal Pct. by Half: UD - 7-24 (.292)/7-29 (241)  
 SJU - 10-28 (.357)/9-26 (.346) Three-Point Field Goals:  
 UD - 4-11 (.364) (Sailer, 0-2, Koshansky, 3-4, Hayes, 1-5), SJU - 3-16, .188 (Wright, 2-6, Barlow, 1-7, Walker, 0-3); Blocks: UD - 1 (Blackstone), SJU - 7 (Chambers, 3, Clark, 2, Walker, Thompson); Steals: UD - 11 (Koshansky, 3, Smith, 3, Malcom, 2, Hayes, Blackstone, Livingston), SJU - 9 (Wright, 3, Walker, 2, Clark, Peterson, Jones, Kurtosi); Turnovers: UD - 16 (Malcom, 3, Hayes, 3, Young, 3, Blackstone, 2, Hayes, Livingston), SJU - 21 (Wright, 6, Kurtosi, 5, Barlow, 2, Clark, 2, Chambers, 2, Peterson, 2, Thompson, Team); Officials: Tony Lipa, John Orminski, Dianna DePaul; Attendance: 992.

### 2006 Women's NIT

March 18, 2006 • Petersen Events Center

Delaware	Min	FG-A	FT-A	R	A	PF	PTS
Koshansky.....	38	3-10	0-0	6	3	5	6
Czorniewy.....	37	8-16	4-4	3	1	2	21
Fisher.....	38	3-10	0-0	6	3	5	6
Smith.....	39	4-14	7-8	13	3	3	15
Tobin.....	2	0-1	0-0	0	0	0	0
Deng.....	19	2-3	0-0	1	0	3	4
Irving.....	29	1-7	4-4	5	0	4	6
Totals.....	200	20-60	15-16	38	12	18	57
		.333	.938	(4)			

Pittsburgh	Min	FG-A	FT-A	R	A	PF	PTS
Stewart.....	32	2-7	3-4	3	4	3	7
C. Taylor.....	16	0-0	0-0	2	1	3	0
Walker.....	28	4-8	1-5	10	1	4	9
Winn.....	39	5-15	4-4	8	3	2	17
Zellous.....	32	3-10	5-8	4	3	2	11
Hughes.....	1	0-0	0-0	0	0	0	0
Lim.....	2	0-0	0-0	1	0	0	0
Brown.....	20	3-10	0-0	1	0	0	8
D. Taylor.....	25	5-7	2-2	4	0	0	12
Tafen.....	5	0-0	0-0	1	0	0	0
Totals.....	200	22-57	15-23	43	12	14	64
		.386	.652	(9)			

Delaware.....	25	32	57
Pittsburgh.....	30	34	64

Field Goal Pct. by Half: UD - 8-28 (.286)/12-32 (.375)  
 P - 11-29 (.379)/11-28 (.393) Three-Point Field Goals:  
 UD - 2-12 (.167) (Koshansky, 1-7, Czorniewy, 1-4, Fisher, 0-1), P - 5-15, .333 (Winn, 3-9, Brown, 2-6); Blocks:  
 UD - 0, P - 10 (Walker, 4, Zellous, 4, Winn, D. Taylor);  
 Steals: UD - 3 (Koshansky, Smith, Irving), P - 5 (Stewart, Walker, Zellous, Brown, D. Taylor); Turnovers: UD - 11 (Smith, 3, Czorniewy, 3, Fisher, 2, Irving, Deng, Team), P - 13 (Stewart, 4, Winn, 4, Brown, 2, D. Taylor, Walker, Lim);  
 Officials: Michael Shields, Kathy Ridilla, Frank Steratore;  
 Attendance: 1,012.

### 2010 Women's NIT

March 18, 2010 • Bob Carpenter Center

Delaware	Min	FG-A	FT-A	R	A	PF	PTS
Delle Donne.....	33	7-17	7-8	3	1	0	25
May.....	31	4-7	2-3	7	1	3	10
Bailey.....	25	1-5	2-2	4	1	3	4
Carra.....	13	1-4	0-0	0	0	0	3
Parker.....	27	0-5	3-4	5	0	0	3
Miller.....	31	1-7	0-0	1	1	4	2
Riddick.....	20	1-1	0-0	4	0	1	2
Harris.....	18	0-5	0-0	1	1	0	0
Jenkins.....	2	0-1	0-0	0	0	0	0
Totals.....	200	15-52	14-17	27	5	11	49
		.288	.824	(2)			

Richmond	Min	FG-A	FT-A	R	A	PF	PTS
Oliver.....	28	7-13	2-2	4	0	2	18
Shells.....	33	8-12	0-0	7	5	0	18
Bell.....	33	6-8	0-0	2	1	1	15
Bilney.....	26	2-3	0-0	1	2	1	5
Powell.....	29	2-4	0-0	4	1	1	5
Goring.....	28	2-6	0-0	13	3	2	4
Thomas.....	7	1-1	0-0	1	2	3	2
Dannelly.....	8	0-3	0-0	2	0	1	0
Holzer.....	7	0-2	0-0	1	0	3	0
Total.....	200	28-52	2-4	36	14	14	67
		.538	.500	(1)			

Richmond.....	40	27	67
Delaware.....	22	27	49

Field Goal Pct. by Half: UD - 7-27 (.259)/8-25 (.320)  
 UR - 16-27 (.593)/12-25 (.480) Three-Point Field Goals:  
 UD - 5-13 (.385) (Delle Donne 4-7, Carra 1-3, Harris 0-1, Miller 0-2), UR - 9-16, .563 (Bell 3-4, Shells 2-4, Oliver 2-5, Powell 1-1, Bilney 1-2); Blocks: UD - 2 (Parker 2) UR - 3 (Goring 3); Steals: UD - 7 (Parker 2, Bailey 1, Carra 1, Delle Donne 1, Miller 1, Riddick 1), UR - 7 (Powell 2, Bell 1, Bilney 1, Goring 1, Oliver 1); Turnovers: UD - 10 (Harris 3, Bailey 2, May 2, Carra 1, Delle Donne 1, Miller 1), UR - 13 (Shells 5, Goring 3, Oliver 3, Bilney 1, TEAM 1);  
 Officials: Zentz, DePaul, Behrens; Attendance: 1,908



## Colonial Athletic Association Standings as of Nov. 23, 2010

Team	CAA			OVERALL	
	W	L	%	W	L
<b>Delaware</b> .....	0	0	0.00	3	0
UNC Wilmington ....	0	0	0.00	3	0
Drexel.....	0	0	0.00	2	0
Old Dominion.....	0	0	0.00	2	0
Hofstra.....	0	0	0.00	3	1
James Madison.....	0	0	0.00	2	1
VCU.....	0	0	0.00	2	1
Towson.....	0	0	0.00	2	2
Georgia State.....	0	0	0.00	1	1
George Mason.....	0	0	0.00	1	2
Northeastern.....	0	0	0.00	1	3
William & Mary.....	0	0	0.00	0	3

**Tuesday's Games:** Georgia State at Bethune-Cookman 7 p.m.; Old Dominion at NC State 7 p.m.; Saint Joseph's at Drexel 7 p.m.; UMBC at George Mason 7 p.m.; **Wednesday's Game:** UNC Wilmington at Wofford 1 p.m.; **Thursday's Game:** James Madison vs. #21/22 Iowa (Caribbean Challenge) 7:30 p.m.

## CAA Preseason Coaches' Poll Predicted Order of Finish

1) James Madison (2009-10 Champions); 2) Old Dominion; 3) Delaware; 4) Hofstra; 5) VCU; 6) Drexel; 7) William & Mary; 8) UNC Wilmington; 9) Georgia State; 10) George Mason; 11) Towson; 12) Northeastern

## New Home for the CAA Tournament

For the first time in conference history, the women's basketball tournament will be held at a neutral site, rather than at the home court of the top-seeded team. The Show Place Arena, located in Upper Marlboro, Md., will serve as the new home to the CAA Women's Basketball Tournament, Presented by Virginia 529 College Savings Plan. The tournament is slated to take place from March 10-13.

## CAA Dominance

The Blue Hens have tallied a 109-53 record in CAA regular-season play since its first conference game on Dec. 29, 2001 with a 71-66 victory over Hofstra in Newark. Delaware owns a .673 win percentage since the inaugural game eight seasons ago.



## 2010-11 Preseason All-Conference Teams

### First Team

Brittany Blackwell.....UNC Wilmington  
**Elena Delle Donne** .....Delaware  
Dawn Evans .....James Madison  
Shante Evans .....Hofstra  
Taysha Pye .....William & Mary

### Second Team

Shadasia Green..... Old Dominion  
Tarik Hislop .....James Madison  
Courtney Hurt..... VCU  
Tia Lewis ..... Old Dominion  
Jasmine Parker..... Old Dominion

### Honorable Mention

Kamile Nacickatie..... Drexel  
Brittany Pointdexter..... George Mason

## CollegInsider.com Mid-Major Poll

Nov. 23, 2010

Rank	Team (First Place Votes)	Points
1)	Green Bay (29).....	773
2)	<b>Old Dominion (1)</b> .....	673
3)	Arkansas-Little Rock.....	664
4)	Gonzaga (1).....	661
5)	<b>Princeton</b> .....	655
6)	Illinois State.....	598
7)	Florida Gulf Coast.....	578
8)	Middle Tennessee.....	514
9)	Bowling Green.....	492
10)	<b>James Madison</b> .....	486
11)	Marist.....	470
12)	<b>Delaware</b> .....	465
13)	South Dakota State.....	381
14)	Gardner Webb.....	343
15)	Missouri State.....	296
16)	UC Davis.....	248
17)	East Tennessee State.....	205
18)	Creighton.....	179
19)	Toledo.....	169
20)	Saint Mary's.....	154
21)	Liberty.....	141
22)	Appalachian State.....	139
23)	<b>VCU</b> .....	101
24)	Oral Roberts.....	100
25)	Lehigh.....	95

OTHERS RECEIVING VOTES: Western Kentucky 51, Portland 46, Central Michigan 41, **UNC Wilmington 26**, Albany 26, Cleveland State 22, Drexel 21, Cal State Bakersfield 21, Hampton 20, Hartford 20, Lamar 18, Kent State 15, Chattanooga 14, Northern Iowa 13, Butler 12, UT-Pan American 12, Tennessee Tech 11, Arkansas State 10, Cal Poly 10, Samford 10, Southeastern Louisiana 10, Pepperdine 9, American 9, Harvard 9, Fairfield 7, Evansville 7, Morgan State 5, **Navy 5**, High Point 3, Detroit 3, South Alabama 3, Indiana State 2, Nicholls State 2, Eastern Illinois 1, UT-San Antonio 1.

*Bold* Indicates 2010-11 Delaware Opponents

## Associated Press NCAA Divison I Poll

Nov. 22, 2010

Rank	Team (First Place Votes)	Points
1)	Connecticut (39).....	998
2)	Baylor.....	937
3)	Stanford.....	926
4)	Tennessee (W).....	878
5)	Xavier.....	819
6)	Duke (1).....	808
7)	Ohio State.....	759
8)	Texas A&M.....	685
9)	Kentucky.....	682
10)	West Virginia.....	618
11)	Oklahoma.....	591
12)	Georgetown.....	540
13)	UCLA.....	509
14)	North Carolina.....	470
15)	Florida State.....	430
16)	Texas.....	356
17)	Georgia.....	318
18)	Notre Dame.....	313
19)	Iowa State.....	301
20)	Iowa.....	235
21)	TCU.....	173
22)	St. John's (N.Y.).....	164
23)	Maryland.....	98
24)	Vanderbilt.....	80
25)	Michigan State.....	66

**Others receiving votes:** Nebraska 64, Wis. Green Bay 38, Kansas St. 32, DePaul 21, Purdue 17, Penn St. 16, Northwestern 9, Dayton 9, California 9, Kansas 8, Tulane 6, Boston Coll. 5, USC 4, Gonzaga 3, San Diego St. 2, LSU 2, Oklahoma St. 1



## 2010-11 University of Delaware Game-By-Game Team Statistics

	Pts.	FG	FG%	3FG	3FG%	FT	FT%	O-D-R	PF	A	TO	Blk	Stl
UMBC vs. Delaware	44 59	16-57 18-52	28.1 34.6	6-19 5-11	31.6 45.5	6-7 18-25	85.7 72.0	11-20-31 18-30-48	23 15	8 7	18 23	3 5	5 8
Villanova vs. Delaware	62 69	19-52 25-52	36.5 48.1	10-30 4-9	33.3 44.4	14-15 15-18	93.3 83.3	5-19-24 9-29-38	15 16	14 11	11 11	0 3	2 2
Delaware at Yale	79 61	29-52 23-55	55.8 41.8	3-5 9-26	60.0 34.6	18-23 6-9	78.3 66.7	11-29-40 5-15-20	15 17	7 14	19 20	4 1	7 11
St. Francis (Pa.) vs. Delaware	52 68	19-67 23-61	28.4 37.7	8-21 3-9	38.1 33.3	6-11 19-23	54.5 82.6	12-25-37 16-40-56	20 11	8 7	14 17	10 1	10 7
Delaware at La Salle													
Princeton vs. Delaware													
Delaware at Navy													
Delaware at Penn State													
St. Joseph's vs. Delaware													
Delaware vs. Vanderbilt													
Delaware vs. TBA													
Hofstra vs. Delaware													
Delaware vs. Northeastern													
Delaware at Drexel													
William & Mary vs. Delaware													
Old Dominion vs. Delaware													
Delaware at UNC Wilmington													
Delaware at Georgia State													
George Mason vs. Delaware													
Delaware at Hofstra													
Northeastern vs. Delaware													
Drexel vs. Delaware													
Delaware at Towson													
Delaware at William & Mary													
Delaware at George Mason													
James Madison vs. Delaware													
VCU vs. Delaware													
Delaware at Old Dominion													
Delaware at CAA Tournament													

## 2010-11 Women's Basketball Individual Honors

**Elena Delle Donne**

**Pre-Season Wooden National Player of the Year Award Watch List  
Pre-Season Naismith National Player of the Year Award Watch List  
Pre-Season Wade National Player of the Year Trophy Watch List  
CAA Pre-Season Co-Player of the Year  
Pre-Season Associated Press All-American  
Basketball Time's Pre-Season Second-Team All-America  
Colonial Athletic Association Player of the Week (Nov. 15, Nov. 22)**



# UD WOMEN'S BASKETBALL

## MEET THE TEAM



**Front Row (L-R):** Trumae Lucas, Jocelyn Bailey, Kayla Miller, Eva Riddick, Vanessa Kabongo, Akeema Richards, Meghan McLean. **Back Row (L-R):** Strength & Conditioning Coach Augie Maurelli, Associate Head Coach Jeanine Radice, Assistant Coach Tiara Malcom, Director of Operations Allie Fedorowicz, Lauren Carra, Chelsea Craig, Kelsey Buchanan, Jasmine Gibson, Elena Delle Donne, Sarah Acker, Danielle Parker, Jaquetta May, Assistant Coach Mark McCaleb, Student Athletic Trainer Ashley Lazas, Assistant Athletic Trainer Erin McLaughlin, Head Coach Tina Martin . (Photo by UD Photo Services)

### 2010-11 Delaware Women's Basketball Roster

No.	Name	Yr.	Pos.	Ht.	Hometown/High School (Previous School)
2	Jocelyn Bailey **	Jr.	G	6-0	Kensington, Md./The Bullis School
3	Jaquetta May *	So.	G	5-9	Wilmington, Del./Delcastle
4	Meghan McLean **	Jr.	G	5-9	Pittsburgh, Pa./Upper St. Clair
5	Vanessa Kabongo **	Jr.	G	5-10	Toronto, Canada/Eastern Commerce
10	Kayla Miller *	Jr.	G	5-8	Wilmington, Del./Ursuline Academy (GWU)
11	Elena Delle Donne *	So.	F/G	6-5	Wilmington, Del./Ursuline Academy
12	Danielle Parker *	So.	F	6-2	Phoenix, Md./Dulaney
13	Kelsey Buchanan	Fr.	C	6-3	South Riding, Va./Freedom
15#	Akeema Richards	So.r	G	5-7	Baltimore, Md./Western (West Virginia)
20	Eva Riddick ***	Sr.	F	6-3	Rochester, N.Y./Rush-Henrietta
21#	Trumae Lucas	Jr.r	G	5-8	Greensboro, N.C./Grimley (Florida)
22	Lauren Carra *	So.	G	5-9	Dunmore, Pa./Dunmore
45	Chelsea Craig	So.	F	6-2	Rockville, Md./Wootton
51	Sarah Acker	Jr.	C	6-3	Nanticoke, Pa./Greater Nanticoke (St. Joe's)
55	Jasmine Gibson **	Jr.	C	6-3	New Castle, Del./Sanford

\* - Letters Won

# - Ineligible for 2010-11 season due to NCAA Transfer Rules

### Coaching Staff

**Heach Coach:** Tina Martin  
Lock Haven University, 1986  
15th season at Delaware

**Associate Heach Coach:** Jeanine Radice  
Fordham University, 1989  
15th Season at Delaware

**Assistant Coach:** Tiara Malcom  
University of Delaware, 2005  
Fifth Season at Delaware

**Assistant Coach:** Mark McCaleb  
University of Massachusetts, 1989  
First Season at Delaware

### Pronunciation Guide

**#3 Jaquetta May:** ja KWETT ah

**#5 Vanessa Kabongo:** kuh-BON-go

**#11 Elena Delle Donne:** Dell-AH Dawn

**#20 Eva Riddick:** EE-vuh

**#21 Truemae Lucas:** True-MAY

**#22 Lauren Carra:** cah-RAH

**#15 Akeema Richards:** ah-KEEM-ah

**Jeanine Radice:** ruh-DEESE

# UD HEAD COACH TINA MARTIN

## 15th Season at Delaware • Lock Haven (Pa.), 1986



the PSAC's all-time leading scorer with 2,157 career points.

15th season at University of Delaware...prior to the 2010-11 season had compiled a 258-161(.616) record at the helm of the Hens' basketball program, becoming the fastest UD basketball coach (men's or women's) to reach 100 career wins...has led the Blue Hens to 20-win seasons in eight of the last 10 years and seven post-season appearances, including NCAA bids in 2001 and 2007...Martin began her coaching career at Lock Haven in 1986-87, serving as a graduate assistant, and the next season moved on to Seton Hall...spent nine seasons at Seton Hall as an assistant coach in a program that made back-to-back NCAA tournament appearances in 1994 and 1995, advancing to the Sweet 16 in 1994...a native of Williamsport, Pa., she was a two-time Division II All-American at Lock Haven University, a four-time Pennsylvania State Athletic Conference all-star, and two-time league Player of the Year who finished her career as

### Hens Under Martin

Home.....	135-49
Away.....	102-93
Neutral.....	25-19
vs. CAA.....	109-53
vs. CAA at Home.....	62-21
vs. CAA on Road.....	47-32
In Overtime.....	11-8
November.....	37-27
December.....	59-23
January.....	73-48
February.....	67-41
March.....	26-22
Sunday.....	75-42
Monday.....	15-3
Tuesday.....	14-14
Wednesday.....	22-9
Thursday.....	66-36
Friday.....	37-25
Saturday.....	33-32

### Martin's Teams Vs.

Opponent	Home	Away	Neut.	Overall
UMBC.....	1-0	1-0	0-0	2-0
Villanova.....	2-0	1-0	0-0	3-0
Yale.....	0-0	1-0	0-0	1-0
Saint Francis (Pa.).....	2-0	2-0	0-0	4-0
La Salle.....	4-2	3-2	0-0	7-4
Princeton.....	3-0	3-1	0-0	6-1
Navy.....	3-0	0-1	0-0	3-1
Penn State.....	0-0	0-0	0-0	0-0
Saint Joseph's.....	0-0	0-2	0-0	0-2
Vanderbilt.....	0-0	0-0	0-0	0-0
TBA.....	0-0	0-0	0-0	0-0
Hofstra.....	13-1	7-7	0-0	20-8
Northeastern.....	9-1	7-3	1-0	17-4
Drexel.....	8-6	8-7	3-0	19-13
William & Mary.....	6-1	4-3	0-0	10-4
Old Dominion.....	2-5	1-8	0-2	3-15
UNC Wilmington.....	7-2	4-3	1-1	12-6
Georgia State.....	3-1	2-1	0-0	5-2
George Mason.....	8-1	7-3	1-0	16-4
Towson.....	10-4	8-6	0-1	18-11
James Madison.....	6-3	3-6	1-1	10-10
VCU.....	6-2	4-5	1-0	11-7

### Tina Martin Milestone Wins

Date	Opponent	Milestone
Nov. 22, 1996	Delaware State.....	1st Career Victory
Feb. 26, 2000	Vermont.....	50th Career Victory
March 10, 2001	Vermont.....	Won America East Championship
March 1, 2002	Hofstra.....	100th Career Victory
Jan. 2, 2005	VCU.....	150th Career Victory
Jan. 9, 2005	Old Dominion.....	Ended ODU's 122-Game CAA Home Win Streak
Dec. 29, 2005	Saint Joseph's.....	Won SJU Classic Championship
Nov. 24, 2006	Kentucky.....	Defeated #20 Wildcats
Jan. 4, 2007	Hofstra.....	200th Career Victory
Feb. 22, 2007	James Madison.....	Defeated #22 Dukes in front of over 3,000 fans
Jan. 10, 2010	Northeastern.....	Earned 100th CAA Regular Season Victory
Jan. 28, 2010	Towson.....	250th Career Victory



## Delaware Season By Season

**MARY ANN HITCHENS** (.70-42, .625, 7 seasons)

Season	Record	Outcome
1971-72	8-4.....	3rd Place, EAIWA Regionals
1972-73	9-5.....	3rd Place, EAIWA Regionals
1973-74	8-7..	3rd Place, Mid-Atlantic Regionals
1974-75	12-5.....	3rd Place, EAIWA Regionals
1975-76	12-6.....	3rd Place, EAIWA Regionals
1976-77	9-9.....	3rd Place, EAIWA Regionals
1977-78	12-6.....	2nd Place, EAIWA Regionals

**JOYCE PERRY** (266-212, .556, 18 seasons)

Season	Record	Outcome
1978-79	6-11.....	
1979-80	7-13.....	
1980-81	21-7.....	
1981-82	9-14.....	
1982-83	12-12.....	1st Place, ECC West
1983-84	22-4.....	1st Place, ECC
1984-85	19-9.....	2nd Place, ECC
1985-86	15-15.....	3rd Place, ECC
1986-87	10-17.....	6th Place, ECC
1987-88	18-11.....	3rd Place, ECC
1988-89	23-6.....	1st Place, ECC
1989-90	21-9.....	1st Place, ECC
1990-91	18-11.....	1st Place, ECC
1991-92	15-14.....	4th Place, NAC
1992-93	17-11.....	4th Place, NAC
1993-94	10-17.....	5th Place, NAC
1994-95	12-15.....	7th Place, NAC
1995-96	11-16.....	5th Place, NAC

**TINA MARTIN** (258-161, .616, 14 Seasons)

Season	Record	Outcome
1996-97	9-19.....	7th, America East
1997-98	6-21.....	10th, America East
1998-99	16-11.....	5th, America East
1999-2000	21-8.....	3rd, America East
2000-01	26-5.....	1st, America East
2001-02	23-7.....	2nd, CAA
2002-03	22-9.....	T-1st, CAA
2003-04	19-10.....	4th, CAA
2004-05	25-6.....	1st, CAA
2005-06	22-8.....	3rd, CAA
2006-07	26-6.....	T-2nd, CAA
2007-08	7-24.....	9th, CAA
2008-09	15-15.....	9th, CAA
2009-10	21-12.....	5th, CAA

# UD WOMEN'S BASKETBALL COACHING STAFF



## Associate Head Coach Jeanine Radice

Fordham University, 1989  
15th Season at Delaware

Jeanine Radice, a former standout player at Fordham and an assistant coach at Seton Hall for four seasons, begins her 15th season as Tina Martin's top assistant on the University of Delaware women's basketball staff in 2010-11. Her tenure is longer than any other current assistant coach among UD women's athletics teams.

Radice, who was promoted to associate head coach in April, 2000, has played a key role in Delaware's rise to the top of the America East conference and now to the upper echelon of the Colonial Athletic Association. During her 13 seasons as Martin's top assistant, she has led the Blue Hens to 237 wins, a .613 winning percentage, two NCAA Tournament berths, four Women's National Invitation Tournament appearances, and three conference titles. The Blue Hens have advanced to their league tournament semifinals nine times in 14 years.



## Assistant Coach Tiara Malcom

University of Delaware, 2005  
Fifth Season at Delaware

Tiara Malcom, a record-setting forward and one of the top women's basketball players in University of Delaware basketball history, begins her fifth season with the Blue Hen coaching staff in 2010-11.

Malcom was a four-year standout for the Blue Hens under Martin, leading the squad to a four year mark

of 89-32, Colonial Athletic Association regular season titles in 2003 and 2005, and berths in the Women's National Invitation Tournament three times. The Hens, who went 55-15 in conference action during Malcom's career, and appeared in the CAA Tournament championship game in both 2003 and 2005.

Malcom, who served as captain of the 2004-05 squad, was a three-time All-CAA selection, earning second team honors in 2003 and 2004 before garnering first team recognition in 2005 when she was named CAA Player of the Year. That season she led the CAA in scoring and ranked atop league leaders in rebounding.



## Assistant Coach Mark McCaleb

University of Massachusetts, 1989  
First Season at Delaware

Mark McCaleb, who served as head coach at Division II University of Bridgeport, was hired as women's basketball assistant coach at the University of Delaware in September, 2010.

McCaleb joins the Delaware staff after serving the last six seasons as head coach at Bridgeport. During his time at Bridgeport, he led the team to

one of the largest turnarounds in Division II basketball, taking the team from a 3-24 overall record in 2003-04, improving 17 games and coaching the squad to a 22-9 record in his first season at Bridgeport in 2005-06. In his six seasons, he posted a record of 103-71, including a 20-10 mark last season.

During the 2003-04 season, McCaleb was the head coach at NCAA Division III Saint Joseph's College of Maine and led the perennial Top 20 program to a record of 13-12. From 2001-03, McCaleb served as the academic coordinator and recruiter at CAA-rival Northeastern University.



## Director of Basketball Operations • Allie Fedorowicz

Cornell University, 2010  
First Season at Delaware

Allie Fedorowicz was hired as the Director of Basketball Operations at the University of Delaware in September of 2010, following an outstanding career at Cornell University where she was a co-captain this past season.

A native of Abington, Pa., Fedorowicz was twice named to an All-Tournament team

in 2009-10, earning honors at DePaul Classic and again at the Virginia Holiday Tournament. She was a starter on the 2007-08 team which captured the Ivy League championship and earned a berth in the NCAA Tournament.

As a senior, she led the team in points (12.2 per game) and steals (29) while averaging 31.0 minutes a game. She left her mark in the Big Red record book, ranking second in career three-point field goals (148) and third in career free throw percentage (.816).

# #2 JOCELYN BAILEY

Junior • Guard • 6-0 • Kensington, Md. • The Bullis School

## As A Blue Hen

Expected to battle for a starting position in Blue Hen backcourt.

## 2009-10 Season

One of three players to appear in each of the Blue Hens' 33 games • started 22 contests • averaged 5.0 points and 4.4 rebounds on the year • added 37 steals to rank second on the team • contributed 24 assists • swatted away nine blocks in 723 minutes on the hardwood • scored a season-high 15 points in the season opener at St. Francis (Pa.) (11/17) when she went 9-for-10 from the free throw line • notched double-digit performances at UMBC (12/5) and against Towson (1/28) when she went 5-for-7 from the floor (.714) • brought down a season-high 11 boards against Navy (12/11) and scrapped up eight against Buffalo (12/22) and UMBC • tallied three steals on seven different occasions • was a perfect 5-for-5 from the foul line against the Retrievers • played a season-high 33 minutes in win at Hofstra (1/24).

## 2008-09 Season

Appeared in all but one game during her freshman campaign • made only start of the season at VCU (1/18) • averaged 6.0 points and 3.8 rebounds on the year • contributed 28 steals and 15 assists • scored a season-high 14 points against Maryland Eastern Shore (12/4), which included a 10-12 shooting night from the free throw line • scored 10 points six times on the year • reached double figures in three straight games against Stony Brook (12/28), Loyola Marymount (12/29) and Drexel (12/30) • scored 10 points in back-to-back games versus William & Mary (2/11) and Old Dominion (2/15) • grabbed a season-high eight rebounds against Columbia (11/16) in her Blue Hen debut • dished out a season-best four assists at Massachusetts (12/10) • posted four steals at Old Dominion.

## High School

Standout basketball player at The Bullis School in Potomac, Md. under head coach James Nickles • led team to an undefeated ISL Championship season in 2005-06 • earned All-ISL honors in 2006-07 and 2007-08 • All-County as a senior • McDonald's All-American nominee in 2008 • honor student.

## Personal

Jocelyn Jasmine Bailey • born in Washington, D.C. • daughter of David E. Bailey, Jr. and Ms. Jackie Davis • father is a police officer and mother is a paraeducator • has brothers David E. Bailey III, Davon Bailey and Daniel Bailey • fashion merchandising major at Delaware • aspires to be a leader in the fashion industry • cites parents as the biggest influence on basketball career • hobbies include drawing and shopping.

Date	Opponent	FG-A	3FG-A	FT-A	O-D-R	PF	A	T	B	S	Pts.	Min.
11/12	UMBC	1-5	0-0	1-2	3-4-7	4	0	2	1	0	3	25
11/16	Villanova	2-5	0-0	2-2	3-2-5	3	0	2	0	1	6	38
11/20	at Yale	3-4	0-0	2-2	1-6-7	4	0	2	0	0	8	23
11/23	St. Francis (Pa.)	2-5	0-0	0-0	4-1-5	4	0	2	1	0	4	15
11/28	at La Salle											
12/1	Princeton											
12/5	at Navy											
12/19	at Penn State											
12/22	Saint Joseph's											
12/29	vs. Vanderbilt											
12/30	vs. TBA											
1/2	Hofstra											
1/6	at Northeastern											
1/9	at Drexel											
1/13	William & Mary											
1/16	Old Dominion											
1/20	at UNCW											
1/23	at Georgia State											
1/27	George Mason											
1/30	at Hofstra											
2/3	Northeastern											
2/6	Drexel											
2/10	at Towson											
2/13	at William & Mary											
2/17	at George Mason											
2/20	James Madison											
2/24	VCU											
2/27	at Old Dominion											
3/2	Towson											

Year	G/GS	FG-FGA	PCT	3-PT-FGA	PCT	FT-FTA	PCT	AST	STL	BLK	REB	RPG	PTS	PPG	Min.	Avg.
2008-09	29/1	59-181	.326	0-1	.000	56-95	.589	15	28	7	111	3.8	174	6.0	543	18.7
2009-10	33/22	61-170	.359	0-1	.000	43-72	.597	24	37	9	144	4.4	165	5.0	723	21.9
2010-11	4/4	8-19	.421	0-0	.000	5-6	.833	0	1	2	24	6.0	21	5.3	101	25.3
<b>Totals</b>	<b>66/27</b>	<b>128-370</b>	<b>.345</b>	<b>0-2</b>	<b>.000</b>	<b>104-173</b>	<b>.601</b>	<b>39</b>	<b>66</b>	<b>18</b>	<b>279</b>	<b>4.2</b>	<b>360</b>	<b>5.4</b>	<b>1,367</b>	<b>20.7</b>

## Career Highs

**Points:** 15 at Saint Francis (Pa.), 11/17/09  
**FG Made:** 5, twice  
**FG Attempted:** 16 vs. William & Mary, 2/11/09  
**3-Pointers Made:** n/a  
**3-Pointers Attempted:** 1, twice  
**FT Made:** 10 at Maryland Eastern Shore, 12/4/08  
**FT Attempted:** 12 at Maryland Eastern Shore, 12/4/08  
**Rebounds:** 11 vs. Navy, 12/11/09  
**Assists:** 4 at Massachusetts, 12/10/08  
**Blocks:** 2 at Quinnipiac, 11/25/08  
**Steals:** 4 at Old Dominion, 2/15/09  
**Minutes:** 38 vs. Villanova, 11/16/10

## Season Highs

**Points:** 8 vs. Yale, 11/20/10  
**FG Made:** 3, vs. Yale, 11/20/10  
**FG Attempted:** 5, three times  
**3-Pointers Made:** n/a  
**3-Pointers Attempted:** n/a  
**FT Made:** 2, twice  
**FT Attempted:** 2, three times  
**Rebounds:** 7, twice  
**Assists:** n/a  
**Blocks:** 1, twice  
**Steals:** 1 vs. Villanova, 11/16/10  
**Minutes:** 38 vs. Villanova, 11/16/10

# #3 JAQUETTA MAY

Sophomore • Guard • 5-9 • Wilmington, Del. • Delcastle



## As A Blue Hen

Will challenge for playing time in the Delaware backcourt as a sophomore.

## 2009-10 Season

Saw action in 22 of the Blue Hens' contests including the each of the final 17 games of the season • started the Hens' season finale game when UD hosted Richmond (3/18) in the first round of the WNIT • contributed 82 points and 62 boards to average 3.7 points and 2.8 rebounds per game • made 21 steals on the season, dished out 19 assists and made good on eight blocks • scored a season-high 12 points in a stand-out game at VCU (1/21) • notched her second double-digit game against the Spiders with 10, and tallied nine against George Mason (2/8) • pulled down nine rebounds at VCU and grabbed eight against GMU • dished out four assists against Mason and dealt three against Drexel (3/12) and Northeastern (2/25) • made three steals against George Mason (3/11) in the first round of the Colonial Athletic Association Tournament hosted by James Madison • saw a season-high 32 minutes of action at VCU • shared the UD Most Improved Player Award with Danielle Parker.

## High School

First team All-State selection in 2009 after earning second team honors in 2008 and third team honors in 2007 • led Delcastle Technical High School to the 2009 state championship • averaged 17.5 points, 4.2 assists, 3.0 steals and 2.1 blocks per game as a senior • won National AAU Division II Championships in 2006-07 and 2007-08 • four-year letterwinner who earned two captains pins • distinguished honor roll student.

## Personal

Jaquetta Tamineke May • daughter of Jeffrey and Virginia May • has a sister, Candice, and a brother, Jeffrey • sport management major at Delaware • is a Certified Nursing Assistant who worked as Churchmans Village Nursing Home during the summer • enjoys playing the drums, playing the piano, and singing during her free time.

Date	Opponent	FG-A	3FG-A	FT-A	O-D-R	PF	A	T	B	S	Pts.	Min.
11/12	UMBC	0-2	0-0	3-4	2-5-7	3	2	3	1	3	3	18
11/16	Villanova	2-6	0-0	0-0	3-2-5	1	2	0	0	1	4	19
11/20	at Yale	3-4	0-0	3-5	0-3-3	0	0	1	1	1	9	16
11/23	St. Francis (Pa.)	2-4	0-0	1-2	2-3-5	2	2	3	2	2	5	22
11/28	at La Salle											
12/1	Princeton											
12/5	at Navy											
12/19	at Penn State											
12/22	Saint Joseph's											
12/29	vs. Vanderbilt											
12/30	vs. TBA											
1/2	Hofstra											
1/6	at Northeastern											
1/9	at Drexel											
1/13	William & Mary											
1/16	Old Dominion											
1/20	at UNCW											
1/23	at Georgia State											
1/27	George Mason											
1/30	at Hofstra											
2/3	Northeastern											
2/6	Drexel											
2/10	at Towson											
2/13	at William & Mary											
2/17	at George Mason											
2/20	James Madison											
2/24	VCU											
2/27	at Old Dominion											
3/2	Towson											

**Career Highs**  
**Points:** 12 at VCU, 1/21/10  
**FG Made:** 5 at VCU, 1/21/10  
**FG Attempted:** 10 vs. George Mason, 2/7/10  
**3-Pointers Made:** n/a  
**3-Pointers Attempted:** n/a  
**FT Made:** 3, three times  
**FT Attempted:** 5 vs. Yale, 11/20/10  
**Rebounds:** 9 at VCU, 1/21/10  
**Assists:** 4 vs. George Mason, 2/7/10  
**Blocks:** 2, three times, most recently vs. St. Francis, 11/23/10  
**Steals:** 3 vs. UMBC, 11/12/10  
**Minutes:** 32 at VCU, 1/21/10

**Season Highs**  
**Points:** 9 vs. Yale, 11/20/10  
**FG Made:** 3 vs. Yale, 11/20/10  
**FG Attempted:** 6 vs. Villanova, 11/16/10  
**3-Pointers Made:** n/a  
**3-Pointers Attempted:** n/a  
**FT Made:** 3, twice  
**FT Attempted:** 5 vs. Yale, 11/20/10  
**Rebounds:** 7 vs. UMBC, 11/12/10  
**Assists:** 2, three times, most recently vs. St. Francis 11/23/10  
**Blocks:** 2 vs. St. Francis 11/23/10  
**Steals:** 3 vs. UMBC, 11/12/10  
**Minutes:** 22 vs. St. Francis 11/23/10

Year	G/GS	FG-FGA	PCT	3-PT-FGA	PCT	FT-FTA	PCT	AST	STL	BLK	REB	RPG	PTS	PPG	Min.	Avg.
2009-10	22/1	31-60	.516	0-0	.000	20-34	.588	19	21	8	62	2.8	82	3.7	298	13.5
2010-11	4/0	7-16	.438	0-0	.000	7-11	.636	6	7	4	20	5.0	21	5.3	75	18.8
<b>Totals</b>	<b>26/1</b>	<b>38-76</b>	<b>.500</b>	<b>0-0</b>	<b>.000</b>	<b>27-45</b>	<b>.600</b>	<b>25</b>	<b>28</b>	<b>12</b>	<b>82</b>	<b>3.1</b>	<b>103</b>	<b>3.9</b>	<b>373</b>	<b>14.3</b>

# #4 MEGHAN McLEAN

Junior • Guard • 5-9 • Pittsburgh, Pa. • Upper St. Clair



## As A Blue Hen

Expected to get increased playing time in the Blue Hen backcourt as a point guard as a junior...should see additional action due to back injury to starter Kayla Miller.

## 2009-10 Season

Saw action in eight games • contributed seven points and three boards averaging 0.9 points and 0.4 rebounds per game • went 2-for-3 from beyond the arc • tallied three points in games against Houston (11/27) in the first round of the Coors Rocky Mountain Invitational at Colorado State and in the Hens' season opener at St. Francis (Pa.) (11/17) • dished out a pair of assists • played a season-high 14 minutes against the Red Flash • named to the Colonial Athletic Association All-Academic 2nd Team • awarded the UD Team Sportsmanship Award.

## 2008-09 Season

Appeared in all 30 games as a freshman and made starts in consecutive games against James Madison (1/14) and VCU (1/18) • ranked second on the team with 10 three-pointers made and was fourth with 28 assists • scored a season-high six points, shooting 2-for-2 from three-point range each time, against Dartmouth (11/28), Massachusetts (12/10), and Hofstra (2/5) • dished out a season-high five assists against James Madison (1/14) and added three in four other games • recorded a season-high four steals against Maine (12/7).

## High School

Three-year letterwinner and two-year captain at Upper St. Clair High School under head coach Ernie Koontz • earned First Team All-Section honors for two years • Elite Eleven selection for two years.

## Personal

Meghan Lea McLean • born in Pittsburgh, Pa. • daughter of David and Judy McLean • father is an architect • has four siblings: Jenny, Allison, David and Susan • aunt Peggy Liberatore played basketball at Toledo • cites AAU coach Jay Monahan as biggest influence on basketball career and parents as biggest fans • sport management major at Delaware with a minor in business • aspires to work in sports marketing for a professional team.

**Career Highs**  
**Points:** 6, three times  
**FG Made:** 2, three times  
**FG Attempted:** 4 vs. Hofstra, 1/8/09  
**3-Pointers Made:** 2, three times  
**3-Pointers Attempted:** 3, twice  
**FT Made:** 2 vs. UMBC, 11/12/10  
**FT Attempted:** 2 vs. UMBC, 11/12/10  
**Rebounds:** 2, nine times, most recently vs. St. Francis 11/23/10  
**Assists:** 5 vs. James Madison, 1/14/09  
**Blocks:** 1 at Towson, 2/22/09  
**Steals:** 4 vs. Maine, 12/7/08  
**Minutes:** 27 at VCU, 1/18/09

**Season Highs**  
**Points:** 2 vs. UMBC, 11/12/10  
**FG Made:** n/a  
**FG Attempted:** 2 vs. UMBC, 11/12/10  
**3-Pointers Made:** n/a  
**3-Pointers Attempted:** 2 vs. UMBC, 11/12/10  
**FT Made:** 2 vs. UMBC, 11/12/10  
**FT Attempted:** 2 vs. UMBC, 11/12/10  
**Rebounds:** 2, three times, most recently vs. St. Francis 11/23/10  
**Assists:** 1, vs. Villanova, 11/16/10  
**Blocks:** n/a  
**Steals:** n/a  
**Minutes:** 12 vs. Yale, 11/23/10

Date	Opponent	FG-A	3FG-A	FT-A	O-D-R	PF	A	T	B	S	Pts.	Min.
11/12	UMBC	0-2	0-2	2-2	0-2-2	2	0	1	0	0	2	8
11/16	Villanova	0-1	0-1	0-0	0-1-1	1	1	0	0	0	0	5
11/20	at Yale	0-2	0-1	0-0	0-2-2	2	0	0	0	0	0	12
11/23	St. Francis (Pa.)	0-1	0-1	0-0	0-2-2	0	0	2	0	0	0	10
11/28	at La Salle											
12/1	Princeton											
12/5	at Navy											
12/19	at Penn State											
12/22	Saint Joseph's											
12/29	vs. Vanderbilt											
12/30	vs. TBA											
1/2	Hofstra											
1/6	at Northeastern											
1/9	at Drexel											
1/13	William & Mary											
1/16	Old Dominion											
1/20	at UNCW											
1/23	at Georgia State											
1/27	George Mason											
1/30	at Hofstra											
2/3	Northeastern											
2/6	Drexel											
2/10	at Towson											
2/13	at William & Mary											
2/17	at George Mason											
2/20	James Madison											
2/24	VCU											
2/27	at Old Dominion											
3/2	Towson											

Year	G/GS	FG-FGA	PCT	3-PT-FGA	PCT	FT-FTA	PCT	AST	STL	BLK	REB	RPG	PTS	PPG	Min.	Avg.
2008-09	30/2	13-38	.342	10-28	.357	1-2	.500	28	20	1	19	0.6	37	1.2	310	10.3
2009-10	8/0	2-3	.667	2-3	.667	1-2	.500	2	0	0	3	0.3	7	0.9	27	3.4
2010-11	4/0	0-6	.000	0-5	.000	2-2	1.000	1	0	0	7	1.8	2	0.5	35	8.8
<b>Totals</b>	<b>42/2</b>	<b>15-47</b>	<b>.319</b>	<b>12-36</b>	<b>.333</b>	<b>4-6</b>	<b>.666</b>	<b>31</b>	<b>20</b>	<b>1</b>	<b>29</b>	<b>0.7</b>	<b>46</b>	<b>1.1</b>	<b>372</b>	<b>8.8</b>

# #5 VANESSA KABONGO

Junior • Guard • 5-10 • Toronto, Ontario • Eastern Commerce



## As A Blue Hen

Will be returning to the hardwood after a season-ending injury last December...expected to challenge for a starting spot in the Blue Hen backcourt and could see increased role at point guard with loss of Kayla Miller to pre-season back surgery.

## 2009-10 Season

Saw action in the Hens' first seven games, starting four, before suffering a season-ending injury • tallied 18 points and added 18 rebounds in just 134 minutes of action • averaged 2.6 points and 2.6 boards per game • dished out four assists, made six steals and swatted away one block during non-conference action • scored a season-high seven points in the Hens' season opener at St. Francis (11/17) • pulled down four rebounds in contests against Colorado State (11/28) and the Red Flash • made three steals against Houston (11/27) in the first round of the Coors Rocky Mountain Invitational at Colorado State • played a season-high 29 minutes against the Rams.

## Summer 2009

Competed for Team Canada at the World University Games in Belgrade, Serbia from July 1-10 • averaged 6.9 points and 3.3 rebounds for Team Canada, which finished the tournament with a 2-5 record.

## 2008-09 Season

Was the only player on the team to start all 30 games on the season • ranked second on the team with 10.8 points per game, 65 steals and 37 assists • ranked sixth in the Colonial Athletic Association with 2.2 steals per game and 15th with 10.8 points per game • posted career-highs of 25 points and eight rebounds against George Mason (1/25) • scored 17 points against Maryland Eastern Shore (12/6) and Stony Brook (12/28) • reached double figures 16 times, including seven straight from Jan. 18 through Feb. 8 • posted a career-high six steals three times • named to Courtyard by Marriott LA Westside Holiday Classic at Loyola Marymount All-Tournament Team.

## 2007-08 Season

Appeared in all 31 games while starting 25 for the Blue Hens • tied for second on the team with 6.6 points per game and added 2.7 rebounds per contest • ranked third on the team with 24 assists • scored a season-high 17 points while tying season-bests with three assists and two steals at Towson (3/6) • recorded 14 points in the win over Northeastern (1/20) • scored 12 points in the home game against Towson (2/21) • named to Panera Bread Challenge at UTC All-Tournament Team after scoring 11 points against Louisville (11/23) and adding 10 points and three assists versus Murray State (11/24) • reached double figures in 10 games on the season.

## High School

Led Eastern Commerce High School to an undefeated season and 2004 city championship, and the 2006 city championship • was one of 12 players selected to attend Canada Basketball's National Elite Development Academy • played in five games at the 2005 USAB Youth Festival • won a gold medal with Team Ontario at the 2005 Canada Games and a silver medal at the 2005 U15 National Championships • also played in five games at the U20 FIBA Americas Qualifier in Mexico City and trained with the Junior Women's National Team in Colorado Springs • voted to the first All-Star team at the 2006 National Championships and named 2006 All-Canadian Rising Star.

## Personal

Vanessa Ntumba Kabongo • daughter of Touré Mukendi and Néné Kabongo • born in Democratic Republic of the Congo • has brothers Emmanuel, Henry, Billy, Myck, and Jonathan • Emmanuel played two years at George Brown College in Toronto • accounting major at Delaware • worked as a basketball camp instructor over the summer • enjoys reading, relaxing with family and friends, shopping, and watching movies in her spare time.

# #5 VANESSA KABONGO

Junior • Guard • 5-10 • Toronto, Ontario • Eastern Commerce

Date	Opponent	FG-A	3FG-A	FT-A	O-D-R	PF	A	T	B	S	Pts.	Min.
11/12	UMBC	0-3	0-0	1-2	2-2-4	1	0	4	0	1	1	22
11/16	Villanova	2-5	1-1	0-0	0-0-0	3	2	0	0	0	5	21
11/20	at Yale	0-3	0-0	0-0	1-1-2	3	0	2	0	0	0	21
11/23	St. Francis (Pa.)	1-4	0-1	5-6	0-1-1	1	1	2	0	1	7	21
11/28	at La Salle											
12/1	Princeton											
12/5	at Navy											
12/19	at Penn State											
12/22	Saint Joseph's											
12/29	vs. Vanderbilt											
12/30	vs. TBA											
1/2	Hofstra											
1/6	at Northeastern											
1/9	at Drexel											
1/13	William & Mary											
1/16	Old Dominion											
1/20	at UNCW											
1/23	at Georgia State											
1/27	George Mason											
1/30	at Hofstra											
2/3	Northeastern											
2/6	Drexel											
2/10	at Towson											
2/13	at William & Mary											
2/17	at George Mason											
2/20	James Madison											
2/24	VCU											
2/27	at Old Dominion											
3/2	Towson											

## Career Highs

**Points:** 25 vs. George Mason, 1/25/09  
**FG Made:** 8, five times  
**FG Attempted:** 23 vs. UNC Wilmington, 1/22/09  
**3-Pointers Made:** 1, five times, most recently versus Villanova, 11/16/10  
**3-Pointers Attempted:** 2 vs. La Salle, 11/28/07  
**FT Made:** 9 vs. George Mason, 1/25/09  
**FT Attempted:** 11 vs. George Mason, 1/25/09  
**Rebounds:** 8 vs. George Mason, 1/25/09  
**Assists:** 3, four times  
**Blocks:** 1, seven times  
**Steals:** 6, three times  
**Minutes:** 40 vs. Hofstra, 1/8/09

## Season Highs

**Points:** 7 vs. St. Francis 11/23/10  
**FG Made:** 2 vs. Villanova, 11/16/10  
**FG Attempted:** 5 vs. Villanova, 11/16/10  
**3-Pointers Made:** 1 vs. Villanova, 11/16/10  
**3-Pointers Attempted:** 1, twice, most recently vs. St. Francis 11/23/10  
**FT Made:** 5 vs. St. Francis 11/23/10  
**FT Attempted:** 6 vs. St. Francis 11/23/10  
**Rebounds:** 4 vs. UMBC, 11/12/10  
**Assists:** 2 vs. Villanova, 11/16/10  
**Blocks:** n/a  
**Steals:** 2, twice, most recently vs. St. Francis 11/23/10  
**Minutes:** 22 vs. UMBC, 11/12/10

Year	G/GS	FG-FGA	PCT	3-PT-FGA	PCT	FT-FTA	PCT	AST	STL	BLK	REB	RPG	PTS	PPG	Min.	Avg.
2007-08	31/25	85-253	.336	3-8	.375	32-54	.593	24	19	2	83	2.7	205	6.6	749	24.2
2008-09	30/30	131-384	.341	1-4	.250	60-89	.674	37	65	4	141	4.7	323	10.8	921	30.7
2009-10	7/4	8-30	.267	0-2	.000	2-4	.500	4	6	1	18	2.6	18	2.6	134	19.1
2010-11	4/4	3-15	.200	1-2	.500	6-8	.750	3	2	0	7	1.8	13	3.3	85	21.3
<b>Totals</b>	<b>72/63</b>	<b>227-682</b>	<b>.333</b>	<b>5-16</b>	<b>.313</b>	<b>100-155</b>	<b>.645</b>	<b>68</b>	<b>92</b>	<b>7</b>	<b>249</b>	<b>3.5</b>	<b>559</b>	<b>7.8</b>	<b>1,889</b>	<b>26.2</b>

# #10 KAYLA MILLER

Junior • Guard • 5-8 • Wilmington, Del. • Ursuline Academy • (GWU)

## As A Blue Hen

Will serve as a co-captain in 2010-11... slated to return as team's starting point guard but will be out indefinitely after undergoing back surgery in November.

## 2009-10 Season

Served as a co-captain with Eva Riddick • saw action in 24 games • made 20 starts after sitting out the first nine games of the season due to NCAA transfer regulations • contributed 85 points and 43 rebounds for the Blue Hens • averaged 3.5 points and 1.8 boards per game • dished out a team-high 74 assists, made 27 steals and managed one block on the season • tallied a season-high 10 points against George Mason (2/8) • added nine against Drexel (1/17) and Buffalo (12/22) • drained a pair of three-pointers against George Mason (3/11) and Massachusetts (12/30) • pulled down a season-high six rebounds against Old Dominion (3/13) in the semifinals of the Colonial Athletic Association Tournament • dealt a team season-high seven assists against Towson (1/28) and six against UNC Wilmington (1/14) • made a trio of steals on four different occasions • played a season-high 40 minutes in games against ODU, and twice against Drexel (3/12 and 1/17) • named to the CAA All-Academic 2nd-Team • selected as Delaware's nominee for the CAA Dean Ehlers Leadership Award • presented the Joyce Perry Memorial Coaches' Award at the annual women's basketball banquet.

## 2008-09 Season

Transferred to Delaware from George Washington following the fall 2008 semester • appeared in seven games for the Colonials, averaging 1.3 points and 0.9 rebounds in six minutes per contest • scored nine points on 3 of 4 shooting from the field and 2 of 2 shooting from the free throw line while adding two assists in 17 minutes against Coppin State.

## High School

Three-time All-State selection who led Ursuline Academy to the 2005, 2006 and 2008 state championships • averaged 14.0 points, 6.0 assists, 3.0 rebounds and 2.0 steals per game to earn first team All-State honors as a senior in 2008 • 2006 honorable mention All-State and 2007 third team All-State selection • four-time all-conference selection who earned first team honors as a junior and senior • member of Spirit Club.

## Personal

Kayla Noel Miller • daughter of Jeff and Karen Miller • has a sister Kelsey, the current Miss Delaware Teen USA, and a brother, Dylan • father played football at Susquehanna University • exercise physiology major at Delaware with a minor in disabilities studies • worked as a basketball camp counselor, helper at First State Surgery Center, and a flagger for Grassbusters over the summer • enjoys dancing, exercising, writing, listening to music, and hanging out with friends during her free time.

Date	Opponent	FG-A	3FG-A	FT-A	O-D-R	PF	A	T	B	S	Pts.	Min.
11/12	UMBC	--	--	--	--	--	--	--	--	--	--	--
11/16	Villanova	--	--	--	--	--	--	--	--	--	--	--
11/20	at Yale	--	--	--	--	--	--	--	--	--	--	--
11/23	St. Francis (Pa.)	--	--	--	--	--	--	--	--	--	--	--
11/28	at La Salle	--	--	--	--	--	--	--	--	--	--	--
12/1	Princeton	--	--	--	--	--	--	--	--	--	--	--
12/5	at Navy	--	--	--	--	--	--	--	--	--	--	--
12/19	at Penn State	--	--	--	--	--	--	--	--	--	--	--
12/22	Saint Joseph's	--	--	--	--	--	--	--	--	--	--	--
12/29	vs. Vanderbilt	--	--	--	--	--	--	--	--	--	--	--
12/30	vs. TBA	--	--	--	--	--	--	--	--	--	--	--
1/2	Hofstra	--	--	--	--	--	--	--	--	--	--	--
1/6	at Northeastern	--	--	--	--	--	--	--	--	--	--	--
1/9	at Drexel	--	--	--	--	--	--	--	--	--	--	--
1/13	William & Mary	--	--	--	--	--	--	--	--	--	--	--
1/16	Old Dominion	--	--	--	--	--	--	--	--	--	--	--
1/20	at UNCW	--	--	--	--	--	--	--	--	--	--	--
1/23	at Georgia State	--	--	--	--	--	--	--	--	--	--	--
1/27	George Mason	--	--	--	--	--	--	--	--	--	--	--
1/30	at Hofstra	--	--	--	--	--	--	--	--	--	--	--
2/3	Northeastern	--	--	--	--	--	--	--	--	--	--	--
2/6	Drexel	--	--	--	--	--	--	--	--	--	--	--
2/10	at Towson	--	--	--	--	--	--	--	--	--	--	--
2/13	at William & Mary	--	--	--	--	--	--	--	--	--	--	--
2/17	at George Mason	--	--	--	--	--	--	--	--	--	--	--
2/20	James Madison	--	--	--	--	--	--	--	--	--	--	--
2/24	VCU	--	--	--	--	--	--	--	--	--	--	--
2/27	at Old Dominion	--	--	--	--	--	--	--	--	--	--	--
3/2	Towson	--	--	--	--	--	--	--	--	--	--	--

Year	G/GS	FG-FGA	PCT	3-PT-FGA	PCT	FT-FTA	PCT	AST	STL	BLK	REB	RPG	PTS	PPG	Min.	Avg.
2009-10	24/20	25-95	.263	11-44	.250	24-44	.545	74	27	1	43	1.8	85	3.5	730	30.4
<b>Totals</b>	<b>24/20</b>	<b>25-95</b>	<b>.263</b>	<b>11-44</b>	<b>.250</b>	<b>24-44</b>	<b>.545</b>	<b>74</b>	<b>27</b>	<b>1</b>	<b>43</b>	<b>1.8</b>	<b>85</b>	<b>3.5</b>	<b>730</b>	<b>30.4</b>



## Career Highs

**Points:** 10 vs. George Mason, 2/7/10  
**FG Made:** 3, twice  
**FG Attempted:** 7 vs. Buffalo, 12/22/09  
**3-Pointers Made:** 2 vs. UMass, 12/30/09  
**3-Pointers Attempted:** 6 vs. UMass, 12/30/09  
**FT Made:** 5 at Hofstra, 1/24/10  
**FT Attempted:** 8, twice  
**Rebounds:** 6 vs. Old Dominion, 3/13/10  
**Assists:** 7 vs. Towson, 1/28/10  
**Blocks:** 1 vs. Drexel, 1/17/10  
**Steals:** 3, three times  
**Minutes:** 40 vs. Drexel, 1/17/10

## Season Highs

**Points:** n/a  
**FG Made:** n/a  
**FG Attempted:** n/a  
**3-Pointers Made:** n/a  
**3-Pointers Attempted:** n/a  
**FT Made:** n/a  
**FT Attempted:** n/a  
**Rebounds:** n/a  
**Assists:** n/a  
**Blocks:** n/a  
**Steals:** n/a  
**Minutes:** n/a

# #1 ELENA DELLE DONNE

All-American, Wooden Award, Naismith Award, Wade Trophy Candidate  
Sophomore • Forward/Guard • 6-5 • Wilmington, Del. • Ursuline Academy



## As A Blue Hen

Delaware's first All-American • expected to again lead the Blue Hen campaign assuming both forward and guard responsibilities • named CAA Co-Preseason Player of the Year • on Wade Trophy, Naismith Trophy and Wooden Award National Player of the Year Watch Lists while earning Preseason All-American votes.

## 2009-10 Season

Played a record-breaking All-American freshman season for the Blue Hens • became the first UD player to be named an All-American • selected to the Associated Press Third Team and a WBCA State Farm Honorable Mention • named ECAC Rookie of the year and selected to the ECAC First Team • became just the second player in Colonial Athletic Association history to receive CAA Player and Rookie of the Year accolades • additionally was named to the CAA First, All-Rookie, All-Defensive, and All-Tournament Teams • awarded the UD Alumni Association Team Most Valuable Player Award and the Blue Hen Basketball Club Outstanding Achievement Award at annual banquet • was honored on multiple occasions as CAA Player and Rookie of the Week • selected as the Army ROTC Best of the Blue Hens Athlete of the Week four times • played one of two games at the Coors Rocky Mountain Invitational and was named to the All-Tournament Team • saw action in 29 games while starting 28 • sat four games due to injury • scored 774 points to set a new single-season record while averaging 26.7 points per game, the third most in the nation • pulled down 254 rebounds good for an average of 8.8 per game • ranked second in the conference with 60 blocks • led the Blue Hens with 38 steals and dished out 56 assists, the second most on the team • went 194-for-216 from the charity stripe to lead the CAA and rank sixth in the nation with an 89.8 percent conversion rate • set a new UD record having hit 66 three-pointers throughout the season • made major headlines with a 54 point performance in Delaware's overtime loss at James Madison (2/18) • went 18-for-28 from the field and 7-for-8 from behind the arc to set new Delaware records • tallied seven 30-plus point games as a freshman, a Delaware career record • recorded eight consecutive 20-plus point performances while scoring in double figures each of her 29 games • drained 16-of-17 free throws against Hofstra (3/3) • set a new UD consecutive free throw record with 39 • kicked off the stretch at George Mason (1/7) before missing her first in six games at Hofstra (1/24) • shot a perfect game from the free throw line on 12 occasions • pulled down a season-high 16 boards at Northeastern (1/10) to help notch one of 12 double-doubles tallied throughout the year • served out five assists on three occasions • made a team season-high six steals against Old Dominion (1/3) and added five against Hofstra • that same game she swatted away a season-high seven blocked shots • also posted six blocks against Georgia State (2/14) and Drexel (1/17) • played a Delaware record 50 minutes of action in the Hens' double overtime loss to the Dragons • added 45 minutes in one of the Hens' three overtime games with Drexel (1/31)

## 2008-09 Season

Did not compete for the Blue Hen basketball team • selected to the CAA All-Rookie Team in volleyball • earned three CAA Rookie of the Week awards • led Delaware with 117 blocks and ranked second on the team with a .223 hitting percentage • volleyball team went 19-16, won its second consecutive CAA Championship, and made its second straight NCAA Tournament appearance under head coach Bonnie Kenny.

## High School

Ranked as the nation's top senior • DIAA all-time leading scorer with 2,818 career points • was named co-Delaware State Player of the Year following junior season and was tabbed the Player of the Year as a senior • led Ursuline Academy to four Delaware state championships (2004, 2005, 2006, and 2008) • 2007-08 National Player of the Year by the Naismith, McDonald's, and Gatorade foundations • Parade First Team All-American • 2005, 2006 and 2008 Gatorade Delaware State Player of the Year • 2008 USA Today Player of the Year • 2006 Slam Magazine First Team All-America selection • 2006 Sports Illustrated Second Team All-America pick • USA Today Third Team All-America • 2004, 2005, 2006 All-Delaware First Team • 2005 and 2006 EA Sports All-America • 2005 Street & Smith All-America Third Team • 2004 Street & Smith All-America Honorable Mention • set national high school record by making 80 consecutive free throws in 2005-06 • scored 50 points in the 2006 state championship game • ranked as No. 1 senior by HoopGurlz.com • led Ursuline to 2007 state volleyball championship • member of National Honor Society.

## Personal

Elena Delle Donne • daughter of Ernest and Joan Delle Donne • has an older sister, Elizabeth, and an older brother, Gene • brother played football for Middle Tennessee State • early childhood education major at Delaware with a focus in special education.

# #11 ELENA DELLE DONNE

Sophomore • Forward/Guard • 6-5 • Wilmington, Del. • Ursuline Academy

Date	Opponent	FG-A	3FG-A	FT-A	O-D-R	PF	A	T	B	S	Pts.	Min.
11/12	UMBC	13-29	4-8	6-6	2-5-7	0	1	5	2	1	36	39
11/16	Villanova	11-19	2-3	10-11	<b>2-10-12</b>	0	3	0	1	0	34	40
11/20	at Yale	15-25	3-4	8-9	1-4-5	0	2	6	1	0	41	37
11/23	St. Francis (Pa.)	9-22	2-3	6-6	<b>4-8-12</b>	2	3	2	4	1	26	39
11/28	at La Salle											
12/1	Princeton											
12/5	at Navy											
12/19	at Penn State											
12/22	Saint Joseph's											
12/29	vs. Vanderbilt											
12/30	vs. TBA											
1/2	Hofstra											
1/6	at Northeastern											
1/9	at Drexel											
1/13	William & Mary											
1/16	Old Dominion											
1/20	at UNCW											
1/23	at Georgia State											
1/27	George Mason											
1/30	at Hofstra											
2/3	Northeastern											
2/6	Drexel											
2/10	at Towson											
2/13	at William & Mary											
2/17	at George Mason											
2/20	James Madison											
2/24	VCU											
2/27	at Old Dominion											
3/2	Towson											

**Bold** - Indicates Double-Double

## Career Highs

**Points:** 54 vs. James Madison, 2/18/10  
**FG Made:** 18 vs. James Madison, 2/18/10  
**FG Attempted:** 28 vs. James Madison, 2/18/10  
**3-Pointers Made:** 7 vs. James Madison, 2/18/10  
**3-Pointers Attempted:** 10, twice  
**FT Made:** 11, three times  
**FT Attempted:** 12, twice  
**Rebounds:** 16 at Northeastern, 1/10/10  
**Assists:** 5, three times  
**Blocks:** 7 vs. Hofstra, 3/3/10  
**Steals:** 5 at Hofstra, 1/24/10  
**Minutes:** 50 vs. Drexel, 1/17/10

**Double-Doubles:** 14, most recently vs. St. Francis 11/23/10

**20+ Point Games:** 28, most recently vs. St. Francis, 11/23/10 (26)

**30+ Point Games:** 11, most recently vs. Yale, 11/20/10 (41)

**40+ Point Games:** 2, most recently vs. Yale, 11/20/10 (41)

## Season Highs

**Points:** 41 vs. Yale, 11/20/10  
**FG Made:** 15 vs. Yale, 11/20/10  
**FG Attempted:** 29 vs. UMBC, 11/12/10  
**3-Pointers Made:** 4 vs. UMBC, 11/12/10  
**3-Pointers Attempted:** 8 vs. UMBC, 11/12/10  
**FT Made:** 10 vs. Villanova, 11/16/10  
**FT Attempted:** 11 vs. Villanova, 11/16/10  
**Rebounds:** 12, twice, most recently vs. St. Francis 11/23/10  
**Assists:** 3, twice, most recently vs. St. Francis 11/23/10  
**Blocks:** 4 vs. St. Francis 11/23/10  
**Steals:** 1, twice, most recently vs. St. Francis 11/23/10  
**Minutes:** 40 vs. Villanova, 11/16/10

**Double-Doubles:** 2, most recently vs. St. Francis 11/23/10

**20+ Point Games:** 4, most recently vs. St. Francis, 11/23/10 (26)

**30+ Point Games:** 3, most recently vs. Yale, 11/20/10 (41)

**40+ Point Games:** 2, most recently vs. Yale, 11/20/10 (41)

Year	G/GS	FG-FGA	PCT	3-PT-FGA	PCT	FT-FTA	PCT	AST	STL	BLK	REB	RPG	PTS	PPG	Min.	Avg.
2009-10	29/28	257-539	.477	66-160	.413	194-216	.898	56	38	60	254	8.8	774	26.7	1,087	37.5
2010-11	4/4	48-95	.505	11-18	.611	30-32	.939	9	2	8	36	9.0	137	34.2	155	38.8
<b>Total:</b>	<b>33/32</b>	<b>305-634</b>	<b>.481</b>	<b>77-178</b>	<b>.433</b>	<b>224-248</b>	<b>.903</b>	<b>65</b>	<b>40</b>	<b>68</b>	<b>290</b>	<b>8.8</b>	<b>911</b>	<b>27.6</b>	<b>1,242</b>	<b>37.6</b>

# #12 DANIELLE PARKER

Sophomore • Forward • 6-2 • Phoenix, Md. • Dulaney

## As A Blue Hen

Expected to challenge once again for a starting position in the Delaware frontcourt.

## 2009-10 Season

Returned from injury to make an immediate impact for the Blue Hens • one of three players to see action in each of the Hens' 33 games • started 28 contests • was the team's fourth leading scorer having tallied 177 points throughout the season on 5.4 points per game • ranked second on the squad in rebounds with 183 good for 5.5 per game • made 25 steals, dished out 13 assists and swatted away nine blocks • scored in double-digits on seven occasions • recorded a season-high 13 points against Northeastern (2/25) and Navy (12/11) • added 10 points in five games • pulled down 12 boards against Drexel (1/17) and 11 against Hofstra (3/3) • tallied her first career double-double against the Pride on a 10 point, 11 rebound performance • twice served out a pair of assists • made two steals in seven different games • blocked a pair of shots on three separate occasions • twice played a season-high 37 minutes against Drexel (1/31 and 1/17) • shared the UD Most Improved Player Award with Jaquetta May.

## 2008-09 Season

Appeared in eight games and started three before suffering a season-ending ACL injury during a practice in mid-December • averaged 7.4 points per game and 6.0 rebounds per game • played 30.3 minutes per contest • scored a season-high 12 points against La Salle (11/19) and 11 points against Quinnipiac (11/25) • scored eight points against Maine (12/7) and added seven versus Dartmouth (11/28) and Maryland Eastern Shore (12/6) • twice grabbed a season-high eight rebounds against Quinnipiac and Maryland Eastern Shore • posted a season-high four steals in her Blue Hen debut versus Columbia (11/16).

## High School

Lettered all four years of high school at Saint Frances Academy (two years) in Baltimore, Md. and Dulaney High School (two years) in Timonium, Md. • First Team All-County and All-Metro selection her junior and senior years • also lettered in volleyball at Dulaney her junior year • honor student • Class President her freshman year • Outstanding Achievement Award winner for Algebra I, II and Geometry during her freshman and sophomore years.

## Personal

Danielle Erica Parker • daughter of Derek Parker and Dr. Sharon Thomas-Parker • has a twin brother, Derek • business undeclared major at Delaware • former AAU teammate of George Mason's Becky Cox • enjoys writing poetry and drawing in her spare time.

Date	Opponent	FG-A	3FG-A	FT-A	O-D-R	PF	A	T	B	S	Pts.	Min.
11/12	UMBC	2-5	0-0	3-4	2-1-3	1	0	1	0	0	7	25
11/16	Villanova	4-7	0-0	3-4	<b>1-10-11</b>	2	0	1	1	0	<b>11</b>	32
11/20	at Yale	4-7	0-0	3-4	<b>4-7-11</b>	1	0	1	0	0	<b>11</b>	32
11/23	St. Francis (Pa.)	1-7	0-0	2-2	2-10-12	1	0	0	0	1	4	30
11/28	at La Salle											
12/1	Princeton											
12/5	at Navy											
12/19	at Penn State											
12/22	Saint Joseph's											
12/29	vs. Vanderbilt											
12/30	vs. TBA											
1/2	Hofstra											
1/6	at Northeastern											
1/9	at Drexel											
1/13	William & Mary											
1/16	Old Dominion											
1/20	at UNCW											
1/23	at Georgia State											
1/27	George Mason											
1/30	at Hofstra											
2/3	Northeastern											
2/6	Drexel											
2/10	at Towson											
2/13	at William & Mary											
2/17	at George Mason											
2/20	James Madison											
2/24	VCU											
2/27	at Old Dominion											
3/2	Towson											

Year	G/GS	FG-FGA	PCT	3-PT-FGA	PCT	FT-FTA	PCT	AST	STL	BLK	REB	RPG	PTS	PPG	Min.	Avg.
2008-09	8/3	24-54	.444	0-0	.000	11-16	.688	7	13	3	48	6.0	59	7.4	242	30.3
2009-10	33/28	62-148	.419	0-0	.000	53-87	.609	13	25	9	183	5.5	177	5.4	821	24.9
2010-11	4/3	11-26	.423	0-0	.000	11-14	.786	0	3	1	37	9.0	33	8.3	119	29.8
<b>Totals</b>	<b>45/34</b>	<b>97-228</b>	<b>.425</b>	<b>0-0</b>	<b>.000</b>	<b>75-111</b>	<b>.675</b>	<b>20</b>	<b>41</b>	<b>13</b>	<b>268</b>	<b>6.0</b>	<b>269</b>	<b>6.0</b>	<b>1,182</b>	<b>26.3</b>



## Career Highs

**Points:** 13, twice  
**FG Made:** 5, four times  
**FG Attempted:** 10, twice  
**3-Pointers Made:** n/a  
**3-Pointers Attempted:** n/a  
**FT Made:** 7 vs. Navy, 12/11/09  
**FT Attempted:** 8, twice  
**Rebounds:** 12, twice, most recently vs. St. Francis, 11/23/10  
**Assists:** 3 at Massachusetts, 12/10/08  
**Blocks:** 2, three times  
**Steals:** 4 vs. Columbia, 11/16/08  
**Minutes:** 37, twice  
**Double-Doubles:** 3, most recently vs. Yale, 11/23/10

## Season Highs

**Points:** 11, most recently vs. Yale, 11/20/10  
**FG Made:** 4 twice, most recently vs. Yale, 11/20/10  
**FG Attempted:** 7, three times, most recently vs. St. Francis, 11/23/10  
**3-Pointers Made:** n/a  
**3-Pointers Attempted:** n/a  
**FT Made:** 3, three times  
**FT Attempted:** 4, most recently vs. Yale, 11/20/10  
**Rebounds:** 12, vs. St. Francis, 11/23/10  
**Assists:** 1 vs. St. Francis, 11/23/10  
**Blocks:** 1, vs. Villanova, 11/16/10  
**Steals:** 1, vs. St. Francis, 11/23/10  
**Minutes:** 32, twice  
**Double-Doubles:** 2, most recently vs. Yale, 11/23/10

**Bold** - Indicates Double-Double

# #13 KELSEY BUCHANAN

Freshman • Center • 6-3 • South Riding, Va. • Freedom

## As A Blue Hen

Expected to challenge for significant playing time in the Delaware frontcourt.

## High School

Played all four years at two-time Virginia State Champion Freedom High School • scored a triple double in first game in state playoffs • hold state block record with 10 • named Player of the Year and All-State in 2010 • earned All-Regional Player of the Year accolades • graduated with over 1,500 points • member of the National Honor Society in junior and senior years • Honor Roll all four years.

## Personal

Kelsey Leigh Buchanan • daughter of Ralph Buchanan and Lenora Johnson • has one younger brother • pregame ritual includes listening to the same playlist and wearing lucky socks • mother played basketball at Lafayette • began playing basketball in sixth grade • chose Delaware because she loved the campus and coaches were honest • human services major at Delaware, with aspirations to be a guidance counselor.



Date	Opponent	FG-A	3FG-A	FT-A	O-D-R	PF	A	T	B	S	Pts.	Min.
11/12	UMBC	0-1	0-0	0-0	1-2-3	1	0	0	0	0	0	4
11/16	Villanova	1-1	0-0	0-0	0-0-0	2	0	3	1	0	2	8
11/20	at Yale	—	—	—	—	—	—	—	—	—	—	—
11/23	St. Francis (Pa.)	0-0	0-0	0-0	0-2-2	0	0	0	0	0	0	4
11/28	at La Salle											
12/1	Princeton											
12/5	at Navy											
12/19	at Penn State											
12/22	Saint Joseph's											
12/29	vs. Vanderbilt											
12/30	vs. TBA											
1/2	Hofstra											
1/6	at Northeastern											
1/9	at Drexel											
1/13	William & Mary											
1/16	Old Dominion											
1/20	at UNCW											
1/23	at Georgia State											
1/27	George Mason											
1/30	at Hofstra											
2/3	Northeastern											
2/6	Drexel											
2/10	at Towson											
2/13	at William & Mary											
2/17	at George Mason											
2/20	James Madison											
2/24	VCU											
2/27	at Old Dominion											
3/2	Towson											

### Career Highs

**Points:** 2 vs. Villanova, 11/16/10  
**FG Made:** 1 vs. Villanova, 11/16/10  
**FG Attempted:** 1, twice  
**3-Pointers Made:** n/a  
**3-Pointers Attempted:** n/a  
**FT Made:** n/a  
**FT Attempted:** n/a  
**Rebounds:** 3 vs. UMBC, 11/12/10  
**Assists:** n/a  
**Blocks:** 1 vs. Villanova, 11/16/10  
**Steals:** n/a  
**Minutes:** 8 vs. Villanova, 11/16/10

### Season Highs

**Points:** 2 vs. Villanova, 11/16/10  
**FG Made:** 1 vs. Villanova, 11/16/10  
**FG Attempted:** 1, twice  
**3-Pointers Made:** n/a  
**3-Pointers Attempted:** n/a  
**FT Made:** n/a  
**FT Attempted:** n/a  
**Rebounds:** 3 vs. UMBC, 11/12/10  
**Assists:** n/a  
**Blocks:** 1 vs. Villanova, 11/16/10  
**Steals:** n/a  
**Minutes:** 8 vs. Villanova, 11/16/10

Year	G/GS	FG-FGA	PCT	3-PT-FGA	PCT	FT-FTA	PCT	AST	STL	BLK	REB	RPG	PTS	PPG	Min.	Avg.
2010-11	3/0	1-2	.500	0-0	.000	0-0	.000	0	0	1	5	1.7	2	0.7	16	5.3
<b>Totals</b>	<b>3/0</b>	<b>1-2</b>	<b>.500</b>	<b>0-0</b>	<b>.000</b>	<b>0-0</b>	<b>.000</b>	<b>0</b>	<b>0</b>	<b>1</b>	<b>5</b>	<b>1.7</b>	<b>2</b>	<b>0.7</b>	<b>16</b>	<b>5.3</b>

# #20 EVA RIDDICK

Senior • Forward • 6-3 • Rochester, N.Y. • Rush-Henrietta



## As A Blue Hen

Fourth-year player expected to start in the Blue Hen frontcourt at forward • enters her senior season ranked 17th in Delaware history with 40 career blocked shots.

## 2009-10 Season

Served as a co-captain with Kayla Miller • one of three Blue Hens to compete in each of UD's 33 games • made 11 starts • scored 54 points throughout the season to average 1.6 per contest • pulled down 112 boards good for 3.4 per game • made 15 steals, 15 blocks and added six assists for the Blue & Gold • scored a season-high five points against Drexel (3/12) and added four on five occasions • brought down seven rebounds in the Blue Hens' CAA Quarterfinals overtime victory against Drexel • tallied six boards on three other occasions • dished out a pair of assists at Princeton (11/21) • made two steals at Towson (2/28) and against George Mason (2/8) • recorded three blocks against Towson (1/28), and two against Drexel and VCU (1/21) • played a season-high 35 minutes against the Dragons during the CAA Tournament.

## 2008-09 Season

Appeared in all 30 games while starting 27 in the Delaware frontcourt • earned UD Team Most Improved Player Award • tied for third on the team with 4.7 rebounds per game and added 3.1 points per game • led the team with 35 blocks • ranked ninth in the Colonial Athletic Association with 1.2 blocked shots per game • posted a career-high 10 points and added nine rebounds at Towson (2/22) • pulled down a career-best 10 rebounds and scored six points at Old Dominion (2/15) • recorded nine points and seven rebounds against Stony Brook (12/28) • posted seven points and seven boards at Georgia State (1/11) • pulled down nine rebounds versus William & Mary (2/11) and eight against Georgia State (3/1) • blocked a career-high five shots against Northeastern (2/26).

## 2007-08 Season

Appeared in 21 games while starting two for the Blue Hens • recorded 44 rebounds and 14 points on the season • also tallied eight steals, five blocks and three assists • scored a season-high four points and added four rebounds in the victory at Georgia State (1/24) • added two points in early season contests against Maryland (11/13), Texas Christian (11/16), Boston College (11/20) and Murray State (11/24) • pulled down a season-best seven rebounds versus TCU (11/16) and VCU (3/2) • collected six boards against La Salle (11/28) • made a season-high three steals against Boston College and added two versus TCU and Murray State.

## High School

Named to USA Top 25 Team • All-Greater Rochester selection • named to 2006 New York Academic All-State Team • led Rush-Henrietta High School to state championships in 2006 and 2007 • named to 2006 Class AAA All-Tournament Team after leading Rush-Henrietta to a 24-2 record and the state title • averaged eight points and 10 rebounds per game as a junior • named to NYSSPHA All-State team in 2007 • three-year letterwinner in basketball and four-year letterwinner in track & field • 2007 sectional champion in the high jump • earned the 2006 Empire State Games gold medal • four-year honor roll student.

## Personal

Eva M. Riddick • daughter of Hope Hopkins • has a younger sister, Monet • born in Valdosta, Ga. • health behavior science major at Delaware with a concentration in fitness management • minoring in strength and conditioning • enjoys reading in her spare time.

Date	Opponent	FG-A	3FG-A	FT-A	O-D-R	PF	A	T	B	S	Pts.	Min.
11/12	UMBC	1-2	0-0	0-3	5-3-8	1	0	2	1	2	2	26
11/16	Villanova	0-1	0-0	0-0	0-1-1	0	0	1	0	0	0	2
11/20	at Yale	—	—	—	—	—	—	—	—	—	—	—
11/23	St. Francis (Pa.)	0-0	0-0	0-0	0-1-1	0	0	1	0	0	0	1
11/28	at La Salle											
12/1	Princeton											
12/5	at Navy											
12/19	at Penn State											
12/22	Saint Joseph's											
12/29	vs. Vanderbilt											
12/30	vs. TBA											
1/2	Hofstra											
1/6	at Northeastern											
1/9	at Drexel											
1/13	William & Mary											
1/16	Old Dominion											
1/20	at UNCW											
1/23	at Georgia State											
1/27	George Mason											
1/30	at Hofstra											
2/3	Northeastern											
2/6	Drexel											
2/10	at Towson											
2/13	at William & Mary											
2/17	at George Mason											
2/20	James Madison											
2/24	VCU											
2/27	at Old Dominion											
3/2	Towson											

Year	G/GS	FG-FGA	PCT	3-PT-FGA	PCT	FT-FTA	PCT	AST	STL	BLK	REB	RPG	PTS	PPG	Min.	Avg.
2007-08	21/2	6-18	.333	0-0	.000	2-6	.333	3	8	5	44	2.1	14	0.7	205	9.8
2008-09	30/27	39-92	.424	0-0	.000	14-28	.500	10	27	35	142	4.7	92	3.1	739	24.6
2009-10	33/11	21-45	.467	0-0	.000	12-23	.522	6	15	15	112	3.4	54	1.6	548	16.6
2010-11	3/1	1-3	.333	0-0	.000	0-3	.000	0	2	1	10	3.3	2	0.7	29	9.7
<b>Totals</b>	<b>87/41</b>	<b>67-158</b>	<b>.424</b>	<b>0-0</b>	<b>.000</b>	<b>28-60</b>	<b>.467</b>	<b>19</b>	<b>52</b>	<b>56</b>	<b>308</b>	<b>3.5</b>	<b>162</b>	<b>1.9</b>	<b>1,521</b>	<b>17.5</b>

## Career Highs

**Points:** 10 at Towson, 2/22/09  
**FG Made:** 4, twice  
**FG Attempted:** 6, seven times  
**3-Pointers Made:** n/a  
**3-Pointers Attempted:** n/a  
**FT Made:** 3 vs. James Madison, 1/14/09  
**FT Attempted:** 5 vs. James Madison, 1/14/09  
**Rebounds:** 10 at Old Dominion, 2/15/09  
**Assists:** 3 at UNC Wilmington, 1/22/09  
**Blocks:** 5 vs. Northeastern, 2/26/09  
**Steals:** 3, four times  
**Minutes:** 40 vs. Towson, 2/1/09

## Season Highs

**Points:** 2 vs. UMBC, 11/12/10  
**FG Made:** 1 vs. UMBC, 11/12/10  
**FG Attempted:** 2 vs. UMBC, 11/12/10  
**3-Pointers Made:** n/a  
**3-Pointers Attempted:** n/a  
**FT Made:** n/a  
**FT Attempted:** 3 vs. UMBC, 11/12/10  
**Rebounds:** 8 vs. UMBC, 11/12/10  
**Assists:** n/a  
**Blocks:** 1 vs. UMBC, 11/12/10  
**Steals:** 2 vs. UMBC, 11/12/10  
**Minutes:** 26 vs. UMBC, 11/12/10

# #22 LAUREN CARRA

Sophomore • Guard • 5-9 • Dunmore, Pa. • Dunmore

## As A Blue Hen

Will challenge for a starting role in the Delaware backcourt • primarily a shooting guard but should see extended action at point guard due to the loss of 2009-10 starter Kayla Miller, who underwent back surgery in November and is out indefinitely.

## 2009-10 Season:

Saw action in 31 of the Blue Hens' contests • started 14 games during freshman campaign • averaged 6.0 points per game throughout the season to rank third on the squad • pulled down 2.0 rebounds per game • dished out 36 assists and ranked third on the team having made 30 steals for the Hens • collected a block against Old Dominion in UD's CAA opener (1/3) • scored a season-high 15 points at Columbia (12/2) and added 14 on three occasions: Towson (1/28), UMBC (12/5) and Colorado State (11/28) • posted eight double-digit performances throughout the season • twice made a trio of three pointers • pulled down a season-high seven rebounds at Drexel (1/31) • served out five assists at Hofstra (1/24) • made a notable four steals in the Coors Rocky Mountain Invitational Championship game at Colorado State (11/28) • was named to Coors Rocky Mountain Invitational All-Tournament Team • saw 680 minutes of action including a season-high 41 minutes in the Hens' OT game at Drexel (1/31) • named Army ROTC Best of the Blue Hens Athlete of the Week on Nov. 30.



## High School

First team All-State Class AA selection as a senior after earning second team honors as a junior and third team honors as a sophomore • scored 2,117 points during her career • averaged 22 points per game as a senior • had jersey retired at Dunmore High School • led Dunmore to a 104-13 record during her four years, including a 55-game conference win streak • Division II Lackawanna League Player of the Year in 2007 and 2008 • three-time All-Region and All-Division First Team selection • led Dunmore to three consecutive District Championships • twice was the leading scorer in the district • also played center field on the softball team her senior year • named a Lackawanna League Division II First Team All-Star selection • honor roll student.

## Personal

Lauren Ann Carra • daughter of Joseph and Mary Beth Carra • has a brother, Anthony • Management Information Systems major • aspires to work in the information technology field or education • cites her high school coach, Ross Macciocco, and her father as the biggest influences on her playing career.

Career Highs	
<b>Points:</b> 15 at Columbia, 12/2/09	
<b>FG Made:</b> 5, twice	
<b>FG Attempted:</b> 13 at Drexel, 1/31/10	
<b>3-Pointers Made:</b> 3, twice	
<b>3-Pointers Attempted:</b> 8 at UMBC, 12/5/09	
<b>FT Made:</b> 5, twice	
<b>FT Attempted:</b> 7 at Columbia, 12/2/09	
<b>Rebounds:</b> 7 at Drexel, 1/31/10	
<b>Assists:</b> 5, twice, most recently vs. St. Francis, 11/23/10	
<b>Blocks:</b> 1, twice, most recently vs. St. Francis 11/23/10	
<b>Steals:</b> 4 at Colorado State, 11/28/09	
<b>Minutes:</b> 41 at Drexel, 1/31/10	
Season Highs	
<b>Points:</b> 9 vs. St. Francis, 11/23/10	
<b>FG Made:</b> 4 vs. St. Francis, 11/23/10	
<b>FG Attempted:</b> 10 vs. St. Francis, 11/23/10	
<b>3-Pointers Made:</b> 1, three times, most recently vs. St. Francis, 11/23/10	
<b>3-Pointers Attempted:</b> 4, twice, most recently vs. St. Francis, 11/23/10	
<b>FT Made:</b> 2 vs. UMBC, 11/12/10	
<b>FT Attempted:</b> 2 vs. UMBC, 11/12/10	
<b>Rebounds:</b> 6 vs. UMBC, 11/12/10	
<b>Assists:</b> 5 vs. Yale, 11/20/10	
<b>Blocks:</b> n/a	
<b>Steals:</b> 2 vs. St. Francis, 11/23/10	
<b>Minutes:</b> 35 vs. Villanova, 11/16/10	

Date	Opponent	FG-A	3FG-A	FT-A	O-D-R	PF	A	T	B	S	Pts.	Min.
11/12	UMBC	1-3	1-1	2-2	0-6-6	2	4	5	0	1	5	33
11/16	Villanova	3-7	1-4	0-1	0-2-2	4	3	4	0	0	7	35
11/20	at Yale	2-3	0-0	2-2	0-1-1	4	5	4	0	0	6	32
11/23	St. Francis (Pa.)	4-10	1-4	0-1	0-3-3	1	1	4	1	2	9	30
11/28	at La Salle											
12/1	Princeton											
12/5	at Navy											
12/19	at Penn State											
12/22	Saint Joseph's											
12/29	vs. Vanderbilt											
12/30	vs. TBA											
1/2	Hofstra											
1/6	at Northeastern											
1/9	at Drexel											
1/13	William & Mary											
1/16	Old Dominion											
1/20	at UNCW											
1/23	at Georgia State											
1/27	George Mason											
1/30	at Hofstra											
2/3	Northeastern											
2/6	Drexel											
2/10	at Towson											
2/13	at William & Mary											
2/17	at George Mason											
2/20	James Madison											
2/24	VCU											
2/27	at Old Dominion											
3/2	Towson											

Year	G/GS	FG-FGA	PCT	3-PT-FGA	PCT	FT-FTA	PCT	AST	STL	BLK	REB	RPG	PTS	PPG	Min.	Avg.
2009-10	31/14	58-175	.331	29-99	.293	40-60	.667	36	30	1	62	2.0	185	5.9	680	21.9
2010-11	4/4	10-23	.435	3-9	.333	4-6	.667	13	3	1	12	3.0	27	6.8	130	32.5
<b>Totals</b>	<b>35/18</b>	<b>68-198</b>	<b>.343</b>	<b>32-108</b>	<b>.296</b>	<b>44-66</b>	<b>.666</b>	<b>49</b>	<b>33</b>	<b>2</b>	<b>74</b>	<b>2.1</b>	<b>212</b>	<b>6.1</b>	<b>810</b>	<b>23.1</b>

# #45 CHELSEA CRAIG

Sophomore • Forward • 6-2 • Rockville, Md. • Wootton



## As A Blue Hen

Will challenge for playing time in the Delaware frontcourt as a second-year sophomore.

## 2009-10 Season

Did not appear in any games for the Blue Hens

## High School

First Team All-Montgomery County selection as a senior and earned second team honors as a junior • first team Montgomery County Senior All-Star Team pick • led Thomas S. Wootton High School to the regional semifinals during her final three years and to the regional quarterfinals as a freshman • Wootton went 73-22 during her four seasons • recorded 990 career rebounds (10.3 avg.) and 745 career points (7.8 avg.) • averaged 14.5 points and 8.9 rebounds as a senior • appeared in 2009 McDonald's Classic Roundball All-Star Game • earned Scholar Athlete Award all four years of high school • member of National Honor Society • earned Foreign Language Excellence Award in Spanish • earned Global Achievement Award for Science, Technology and Research Signature (STARS) program.

## Personal

Chelsea Ann Craig • daughter of David and Michele Craig • has a sister, Amanda, and a brother, Andrew • chemistry major at Delaware • aspires to become a physical therapist • worked as a nursery supervisor over the summer • enjoys music, reading, and hanging out with friends during her free time.

Date	Opponent	FG-A	3FG-A	FT-A	O-D-R	PF	A	T	B	S	Pts.	Min.
11/12	UMBC	--	--	--	--	--	--	--	--	--	--	--
11/16	Villanova	--	--	--	--	--	--	--	--	--	--	--
11/20	at Yale	--	--	--	--	--	--	--	--	--	--	--
11/23	St. Francis (Pa.)	--	--	--	--	--	--	--	--	--	--	--
11/28	at La Salle	--	--	--	--	--	--	--	--	--	--	--
12/1	Princeton	--	--	--	--	--	--	--	--	--	--	--
12/5	at Navy	--	--	--	--	--	--	--	--	--	--	--
12/19	at Penn State	--	--	--	--	--	--	--	--	--	--	--
12/22	Saint Joseph's	--	--	--	--	--	--	--	--	--	--	--
12/29	vs. Vanderbilt	--	--	--	--	--	--	--	--	--	--	--
12/30	vs. TBA	--	--	--	--	--	--	--	--	--	--	--
1/2	Hofstra	--	--	--	--	--	--	--	--	--	--	--
1/6	at Northeastern	--	--	--	--	--	--	--	--	--	--	--
1/9	at Drexel	--	--	--	--	--	--	--	--	--	--	--
1/13	William & Mary	--	--	--	--	--	--	--	--	--	--	--
1/16	Old Dominion	--	--	--	--	--	--	--	--	--	--	--
1/20	at UNCW	--	--	--	--	--	--	--	--	--	--	--
1/23	at Georgia State	--	--	--	--	--	--	--	--	--	--	--
1/27	George Mason	--	--	--	--	--	--	--	--	--	--	--
1/30	at Hofstra	--	--	--	--	--	--	--	--	--	--	--
2/3	Northeastern	--	--	--	--	--	--	--	--	--	--	--
2/6	Drexel	--	--	--	--	--	--	--	--	--	--	--
2/10	at Towson	--	--	--	--	--	--	--	--	--	--	--
2/13	at William & Mary	--	--	--	--	--	--	--	--	--	--	--
2/17	at George Mason	--	--	--	--	--	--	--	--	--	--	--
2/20	James Madison	--	--	--	--	--	--	--	--	--	--	--
2/24	VCU	--	--	--	--	--	--	--	--	--	--	--
2/27	at Old Dominion	--	--	--	--	--	--	--	--	--	--	--
3/2	Towson	--	--	--	--	--	--	--	--	--	--	--

### Career Highs

Points: n/a  
 FG Made: n/a  
 FG Attempted: n/a  
 3-Pointers Made: n/a  
 3-Pointers Attempted: n/a  
 FT Made: n/a  
 FT Attempted: n/a  
 Rebounds: n/a  
 Assists: n/a  
 Blocks: n/a  
 Steals: n/a  
 Minutes: n/a

### Season Highs

Points: n/a  
 FG Made: n/a  
 FG Attempted: n/a  
 3-Pointers Made: n/a  
 3-Pointers Attempted: n/a  
 FT Made: n/a  
 FT Attempted: n/a  
 Rebounds: n/a  
 Assists: n/a  
 Blocks: n/a  
 Steals: n/a  
 Minutes: n/a

Year	G/GS	FG-FGA	PCT	3-PT-FGA	PCT	FT-FTA	PCT	AST	STL	BLK	REB	RPG	PTS	PPG	Min.	Avg.
2010-11	---	---	---	---	---	---	---	---	---	---	---	---	---	---	---	---
<b>Totals</b>	---	---	---	---	---	---	---	---	---	---	---	---	---	---	---	---

# #51 SARAH ACKER

Junior • Center • 6-3 • Nanticoke, Pa. • Greater Nanticoke (Saint Joseph's)

## As A Blue Hen

Will challenge for a starting position in the Delaware frontcourt after being granted a waiver from the NCAA.

## 2008-09 at Saint Joseph's

Played in one game with the Hawks before sitting out remainder of season for personal reasons.

## 2007-08 at Saint Joseph's

Led team to a 17-14 overall record • started in 30 games while playing in 31 as a freshman • led team in rebounds 24 times • first freshman to lead team in scoring (11.9), rebound (8.7) and blocks (46 • first Saint Joseph's freshman to be named first-team All-Big 5 • named Big-5 Rookie of the Year • earned third-team Atlantic Ten and All-Rookie Team honors • set freshman record in rebounds (271), also ranking her eighth-most in a single season • 46 blocks rank fourth in a single season • led A-10 in field goal percentage (59.6), third in rebound and fifth in blocks • named team's Best Offensive Player and earned Hilton Philadelphia Hawk Classic All-Tournament Team accolades.

## High School

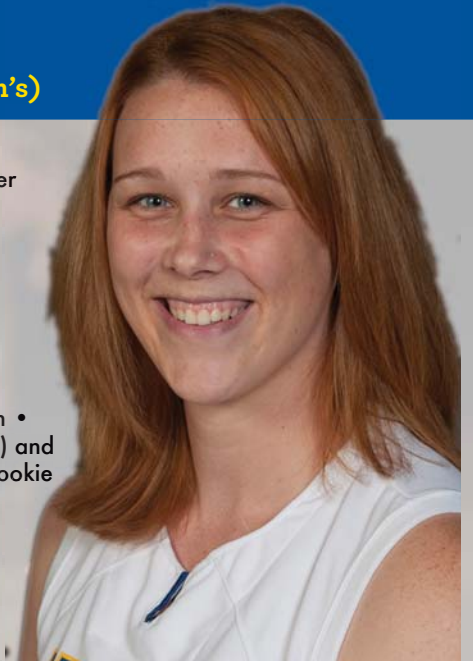
Led Greater Nanticoke to a 58-2 record her final two seasons, twice winning the Wyoming Valley Conference and AAA District II Championships • as a senior, averaged 22 points, 18 rebounds and 10 blocks per game, earning Second Team All-Pennsylvania Interscholastic Athletic Association accolades • named both the 2006-07 Citizens' Voice and Times Ledger Player of the Year • three-time Wyoming Valley Conference MVP and Wyoming Valley Conference First Team All-Scholastic honoree • 2006-07 Gatorade Player of the Year nominee and All-American Honorable Mention by Street & Smith's • finished her high school career with over 1,500 points, 1,500 rebounds and 500 blocks • also earned All-PIAA honors after leading Greater Nanticoke to the Girls AA District II Volleyball Championship • lettered in track and field.

## Personal

Sarah Samantha Acker • daughter of Terry and Lorraine Acker • has an older sister and a younger brother • began playing basketball in third grade • sociology degree at Delaware with aspirations to be a veterinary technician.

Date	Opponent	FG-A	3FG-A	FT-A	O-D-R	PF	A	T	B	S	Pts.	Min.
11/12	UMBC	—	—	—	—	—	—	—	—	—	—	—
11/16	Villanova	—	—	—	—	—	—	—	—	—	—	—
11/20	at Yale	2-4	0-0	0-1	4-5-9	1	0	3	2	4	4	27
11/23	St. Francis (Pa.)	4-8	0-0	5-6	4-8-12	0	0	1	2	0	13	28
11/28	at La Salle											
12/1	Princeton											
12/5	at Navy											
12/19	at Penn State											
12/22	Saint Joseph's											
12/29	vs. Vanderbilt											
12/30	vs. TBA											
1/2	Hofstra											
1/6	at Northeastern											
1/9	at Drexel											
1/13	William & Mary											
1/16	Old Dominion											
1/20	at UNCW											
1/23	at Georgia State											
1/27	George Mason											
1/30	at Hofstra											
2/3	Northeastern											
2/6	Drexel											
2/10	at Towson											
2/13	at William & Mary											
2/17	at George Mason											
2/20	James Madison											
2/24	VCU											
2/27	at Old Dominion											
3/2	Towson											

Year	G/GS	FG-FGA	PCT	3-PT-FGA	PCT	FT-FTA	PCT	AST	STL	BLK	REB	RPG	PTS	PPG	Min.	Avg.
2010-11	2/0	6-12	.500	0-0	.000	5-7	.714	0	4	4	21	10.5	17	8.5	55	27.5
<b>Totals</b>	<b>2/0</b>	<b>6-12</b>	<b>.500</b>	<b>0-0</b>	<b>.000</b>	<b>5-7</b>	<b>.714</b>	<b>0</b>	<b>4</b>	<b>4</b>	<b>21</b>	<b>10.5</b>	<b>17</b>	<b>8.5</b>	<b>55</b>	<b>27.5</b>



Career Highs
Points: 13 vs. St. Francis, 11/23/10
FG Made: 4 vs. St. Francis, 11/23/10
FG Attempted: 8 vs. St. Francis, 11/23/10
3-Pointers Made: n/a
3-Pointers Attempted: n/a
FT Made: 5 vs. St. Francis, 11/23/10
FT Attempted: 6 vs. St. Francis, 11/23/10
Rebounds: 12 vs. St. Francis, 11/23/10
Assists: n/a
Blocks: 2, twice, most recently vs. St. Francis, 11/23/10
Steals: 4 vs. Yale, 11/20/10
Minutes: 28 vs. St. Francis, 11/23/10
Double-Doubles: 1 vs. St. Francis, 11/23/10
Season Highs
Points: 13 vs. St. Francis, 11/23/10
FG Made: 4 vs. St. Francis, 11/23/10
FG Attempted: 8 vs. St. Francis, 11/23/10
3-Pointers Made: n/a
3-Pointers Attempted: n/a
FT Made: 5 vs. St. Francis, 11/23/10
FT Attempted: 6 vs. St. Francis, 11/23/10
Rebounds: 12 vs. St. Francis, 11/23/10
Assists: n/a
Blocks: 2, twice, most recently vs. St. Francis, 11/23/10
Steals: 4 vs. Yale, 11/20/10
Minutes: 28 vs. St. Francis, 11/23/10
Double-Doubles: 1 vs. St. Francis, 11/23/10

# #55 JASMINE GIBSON

Junior • Center • 6-3 • New Castle, Del. • Sanford

## As A Blue Hen

Third-year team member expected to see significant playing time in the Blue Hen frontcourt

## 2009-10 Season

Saw action in 16 of the Blue Hens' contests • started a pair of games • averaged 2.6 points per game and 2.4 rebounds per contest • recorded nine blocks, four steals and one assist throughout the season • had a stand-out performance at William & Mary (2/21) • scored a season-high 12 points and pulled down a game- and season-high 14 boards for her first career double-double • scored 12 points on 5-for-8 shooting at W&M • collected a pair of steals at Columbia (12/2) • twice made two blocks • saw a season-high 24 minutes of action at Towson (2/28) and 22 minutes at Columbia • recorded 155 minutes of game action throughout the

## 2008-09 Season

Appeared in 22 games during her freshman season • averaged 2.0 points and 1.2 rebounds in 8.4 minutes per game • scored a season-high six points against Loyola Marymount (12/29) and Northeastern (1/29) • added five points versus VCU (1/18) and Northeastern (2/26) • grabbed a season-high four rebounds against Hofstra (2/5) as she played a season-high 16 minutes • pulled down three boards at Loyola Marymount (12/29) • blocked a season-high three shots against Stony Brook (12/28).

## High School

Standout basketball player at Christiana High School and Sanford School • earned four varsity letters in basketball and three in volleyball • First Team All-Conference selection from 2006-2008 • earned First Team All-State honors in 2008 • McDonald's All-American nominee • led team to AAU Division II National Championship in 2007.

## Personal

Jasmine Nichole "Jazz" Gibson • born in Philadelphia, Pa. • daughter of Denard Montgomery and Nichole Gibson • father played basketball at the University of Delaware from 1988-1992 • cites father as greatest influence on basketball career and has pre-game conversations with him • has a step-brother, Cameren Johnson • undeclared major at Delaware • worked as a counselor at the Newark Boys and Girls Club during the summer • enjoys reading and writing poetry in her spare time.



### Career Highs

**Points:** 12 at W&M, 2/21/10  
**FG Made:** 5 at W&M, 2/21/10  
**FG Attempted:** 8 at W&M, 2/21/10  
**3-Pointers Made:** n/a  
**3-Pointers Attempted:** n/a  
**FT Made:** 3 vs. Northeastern, 2/26/09  
**FT Attempted:** 7 at Hofstra, 2/5/09  
**Rebounds:** 14 at W&M, 2/21/10  
**Assists:** 1 at Colorado State, 11/28/09  
**Blocks:** 2, five times  
**Steals:** 2 at Columbia, 12/2/09  
**Minutes:** 22 at Columbia, 12/2/09  
**Double-Doubles:** 1 vs. William & Mary, 2/21/10

### Season Highs

**Points:** n/a  
**FG Made:** n/a  
**FG Attempted:** n/a  
**3-Pointers Made:** n/a  
**3-Pointers Attempted:** n/a  
**FT Made:** n/a  
**FT Attempted:** n/a  
**Rebounds:** n/a  
**Assists:** n/a  
**Blocks:** n/a  
**Steals:** n/a  
**Minutes:** n/a

Date	Opponent	FG-A	3FG-A	FT-A	O-D-R	PF	A	T	B	S	Pts.	Min.
11/12	UMBC	-	-	-	-	-	-	-	-	-	-	-
11/16	Villanova	-	-	-	-	-	-	-	-	-	-	-
11/20	at Yale	-	-	-	-	-	-	-	-	-	-	-
11/23	St. Francis (Pa.)	-	-	-	-	-	-	-	-	-	-	-
11/28	at La Salle	-	-	-	-	-	-	-	-	-	-	-
12/1	Princeton	-	-	-	-	-	-	-	-	-	-	-
12/5	at Navy	-	-	-	-	-	-	-	-	-	-	-
12/19	at Penn State	-	-	-	-	-	-	-	-	-	-	-
12/22	Saint Joseph's	-	-	-	-	-	-	-	-	-	-	-
12/29	vs. Vanderbilt	-	-	-	-	-	-	-	-	-	-	-
12/30	vs. TBA	-	-	-	-	-	-	-	-	-	-	-
1/2	Hofstra	-	-	-	-	-	-	-	-	-	-	-
1/6	at Northeastern	-	-	-	-	-	-	-	-	-	-	-
1/9	at Drexel	-	-	-	-	-	-	-	-	-	-	-
1/13	William & Mary	-	-	-	-	-	-	-	-	-	-	-
1/16	Old Dominion	-	-	-	-	-	-	-	-	-	-	-
1/20	at UNCW	-	-	-	-	-	-	-	-	-	-	-
1/23	at Georgia State	-	-	-	-	-	-	-	-	-	-	-
1/27	George Mason	-	-	-	-	-	-	-	-	-	-	-
1/30	at Hofstra	-	-	-	-	-	-	-	-	-	-	-
2/3	Northeastern	-	-	-	-	-	-	-	-	-	-	-
2/6	Drexel	-	-	-	-	-	-	-	-	-	-	-
2/10	at Towson	-	-	-	-	-	-	-	-	-	-	-
2/13	at William & Mary	-	-	-	-	-	-	-	-	-	-	-
2/17	at George Mason	-	-	-	-	-	-	-	-	-	-	-
2/20	James Madison	-	-	-	-	-	-	-	-	-	-	-
2/24	VCU	-	-	-	-	-	-	-	-	-	-	-
2/27	at Old Dominion	-	-	-	-	-	-	-	-	-	-	-
3/2	Towson	-	-	-	-	-	-	-	-	-	-	-

Year	G/GS	FG-FGA	PCT	3-PT-FGA	PCT	FT-FTA	PCT	AST	STL	BLK	REB	RPG	PTS	PPG	Min.	Avg.
2008-09	22/0	16-33	.485	0-0	.000	12-25	.480	0	2	12	26	1.2	44	2.0	185	8.4
2009-10	16/2	19-37	.514	0-0	.000	3-12	.250	1	2	9	39	2.4	41	2.6	155	9.7
<b>Totals</b>	<b>38/2</b>	<b>35-70</b>	<b>.500</b>	<b>0-0</b>	<b>.000</b>	<b>15-37</b>	<b>.405</b>	<b>1</b>	<b>4</b>	<b>21</b>	<b>65</b>	<b>1.7</b>	<b>85</b>	<b>2.2</b>	<b>340</b>	<b>8.9</b>

# #15 AKEEMA RICHARDS

Soph. (R) • Guard • 5-7 • Baltimore, Md. • Western (West Virginia)

## As A Blue Hen

Ineligible for 2010-11 season due to NCAA transfer rules.

## 2009-10 Season at West Virginia

Played in 31 games, making one start • averaged 2.1 points per game • hit .403 percent (29-72) of her field goals • pulled down 26 defensive rebounds while recording 27 steals • played in 9.9 minutes per contest • team went 29-6 overall and 13-3 in the Big East • scored two points and had one rebound in first round of NCAA Tournament • team reached second round of the NCAA Tournament • qualified for Dean's List at WVU.

## High School

Played all four years at Western High School in Baltimore • team won city and regional championships four consecutive years • reached semifinals on two occasions • member of the National Honor Society.

## Personal

Akeema S. Richards • daughter of Anderson and Debra Richards • has four siblings • will see former teammates Sheree Ledbetter (Towson) and Tyler Hale (Drexel) • civil engineering major at Delaware.



# #21 TRUMAE LUCAS

Junior (R) • Guard • 5-8 • Greensboro, N.C. • Grimsley (Florida)

## As A Blue Hen

Ineligible for 2010-11 season due to NCAA transfer rules.

## 2009-10 at Florida

Played in 30 games, including all 16 conference games, starting the first three games of the year • averaged 5.3 points per game in conference and non-conference games • grabbed 1.9 rebounds per game • averaged 16.4 minutes per game • scored a career-best 15 points in a win over Jacksonville • leading guard scorer off the bench • paced team in scoring on three occasions • shot .362 percent from the floor (64-177) • recorded 21 steals and 53 assists • sank 11 consecutive free throws • earned All-Southeastern Conference Academic Honor status • team went 39-25 during her two years at Florida.

## 2008-09 at Florida

Saw time in 31 games with five starts • averaged 4.1 points per game • tallied 23 steals and 31 assists • knocked down .455 percent (10-22) of her three pointers • snagged 40 total rebounds • scored points in 21 games, including eight points in the team's first-round NCAA tournament 70-57 win over Temple • averaged 15.2 minutes a contest • named to SEC Freshman Academic Honor Roll.

## High School

Played for four seasons at Grimsley High School in Greensboro, N.C. • earned four letters • named to All-Conference team • team won conference and tournament championships • named to All-Area team • named Most Outstanding Player of 2007 North Carolina 4-A State Championship game • scored 33 points in title game • led team to 29-1 record in senior year while averaging team-best 16.2 points per game • played in North Carolina versus South Carolina game, scoring 12 points • also competed in track, qualifying for regional's in the 4x200m relay and the 200m dash • earned honor roll status.

## Personal

Trumae "Mae" C. Lucas • daughter of Trudah Lucas • has two siblings, one older and one younger • began playing basketball when she was five years old • lists mother as biggest influence for keeping her around basketball her entire life • communications major at the University with ambitions of being a sports reporter.



2010-11 Delaware Women's Basketball  
Delaware Combined Team Statistics (as of Nov 23, 2010)  
All games

RECORD:	OVERALL	HOME	AWAY	NEUTRAL
ALL GAMES	4-0	3-0	1-0	0-0
CONFERENCE	0-0	0-0	0-0	0-0
NON-CONFERENCE	4-0	3-0	1-0	0-0

##	Player	gp-gs	min	avg	Total		3-Point		F-Throw		Rebounds			pf	dq	a	to	blk	stl	pts	avg	
					fg-fga	fg%	3fg-fga	3fg%	ft-fga	ft%	off	def	tot									avg
11	Delle Donne, Elena	4-4	155	38.8	48-95	.505	11-18	.611	30-32	.938	9	27	36	9.0	2	0	9	13	8	2	137	34.2
51	Acker, Sarah	2-0	55	27.5	6-12	.500	0-0	.000	5-7	.714	8	13	21	10.5	1	0	0	4	4	4	17	8.5
12	Parker, Danielle	4-3	119	29.8	11-26	.423	0-0	.000	11-14	.786	9	28	37	9.3	5	0	0	3	1	3	33	8.3
22	Carra, Lauren	4-4	130	32.5	10-23	.435	3-9	.333	4-6	.667	0	12	12	3.0	11	0	13	17	1	3	27	6.8
02	Bailey, Jocelyn	4-4	101	25.3	8-19	.421	0-0	.000	5-6	.833	11	13	24	6.0	15	0	0	8	2	1	21	5.3
03	May, Jaquetta	4-0	75	18.8	7-16	.438	0-0	.000	7-11	.636	7	13	20	5.0	6	0	6	7	4	7	21	5.3
05	Kabongo, Vanessa	4-4	85	21.3	3-15	.200	1-2	.500	6-8	.750	3	4	7	1.8	8	0	3	8	0	2	13	3.3
13	Buchanan, Kelsey	3-0	16	5.3	1-2	.500	0-0	.000	0-0	.000	1	4	5	1.7	3	0	0	3	1	0	2	0.7
20	Riddick, Eva	3-1	29	9.7	1-3	.333	0-0	.000	0-3	.000	5	5	10	3.3	1	0	0	4	1	2	2	0.7
04	McLean, Meghan	4-0	35	8.8	0-6	.000	0-5	.000	2-2	1.000	0	7	7	1.8	5	0	1	3	0	0	2	0.5
Team											1	2	3				1					
Total.....		4	800		95-217	.438	15-34	.441	70-89	.787	54	128	182	45.5	57	0	32	71	22	24	275	68.8
Opponents.....		4	802		77-231	.333	33-96	.344	32-42	.762	33	79	112	28.0	75	-	44	62	5	28	219	54.8

TEAM STATISTICS	DELAWARE	OPP	Date	Opponent	Score	Att.
SCORING	275	219	11/12/10	UMBC	w 59-44	2079
Points per game	68.8	54.8	11/16/10	VILLANOVA	w 69-62	2125
Scoring margin	+14.0	-	11/20/10	at Yale	w 79-61	524
FIELD GOALS-ATT	95-217	77-231	11/23/10	SAINT FRANCIS	w 68-52	1952
Field goal pct	.438	.333	* - Conference game			
3 POINT FG-ATT	15-34	33-96				
3-point FG pct	.441	.344				
3-pt FG made per game	3.8	8.3				
FREE THROWS-ATT	70-89	32-42				
Free throw pct	.787	.762				
F-Throws made per game	17.5	8.0				
REBOUNDS	182	112				
Rebounds per game	45.5	28.0				
Rebounding margin	+17.5	-				
ASSISTS	32	44				
Assists per game	8.0	11.0				
TURNOVERS	71	62				
Turnovers per game	17.8	15.5				
Turnover margin	-2.2	-				
Assist/turnover ratio	0.5	0.7				
STEALS	24	28				
Steals per game	6.0	7.0				
BLOCKS	22	5				
Blocks per game	5.5	1.3				
ATTENDANCE	6156	524				
Home games-Avg/Game	3-2052	1-524				
Neutral site-Avg/Game	-	0-0				

Score by Periods	1st	2nd	Totals
Delaware	142	133	275
Opponents	103	116	219